

Running Queries

There are several steps to run a query:

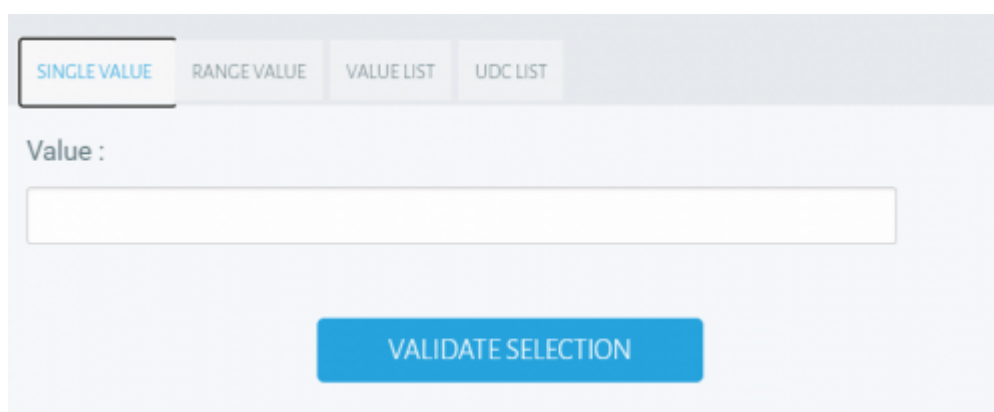
- Data selection.
- Format selection.
- Running and processing the result.

Data selection

After selecting the desired query, the user selects the data by clicking on the drop-down list. The selection can be made in several ways depending on the query to be launched (Single Value-Range Value-Value List-UDC List).

Single Value

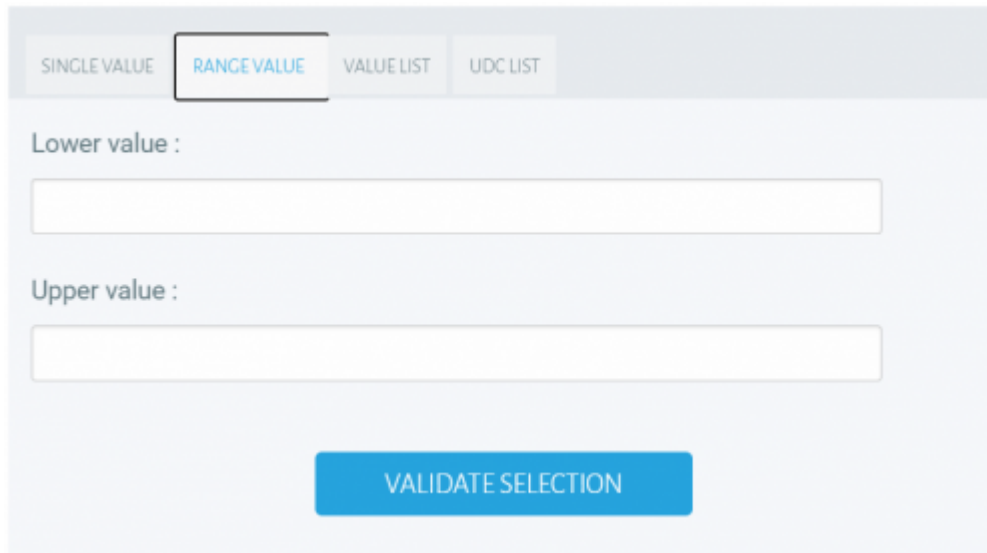
Single value returns the result corresponding to the **single value** search.



The screenshot shows a user interface for data selection. At the top, there are four tabs: 'SINGLE VALUE' (highlighted in blue), 'RANGE VALUE', 'VALUE LIST', and 'UDC LIST'. Below the tabs, the text 'Value :' is followed by a large, empty text input field. At the bottom center, there is a blue button labeled 'VALIDATE SELECTION'.

Range Value

Range value allows you to select a defined data range between the lowest and highest value (Lower value / Upper value).



SINGLE VALUE **RANGE VALUE** VALUE LIST UDC LIST

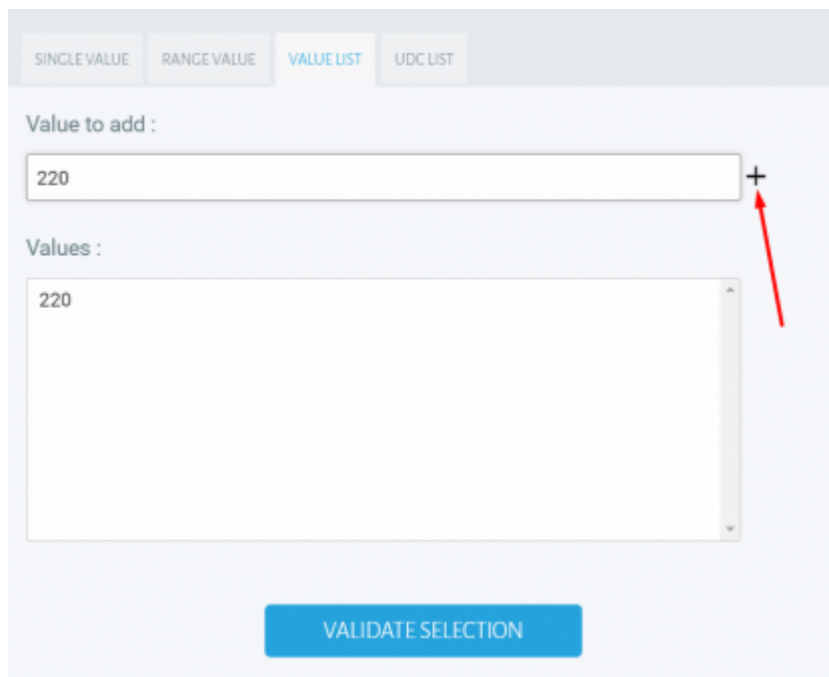
Lower value :

Upper value :

VALIDATE SELECTION

Value List

Value list allows the user to create his list of values, to do this simply enter the value to be added in the “Value to add” field and click on the + on the right of the field.

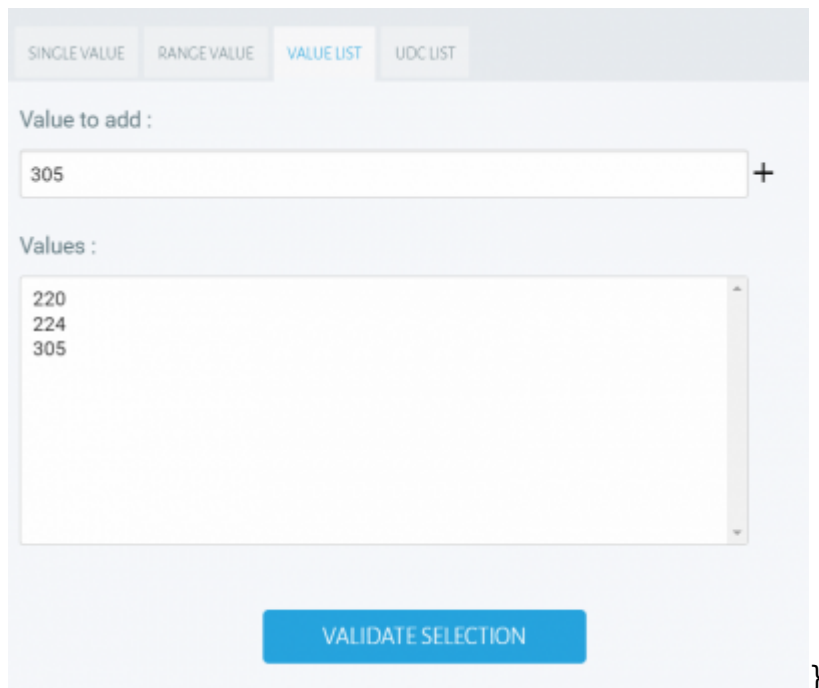


SINGLE VALUE RANGE VALUE **VALUE LIST** UDC LIST

Value to add :
 +

Values :

VALIDATE SELECTION



The screenshot shows a user interface for running queries. At the top, there are four tabs: 'SINGLE VALUE', 'RANGE VALUE', 'VALUE LIST' (which is selected and highlighted in blue), and 'UDC LIST'. Below the tabs, there is a section labeled 'Value to add :'. It contains a text input field with the value '305' and a '+' button to its right. Below this is a section labeled 'Values :'. It contains a list box with three items: '220', '224', and '305'. At the bottom of the interface is a blue button labeled 'VALIDATE SELECTION'. A closing curly brace '}' is visible on the right side of the interface.

UDC List

UDC list displays the list of values available for the query. The user can select one or more values according to his needs. It is also possible to search for a specific value using the search bar. The search is flexible, it is not case sensitive.



The UDC List is only available for JDE databases and on Item, Customer, Cost Center, Company, and fields controlled by a UDC table.

Code Article ?

SINGLE VALUERANGE VALUEVALUE LISTUDC LIST

VALIDATE SELECTION

Search value

Select	Key	Label
<input type="checkbox"/>	#2 PENCIL	#2 Pencil
<input type="checkbox"/>	1 LT SALINE	1 LT Saline1
<input type="checkbox"/>	1001	Bike Rack - Trunk Mount
<input type="checkbox"/>	100101	Bike Rack - Trunk Mount
<input type="checkbox"/>	100102	Bike Rack - Trunk Mount
<input type="checkbox"/>	100103	Bike Rack - Trunk Mount
<input type="checkbox"/>	100104	Bike Rack - Trunk Mount

Code Article ?

SINGLE VALUERANGE VALUE LISTUDC LIST

VALIDATE SELECTION

bike

Select	Key	Label
<input type="checkbox"/>	1001	Bike Rack - Trunk Mount
<input type="checkbox"/>	100101	Bike Rack - Trunk Mount
<input type="checkbox"/>	100102	Bike Rack - Trunk Mount
<input type="checkbox"/>	100103	Bike Rack - Trunk Mount
<input type="checkbox"/>	100104	Bike Rack - Trunk Mount
<input type="checkbox"/>	100105	Bike Rack - Trunk Mount

Format selection

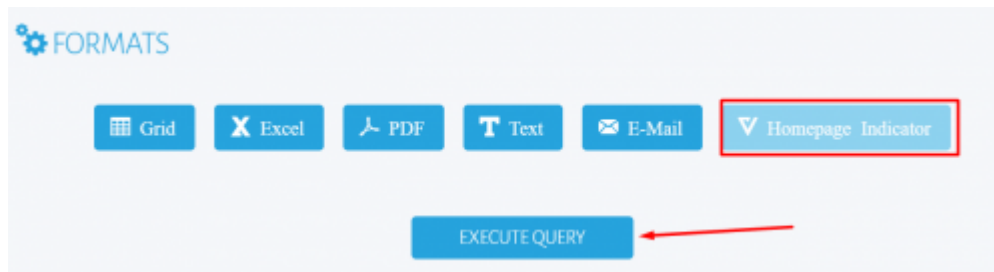
The user can select the output format for his query.

List of formats:

- Grid
- Excel

- PDF
- Text
- E-Mail
- Homepage Indicator

The **Homepage Indicator** format allows you to create an indicator with the result of the query. Its creation is simple, just select Homepage Indicator as the format and execute the query.



The user will fill in the tab HEADER, the title, description, level of visibility, and the refresh time. The parameters of the tab CONTENT will be displayed according to the type of result desired.

A screenshot of a form for creating an indicator. The form has two tabs: 'HEADER' and 'CONTENT'. The 'HEADER' tab is active. It contains fields for 'Title', 'Description', 'Visibility' (a dropdown menu currently showing 'Creator only'), and 'Refresh delay' (a text input with '0' and a 'minutes' label). A blue 'CREATE INDICATOR' button is at the bottom. Below this, the 'CONTENT' tab is shown, featuring a dropdown menu with options: 'Result table', 'Single value', 'Gauge chart', 'Line chart', 'Bar chart', and 'Pie chart'. The 'Result table' option is selected and highlighted in blue. Another 'CREATE INDICATOR' button is at the bottom of the 'CONTENT' section.

Running and processing the result

The query is launched by clicking on Execute query. Unlike other formats, **Grid** allows you to choose filters and perform actions on the result.

In **Grid** Format, the display of the name and description of the columns can be modified.

RESULT FOR QUERY : INVENTORY LEDGER M M-1 FINAL

Actions

GRID HEADER FORMAT:

☒ Name ☐ Description ☐ Invert display of name and description

	YEAR	BUSINESS UNIT	BUSINESS UNIT - IDESCR	G/L	G/L - IDESCR	MONTH	AMOUNT M	AMOUNT M-1	Qty M	Qty M-1	VARIANCE M M-1	COUNT	DESCRIPTION
1	2017	20	Northern Distribution Center	IN30	Manufactured Finished Goods	6	261 814	596	10 120	64	260 718		
1	2017	20	Northern Distribution Center	IN30	Manufactured Finished Goods	4	7 710	2 758	820	240	4 952		
1	2017	20	Northern Distribution Center	IN30	Manufactured Finished Goods	5	596	7 710	64	820	-7 114		
1	2017	20	Northern Distribution Center	IN30	Manufactured Finished Goods	2	2 295	2 684	220	280	-389		
1	2017	20	Northern Distribution Center	IN30	Manufactured Finished Goods	3	2 758	2 295	240	220	463		
	2017	20	Northern Distribution Center									5	20

Also, the Actions section above the grid is the access point for additional changes.

- **Quick filtering:** allows a non-case sensitive search and search on all the columns returned.
- **Filter:** Allows filtering by Field/Operator/Value.
- **Only display level breaks**
- **Automatic line break:** Automatic column width adjustment.
- **Dynamic charts:** see below.
- **Export:** Exports data in formats (excel, text, or homepage indicator).

RESULT FOR QUERY : INVENTORY LEDGER M M-1 FINAL

Actions

GRID HEADER FORMAT:

☒ Name ☐ Description ☐ Invert display of name and description

	YEAR	BUSINESS UNIT	BUSINESS UNIT - IDESCR	G/L	G/L - IDESCR	MONTH	AMOUNT M	AMOUNT M-1	Qty M	Qty M-1	VARIANCE M M-1	COUNT	DESCRIPTION
1	2017	20	Northern Distribution Center	IN30	Manufactured Finished Goods	6	261 814	596	10 120	64	260 718		
1	2017	20	Northern Distribution Center	IN30	Manufactured Finished Goods	4	7 710	2 758	820	240	4 952		
1	2017	20	Northern Distribution Center	IN30	Manufactured Finished Goods	5	596	7 710	64	820	-7 114		
1	2017	20	Northern Distribution Center	IN30	Manufactured Finished Goods	2	2 295	2 684	220	280	-389		
1	2017	20	Northern Distribution Center	IN30	Manufactured Finished Goods	3	2 758	2 295	240	220	463		
	2017	20	Northern Distribution Center									5	20
1	2017	30	Eastern Distribution Center	IN30	Manufactured Finished Goods	6	-1 135	-1 353 007	-18	-5 627	1 353 872		
1	2017	30	Eastern Distribution Center	IN30	Manufactured Finished Goods	4	2 289 583	431 183	1 766	2 055	1 849 330		
1	2017	30	Eastern Distribution Center	IN30	Manufactured Finished Goods	5	138 541	2 289 583	4 935	1 746	-2 143 962		
1	2017	30	Eastern Distribution Center	IN30	Manufactured Finished Goods	6	55 771 258	138 541	334 743	4 935	55 632 717		
1	2017	30	Eastern Distribution Center	IN30	Manufactured Finished Goods	2	138 484	7 484 728	605	153 918	-7 376 332		
1	2017	30	Eastern Distribution Center	IN30	Manufactured Finished Goods	3	431 183	116 416	2 055	605	312 778		
1	2017	30	Eastern Distribution Center	IN30	Manufactured Finished Goods	7	-3 383 887	55 771 258	-8 627	334 743	-57 124 265		
	2017	30	Eastern Distribution Center									7	30

RESULT FOR QUERY : INVENTORY LEDGER M M-1 FINAL

QUICK FILTER

Apply a filter on all columns

OK

Filters

Only display levelsbreaks

Automatic line breaks

Dynamic charts

Export

Execution settings

GRID HEADER FORMAT :

☒ Name

☐ Description

☐ Invert display of name and description

YEAR	BUSINESS UNIT	BUSINESS UNIT - JDESCR1	G/L	G/L - JDESCR1	MONTH	AMOUNT M	AMOUNT M-1	QTY M	QTY M-1	VARIANCE M M-1	COUNT	DESCRIPTION
2017	20	Northern Distribution Center	DN30	Manufactured Finished Goods	6	201 914	596	10 120	64	200 718		
2017	20	Northern Distribution Center	DN30	Manufactured Finished Goods	4	7 700	2 730	820	240	4 932		
2017	20	Northern Distribution Center	DN30	Manufactured Finished Goods	5	896	7 730	64	820	-7 114		
2017	20	Northern Distribution Center	DN30	Manufactured Finished Goods	2	2 200	2 684	220	280	-389		
2017	20	Northern Distribution Center	DN30	Manufactured Finished Goods	3	2 150	2 290	240	220	463		
2017	20	Northern Distribution Center									5	20

Dynamic charts

Among these modifications, it is possible to generate a dynamic chart.

RESULT FOR QUERY : INVENTORY LEDGER M M-1 FINAL

QUICK FILTER

Apply a filter on all columns

OK

Filters

Only display levelsbreaks

Automatic line breaks

Dynamic charts

Export

Execution settings

PIVOT TABLE FOR QUERY : /DEMO/MOUVEMENT DE STOCK M M-1 FINAL

SAVE AS NEW FORMAT

OVERWRITE SELECTED FORMAT

DELETE SELECTED FORMAT

Table

Count

Table: 21

Year

Business Unit

Business Unit - JDESCR1

G/L

G/L - JDESCR1

Month

Amount M

Amount M-1

Qty M

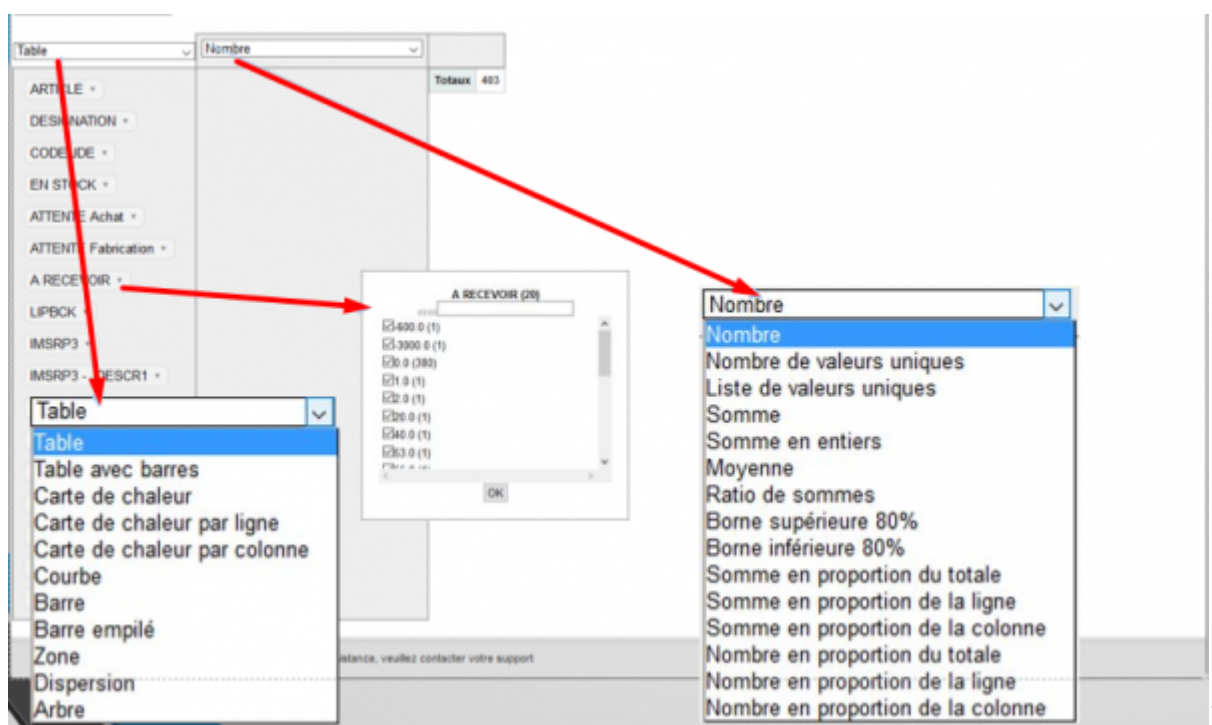
Qty M-1

Options in the table:

- Free selection of columns.
- Choice of the type of calculation.
- Choice of the type of restitution.

Vigilens Reporting Knowledge Garden - <https://vigilens.wiki/dokuwiki/>

- Possibility to filter the desired values by fields.



Calculation Type:

- Count: Counts the number of lines in a group.
- Count unique value: Counts the number of rows with different values for the specified field in a group.
- List unique Value: Displays the list of values for the specified field in the group without duplicates.
- Sum: Sum the values of the specified field for all rows in the group.
- Integer sum: Same as above, but displays a value rounded to an integer.
- Average: Averages the values of the specified field for each group.
- Minimum: Displays the minimum value of the specified field for each group.
- Maximum: Displays for each group the maximum value of the specified field.
- Sum over sum: For each group calculates the sum of each specified field, then performs the following ratio: "fields_1" / "fields_2".
- 80% Upper/Lower bound: Displays the maximum or minimum value of the 80% confidence interval.
- Sum as a fraction of Total: For each group makes the sum of the specified field values, then determines the percentage of this value compared to the table total, row total, or column total.
- Number in fraction of Row: For each group counts the number of rows, then determines the percentage of this value in relation to the total number of rows in the table, row, or column.

Return

Table

- Standard return.

- Choice of fields to compose the table freely.

Table

Moyenne

SDAEXP

Expr6 : GetYear(SHTRDJ (F4201))

	Expr6 : GetYear(SHTRDJ (F4201))	1997	1998	1999	2000	2002	2003	2004	2005	2006	2007	Totaux
SDSRP1 - JDESCR1		833,33	2,80	3 009,54	10 000,00		-5,64	450 000,00	5 458,67			5 983,88
Catalogue section accessoires						23,27		11 002,12	15 000,00			11 736,14
Catalogue section vélos		12 658,00	1 280,40		3 159,99	12 555,67		191 119,54	952 955,79	30 225,00		127 278,29
Totaux		5 560,00	2,80	2 813,06	10 000,00	2 945,75	8 187,38	460 000,00	51 621,29	483 934,36	30 225,00	43 784,55

Table barchart

- Fills the background of the cell with a bar representing the contribution of this value in the row total.
- Choice of fields to compose the table freely.

Table avec barres

Moyenne

SDAEXP

Expr6 : GetYear(SHTRDJ (F4201))

	Expr6 : GetYear(SHTRDJ (F4201))	1997	1998	1999	2000	2002	2003	2004	2005	2006	2007	Totaux
SDSRP1 - JDESCR1		833,33	2,80	3 009,54	10 000,00		-5,64	450 000,00	5 458,67			5 983,88
Catalogue section accessoires						23,27		11 002,12	15 000,00			11 736,14
Catalogue section vélos		12 658,00	1 280,40		3 159,99	12 555,67		191 119,54	952 955,79	30 225,00		127 278,29
Totaux		5 560,00	2,80	2 813,06	10 000,00	2 945,75	8 187,38	460 000,00	51 621,29	483 934,36	30 225,00	43 784,55

Heatmap

- Fills the background of the cell with a more or less strong shade of red depending on the contribution of the value in the total.
- The total taken into account may be the total of the table, the row or the column.
- Choice of fields to compose the table freely.

Carte de chaleur

Moyenne

SDAEXP

Expr6 : GetYear(SHTRDJ (F4201))

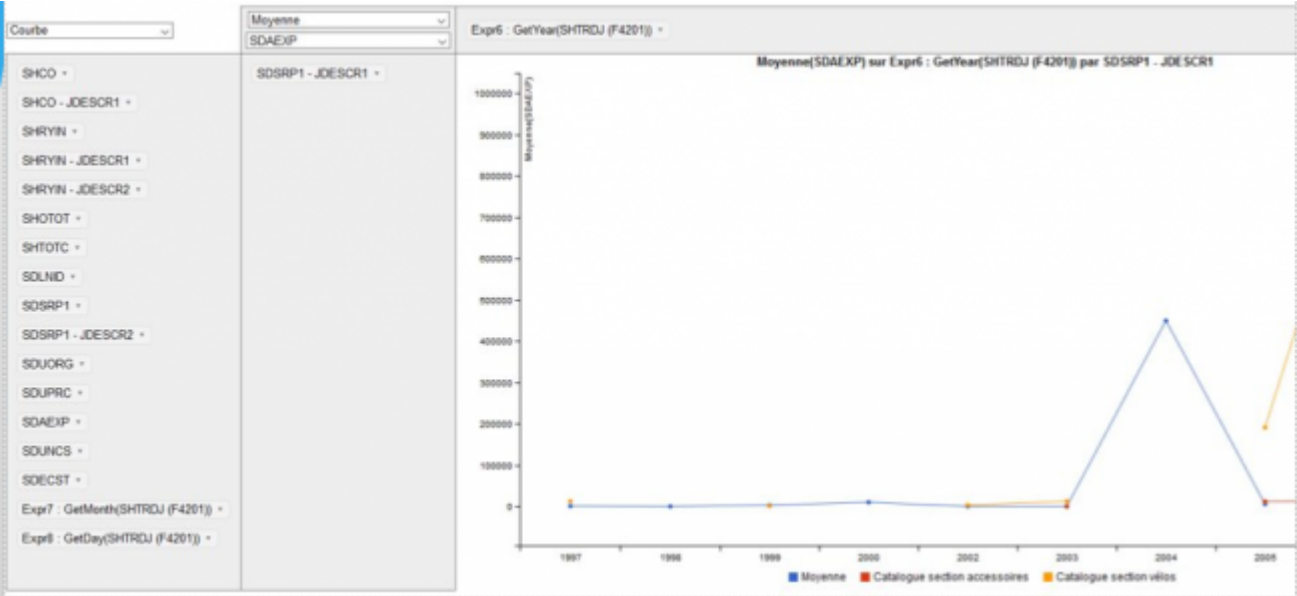
Expr6 : GetYear(SHTRDJ (F4201))	1997	1998	1999	2000	2002	2003	2004	2005	2006	2007	Totaux
SDSRP1 - JDESCR1	833,33	2,88	3 009,54	10 000,00		-5,64	450 000,00	5 458,67			5 963,88
Catalogue section accessoires						23,27		11 862,12	15 000,00		11 738,54
Catalogue section vélos	12 650,00		1 280,40		3 158,99	12 555,07	191 119,54	20 225,00	30 225,00		272 133,00
Totaux	5 566,00	2,88	2 813,85	10 000,00	2 945,75	8 187,38	450 559,61	51 624,29	45 225,00	30 225,00	43 794,55

Expr7 : GetMonth(SHTRDJ (F4201))

Expr8 : GetDay(SHTRDJ (F4201))

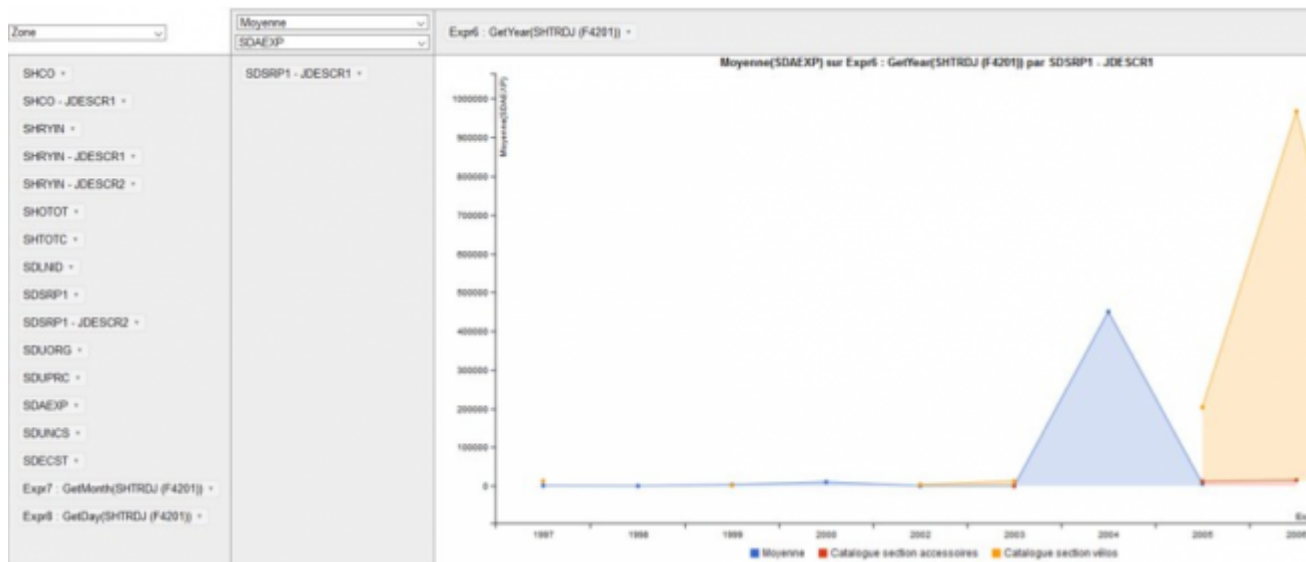
Curve

- Choice of fields to freely compose the curve.
- If intermediate points are missing, they are not extrapolated, leaving unconnected points.



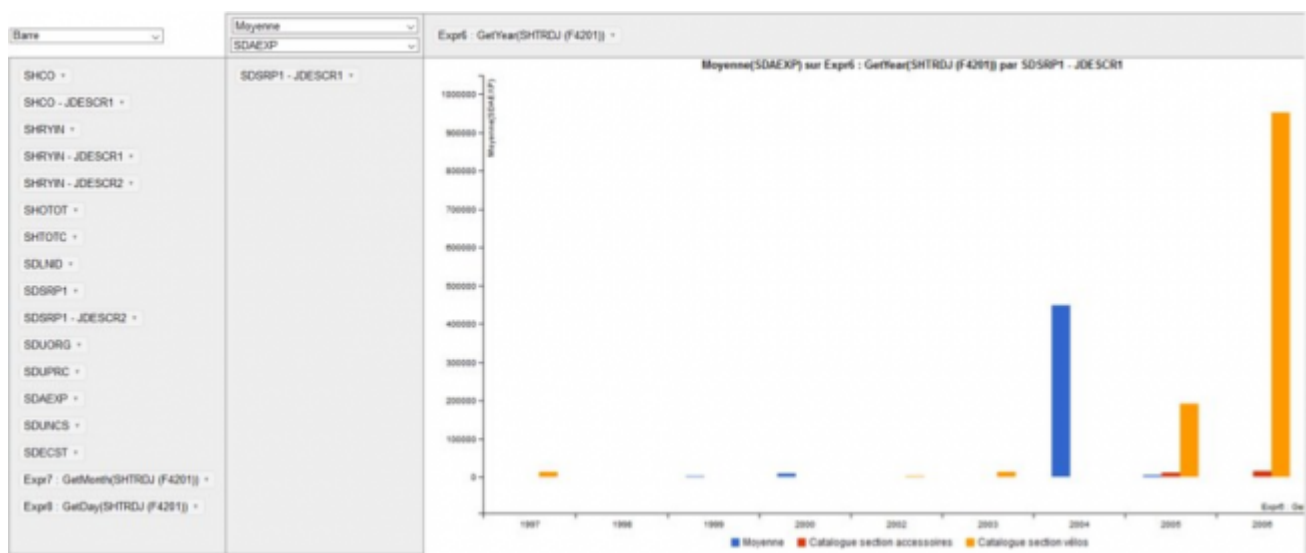
Zone

- Same as the curve but the area between the curve and the smallest value is colored.



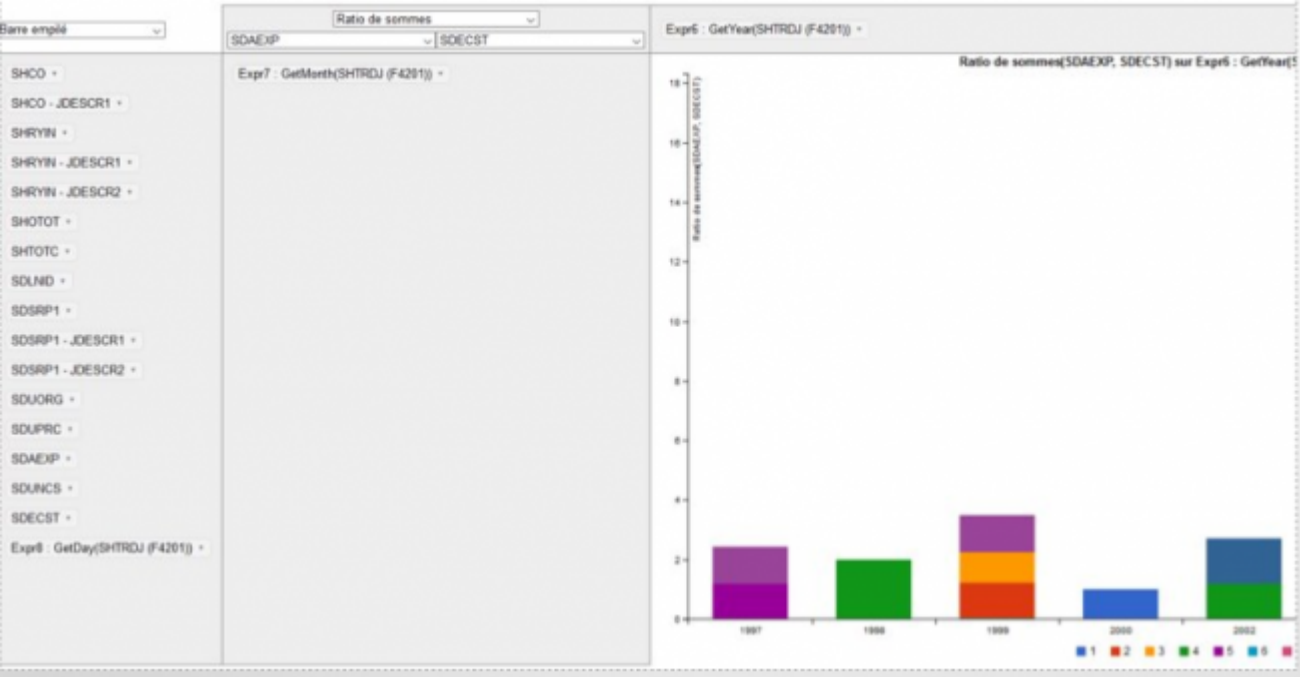
Bar chart

- Choice of fields to compose the graph freely.
- Colors and legend are done automatically.



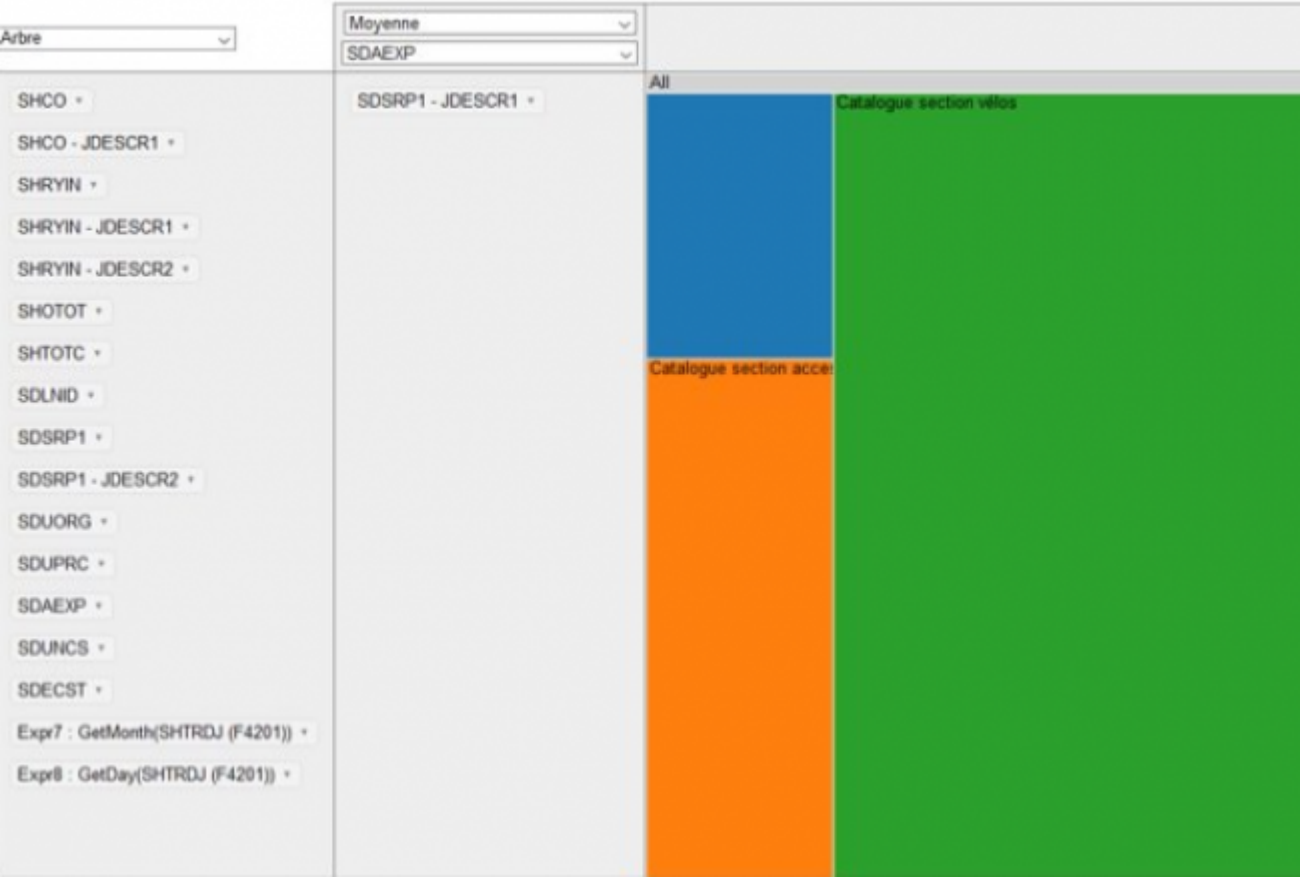
Stacked bar

- Same principle as bar rendering except that the values of the different groups are not shown side by side but are cumulative.



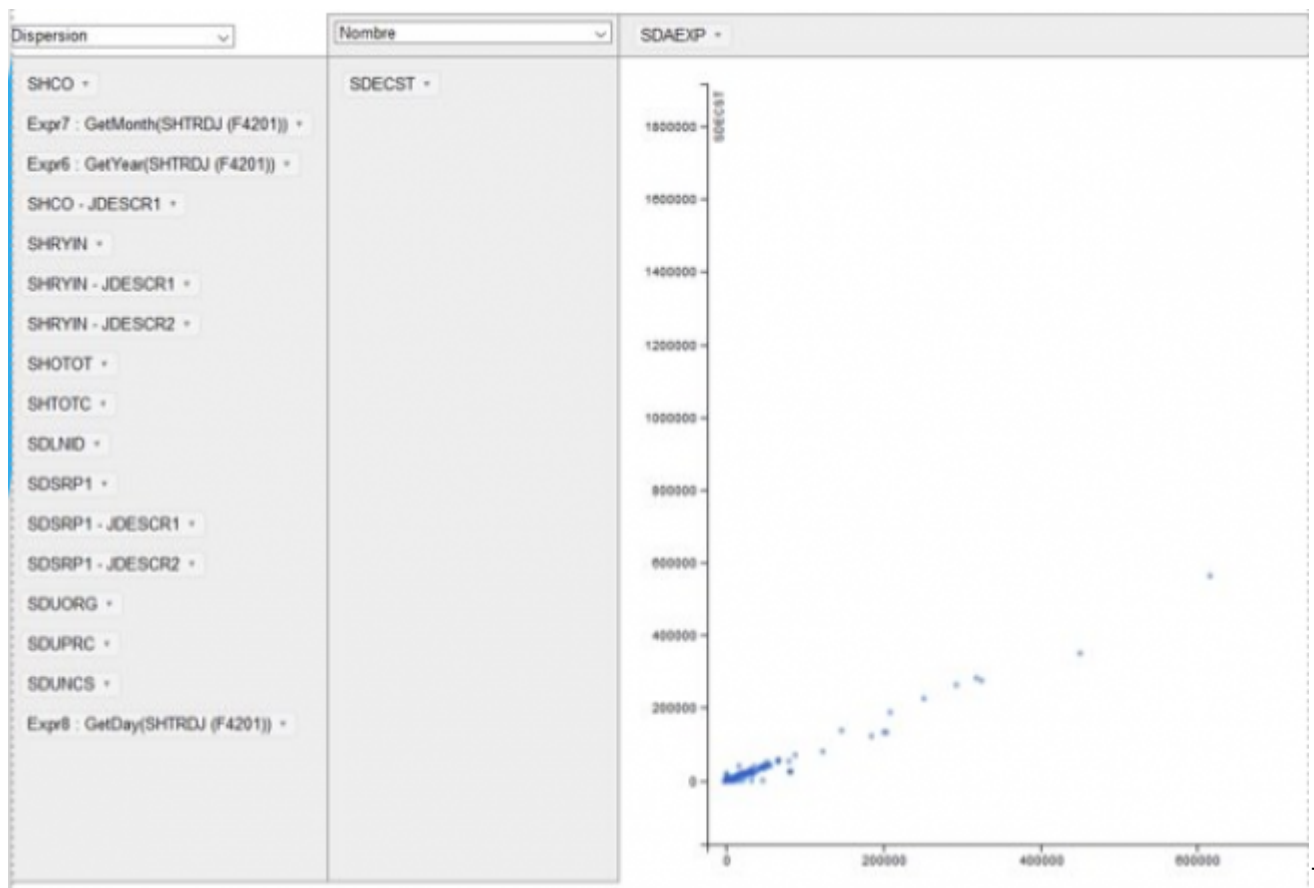
Treemap

- Choice of fields only in the header column of the dynamic table.
- The surface area of the elements is proportional to the ratio of their value on the total of the dynamic table.



Scatter

- Displays a point if a value exists in the data for a key corresponding to the torque (ordinate axis value, abscissa axis value).
- The type of calculation performed does not change the position of the points, but it does change the value indicated in the tooltip when passing over a point.



From:
<https://vigilens.wiki/dokuwiki/> - Vigilens Reporting Knowledge Garden

Permanent link:
https://vigilens.wiki/dokuwiki/doku.php?id=en:v8_0_0:web:menus:executionderequete:start&rev=1594198984

Last update: 2020/07/08 11:03

