

# Home Menu > Operations

The creation or modification screens are similar, they list all the properties of the function. In the case of a standard function, the properties can be viewed, but not modified.



The easiest way to write a function is to duplicate a standard function and adapt it.

The screenshot shows a dialog box titled "Enter an operation". It has a light blue header with a close button (X) in the top right corner. The dialog is divided into several sections:

- Operation type:** A dropdown menu.
- Operation name:** A text input field.
- Outcoming type:** A dropdown menu.
- Parameters type:** A large text area with three buttons below it: "Add...", "Change...", and "Delete".
- Symbol:** A text input field.
- Description:** A text input field.
- Display:** A text input field with three buttons below it: "Add...", "Change...", and "Delete".

At the bottom of the dialog, there are two buttons: "OK" and "Cancel".

## Types of Operation

- Manipulation of character strings, e.g. replacing a character.
- Manipulation of date, for example adding a number of days.
- Manipulation of numeric data, e.g. obtaining the absolute value of a number.
- Conversion operation, e.g. IfThenElse.
- Grouping operation, for example, the average.

## Operation name

## Returned Type

- String of Character
- Digital
- Date

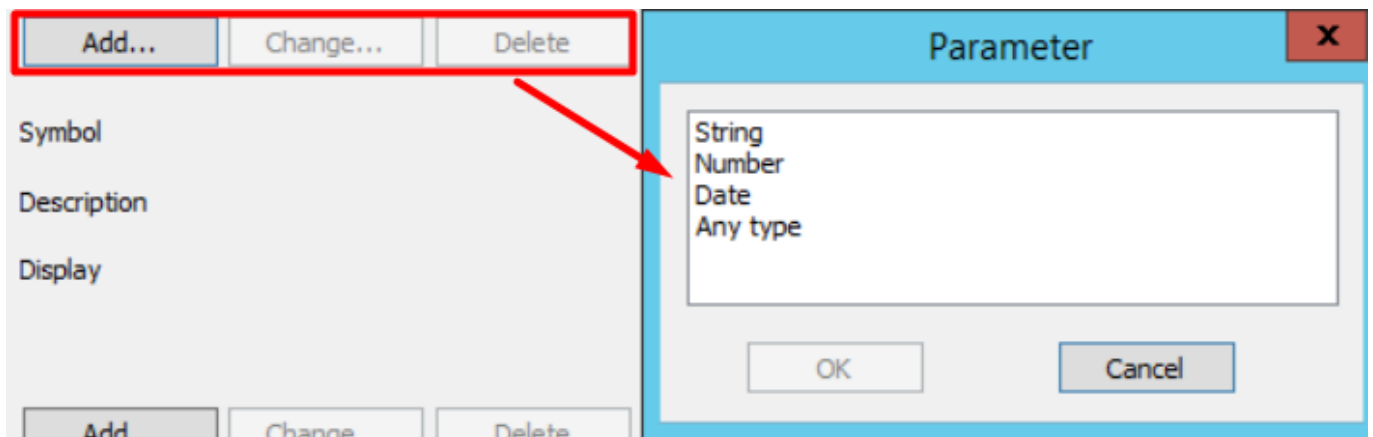
Some operations (for example, grouping operations) can return different types of data depending on

the type of parameters given to them. For example:

- Min( <Date> ) ⇒ <Date>
- Min( <Digital> ) ⇒ Digital

This can be done by defining a returned type identical to the first or last parameter entered.

## Parameter type



There is no limitation on the number of parameters. Each parameter can be of 3 types:

1. String of characters
2. Digital Numérique
3. Date

Some operations can use different types of parameters (e.g. grouping operations). In this case, it is possible to specify that the parameter in question can correspond to "Any type".



Some operations may not have an input parameter (e.g. DateCur).

## Symbol

## Description

## Preview

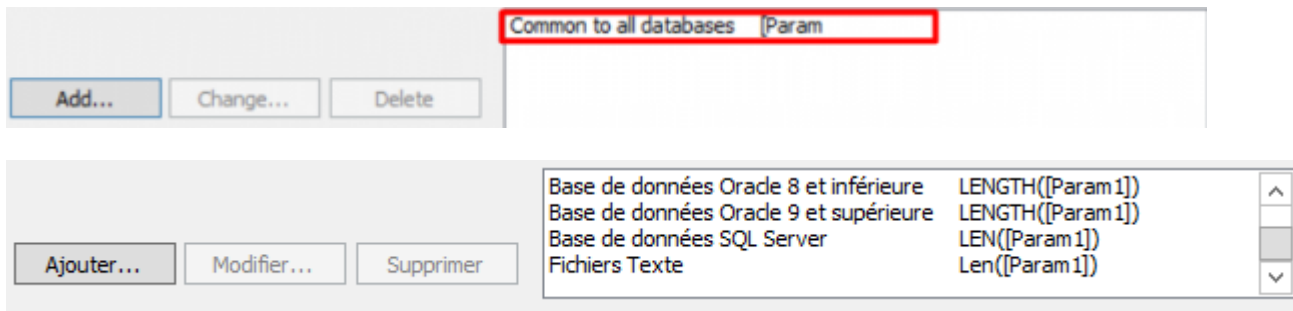
## Syntax

For each operation, it is possible to define syntaxes for several types of databases.

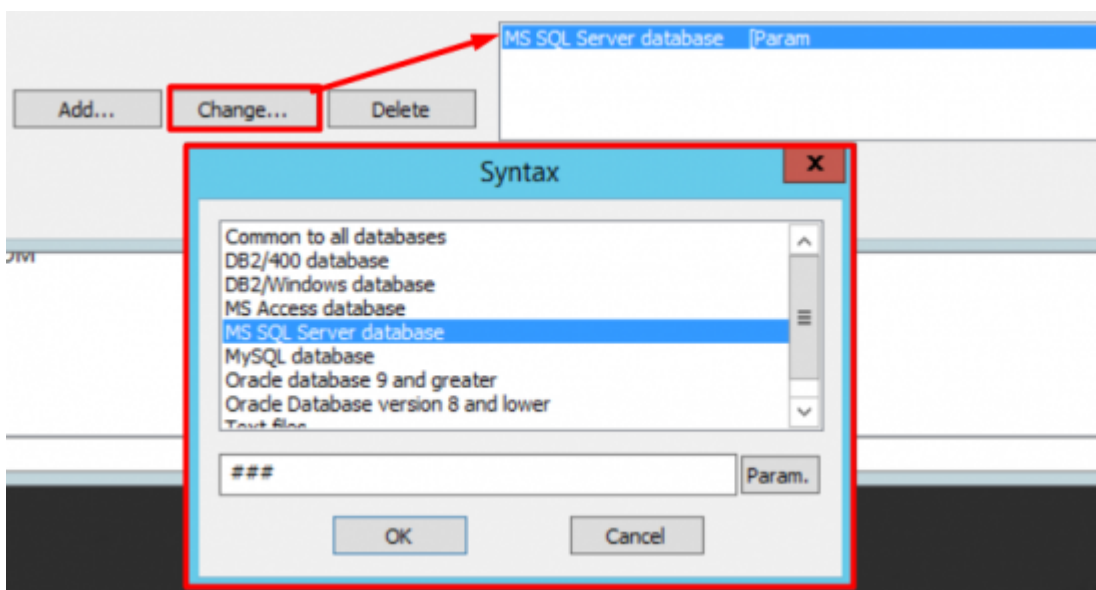


When creating a query, the user only sees the operations that have a syntax for the database used by the query.


If the syntax is the same for all database types, it is possible to define it only once by selecting Common to all databases.



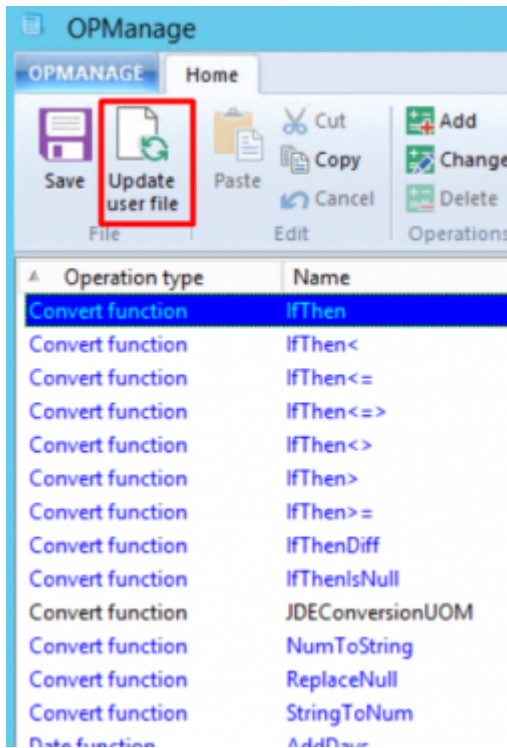
By selecting a syntax line and then clicking on Modify..., you open the input screen itself.



Each input parameter of the operation is referenced by a sequence of 3 # (###) followed by the order of appearance of the parameter in the list of input parameters (Ex: ###1, ###2, etc...).

 A parameter can appear several times in a syntax.

## User file update



Changes to functions are saved in a temporary file. They will be visible in Vigilens only after having updated the user file (“File \Update user file” menu).

From: <https://vigilens.wiki/dokuwiki/> - Vigilens Reporting Knowledge Garden

Permanent link: [https://vigilens.wiki/dokuwiki/doku.php?id=en:v8\\_0\\_0:opmanage:menus:accueil:operation&rev=1594890587](https://vigilens.wiki/dokuwiki/doku.php?id=en:v8_0_0:opmanage:menus:accueil:operation&rev=1594890587)

Last update: 2020/07/16 11:09

