

Installation and configuration of a Vigilens station

Use Case

This is the installation on an individual workstation or on an application server allowing to use Vigilens Designer and the other Windows applications of the Vigilens suite.

Minimum Technical Requirements

Operating System

Windows 32 or 64 bits.

- Windows Vista
- Windows Server 2008
- Windows 7
- Windows 8
- Windows Server 2012
- Windows 10

Hardware

Feedback from our installed base shows that a configuration with **4 vCPU** and **8 GB RAM** allows a satisfactory use of Vigilens.

Disk space

- minimum of 0.5 GB for the installation of Vigilens
- 20 GB recommended for a classic use of the software (queries, results files, ...)

ODBC drivers / OCI

The user workstation must first have the ODBC or OCI drivers corresponding to the databases to be requested. We recommend the use of the drivers provided by the editors of the corresponding databases (only these are validated and covered by our support).



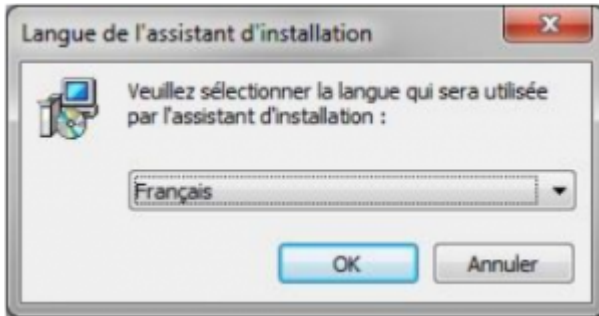
The application uses the 32-bit version of ODBC. There is a button in the AdminTool to access the correct version of the ODBC settings, see [the dedicated section of the AdminTool](#).

Installation

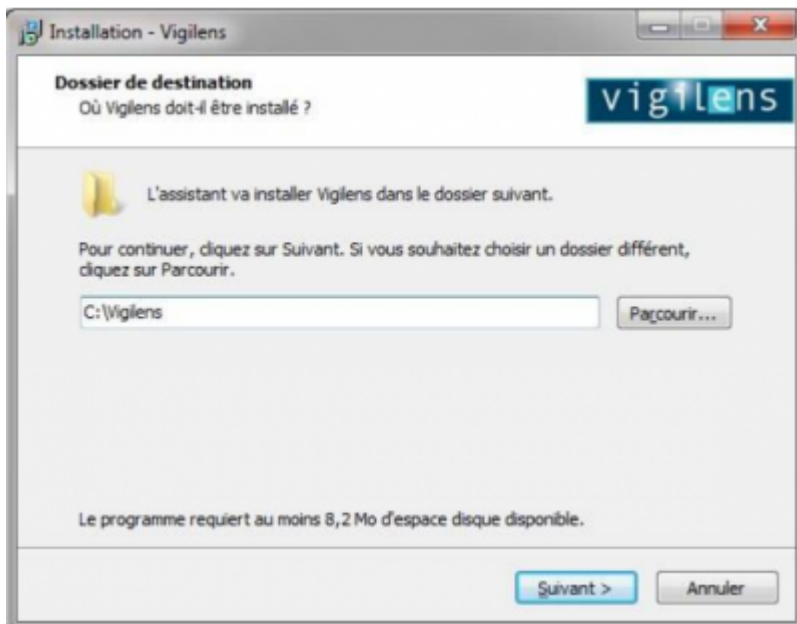
Start the installation by double-clicking on the provided executable file.

Select a language

This is the language used during installation.



Select an installation directory



It is not recommended to install Vigilens under "Program Files" or "Program Files (x86)" because this can cause problems when using some ODBC drivers.

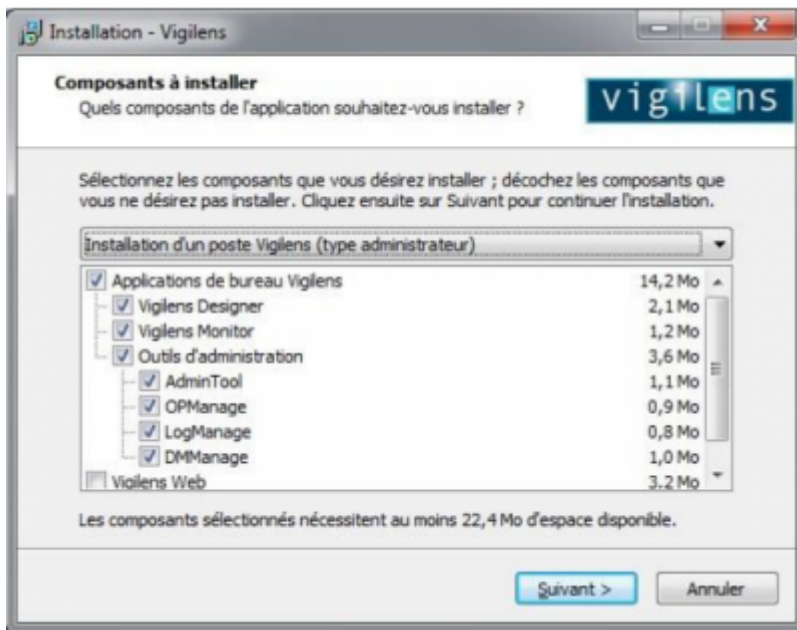


This screen only appears the first time a workstation is installed. In the event of any reinstallations, the previous installation folder is kept without the selection screen



appearing. In order to change the installation folder, the application must first be uninstalled (from the Windows control panel).

Select components to be installed

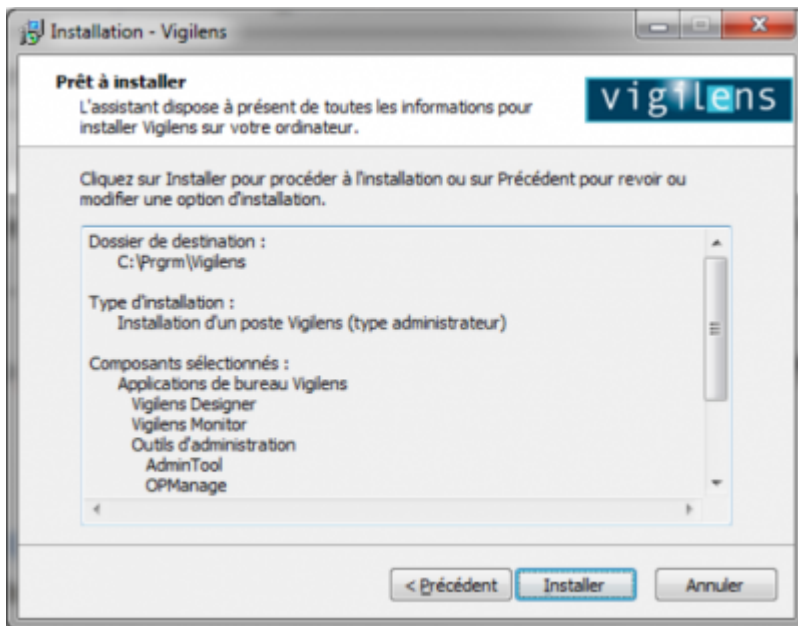


the Vigilens Tools Suite is made of 6 Windows applications.



It is necessary to install the AdminTool and LogManage applications on at least one workstation.

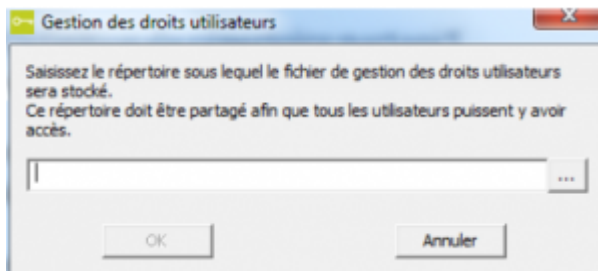
Summary



Setup

Define shared folder

The shared folder must be created in windows beforehand, shared and accessible to all Windows profiles using the Vigilens application. It is defined the first time the AdminTool application is launched.



The dialog box allows you to enter this directory. If it is located on another machine (server accessible by the network, for example), it is preferable to indicate it in a relative way `\\server\path\`. It will contain the following elements:

- A "Users.EVIDENS-Security" file containing the definition of groups, users and their rights and restrictions. This file is created at the first launch of the AdminTool application. It must be accessible in reading and writing by all users.
- The "LicenseGen.evsn" and "LicenseGen.dat" files related to the global license.
- A "DS" directory containing information on the shared data sources.
- A "ES" directory containing information about any shared data sources used for data export.
- An "OW.EVIDENS-Parameter" file containing the possible parameters related to the data sources corresponding to JD Edwards databases ("EnterpriseOne / OneWorld" or "World / WorldSoftware"). This file is created (if needed) by the AdminTool application. It must be readable by all users.

- A “CS” directory corresponding to the shared queries tree.
- A “Login” directory containing the files used to manage connections to Vigilens.
- A “Log” directory containing the trace files generated by Vigilens.

From:

<https://vigilens.wiki/dokuwiki/> - **Vigilens Reporting Knowledge Garden**

Permanent link:

https://vigilens.wiki/dokuwiki/doku.php?id=en:v8_0_0:installation:installationposte&rev=1595499497

Last update: **2020/07/23 12:18**

