

# Scheduled run

Automatically launching a query or a set of queries at regular intervals is a common need in companies. This is why Vigilens offers you a mechanism for scheduling your queries.

## Principle

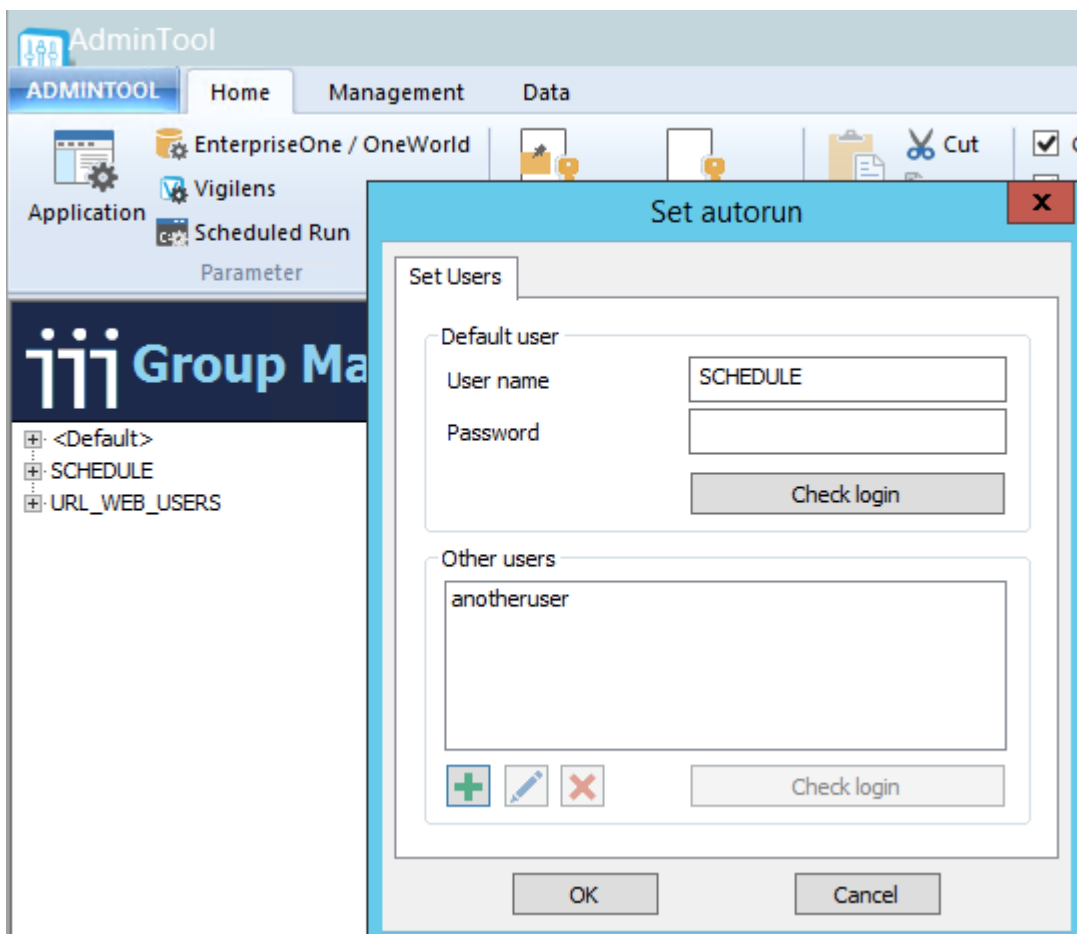
It simply uses [Windows Task Scheduler](#) to launch a command line. You can use either classic dos language (cmd) or Powershell.

```
Ex : C:\Vigilens\app\Vigilens.exe  
/vglAuto="C:\Vigilens\Work\Archives\DEMO\folder\myquery"  
/vglUser="SCHEDULE_FR"
```

## Setup

You do it in [AdminTool Batch output menu](#). #TBC

You have to define users who will be allowed to connect with a command line.



## Assistant



In Vigilens Designer, there is a [scheduling assistant](#). Use it to create the skeleton of your command, and adapt it to your needs. See our [URL syntax guide](#) below.

## User



If you want to be sure that a free connexion will be available at the moment job is triggered, it may be useful to create [a specific user with "Vigilens Dedicated" profile type](#).

## Syntax

### **/vglForceInstall**

- Define a new shared directory. This option is the same for [Vigilens Designer](#) and [AdminTool](#).

### **/vglExe=RequestName**

- run query *RequestName*
- only [shared queries](#) are allowed for running
- *RequestName* represents query relative path using shared directory as starting point, it means as it appears in **Vigilens Designer GUI**.

### **/vglAuto**

- Processes all queries inside a directory **interactively** provided by user
- For fully automated run, use /vglDir instead.

### **/vglDir=DirectoryName**

- Automatic processing of all queries inside the directory given as a parameter
- *DirectoryName* the full path for the directory to be processed, as it appears in the **windows file explorer** on machine processing the command-line.

### **/vglDirConf**

- profile used for automatic processing (/vglDir)



Starting with Windows Vista (or Server 2003), it is necessary to run this command as an administrator to allow processing by a task scheduler.

### **/vglUser=UserName**

- Used combined with /vglDir to specify a user other than default user (assuming it has been supplied by /vglDirConf)

### **/vglMail=AdresseMail**

- Used combined with /vglDir option to ask processing report (log) file to be sent

### **/vglNumFormat=DecimalsThousands**

The numerical values returned will use :

- the first character as the decimal separator.
- the second as the thousands separator

### **/vglOutput=OutputType**

- This optionnal setup is used combined with /vglExe.
- Force an output type other than the one defined at query level.
- possible values are
  - Grid : default
  - PDF
  - XLS
  - TXT

### **/vglPDFType=PDFFileType**

- Specify PDF output type
- possibles values are :
  - 0 Grid
  - 1 Report
- this parameter is mandatory with /vglOutput=PDF .

### **/vglPDFModel=PrintTemplate**

- Specify the grid print template or report template
- this setup is mandatory with /vglOutput=PDF

## **/vglMaxLineNumber=Number**

- Specify the maximum number of lines in the output.
- Beyond, query stops and returns an error message.
- This setup secures machines resources use.

## **Parameters passing**

- Processing parameters values are passed in the command-line using their short code
- syntax : /ShortCode=SelectedValue
- You cannot use wildcards as a parameter to set a selection

From:

<https://vigilens.wiki/dokuwiki/> - **Vigilens Reporting Knowledge Garden**

Permanent link:

[https://vigilens.wiki/dokuwiki/doku.php?id=en:v8\\_0\\_0:howto:schedule&rev=1594193424](https://vigilens.wiki/dokuwiki/doku.php?id=en:v8_0_0:howto:schedule&rev=1594193424)

Last update: **2020/07/08 09:30**

