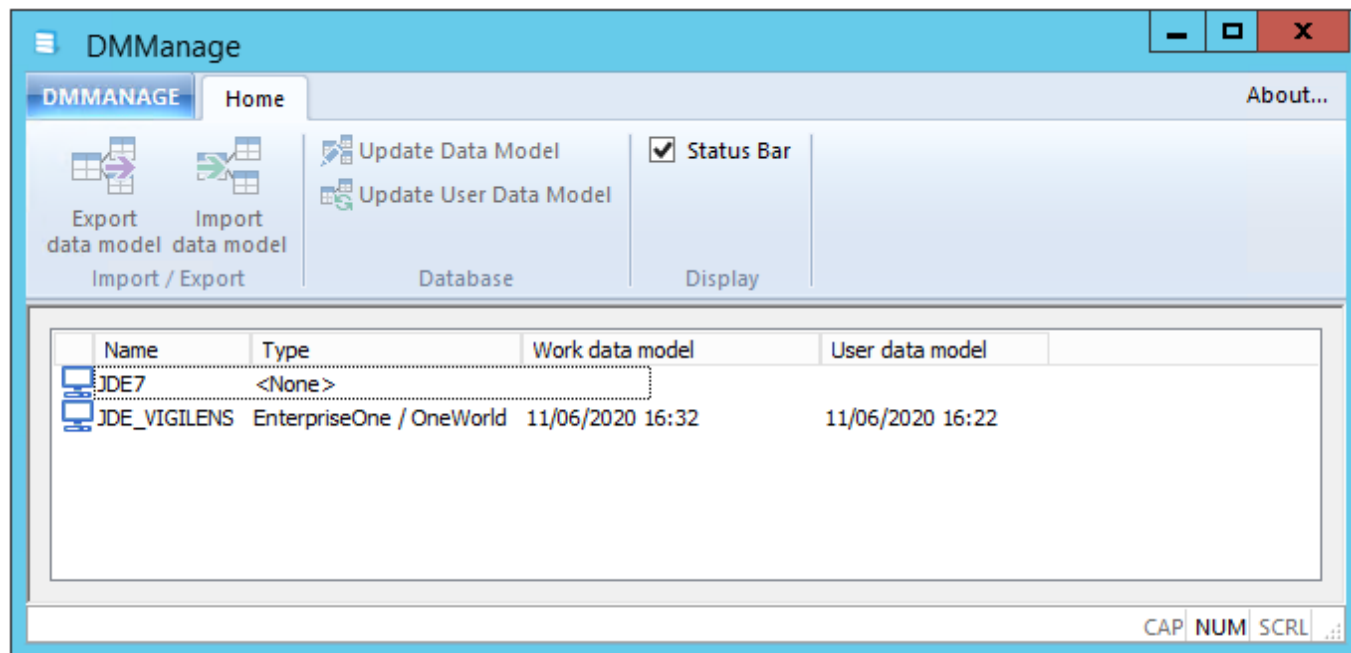




DMMManage

Introduction

DMMManage allows you to manipulate the descriptions and labels of tables and their fields. For JDE datasources, it's also possible to work at at alias level. These texts can be localized.



Connexion

DMMManage can be run:

- by windows menu by searching explicetely string DMMManage
- by .exe : <VigilensInstallationFolder>\DMMManage.exe

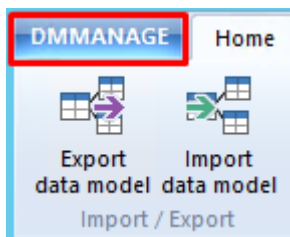
The connection is made with a user name defined by [the AdminTool management menu](#), and this user and his group must have appropriate rights ([see Access to applications](#)).



Menus

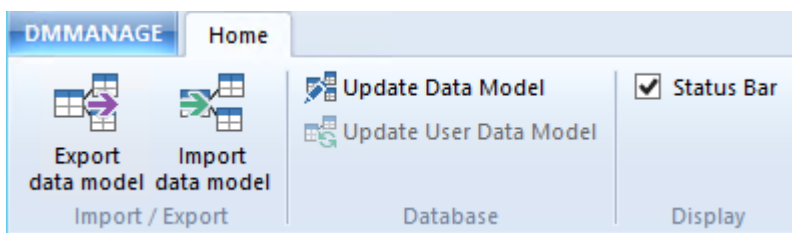
The menu action buttons apply to the data source selected in the lower panel.

DMMManage menu

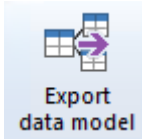


Import/export functions, identical to the Home menu.

Home Menu



Export Data Model



Export all or part of the descriptions to a csv file. [Detailed page](#)

Import Data Model




Import descriptions from a csv file previously created using the export button. [Detailed page](#)

Modify Data Model

 [Edit descriptions locally. Detailed page](#)

Update User Data Model

 Click on this button publishes the modifications to the common Vigilens repository from the local model

From:
<https://vigilens.wiki/dokuwiki/> - **Vigilens Reporting Knowledge Garden**

Permanent link:
https://vigilens.wiki/dokuwiki/doku.php?id=en:v8_0_0:dmmanage:start&rev=1601284586

Last update: **2020/09/28 11:16**

