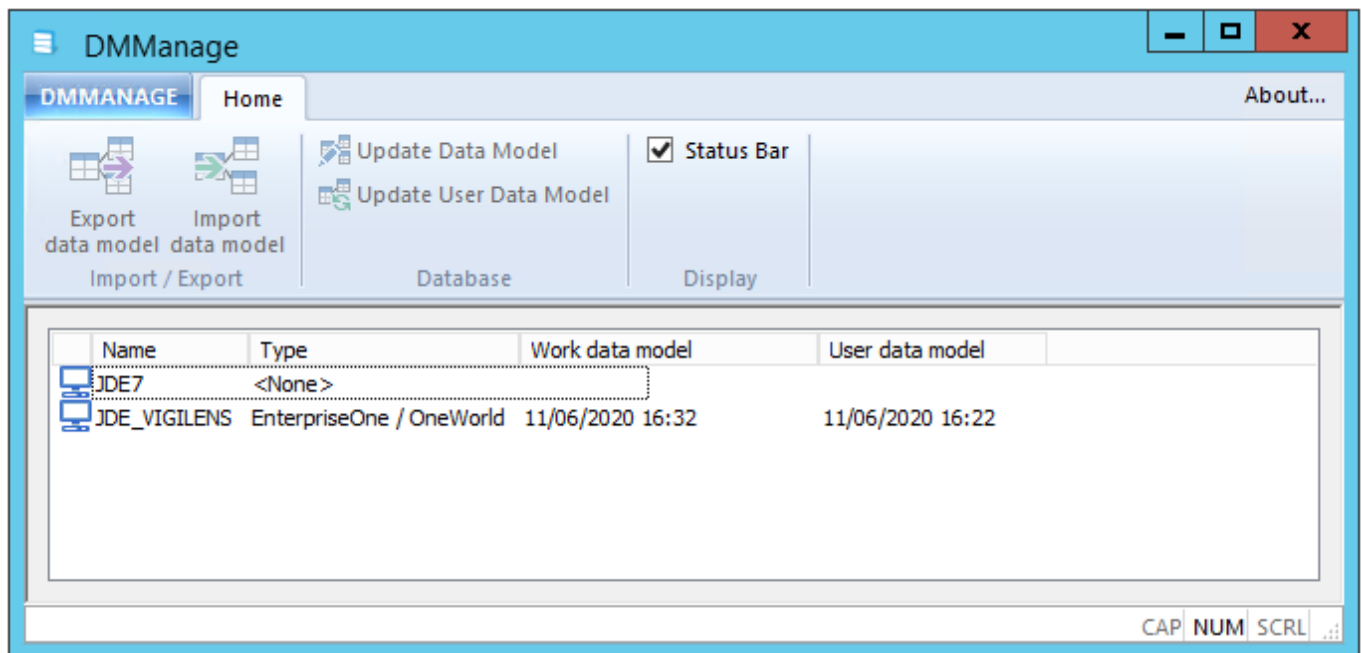




# DMManage

## Introduction

DMManage allows you to manipulate the descriptions and labels of tables, table fields, and data dictionary items. These texts can be localized.



## Connexion

DMManage can be run:

- by windows menu by searching explicetely string DMManage
- by .exe : <VigilensInstallationFolder>\DMManage.exe

The connection is made with a user name defined by [the AdminTool management menu](#), and this user and his group must have appropriate rights ([see Access to applications](#)).



## Menus

Except for export, the menu action buttons apply to the data source selected in the lower panel.

### DMManage menu



Import/export functions, identical to the Home menu.

### Home Menu



### Export Data Model

 [Export all or part of the descriptions. Detailed page](#)


### Import Data Model

 [Import descriptions. Detailed page](#)

## Modify Data Model

 [Edit descriptions locally. Detailed page](#)

## Update User Data Model

 Click on this button publishes the modifications to the common Vigilens repository from the local model

From:

<https://vigilens.wiki/dokuwiki/> - **Vigilens Reporting Knowledge Garden**

Permanent link:

[https://vigilens.wiki/dokuwiki/doku.php?id=en:v8\\_0\\_0:dmmanage:start&rev=1595322162](https://vigilens.wiki/dokuwiki/doku.php?id=en:v8_0_0:dmmanage:start&rev=1595322162)

Last update: **2020/07/21 11:02**

