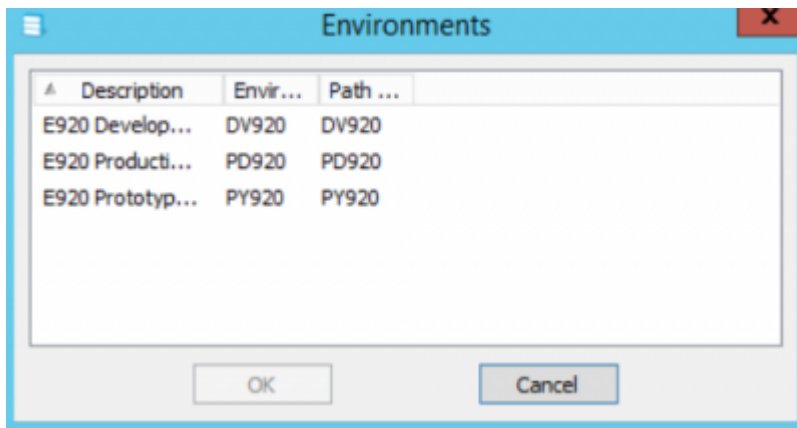


# Home Menu > Modify Data Model

- When changing the data model, the first screen asks for an environment. It is from this environment that the structures of the objects will be read.



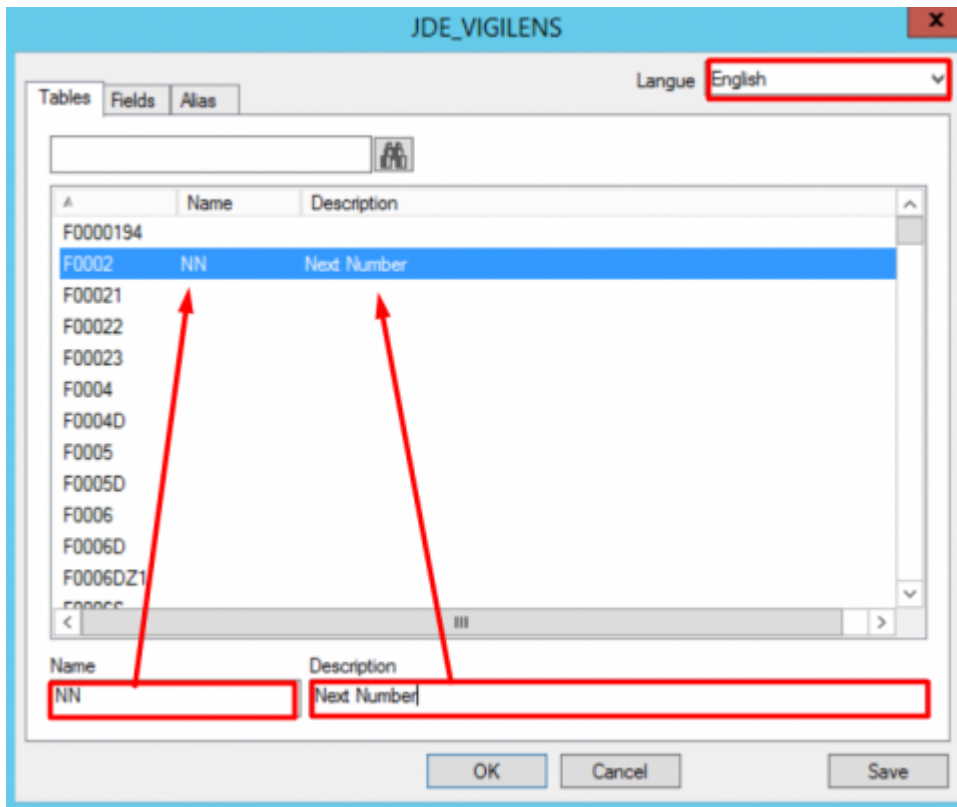
Descriptions are common to all environments.



For each of the following screens, the search tool allows you to quickly locate the items to be changed.

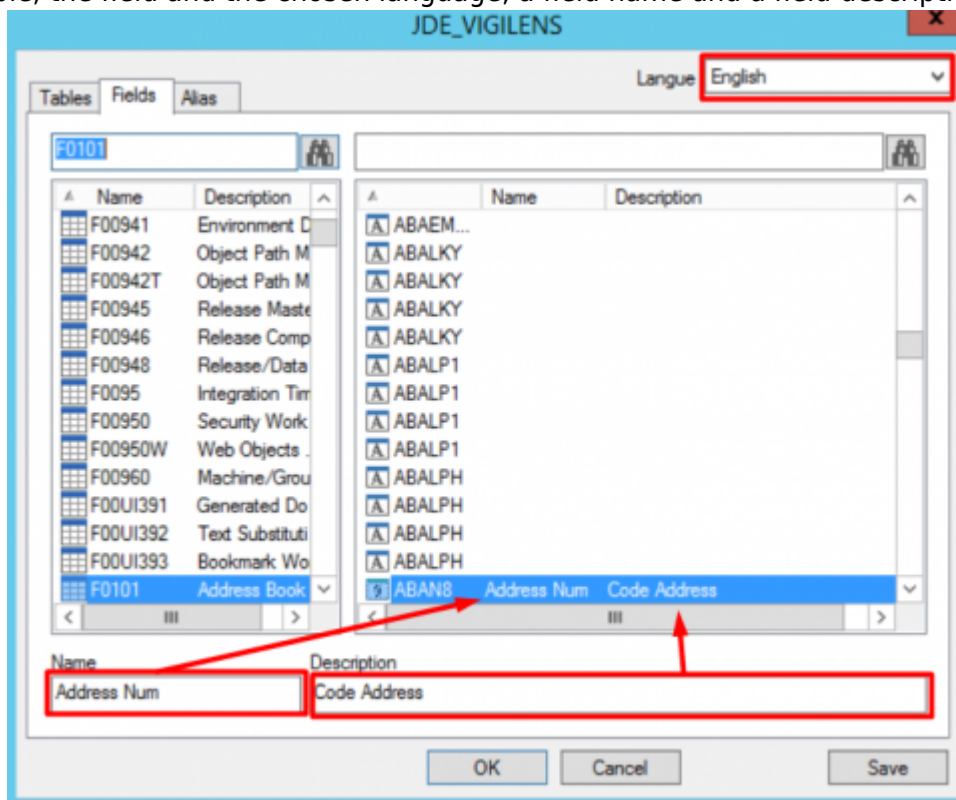
## Table

For the table and the chosen language, a name and a description of the table can be assigned.



## Fields

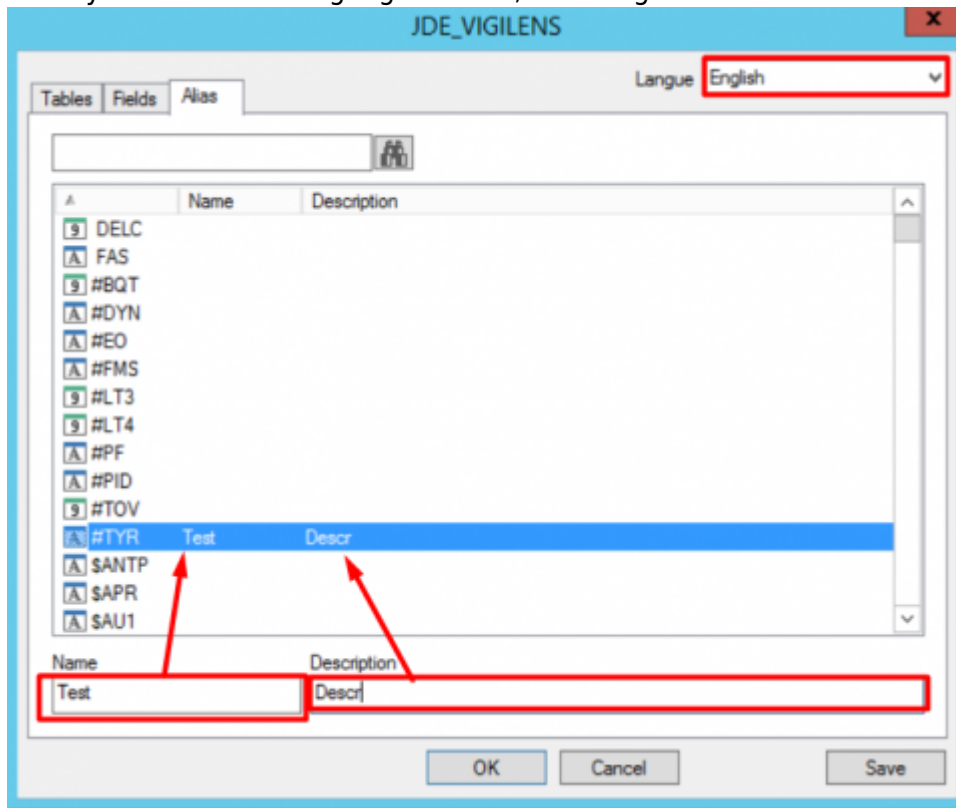
For the table, the field and the chosen language, a field name and a field description can be



assigned:\

# Aliases

For the data dictionary alias and the language chosen, we can give the DD item a name and



description: \n-

From: <https://vigilens.wiki/dokuwiki/> - Vigilens Reporting Knowledge Garden

Permanent link: [https://vigilens.wiki/dokuwiki/doku.php?id=en:v8\\_0\\_0:dmmanage:menus:accueil:modification&rev=1595331839](https://vigilens.wiki/dokuwiki/doku.php?id=en:v8_0_0:dmmanage:menus:accueil:modification&rev=1595331839)

Last update: 2020/07/21 13:43

