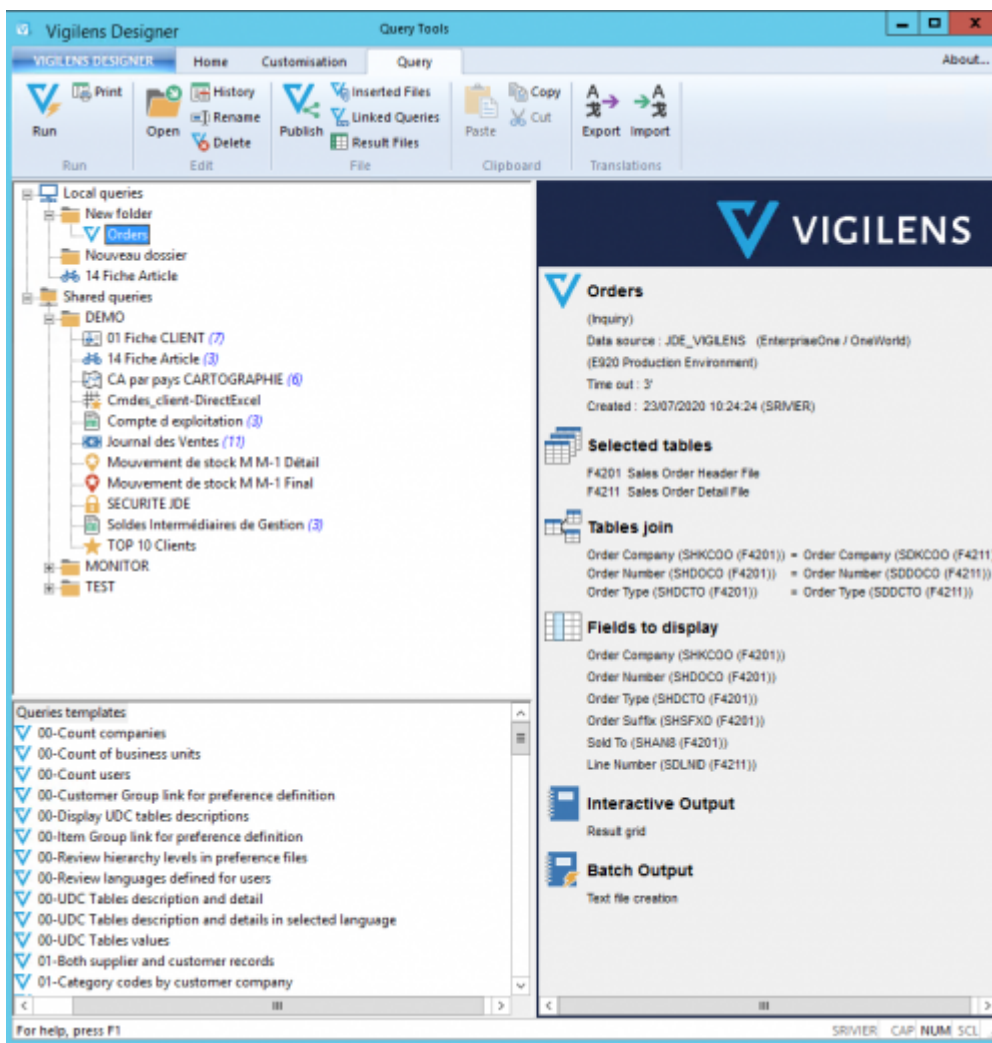




Designer

Description

Construction and execution of queries.



Login

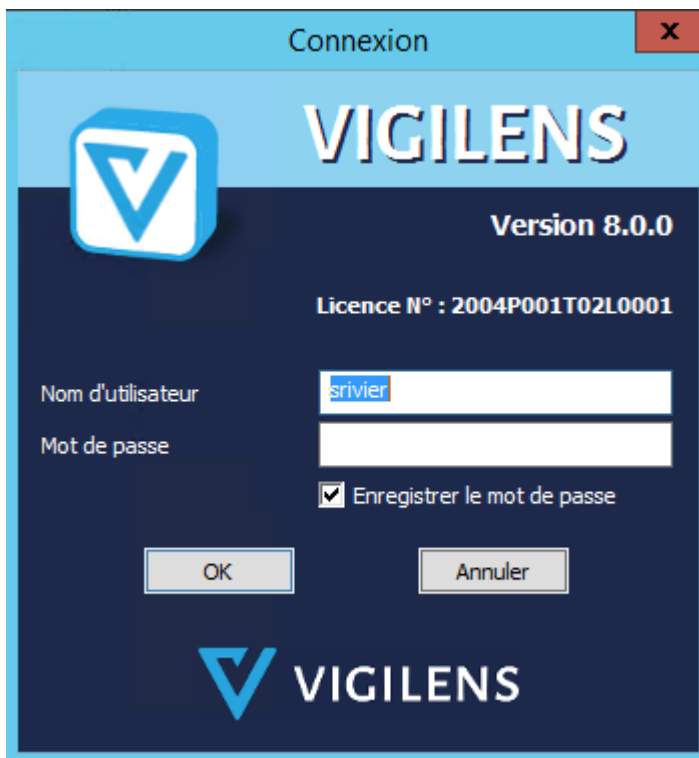
The Designer can be launched

- through the windows menu by searching explicitly for Vigilens
- by its .exe : <Vigilens installation folder>\Vigilens.exe

The connection is made with a user name defined by the [AdminTool management menu](#), and this user and its group must have appropriate rights ([see Access to applications](#)).

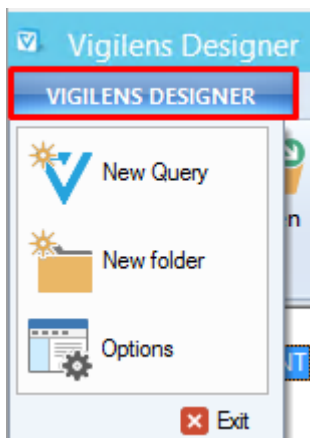


The Admin user cannot be used to connect to the Vigilens Designer application.



Menus

VIGILENS DESIGNER

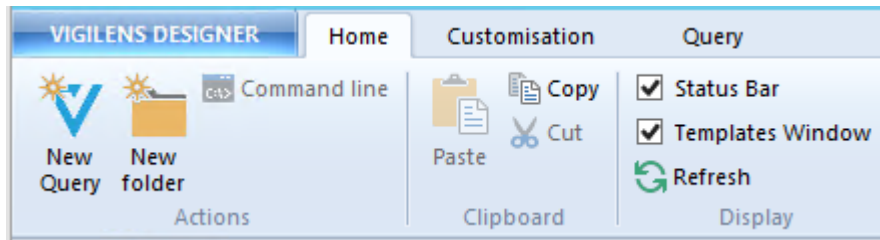


This quick menu offers 3 common actions

- query creation, identical to the Home menu.
- Creation of a folder, identical to the menu Home.

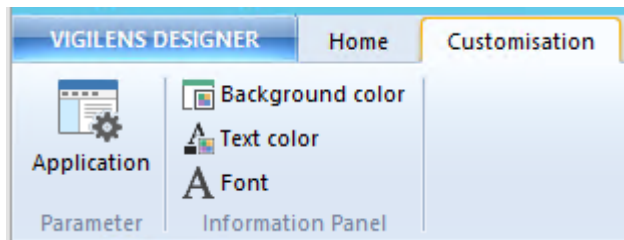
- application options, same as in the Customisation menu.

Home



Creating queries and directories

Customisation



Application Appearance Settings and Options

Query



This menu appears only if a query is selected [on of the panels](#).



Modification and processing of an existing query

From: <https://vigilens.wiki/dokuwiki/> - **Vigilens Reporting Knowledge Garden**

Permanent link: https://vigilens.wiki/dokuwiki/doku.php?id=en:v8_0_0:designer:start&rev=1599741849

Last update: **2020/09/10 14:44**

