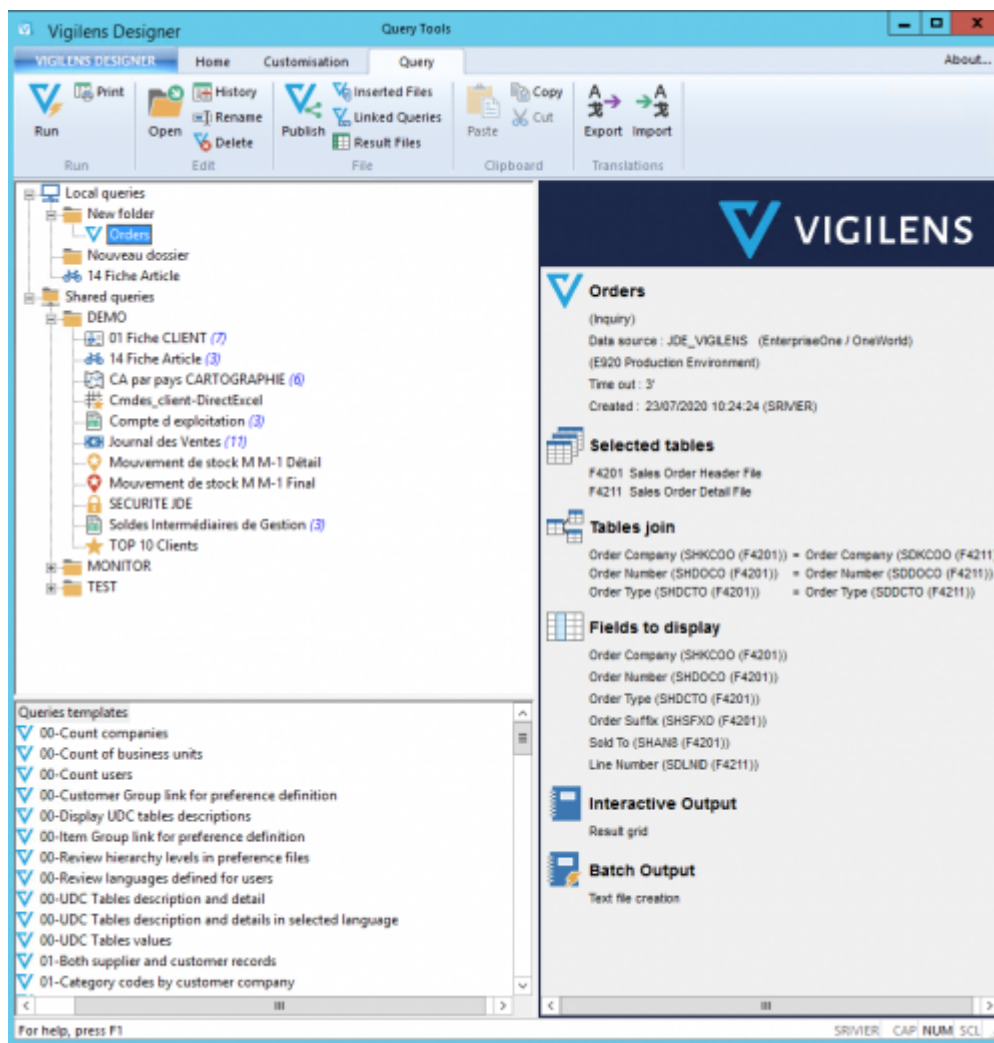




# Designer

## Description

Construction and execution of queries.



## Login

The Designer can be launched

- through the windows menu by searching explicitly for Vigilens
- by its .exe : <Vigilens installation folder>\Vigilens.exe

The connection is made with a user name defined by the [AdminTool management menu](#), and this user and its group must have appropriate rights ([see Access to applications](#)).



The Admin user cannot be used to connect to the Vigilens Designer application.

Connexion

**VIGILENS**

Version 8.0.0

Licence N° : 2004P001T02L0001

Nom d'utilisateur:

Mot de passe:

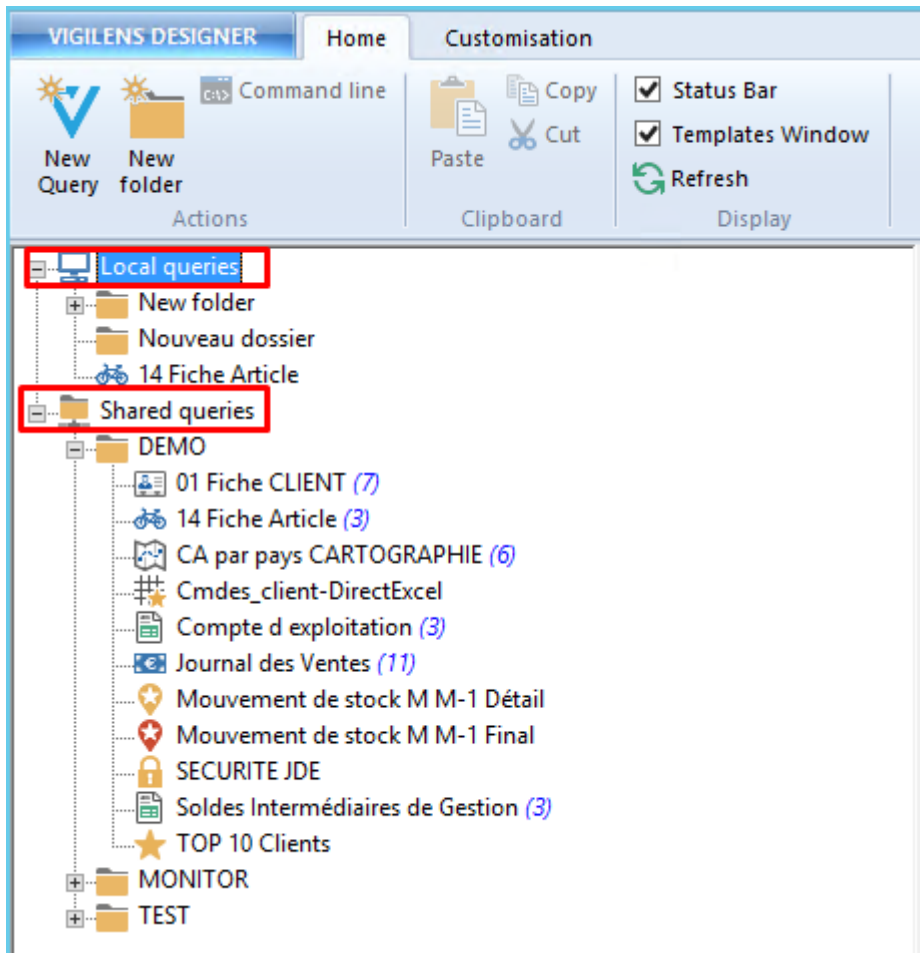
☒ Enregistrer le mot de passe

OK Annuler

**VIGILENS**

## Panels

### Local and shared queries



- The **local queries** folder contains all the queries being created (this is the development environment), only authorized DESIGNER users can create execute or modify these queries.

Once finalized, the queries are published and transferred to the shared queries folder.

- The **shared queries** folder contains all the queries accessible via the WEB interface. These queries can be executed by DESIGNER and VIEWER users. The queries in the shared folder cannot be modified.

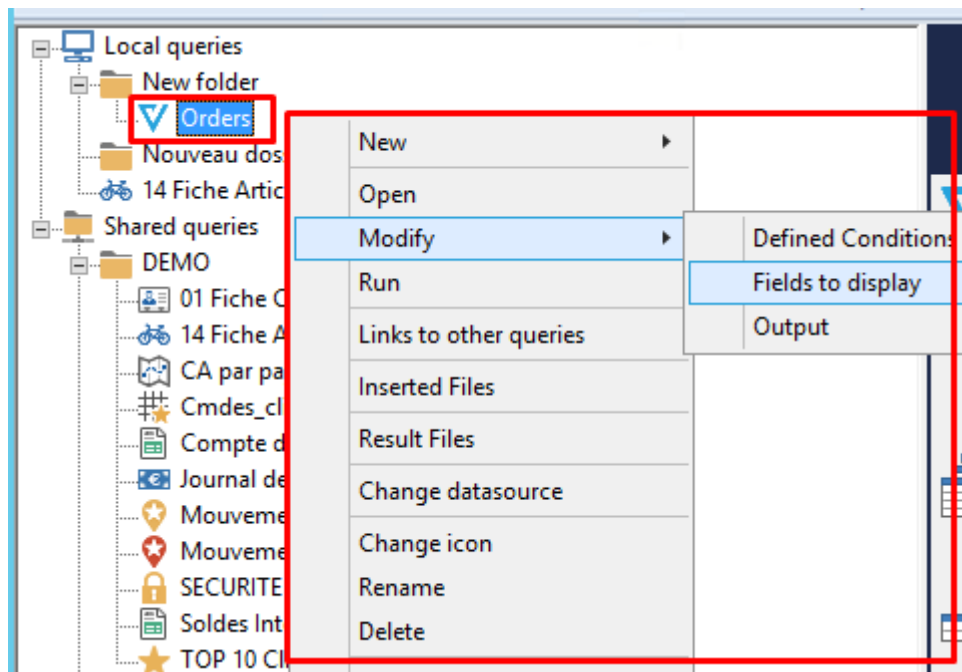
Modifying the original query in the existing query folder does not result in any modification in the shared query folder.

To apply the changes made in the existing query folder to the shared queries you will have to re-share the queries.

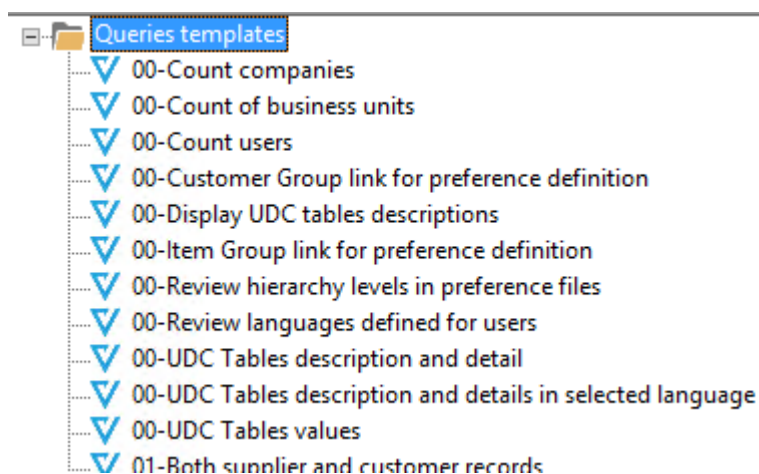


It is possible to copy a shared query to paste it into existing queries so that it can be modified.

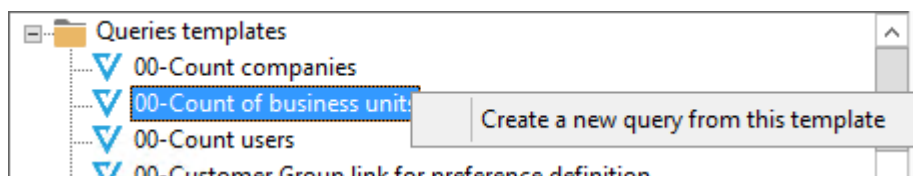
Most of the menu actions are accessible by right-clicking on the target item.



## Queries Templates




Right click on a template to create a query from this example.



## Overview


It allows you to quickly consult the essential information of the selected query, without having to open the query.



## 00-Display UDC tables descriptions


(Inquiry)

Description : TEMPLATE - INQUIRY - PEOPLESFT ENTERPRISE ONE (version 8.0 and lower)  
GENERAL SYSTEM (00)  
Display UDC tables descriptions - All systems



### Selected tables


F0005 User Defined Codes



### Defined conditions


Select records that match...

Product Code (DRSY (F0005)) = {System Code}




### Fields to display

Product Code (DRSY (F0005))  
User Defined Codes (DRRT (F0005))  
User Defined Code (DRKY (F0005))  
Description (DRDL01 (F0005))  
Description 02 (DRDL02 (F0005))  
Special Handling Code (DRSPHD (F0005))




### Sequence criteria

- Product Code (DRSY (F0005))
- User Defined Codes (DRRT (F0005))
- User Defined Code (DRKY (F0005))
- Description (DRDL01 (F0005))
- Description 02 (DRDL02 (F0005))
- Special Handling Code (DRSPHD (F0005))



### Interactive Output

Result grid



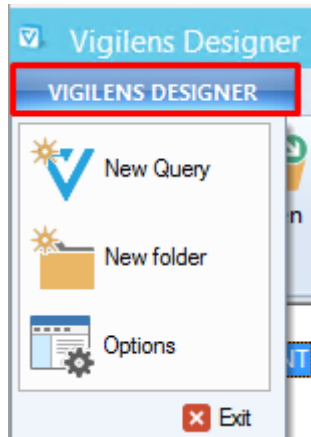
### Batch Output

Text file creation

The appearance of this panel is configurable via the [customisation menu](#).

## Menus

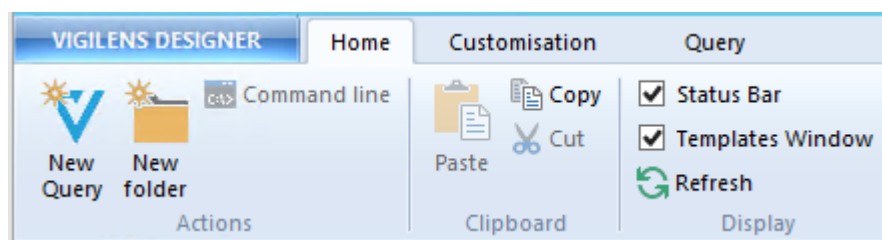
### VIGILENS DESIGNER



This quick menu offers 3 common actions

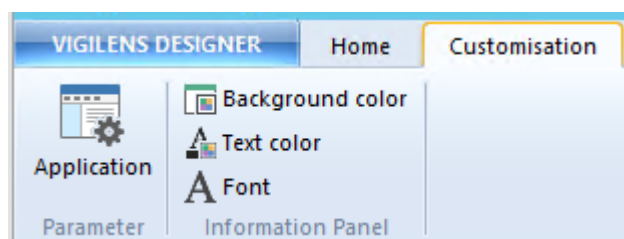
- query creation, identical to the Home menu.
- Creation of a folder, identical to the menu Home.
- application options, same as in the Customisation menu.

## Home



[Creating queries and directories](#)

## Customisation

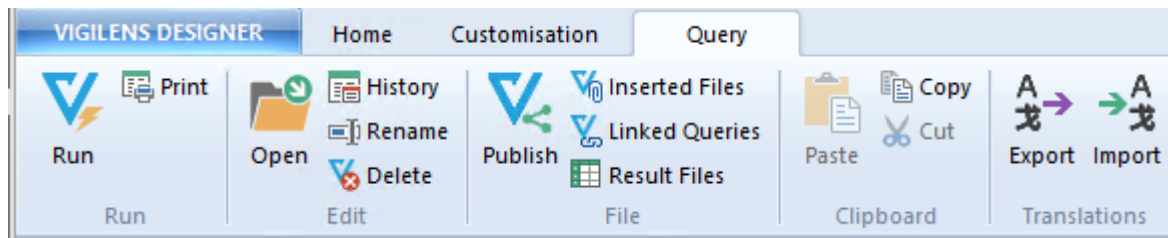


[Application Appearance Settings and Options](#)

## Query



This menu appears only if a query is selected [on of the panels](#).



### Modification and processing of an existing query

From:

<https://vigilens.wiki/dokuwiki/> - **Vigilens Reporting Knowledge Garden**

Permanent link:

[https://vigilens.wiki/dokuwiki/doku.php?id=en:v8\\_0\\_0:designer:start](https://vigilens.wiki/dokuwiki/doku.php?id=en:v8_0_0:designer:start)

Last update: **2020/09/10 15:02**

