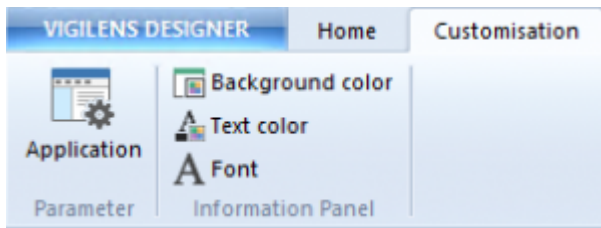
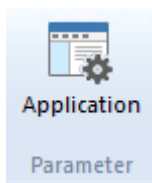


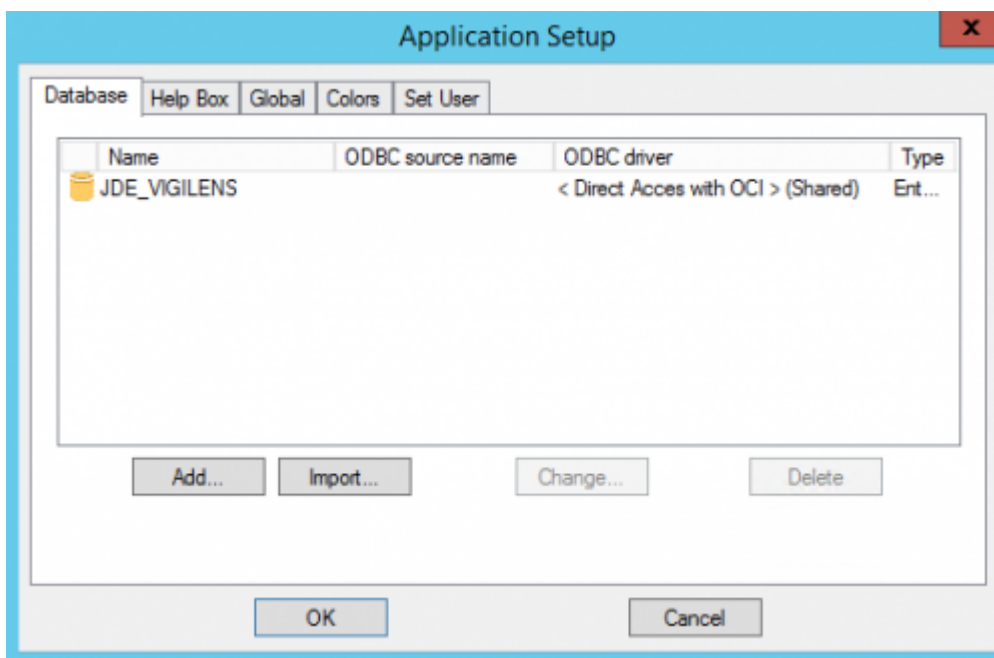
Customisation Menu



Parameterization



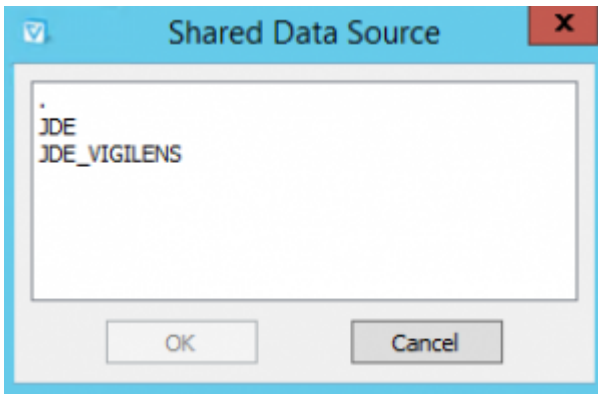
Database



This screen is the same as [AdminTool](#), except that it has an Import button while the [AdminTool](#) has a Share button.

The Import button lets you to automatically retrieve the definition of a previously shared data source.

When you click on the Import button, a dialog box asks which data source must be imported.

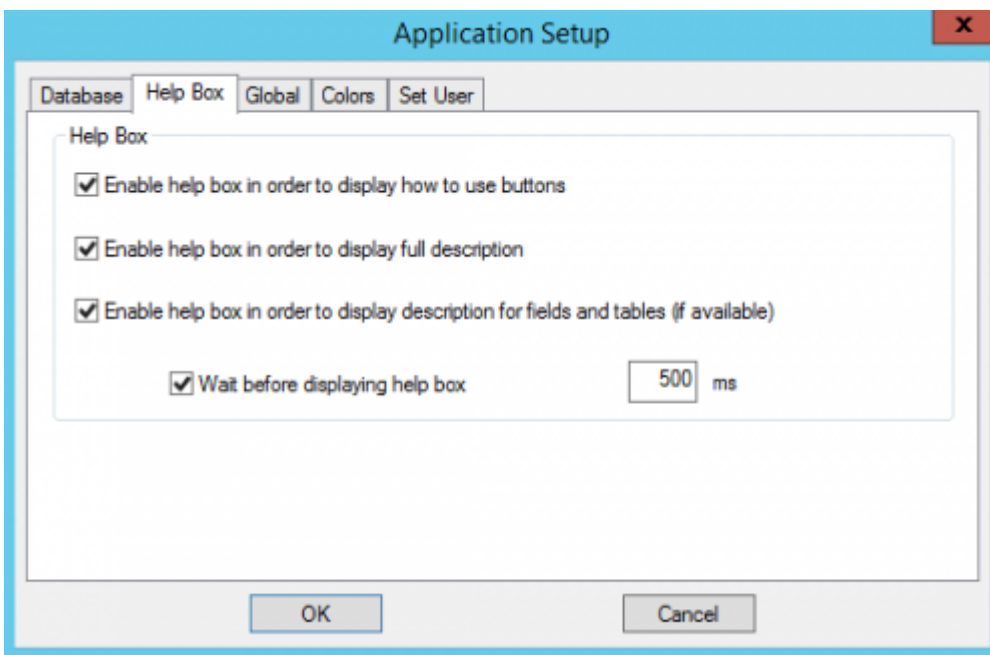


. It is possible to import several data sources at the same time.



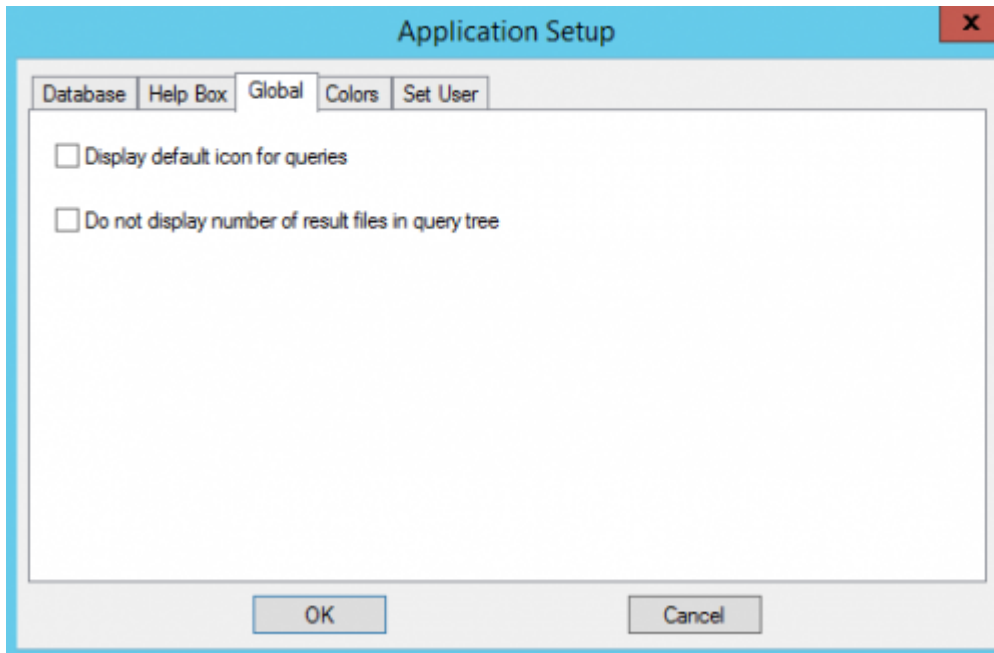
In order to take advantage of the specific functionalities of JDE data sources, it is imperative that the data source be imported (even if it already exists on the machine). An imported data source can be recognized by the name of the ODBC driver that appears in the list of databases. For an imported source, the driver name must be "< Direct access via OCI > (Shared)" for an Oracle type database or "Vigilens - Shared DataSource" for a connection via ODBC.

Help Box



Identical to [AdminTool](#)

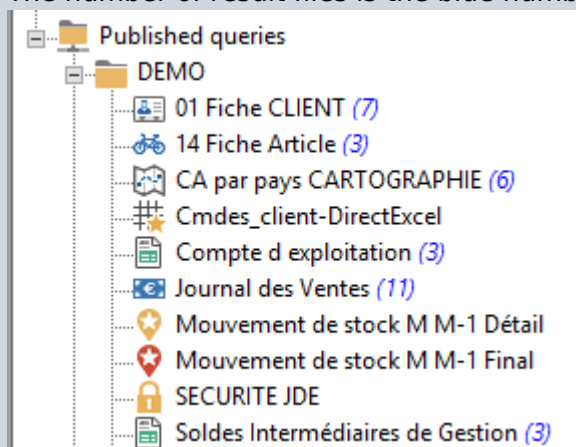
Global



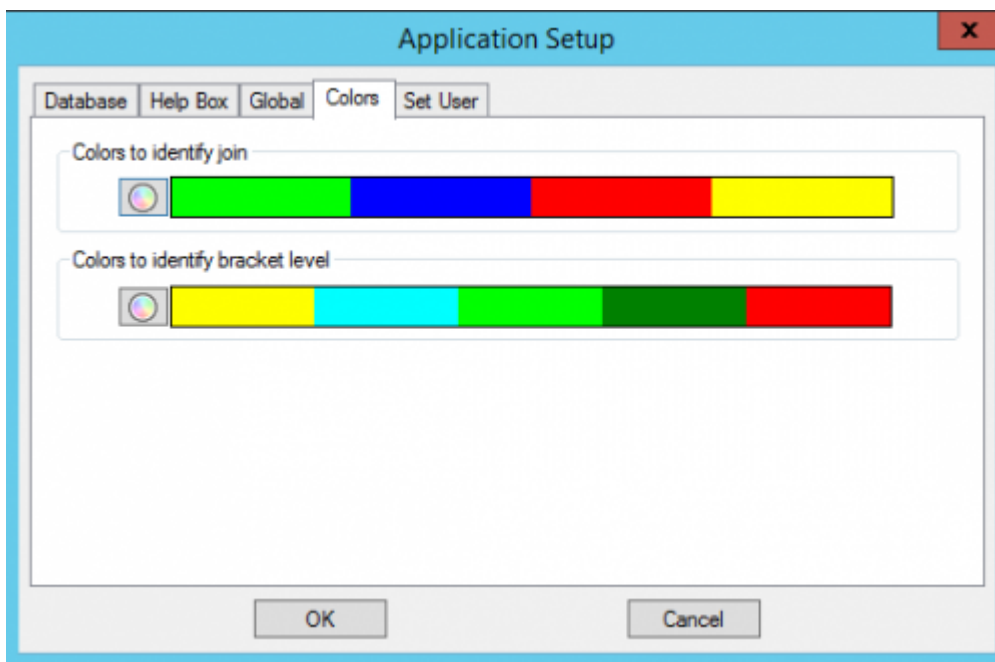
The options in this screen allow to optimize the response times for machines with access to queries with a high latency.

- Use a generic icon to display queries : Replace any specific icons associated with the queries by a generic icon to reduce response times.
- Do not display the number of result files in the query tree : Allows a faster display of the list of queries.

The number of result files is the blue number in brackets in the [query panel](#)

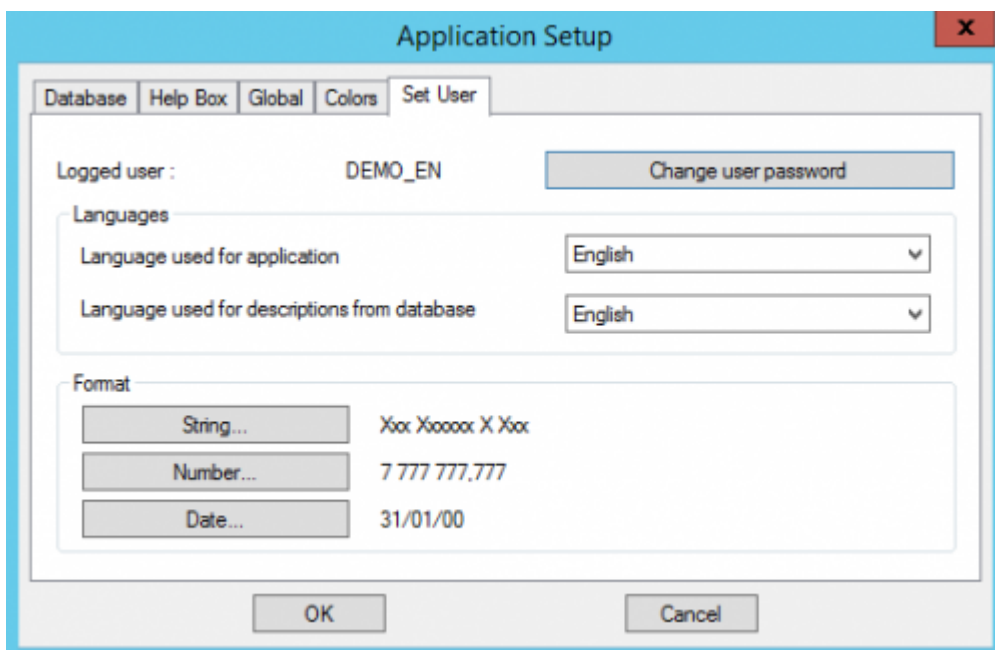


Color



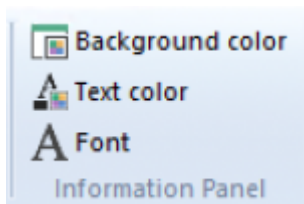
Vigilens uses different colors in order to quickly identify joints and interlocking brackets. It is possible, in this screen, to modify the number of colors used, the order of the colors as well as the colors themselves.

Set User

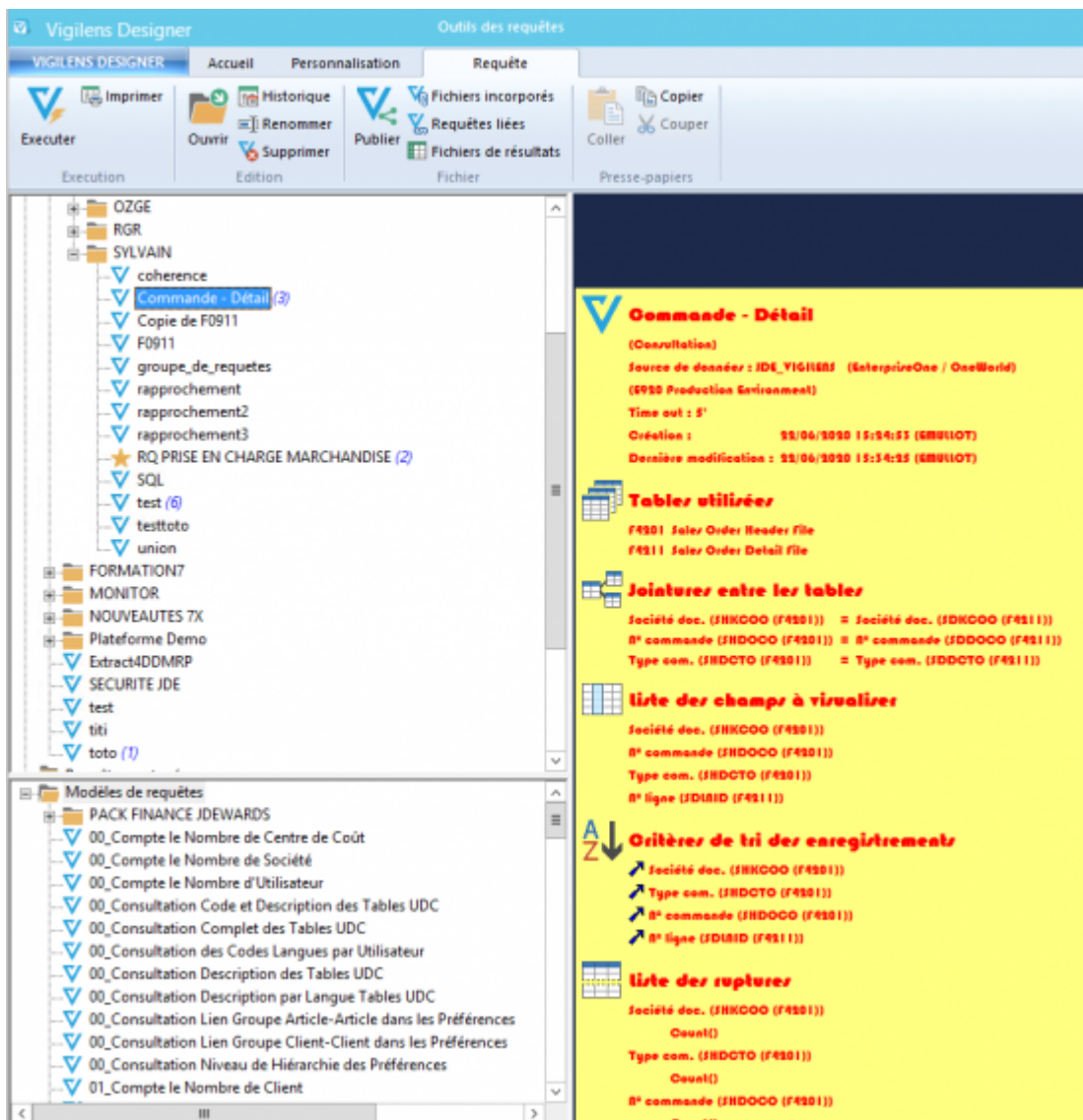


Identical to the screen present in the application [AdminTool](#), with in addition the possibility to specify, for the connected user, formats different from those defined in Vigilens (see [Vigilens Settings](#)).

Information panel



This is where you can customize the panel [Overview](#).



From: <https://vigilens.wiki/dokuwiki/> - **Vigilens Reporting Knowledge Garden**

Permanent link: https://vigilens.wiki/dokuwiki/doku.php?id=en:v8_0_0:designer:menus:personnalisation:start

Last update: **2020/09/28 10:59**

