

UNION query

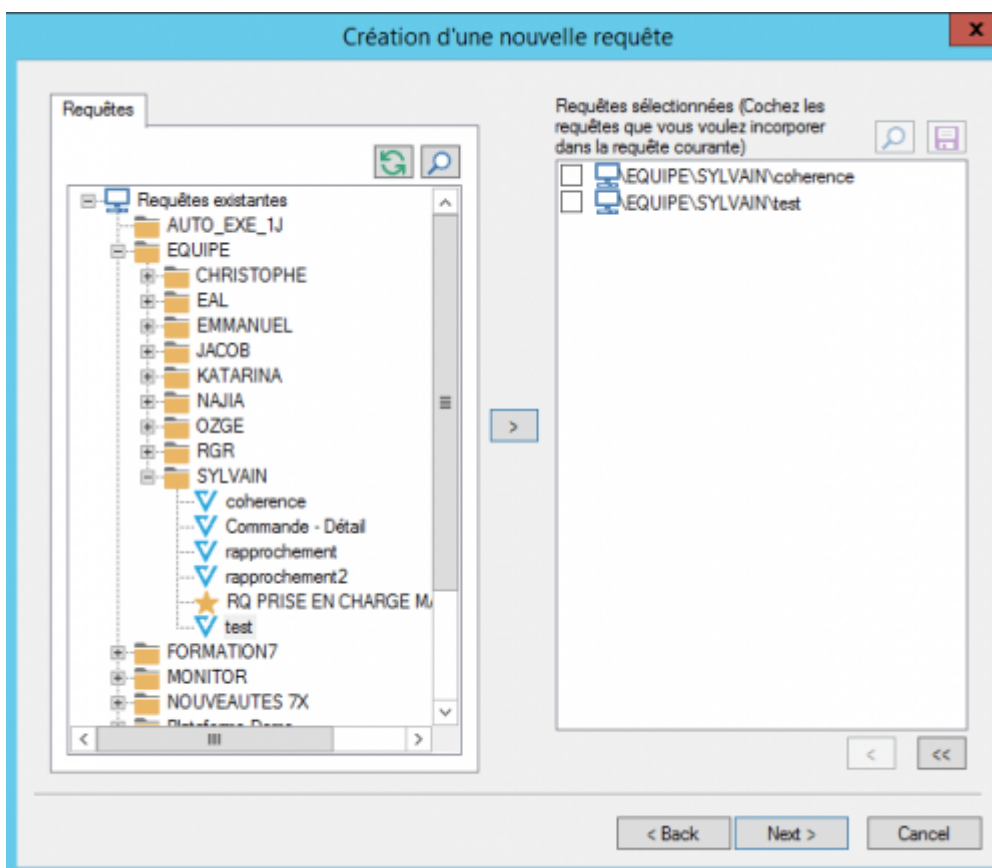
Usage

This type of query is similar to the [SQL UNION](#) function. These queries are used to display the rows extracted by two (or more) subqueries.

Difference from query

Selecting Subqueries

As for the [matching](#), at [\[:en:v8_0_0:designer:menus:accueil:nouvelrequete:choixtables|data source selection](#), no table can be selected, only queries.



All subqueries must use the same data source as the one selected in the union query.



Vigilens checks that the structures of the subqueries are consistent with each other, i.e. :



- they have the same number of fields
- the field types (in the order they appear) are identical

Screens out

The following screens of the [inquiry](#) are absent when creating a UNION :

- [Join screen](#)
- [Criteria screen](#)
- [Appendices screen.](#)
- [Currency decimal screen](#)

From: <https://vigilens.wiki/dokuwiki/> - **Vigilens Reporting Knowledge Garden**

Permanent link: https://vigilens.wiki/dokuwiki/doku.php?id=en:v8_0_0:designer:menus:accueil:nouvellerequete:union&rev=1599749716

Last update: **2020/09/10 16:55**

