

UNION query

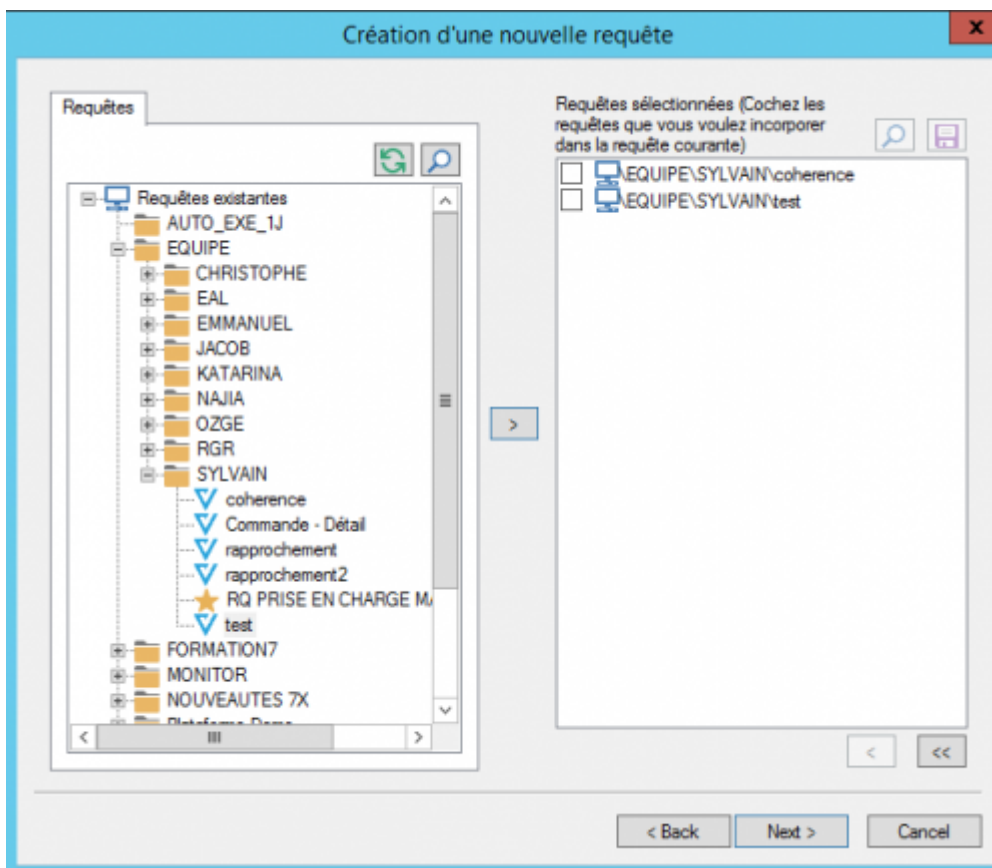
Usage

This type of query is similar to the [SQL UNION](#) function. These queries are used to display the rows extracted by two (or more) subqueries.

Difference from query

Selecting Subqueries

As for the [matching](#), at [\[:en:v8_0_0:designer:menus:accueil:nouvelrequete:choixtables|data source selection](#), no table can be selected, only queries.



Screens out

The following screens of the [inquiry](#) are absent when creating a UNION :

- [Join screen](#)
- [Criteria screen](#)
- [Appendices screen](#).

- [Currency decimal screen](#)

From: <https://vigilens.wiki/dokuwiki/> - **Vigilens Reporting Knowledge Garden**

Permanent link: https://vigilens.wiki/dokuwiki/doku.php?id=en:v8_0_0:designer:menus:accueil:nouvellerequete:union&rev=1599749633

Last update: **2020/09/10 16:53**

