

# Home Menu > New Query



## Focus



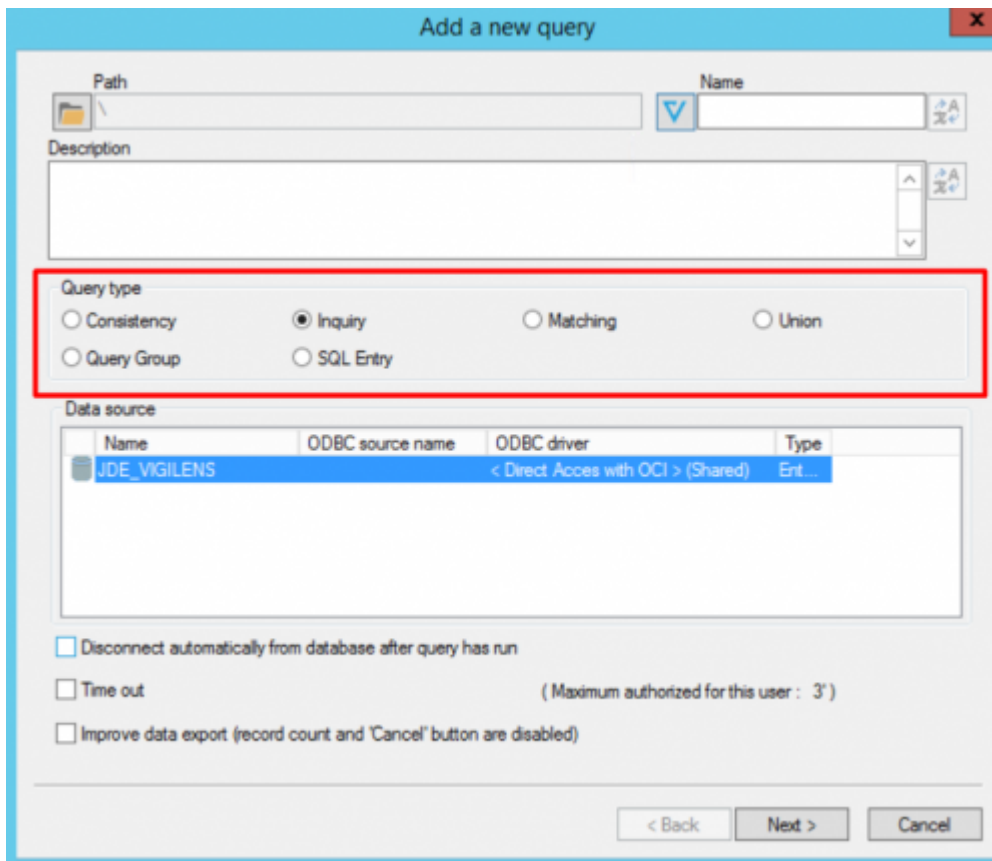
Depending on what is selected in the [panels](#), the behavior of the New request button changes, see [this page](#) for more details.

## Name of the query

The name of the query need not be unique. It just has to be unique in the directory where the query is located. This applies to the user's directory but also the shared query directory. The icon to the left of the name entry field allows you to modify the icon assigned to the query.



## Query Type



## Inquiry

### Restitution of data meeting selection criteria

This is the most common type of request. [See dedicated page](#)

## Consistency

### Restitution of data that doesn't meet business rules

This type of query is appropriate for searching for anomalies. [See dedicated page](#)

## Matching

### Restitution of data resulting from various data sources and meeting selection criteria

[See dedicated page](#)

## Union

### Consolidation of data from other queries or multiple tables

[See dedicated page](#)

## Query Group

### Sequential execution of selected queries

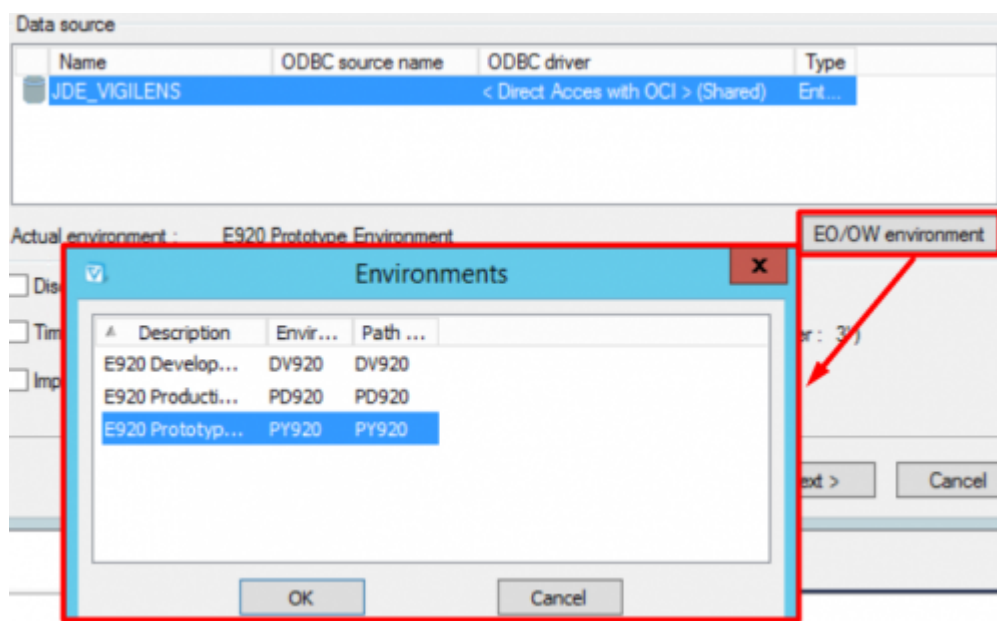
[See dedicated page](#)

## SQL Entry

### Direct SQL syntax entry of a script (**SELECT** only)

[See dedicated page](#)

## Data Source



Choice of data source and JDE/Oneworld environment.

## Other Options

### Automatic disconnect

By default, any database connection remains active until :

- the closing of the application
- a connection to another database

This saves time during, for example, successive executions on the same database.

When this box is checked, the connexion is killed just after the query runs.

## Time out

Allows you to define a specific timeout for the request. This timeout cannot in any case exceed the possible timeout defined for the Vigilens user or the group to which he belongs.



When creating / adjustinG a query, it can be interesting to define, temporarily, a relatively short timeout to facilitate testing.

## Data Recovery Optimization

This option saves some time during the data recovery phase by limiting the dialog box redisplay. However, it does not allow you to monitor the progress of data recovery or cancel it if necessary.

From: <https://vigilens.wiki/dokuwiki/> - **Vigilens Reporting Knowledge Garden**

Permanent link: [https://vigilens.wiki/dokuwiki/doku.php?id=en:v8\\_0\\_0:designer:menus:accueil:nouvellerequete:start&rev=1612191714](https://vigilens.wiki/dokuwiki/doku.php?id=en:v8_0_0:designer:menus:accueil:nouvellerequete:start&rev=1612191714)

Last update: **2021/02/01 16:01**

