

# Home Menu > New Query



## Focus



Depending on what is selected in the [panels](#), the behavior of the New request button changes, see [this page](#) for more details.

## Name of the query

The name of the query need not be unique. It just has to be unique in the directory where the query is located. This applies to the user's directory but also the shared query directory. The icon to the left of the name entry field allows you to modify the icon assigned to the query.



## Query Type



## Inquiry

### Restitution of data meeting selection criteria

This is the most common type of request. [See dedicated page](#)

## Consistency

### Restitution of data that doesn't meet business rules

This type of query is appropriate for searching for anomalies. [See dedicated page](#)

## Reconciliation

### Restitution of data resulting from various data sources and meeting selection criteria

[See dedicated page](#)

## Union

### Consolidation of data from other queries or multiple tables

[See dedicated page](#)

## Group of queries

### Sequential execution of selected queries

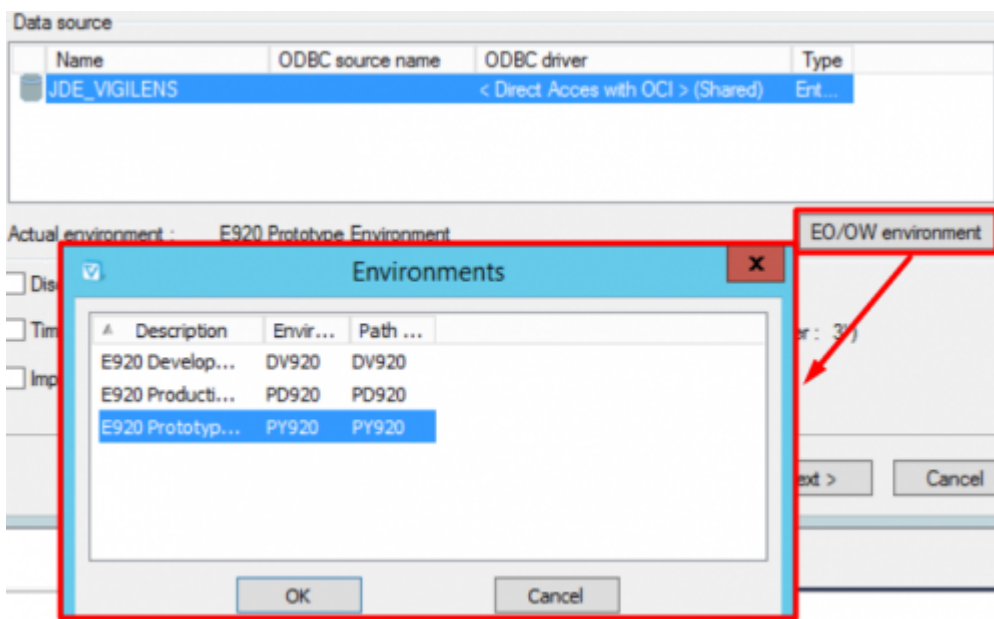
[See dedicated page](#)

## SQL Input

### Direct SQL syntax entry of a script (**SELECT** only)

[See dedicated page](#)

## Data Source



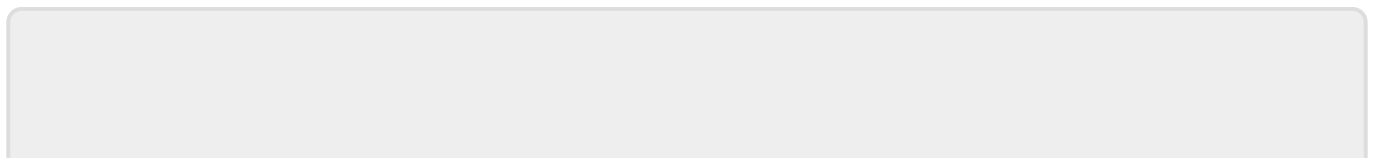
Choice of data source and JDE/Oneworld environment.

## Other Options

### Automatic disconnect

### Time out

### Data Recovery Optimization



From: <https://vigilens.wiki/dokuwiki/> - **Vigilens Reporting Knowledge Garden**

Permanent link: [https://vigilens.wiki/dokuwiki/doku.php?id=en:v8\\_0\\_0:designer:menus:accueil:nouvellerequete:start&rev=1599141191](https://vigilens.wiki/dokuwiki/doku.php?id=en:v8_0_0:designer:menus:accueil:nouvellerequete:start&rev=1599141191)

Last update: **2020/09/03 15:53**

