

Output

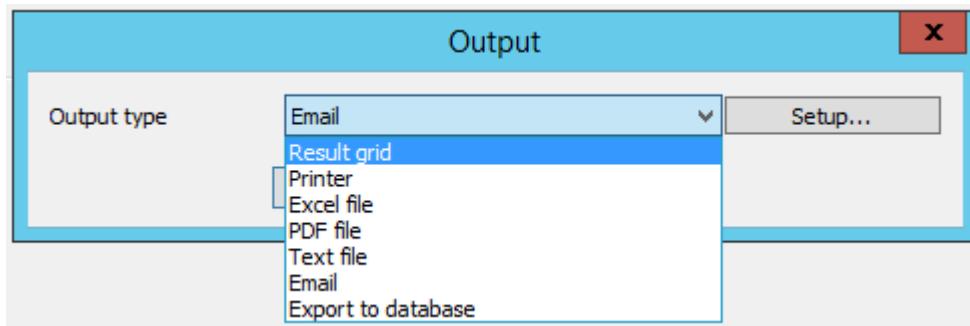
There are two outputs modes :

- Interactive output: user actively run the query
- Batch output: all queries of a directory are run

These two modes are set up separately.

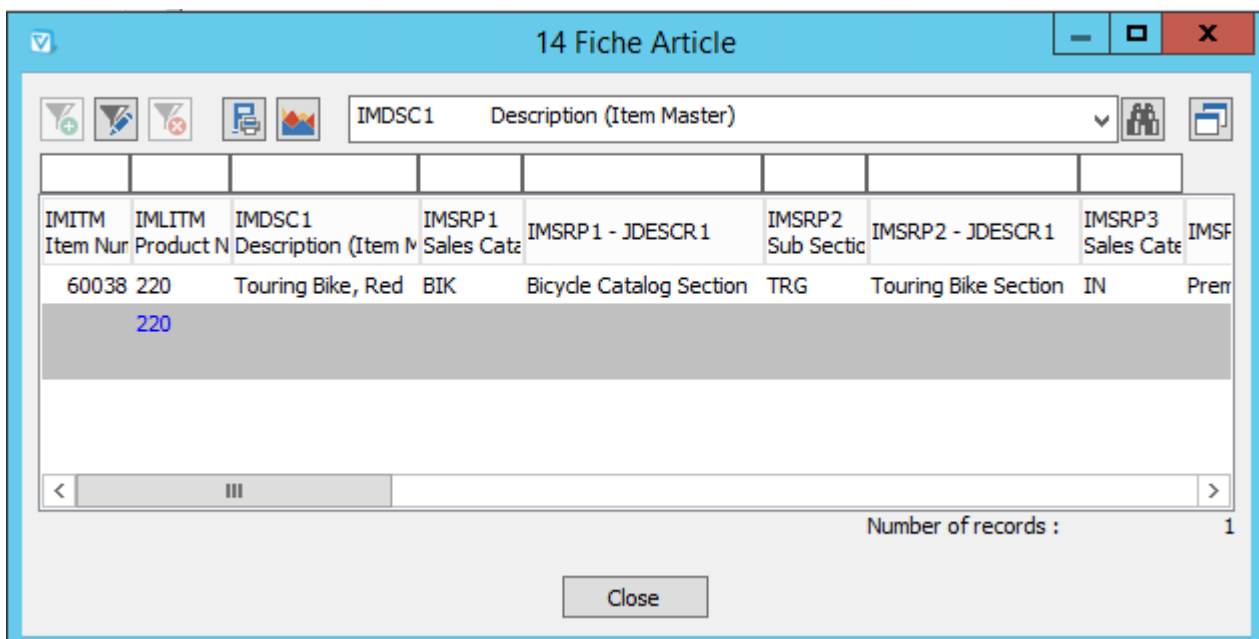
Interactive Output

Output types



Result Grid

Most used output



[see dedicated page](#)

Printer

The image shows two overlapping dialog boxes. The top one is titled 'Output' and has a close button (X) in the top right. It contains a label 'Output type' followed by a dropdown menu showing 'Printer' and a 'Setup...' button. Below this are 'OK' and 'Cancel' buttons. The bottom dialog box is titled 'Print' and also has a close button (X) in the top right. It contains two radio buttons: 'Print result grid' (unselected) and 'Report' (selected). Below the radio buttons is the text 'Use the following report layout :' followed by a dropdown menu showing 'V8' and a '...' button. Underneath is a label 'Printer' followed by a dropdown menu showing 'user default printer'. At the bottom are 'OK' and 'Cancel' buttons.

Excel File

The image shows a single dialog box titled 'Output' with a close button (X) in the top right. It contains a label 'Output type' followed by a dropdown menu showing 'Excel file' and a 'Setup...' button. Below this are 'OK' and 'Cancel' buttons.

Excel file✕

File Type

Excel Workbook 97 - 2003 (*.xls) Excel Workbook 2007 (*.xlsx) *

Excel Macro - Enabled Workbook 2007 (*.xlm) *

* Files are created without using MS Excel application (improves speed)

Define a file:

...

Purge file, if it exists, before downloading fresh data

Model

Choose a model

...

Location

Define a sheet

Define a target cell

Cell range name

Merge with a potential row range that could exist

Apply format set at Vigilens level

After data insert

Macro to launch

Update each field within the file

Add column name **Remarks**

Add field description

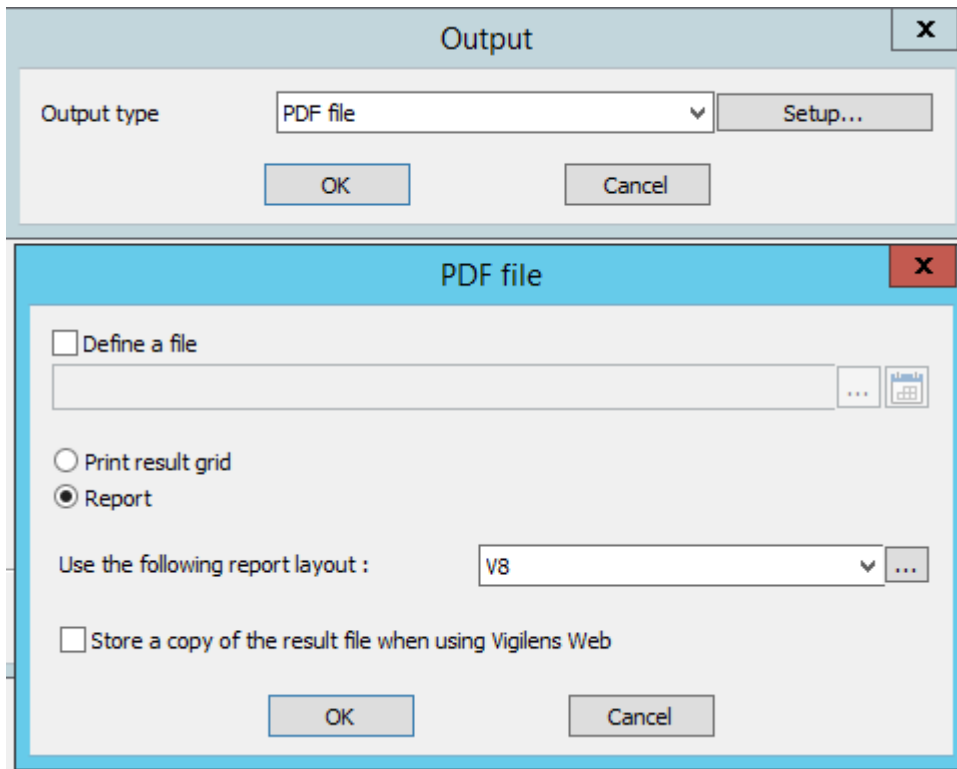
Store a copy of the result file when using Vigilens Web

OKCancel

[See dedicated page.](#)

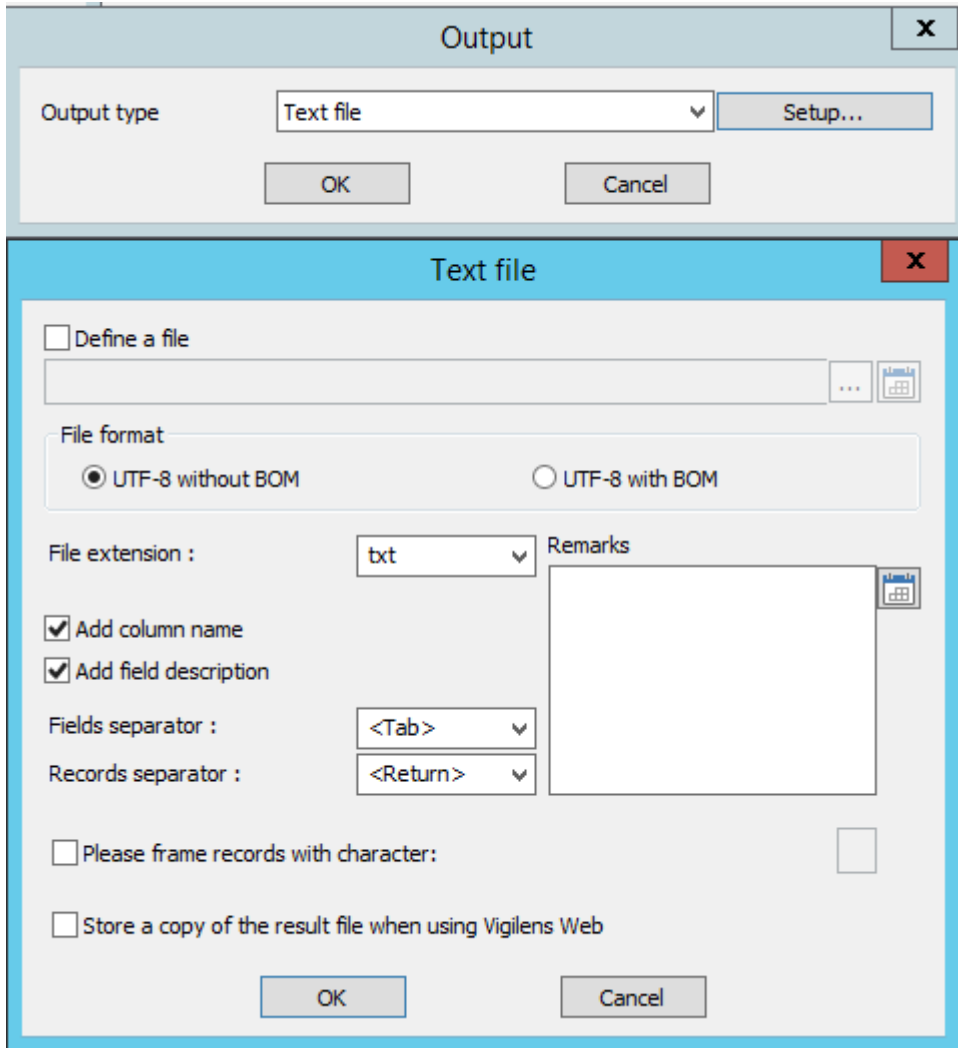
PDF file

Vigilens Reporting Knowledge Garden - <https://vigilens.wiki/dokuwiki/>

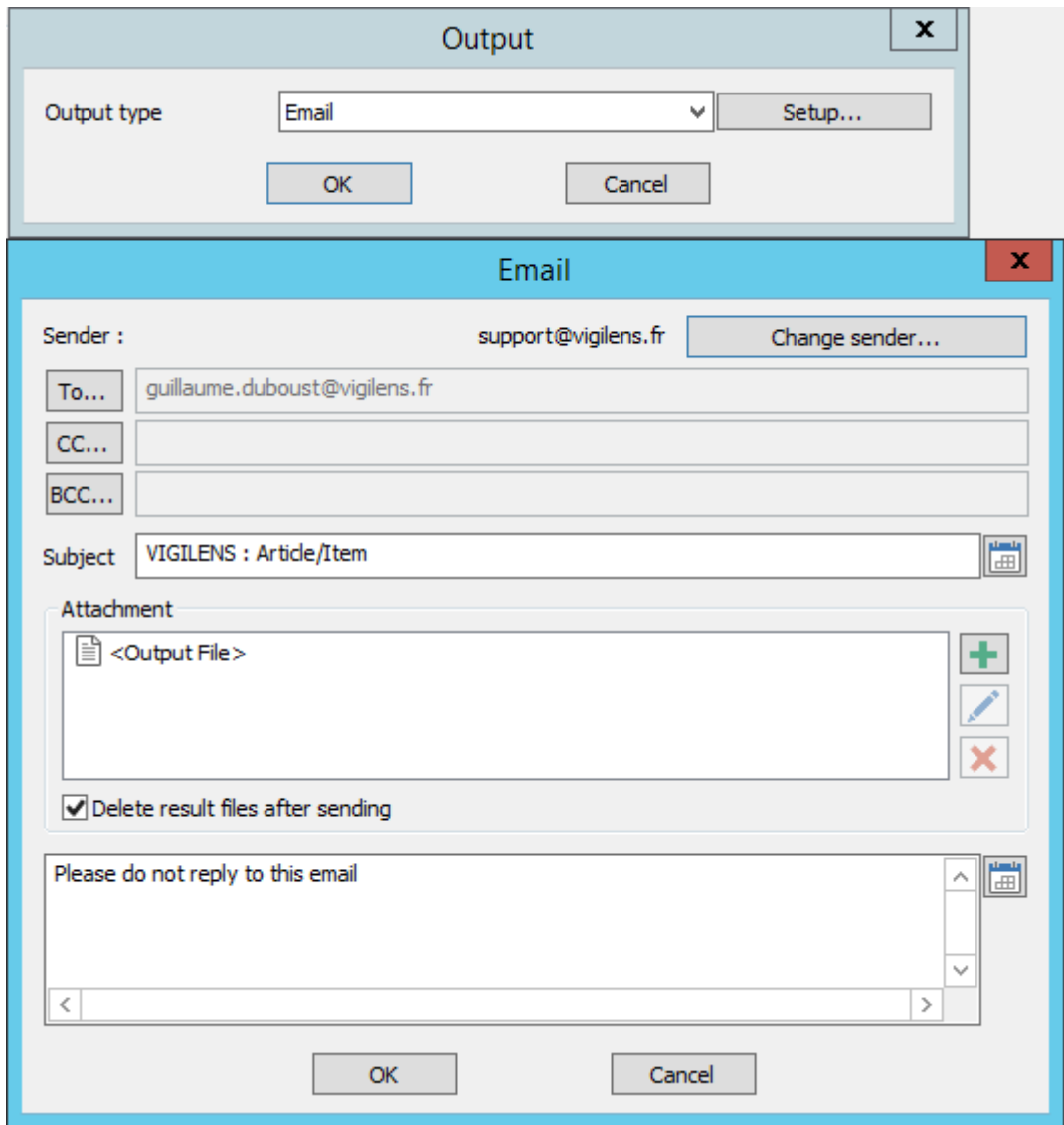


[See dedicated page.](#)

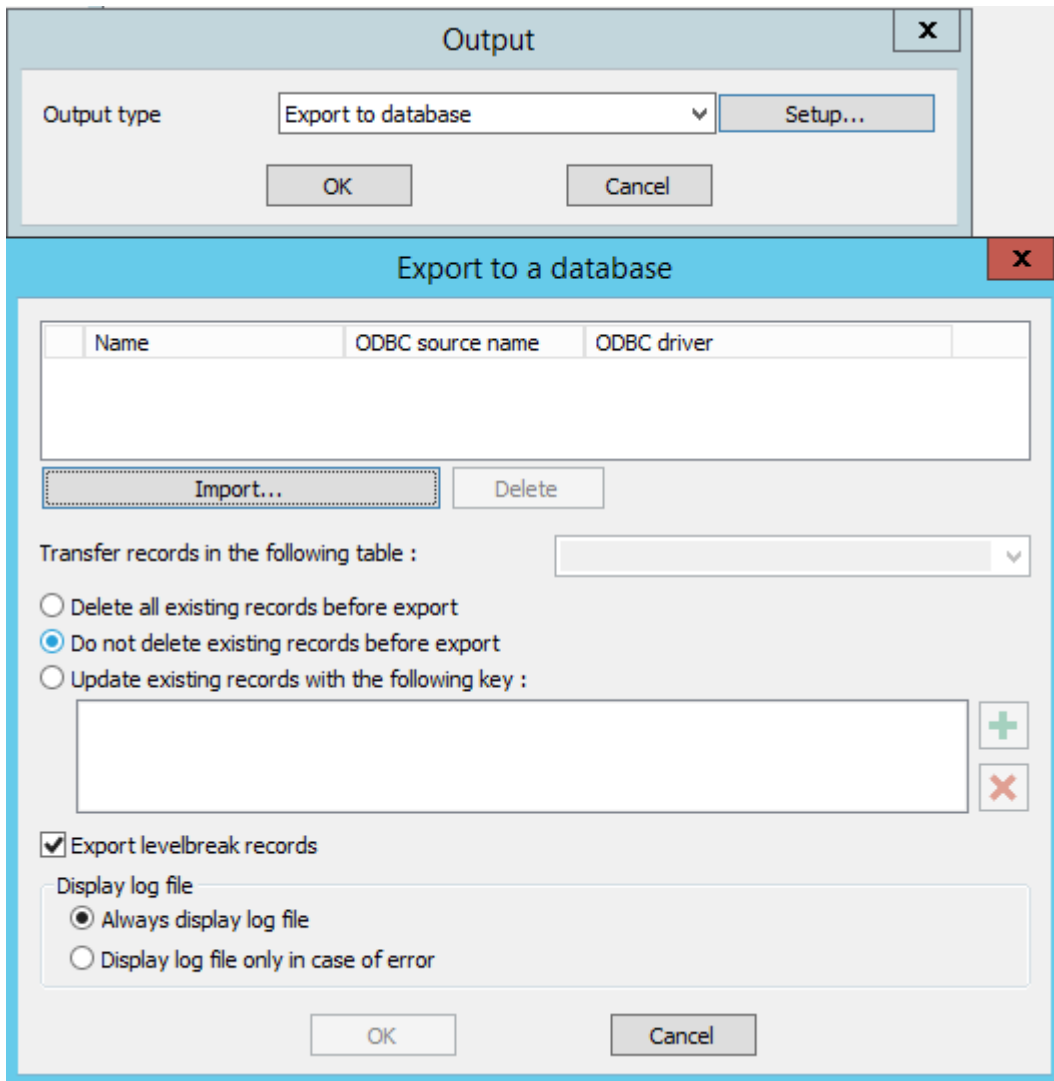
Text File



Email



Export to database

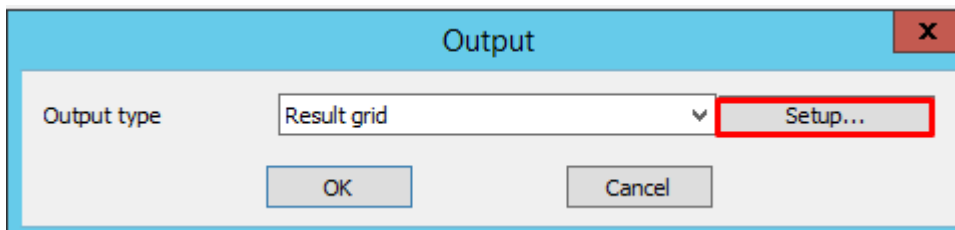


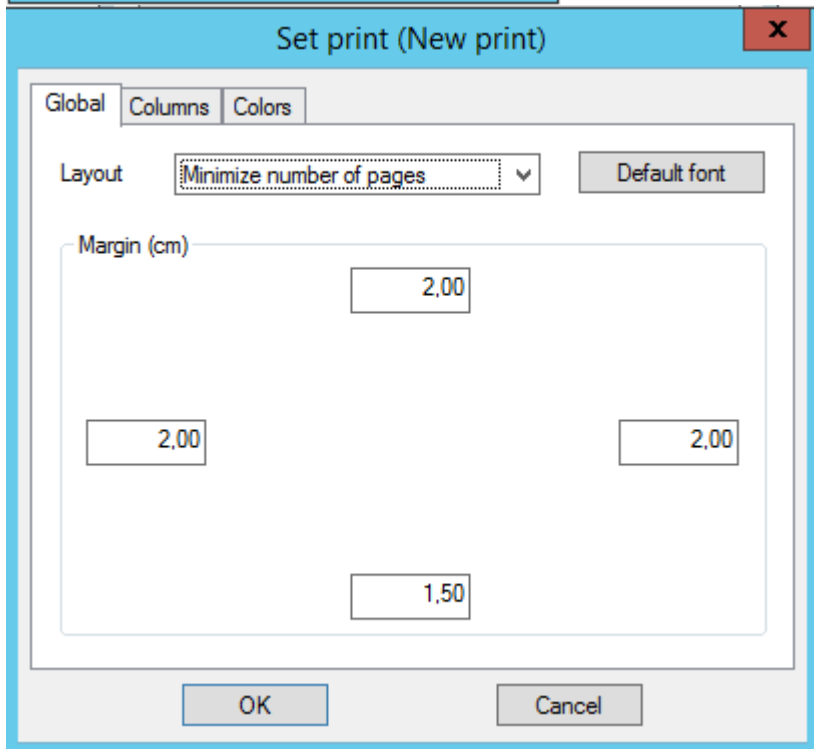
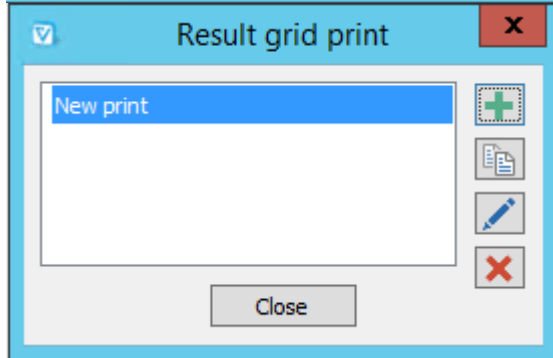
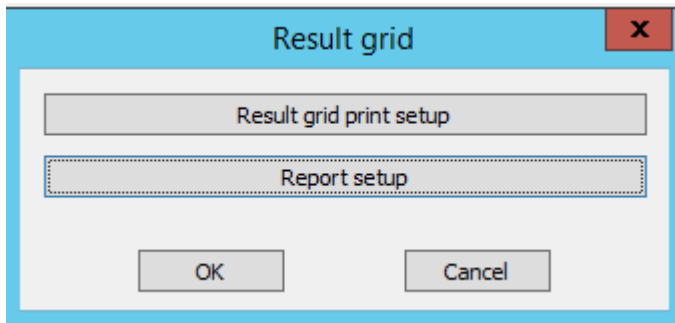
Output layout

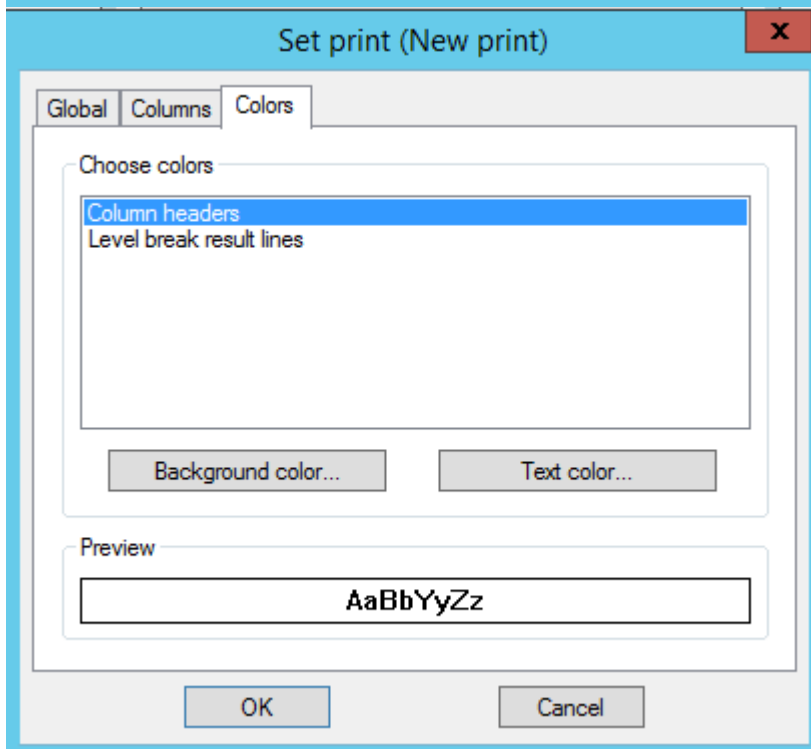
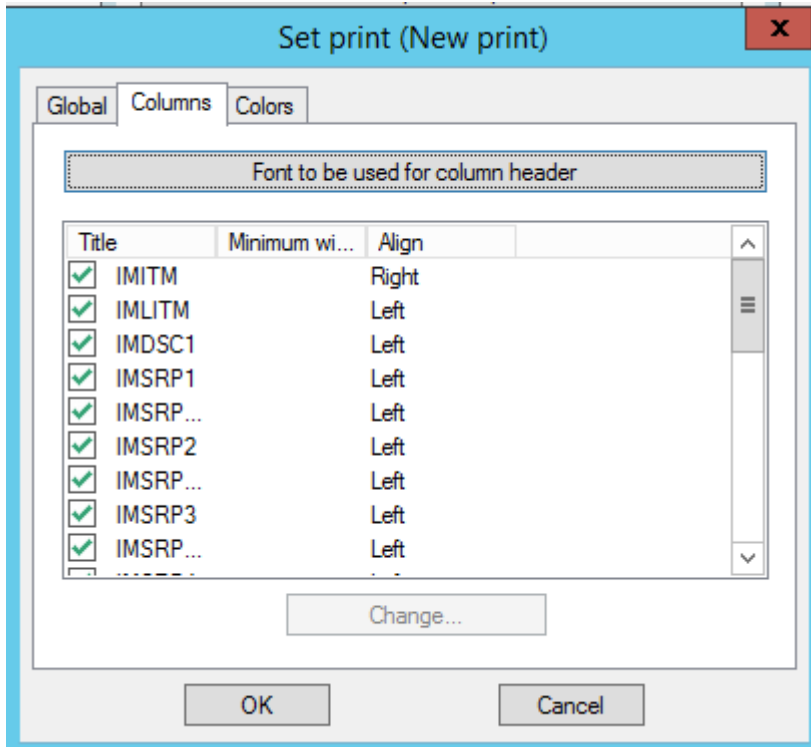
When printing, for example in a PDF, you can choose one of two types of output formats: grid format or report.

Result Grid setup

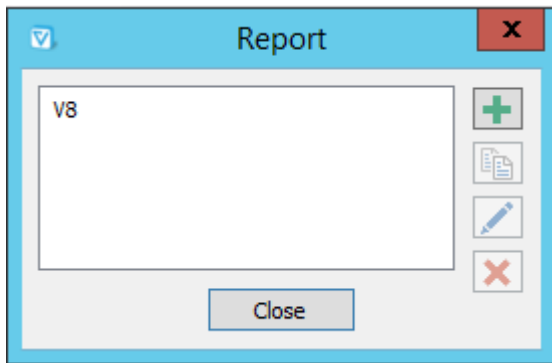
When you choose the [interactive output](#), click on Setup...







Report setup



[See dedicated page](#)

Batch Output

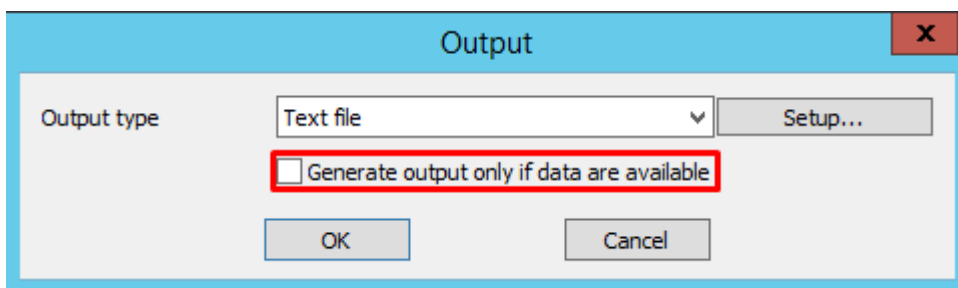
The batch output mode has a separate setting from the interactive mode, but the setting fields are the same.



In batch mode, you can choose not to produce an output if there is no data.

This feature is heavily used in the case of consistency check queries (searching for clients without a G/L key). The scheduled query runs every x minutes looking for the anomaly and for example sends a mail if the result is positive.

[See scheduler page](#)



All output types except grid are available, as well as grid or report output formats.

From: <https://vigilens.wiki/dokuwiki/> - Vigilens Reporting Knowledge Garden

Permanent link: https://vigilens.wiki/dokuwiki/doku.php?id=en:v8_0_0:designer:menus:accueil:nouvellerequete:restitution&rev=1600073812

Last update: 2020/09/14 10:56

