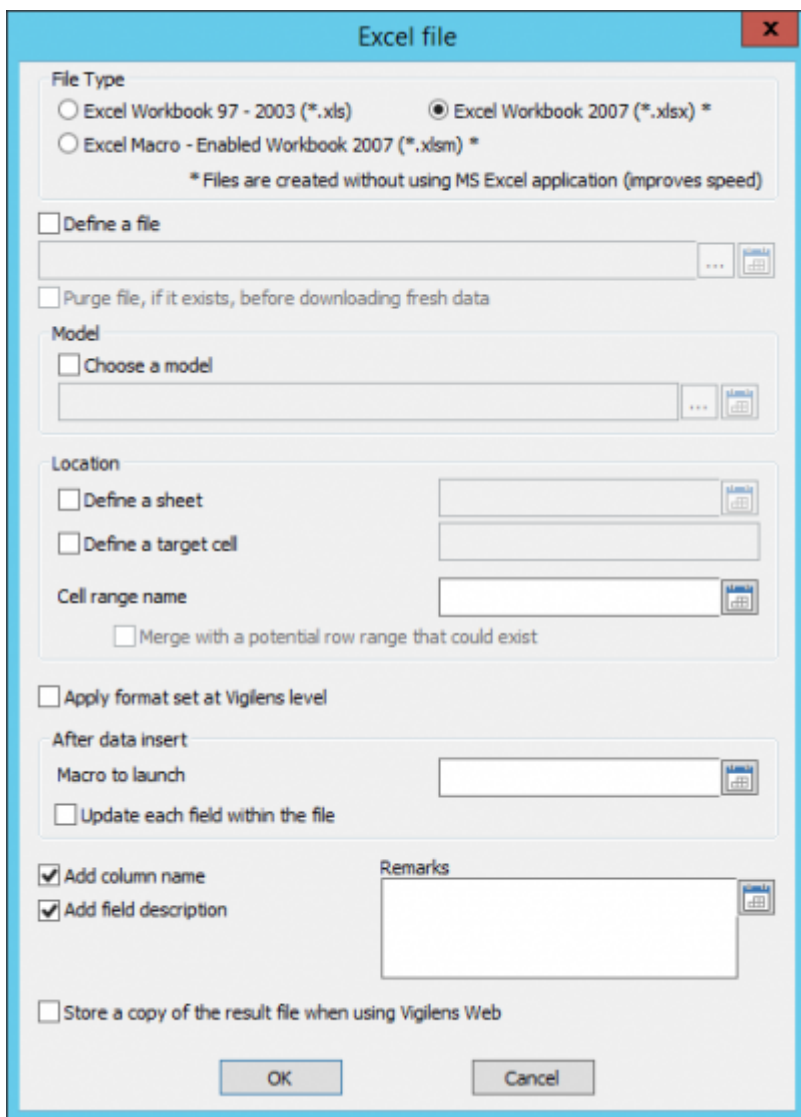


# Excel file

- **File Type:** Excel file type to be used to output the data:
  - Excel Template (\*.xlt, \*.xltx, \*.xltm).
  - Classeur Excel (\*.xls, \*.xlsx, \*.xlsm).
- **Define a file:** define the name of the file and the location where the result of the query will be saved.
- **Model:** the file specified as a template allows you to use Excel to finalize the formatting of the query data (pivot table, graph, conditional formatting etc.) it is advisable to store the template in the shared directory of Vigilens to be sure that it is accessible during the execution of the query (especially in case of Web type execution).
- **Location :** Defines the location where Vigilens will deposit the result of the query (often used with templates to ensure consistency between the result obtained from Vigilens and the formatting done by Excel).
- **Apply format set at Vigilens Level:** Keeps the formatting defined in Vigilens (format, conditional formatting).
- **Macro to launch:** Automatic execution of a macro at the end of editing. For the macro to run, remember to uncheck the box "Remove personal information from file properties when saving" in the Excel options when saving the model.



## Running from Excel by adapting the Macro

Macro example to be completed

## Running from Excel / Calling up external data

The call of a Vigilens query from Excel is done through the menu Data→External Data→From web.



### Mandatory parameters



- Root Adress: `http://<ServeurWeb>/vigilens/table.php?`
- `vglOutput=XLTable&`
- `vglCtrlName=<NomDeLaRequête>&`

- vglUserName=<NomUtilisateur>

[See url syntax howtow](#)



Parameters order does not matter



Il est possible de conserver les mises en forme des champs en cochant la puce **Mise en forme du texte** uniquement dans les options d'import.

Une fois le résultat importé dans Excel, il est possible de rafraîchir les données à tout moment avec le menu **Actualiser**.



## Paramètres supplémentaires



Paramètres de la requêtes Pour chaque paramètre: CodeDuParamètre = ValeurParamètre



Les valeurs numériques restituées utiliseront le premier caractère précisé comme séparateur de décimales, le second précisé comme séparateur de milliers.

From:  
<https://vigilens.wiki/dokuwiki/> - **Vigilens Reporting Knowledge Garden**

Permanent link:  
[https://vigilens.wiki/dokuwiki/doku.php?id=en:v8\\_0\\_0:designer:menus:accueil:nouvellerequete:restitution:excel&rev=1594280876](https://vigilens.wiki/dokuwiki/doku.php?id=en:v8_0_0:designer:menus:accueil:nouvellerequete:restitution:excel&rev=1594280876)

Last update: **2020/07/09 09:47**

