

Matching

Usage

Matching allows you to do what [consultation](#) does not allow: to have in the same query several data sources coming from several databases.

Difference from consultation

Creation Screen

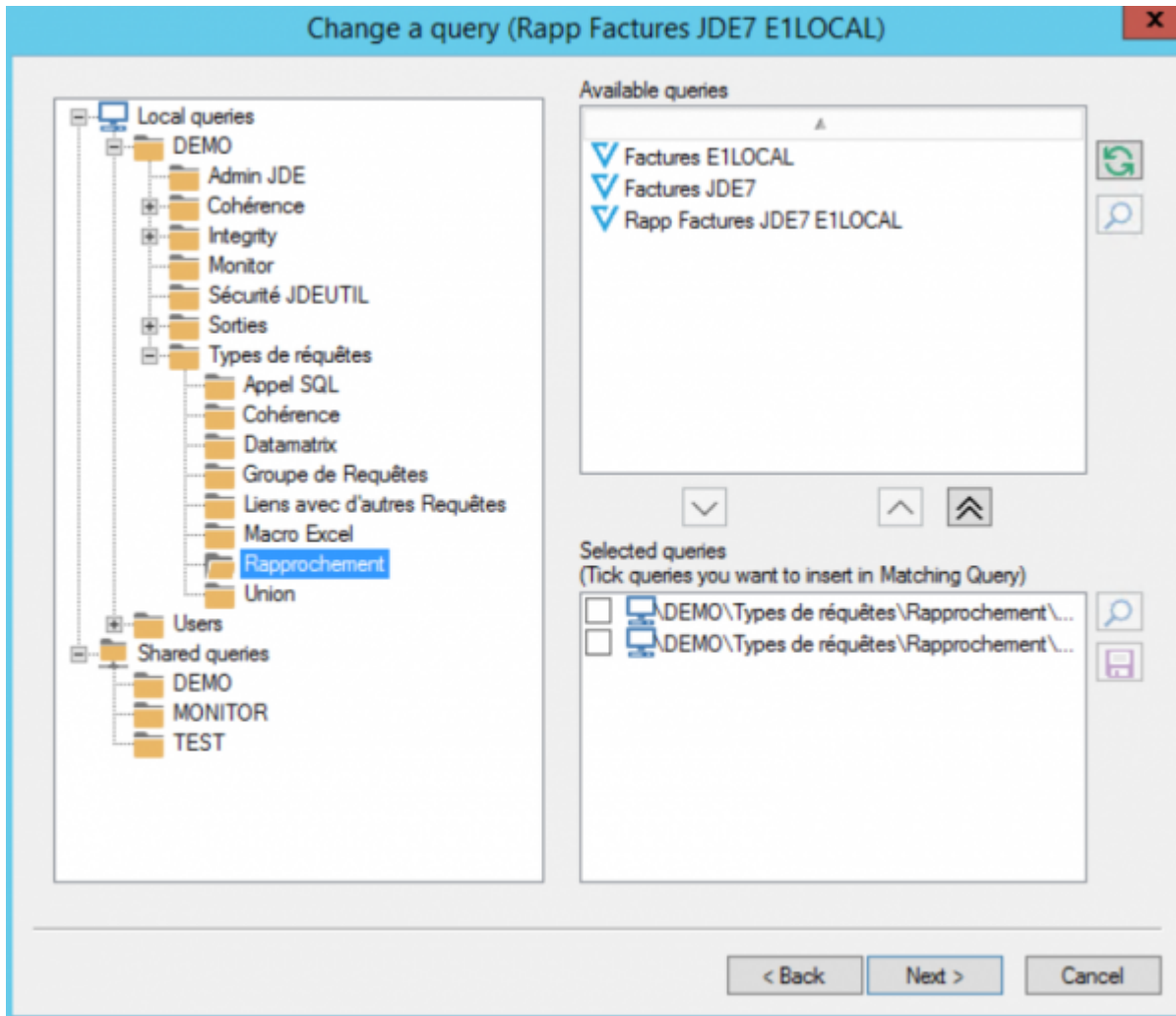
When the matching type is selected, the choice of the data source is grayed out, as well as the checkbox for time out and automatic disconnection.

The screenshot shows a dialog box titled "Change a query (CA par mois)". It contains several fields and options:

- Path:** \DEMO\Monitor
- Name:** CA par mois
- Description:** (Empty text area)
- Query type:** Radio buttons for Consistency, Inquiry (selected), Matching, Union, Query Group, and SQL Entry.
- Data source:** A table with columns Name, ODBC source name, ODBC driver, and Type. The row "JDE_VIGILENS" is selected, with ODBC driver "< Direct Acces with OCI > (Shared)" and Type "Ent...".
- Actual environment:** E920 Development Environment
- EO/OW environment:** (Button)
- Options:** Three checkboxes: "Disconnect automatically from database after query has run", "Time out" (with note "(Maximum authorized for this user : 3')"), and "Improve data export (record count and 'Cancel' button are disabled)".
- Navigation:** "< Back", "Next >", and "Cancel" buttons.

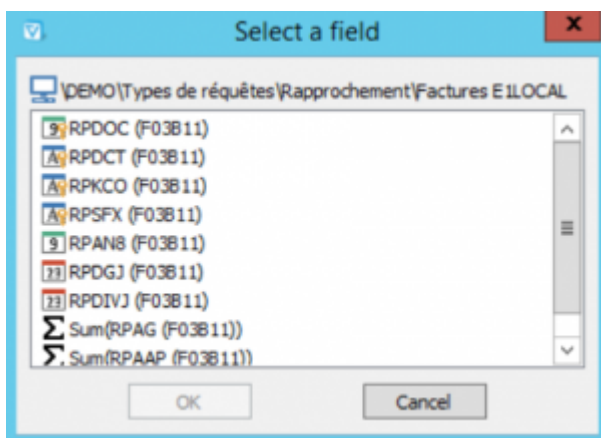
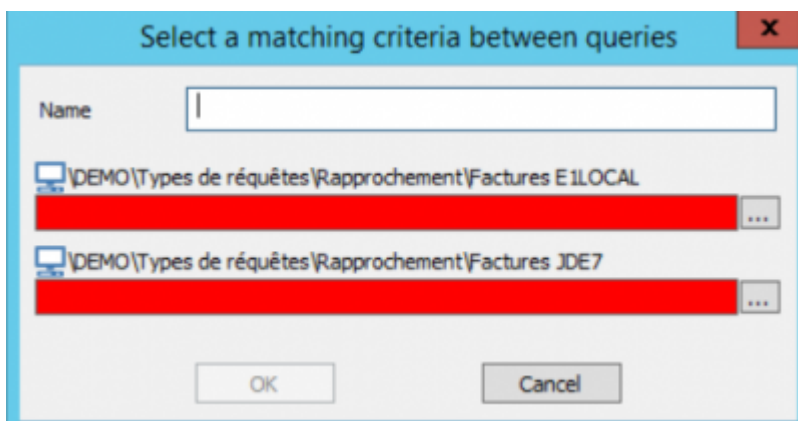
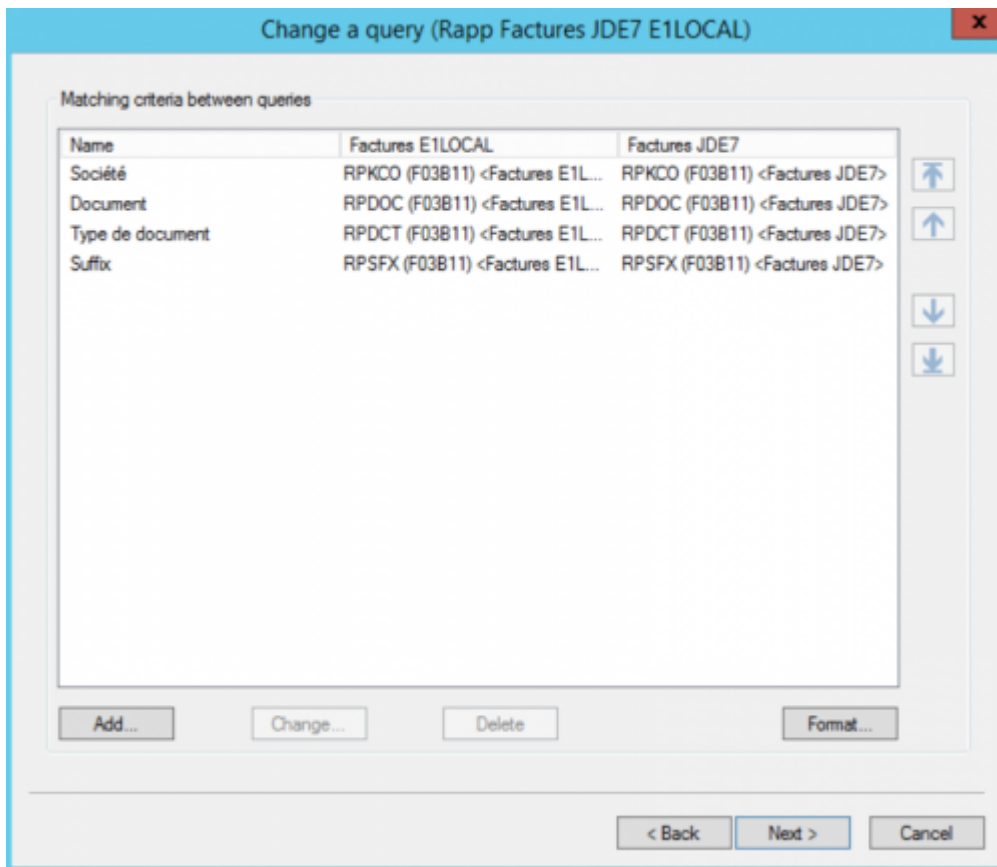
Choice of Queries

At the time of [data source selection](#), no table can be selected, only queries.



Matching Criteria

This is the analog for [the joints screen](#) for a [consultation](#).



Select a matching criteria between queries

Name: KCO

DEMO Types de requêtes/Rapprochement/Factures E ILOCAL
RPKCO (F03B11) <Factures E ILOCAL>

DEMO Types de requêtes/Rapprochement/Factures JDE7
RPKCO (F03B11) <Factures JDE7>

OK Cancel

Création d'une nouvelle requête

Critères de rapprochement entre les différentes requêtes

Nom	coherence	test
KCOO	SHKCOO (F4201) <coherence>	SHKCOO (F4201) <test>
DOCO	SHDOCO (F4201) <coherence>	SHDOCO (F4201) <test>
DCTO	SHDCTO (F4201) <coherence>	SHDCTO (F4201) <test>
LNID	SDLNID (F4211) <coherence>	SDLNID (F4211) <test>

Ajouter... Modifier... Supprimer Format...

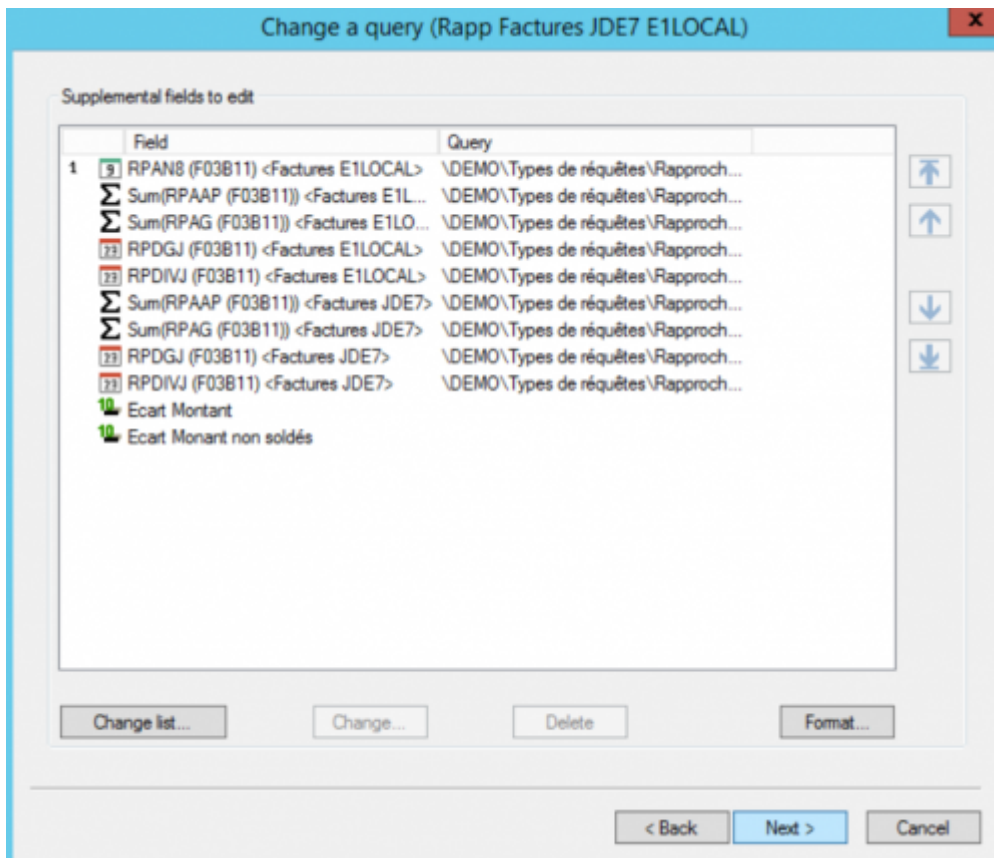
< Back Next > Cancel



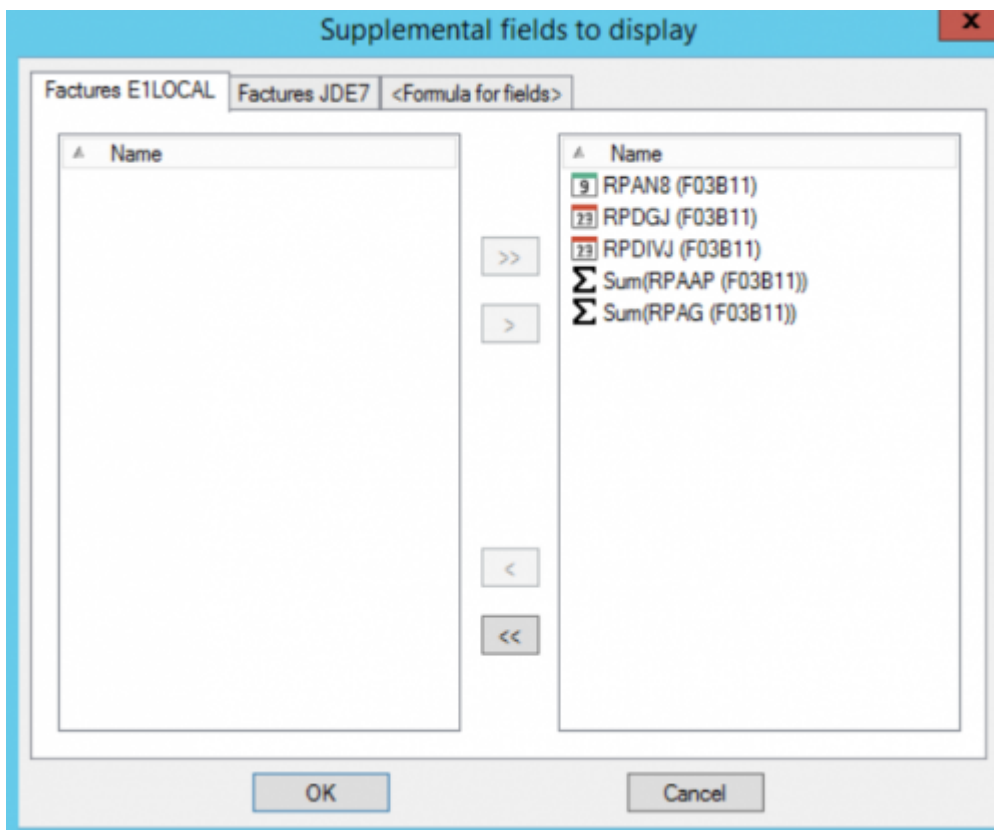
Only "=" joints are possible.

Field Selection

Here again, the screen differs from the [consultation](#) (see [field selection](#)).



- We can't sort the records.
- The fields used in the matching criteria are obligatorily displayed in the final report, so this screen only offers the **additional** fields.



The rest of the screen is similar.

Screens not present

The following screens of the [consultation](#) are absent when creating a matching :

- [appendix screen](#)
- [Currency decimal screen](#)

From: <https://vigilens.wiki/dokuwiki/> - **Vigilens Reporting Knowledge Garden**

Permanent link: https://vigilens.wiki/dokuwiki/doku.php?id=en:v8_0_0:designer:menus:accueil:nouvellerequete:rapprochement&rev=1599141249

Last update: **2020/09/03 15:54**

