

# Reconciliation

## Usage

Reconciliation allows you to do what [consultation](#) does not allow: to have in the same query several data sources coming from several databases.

## Difference from consultation

### Creation Screen

When the reconciliation type is selected, the choice of the data source is grayed out, as well as the checkbox for time out and automatic disconnection.

Change a query (CA par mois)

Path: \DEMO\Monitor      Name: CA par mois

Description:

Query type:

- Consistency
- Inquiry
- Matching
- Union
- Query Group
- SQL Entry

Data source:

Name	ODBC source name	ODBC driver	Type
JDE_VIGILENS		< Direct Acces with OCI > (Shared)	Ent...

Actual environment : E920 Development Environment      EO/OW environment

Disconnect automatically from database after query has run

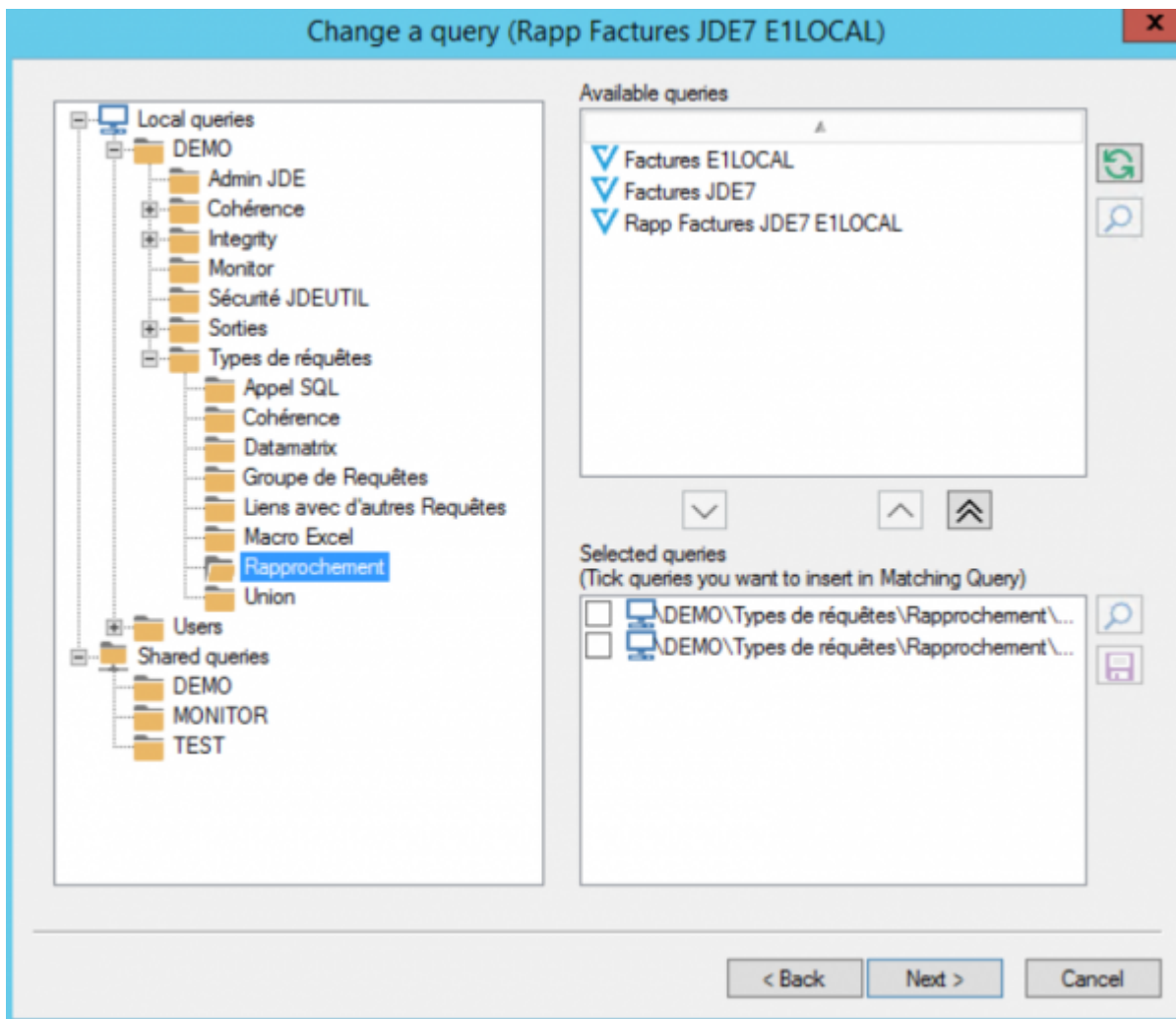
Time out (Maximum authorized for this user : 3')

Improve data export (record count and 'Cancel' button are disabled)

< Back      Next >      Cancel

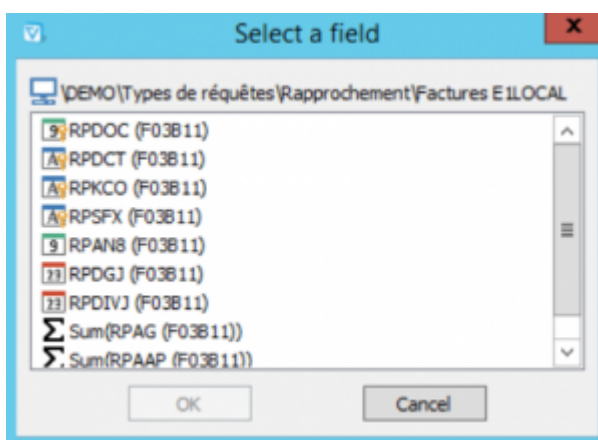
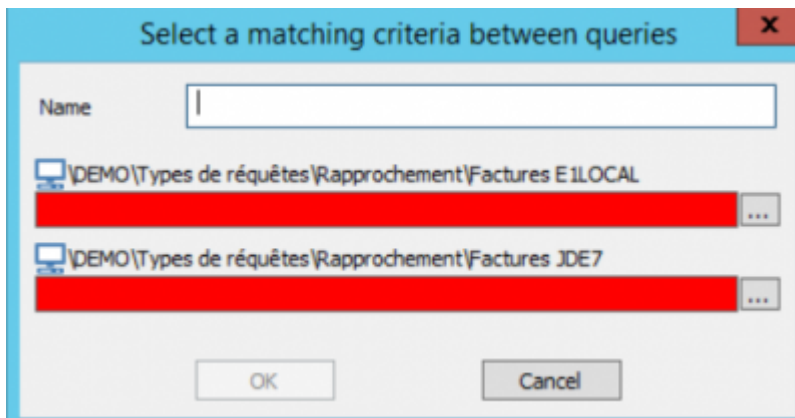
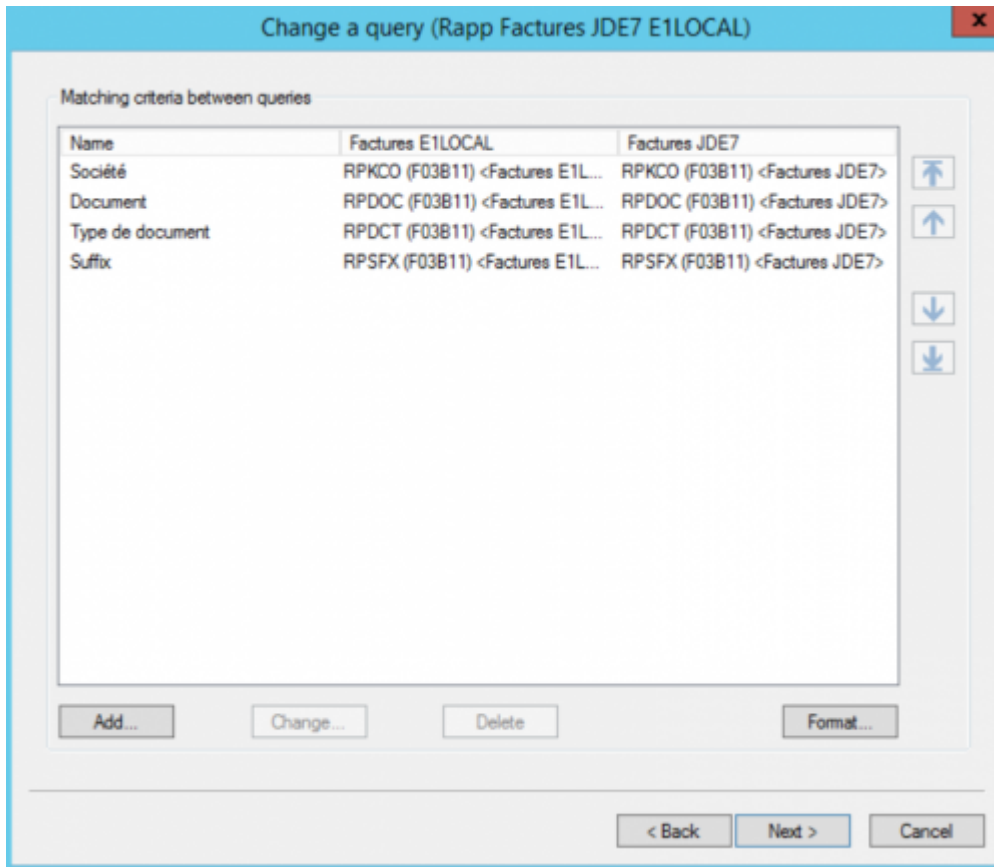
### Choice of Queries

At the time of [data source selection](#), no table can be selected, only queries.



## Reconciliation Criteria

This is the analog for [the joints screen](#) for a [consultation](#).



The dialog box has a title bar with a close button. It contains a text input field with 'KCO' entered. Below it are two list items, each with a small icon and a text field containing 'RPKCO (F03B11) <Factures E ILOCAL>' and 'RPKCO (F03B11) <Factures JDE7>' respectively. At the bottom are 'OK' and 'Cancel' buttons.

The dialog box has a title bar with a close button. It contains a table with the following data:

Critères de rapprochement entre les différentes requêtes		
Nom	coherence	test
KCOO	SHKCOO (F4201) <coherence>	SHKCOO (F4201) <test>
DOCO	SHDOCO (F4201) <coherence>	SHDOCO (F4201) <test>
DCTO	SHDCTO (F4201) <coherence>	SHDCTO (F4201) <test>
LNID	SDLNID (F4211) <coherence>	SDLNID (F4211) <test>

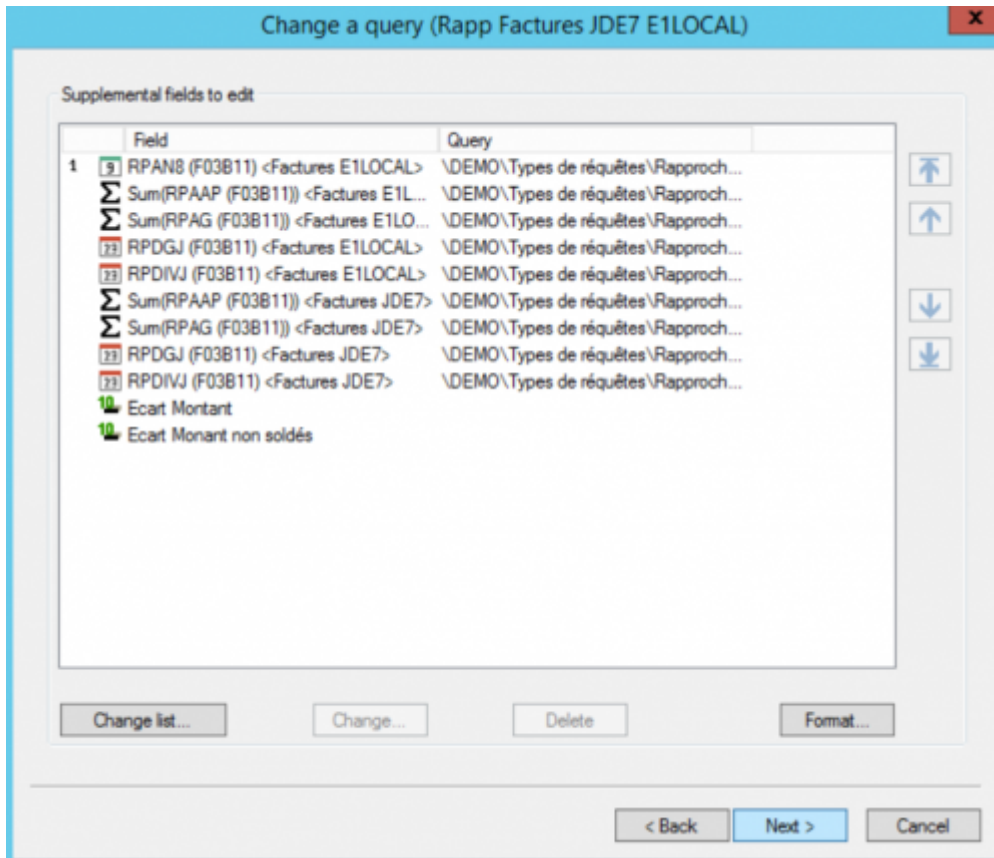
Navigation arrows are on the right side of the table. At the bottom are buttons: 'Ajouter...', 'Modifier...', 'Supprimer', 'Format...', '< Back', 'Next >', and 'Cancel'.



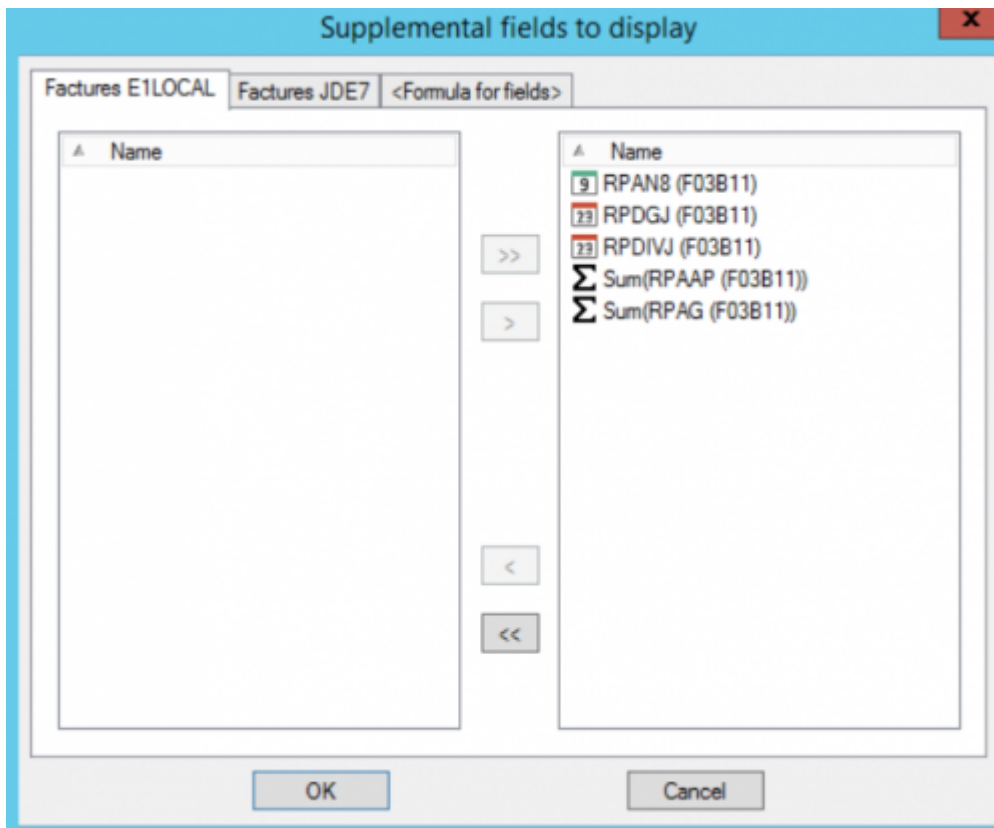
Only "=" joints are possible.

## Field Selection

Here again, the screen differs from the [consultation](#) (see [field selection](#)).



- We can't sort the records.
- The fields used in the reconciliation criteria are obligatorily displayed in the final report, so this screen only offers the **additional** fields.



The rest of the screen is similar.

## Screens not present

The following screens of the [consultation](#) are absent when creating a reconciliation :

- [appendix screen](#)
- [Currency decimal screen](#)

From: <https://vigilens.wiki/dokuwiki/> - **Vigilens Reporting Knowledge Garden**

Permanent link: [https://vigilens.wiki/dokuwiki/doku.php?id=en:v8\\_0\\_0:designer:menus:accueil:nouvellerequete:rapprochement&rev=1594215077](https://vigilens.wiki/dokuwiki/doku.php?id=en:v8_0_0:designer:menus:accueil:nouvellerequete:rapprochement&rev=1594215077)

Last update: **2020/07/08 15:31**

