

Reconciliation

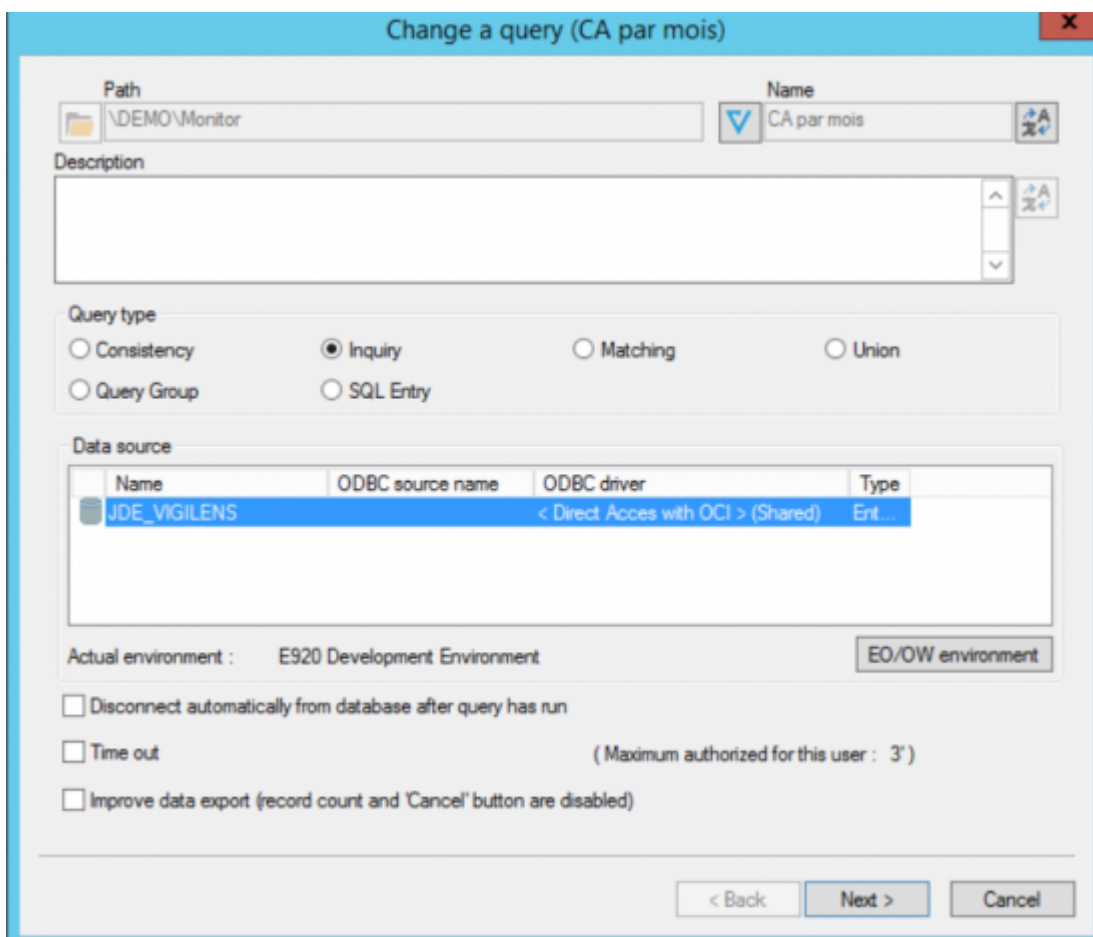
Usage

Reconciliation allows you to do what [consultation](#) does not allow: to have in the same query several data sources coming from several databases.

Difference from consultation

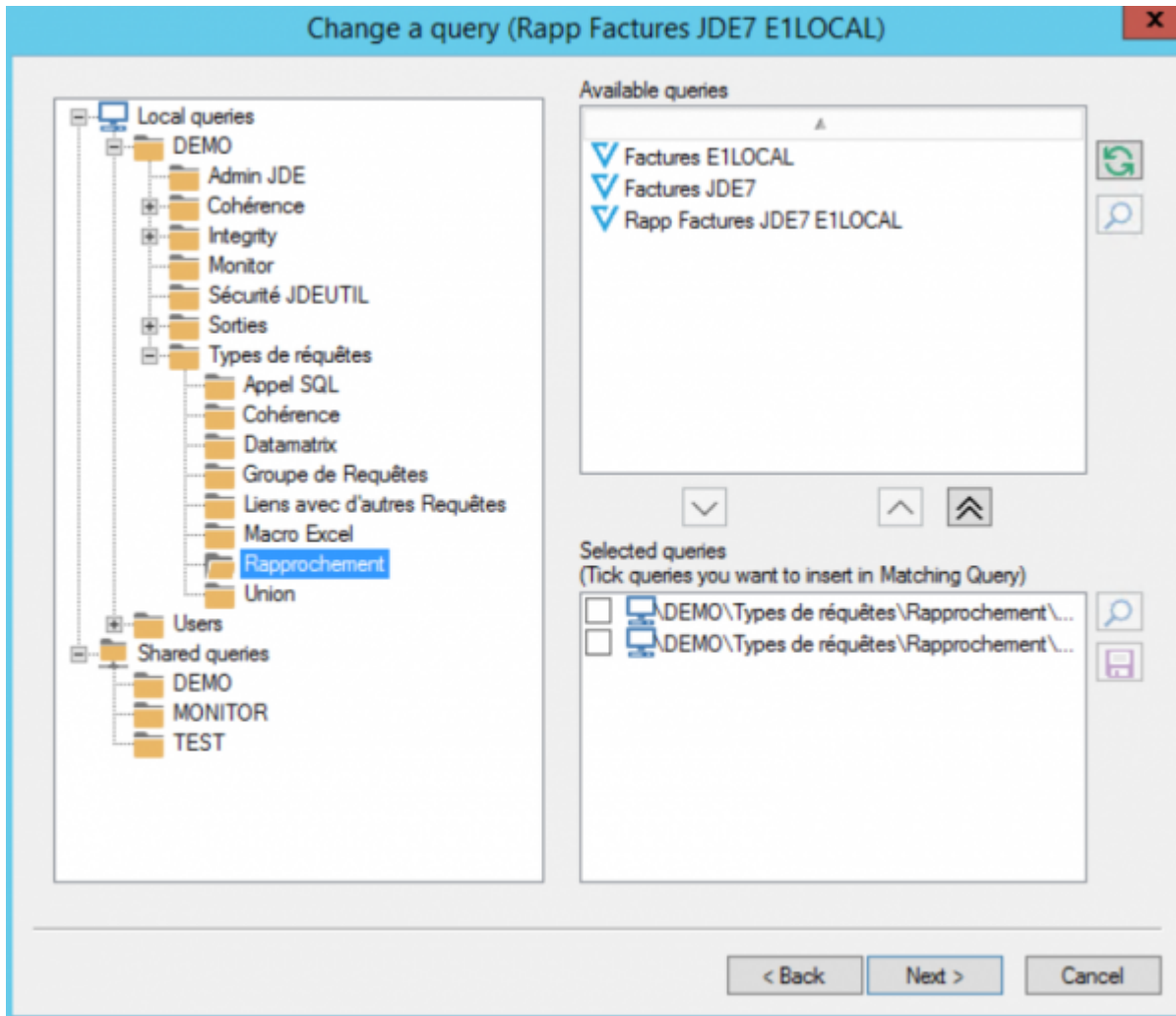
Creation Screen

When the reconciliation type is selected, the choice of the data source is grayed out, as well as the checkbox for time out and automatic disconnection.



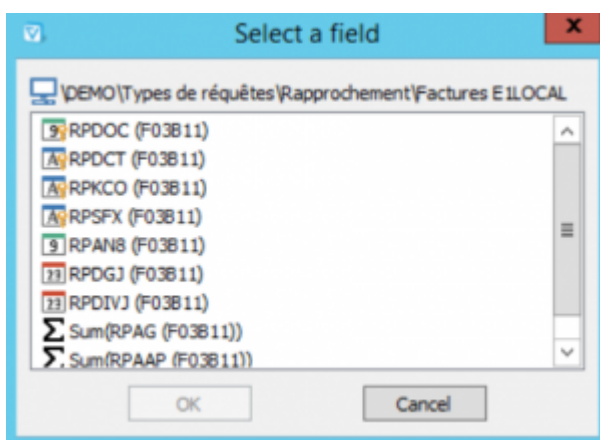
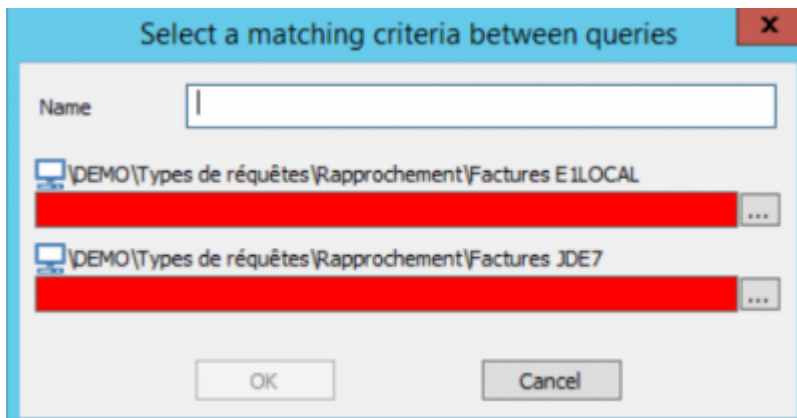
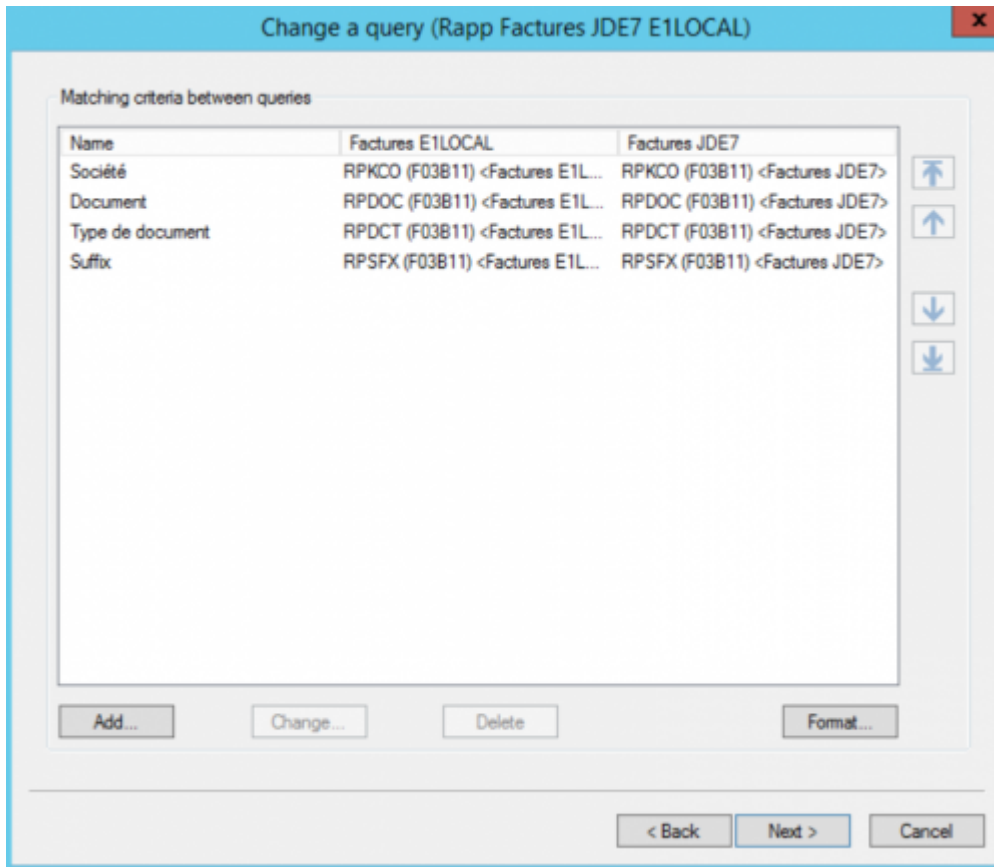
Choice of Queries

At the time of [data source selection](#), no table can be selected, only queries.



Reconciliation Criteria

This is the analog for [the joints screen](#) for a [consultation](#).



The dialog box has a title bar with a close button. It contains a text input field with 'KCO' entered. Below it are two list items, each with a small icon and a text field containing 'RPKCO (F03B11) <Factures E ILOCAL>' and 'RPKCO (F03B11) <Factures JDE7>' respectively. At the bottom are 'OK' and 'Cancel' buttons.

The dialog box has a title bar with a close button. It contains a table with the following data:

Critères de rapprochement entre les différentes requêtes		
Nom	coherence	test
KCOO	SHKCOO (F4201) <coherence>	SHKCOO (F4201) <test>
DOCO	SHDOCO (F4201) <coherence>	SHDOCO (F4201) <test>
DCTO	SHDCTO (F4201) <coherence>	SHDCTO (F4201) <test>
LNID	SDLNID (F4211) <coherence>	SDLNID (F4211) <test>

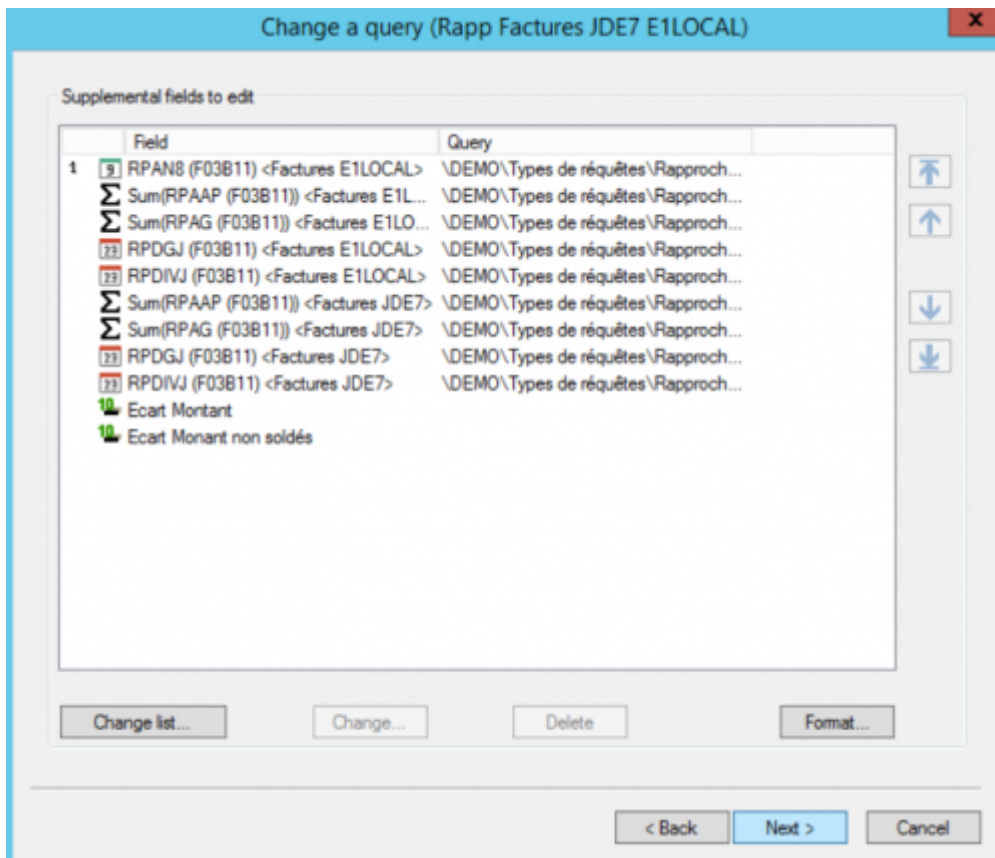
Navigation arrows are on the right side of the table. At the bottom are buttons: 'Ajouter...', 'Modifier...', 'Supprimer', 'Format...', '< Back', 'Next >', and 'Cancel'.



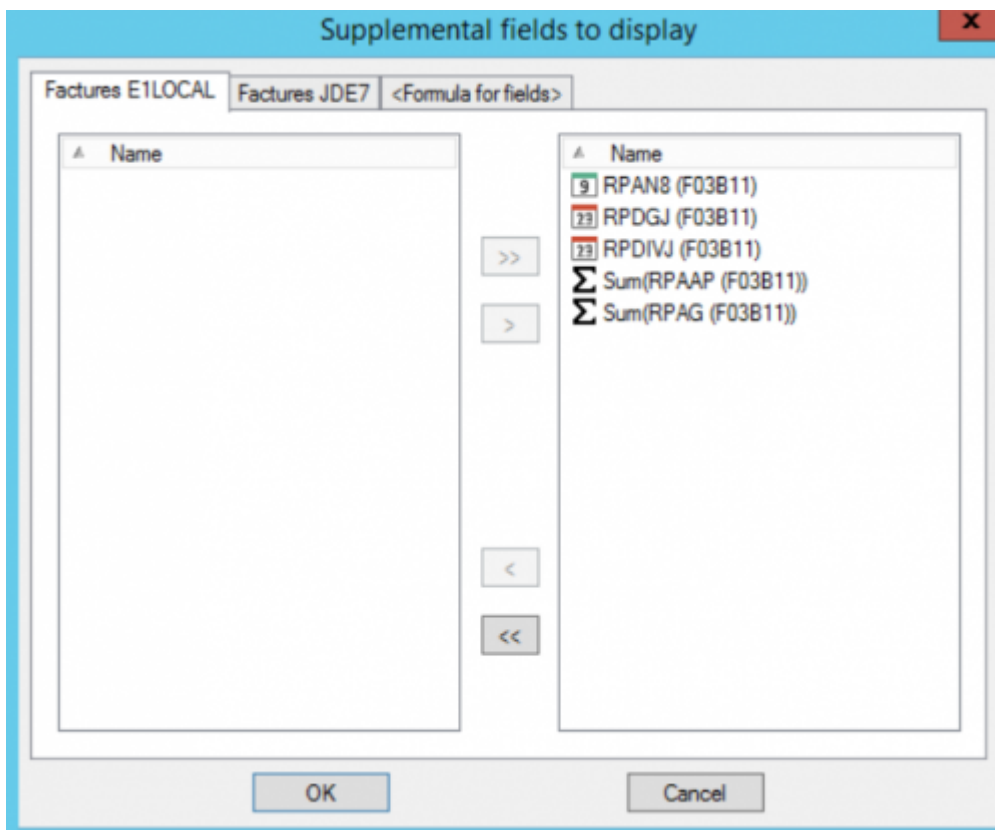
Only "=" joints are possible.

Field Selection

Here again, the screen differs from the [consultation](#) (see [field selection](#)).



- We can't sort the records.
- The fields used in the reconciliation criteria are obligatorily displayed in the final report, so this screen only offers the **additional** fields.



The rest of the screen is similar.

Screens not present

The following screens of the [consultation](#) are absent when creating a reconciliation :

- [appendix screen](#)
- [Currency decimal screen](#)

From: <https://vigilens.wiki/dokuwiki/> - **Vigilens Reporting Knowledge Garden**

Permanent link: https://vigilens.wiki/dokuwiki/doku.php?id=en:v8_0_0:designer:menus:accueil:nouvelerequete:rapprochement&rev=1594214597

Last update: **2020/07/08 15:23**

