

# Reconciliation

## Usage

Reconciliation allows you to do what [consultation](#) does not allow: to have in the same query several data sources coming from several databases.

## Difference from consultation

### Creation Screen

When the reconciliation type is selected, the choice of the data source is grayed out, as well as the checkbox for time out and automatic disconnection.

**Modification d'une requête existante (Rapp Factures JDE7 E1LOCAL)**

Chemin: \DEMO\Types de requêtes\Rapprochement

Nom: Rapp Factures JDE7 E1LOCAL

Description:

Type de requête:

- Cohérence
- Consultation
- Rapprochement
- Union
- Groupe de requêtes
- Saisie SQL

Source de données utilisée:

Nom	Nom source ODBC	Pilote ODBC	Type
JDE_VIGILENS		< Accès direct via OCI > (Shared)	Ent...

Déconnexion automatique de la base de données après exécution de la requête

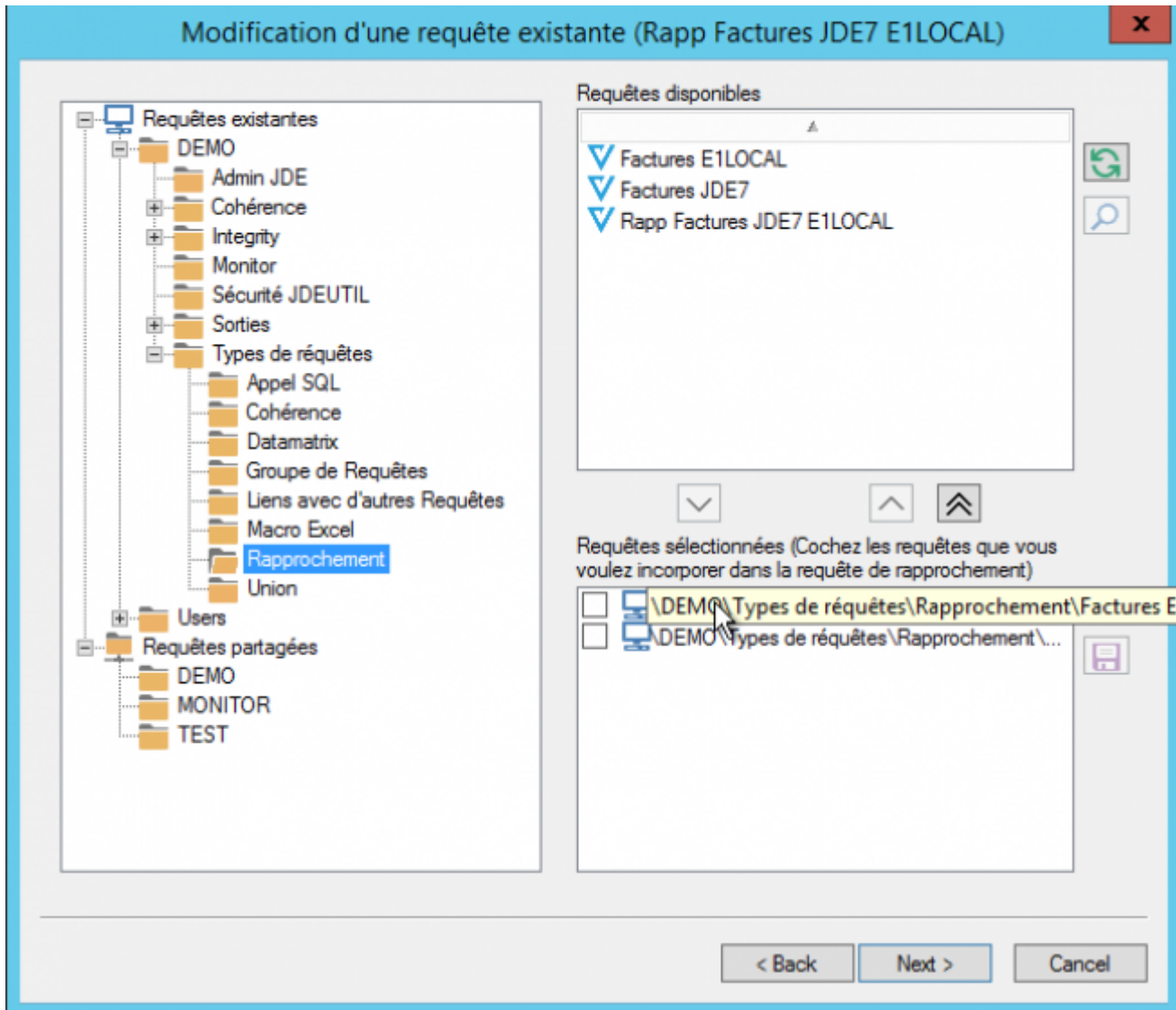
Time out (Maximum autorisé pour cet utilisateur : 3')

Optimiser la récupération des données (désactive le compteur d'enregistrements et le bouton Annuler)

< Back   Next >   Cancel

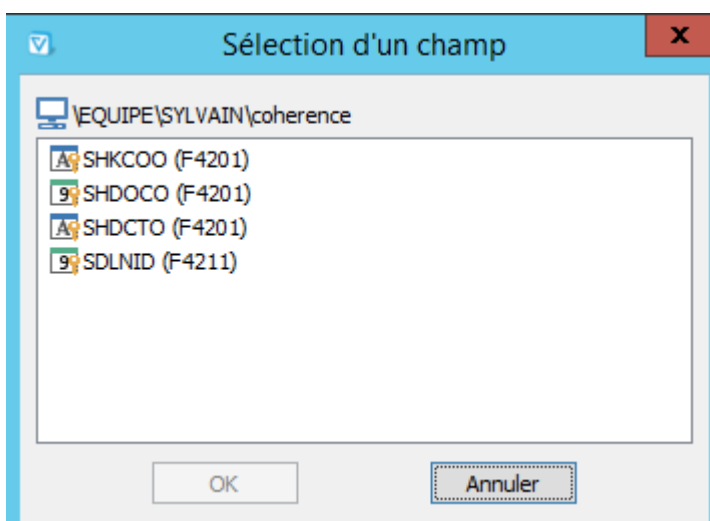
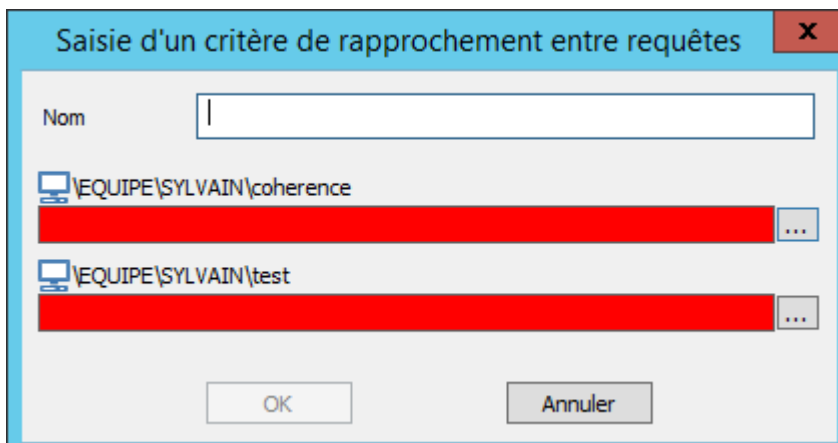
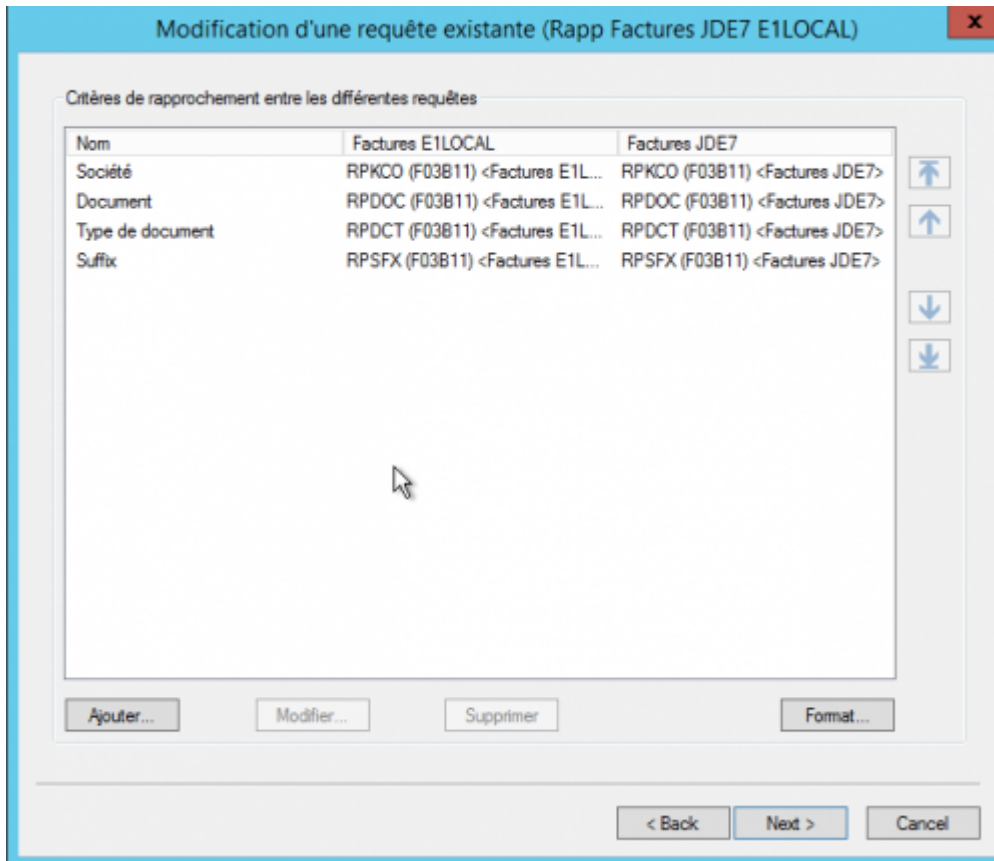
### Choice of Queries

At the time of [sélection des sources de données](#), no table can be selected, only queries.




## Reconciliation Criteria


This is the analog for [l'écran de jointures](#) for a [consultation](#).



**Saisie d'un critère de rapprochement entre requêtes** [X]

Nom:

 \EQUIPE\SYLVAIN\coherence  
SHKCOO (F4201) <coherence> [...]

 \EQUIPE\SYLVAIN\test  
SHKCOO (F4201) <test> [...]

[OK] [Annuler]

**Création d'une nouvelle requête** [X]

Critères de rapprochement entre les différentes requêtes

Nom	coherence	test
KCOO	SHKCOO (F4201) <coherence>	SHKCOO (F4201) <test>
DOCO	SHDOCO (F4201) <coherence>	SHDOCO (F4201) <test>
DCTO	SHDCTO (F4201) <coherence>	SHDCTO (F4201) <test>
LNID	SDLNID (F4211) <coherence>	SDLNID (F4211) <test>

[Ajouter...] [Modifier...] [Supprimer] [Format...]

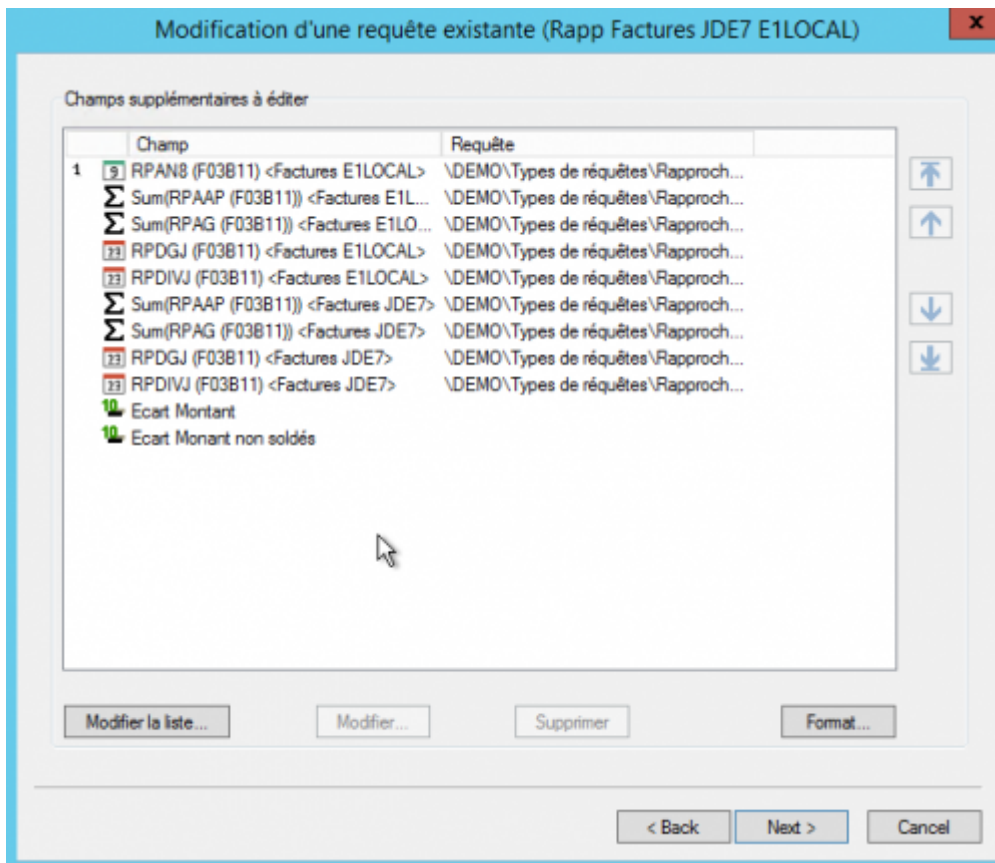
[< Back] [Next >] [Cancel]



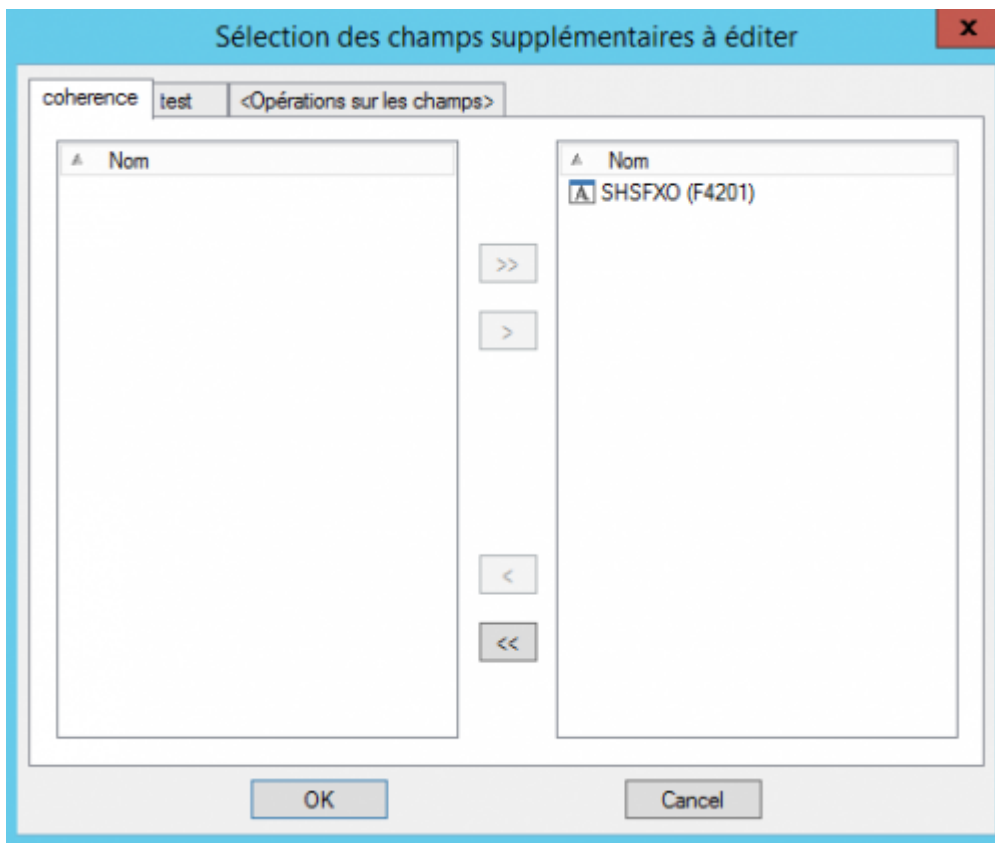
Only "=" joints are possible.

## Field Selection

Here again, the screen differs from the [consultation](#) (see [field selection](#)).



- We can't sort the records.
- The fields used in the reconciliation criteria are obligatorily displayed in the final report, so this screen only offers the **additional** fields.



The rest of the screen is similar.

## Screens not present

The following screens of the [consultation](#) are absent when creating a reconciliation :

- [appendix screen](#)
- [Currency decimal screen](#)

From: <https://vigilens.wiki/dokuwiki/> - **Vigilens Reporting Knowledge Garden**

Permanent link: [https://vigilens.wiki/dokuwiki/doku.php?id=en:v8\\_0\\_0:designer:menus:accueil:nouvelerequete:rapprochement&rev=1594211727](https://vigilens.wiki/dokuwiki/doku.php?id=en:v8_0_0:designer:menus:accueil:nouvelerequete:rapprochement&rev=1594211727)

Last update: **2020/07/08 14:35**

