

Matching

Usage

Matching allows you to do what [inquiry](#) does not allow: to have in the same query several data sources coming from several databases.

Difference from inquiry

Creation Screen

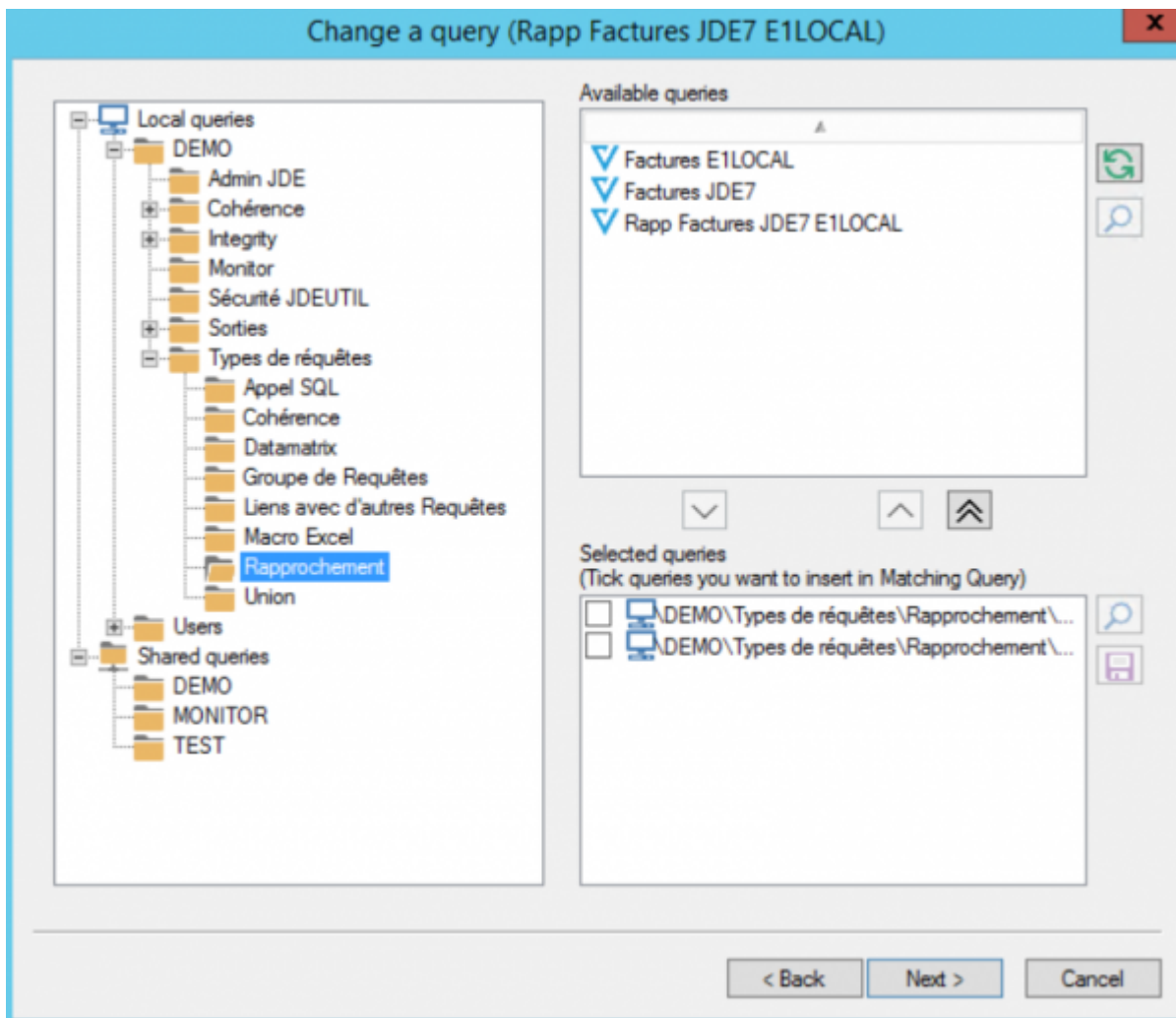
When the matching type is selected, the choice of the data source is grayed out, as well as the checkbox for time out and automatic disconnection.

The screenshot shows a dialog box titled "Change a query (CA par mois)". It contains several fields and options:

- Path:** \DEMO\Monitor
- Name:** CA par mois
- Description:** (Empty text area)
- Query type:** Radio buttons for Consistency, Inquiry (selected), Matching, Union, Query Group, and SQL Entry.
- Data source:** A table with columns Name, ODBC source name, ODBC driver, and Type. The row "JDE_VIGILENS" is selected.
- Actual environment:** E920 Development Environment
- EO/OW environment:** (Button)
- Checkboxes:** Disconnect automatically from database after query has run, Time out (Maximum authorized for this user : 3'), and Improve data export (record count and 'Cancel' button are disabled).
- Buttons:** < Back, Next >, Cancel

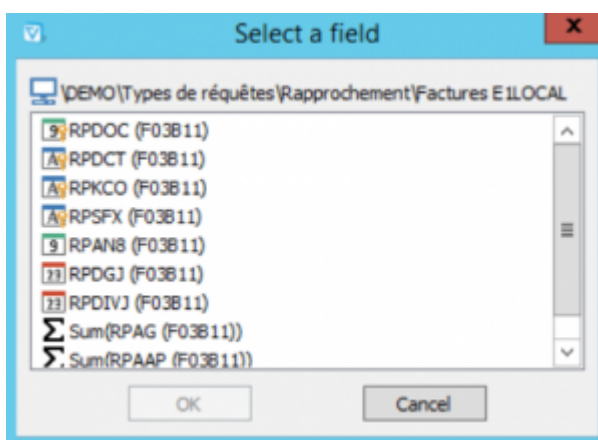
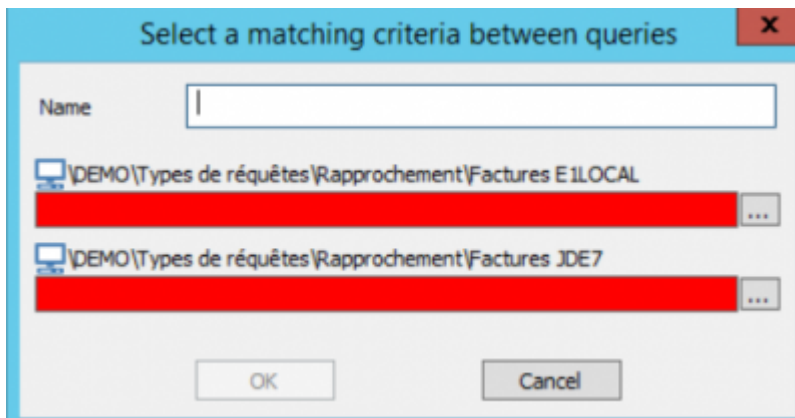
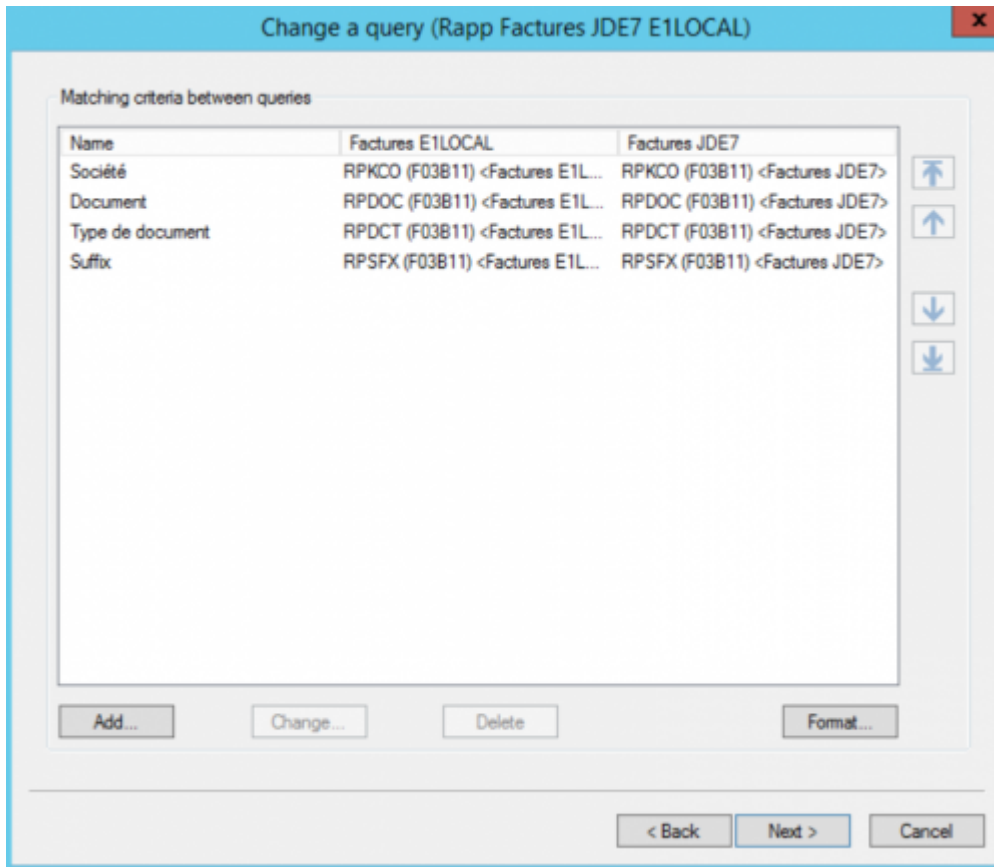
Choice of Queries

At the time of [data source selection](#), no table can be selected, only queries.



Matching Criteria

This is the analog for [the joints screen](#) for a [inquiry](#).



The dialog box has a title bar with a close button. It contains a text field labeled 'Name' with the value 'KCOO'. Below it are two list items, each with a small icon and a text field containing 'RPKCO (F03B11) <Factures E ILOCAL>' and 'RPKCO (F03B11) <Factures JDE7>' respectively. At the bottom are 'OK' and 'Cancel' buttons.

The dialog box has a title bar with a close button. It contains a section titled 'Critères de rapprochement entre les différentes requêtes'. Below this is a table with three columns: 'Nom', 'coherence', and 'test'. The table has five rows, with the last row highlighted in blue. To the right of the table are four arrow buttons: up, up, down, and down. At the bottom are buttons for 'Ajouter...', 'Modifier...', 'Supprimer', and 'Format...'. At the very bottom are '< Back', 'Next >', and 'Cancel' buttons.

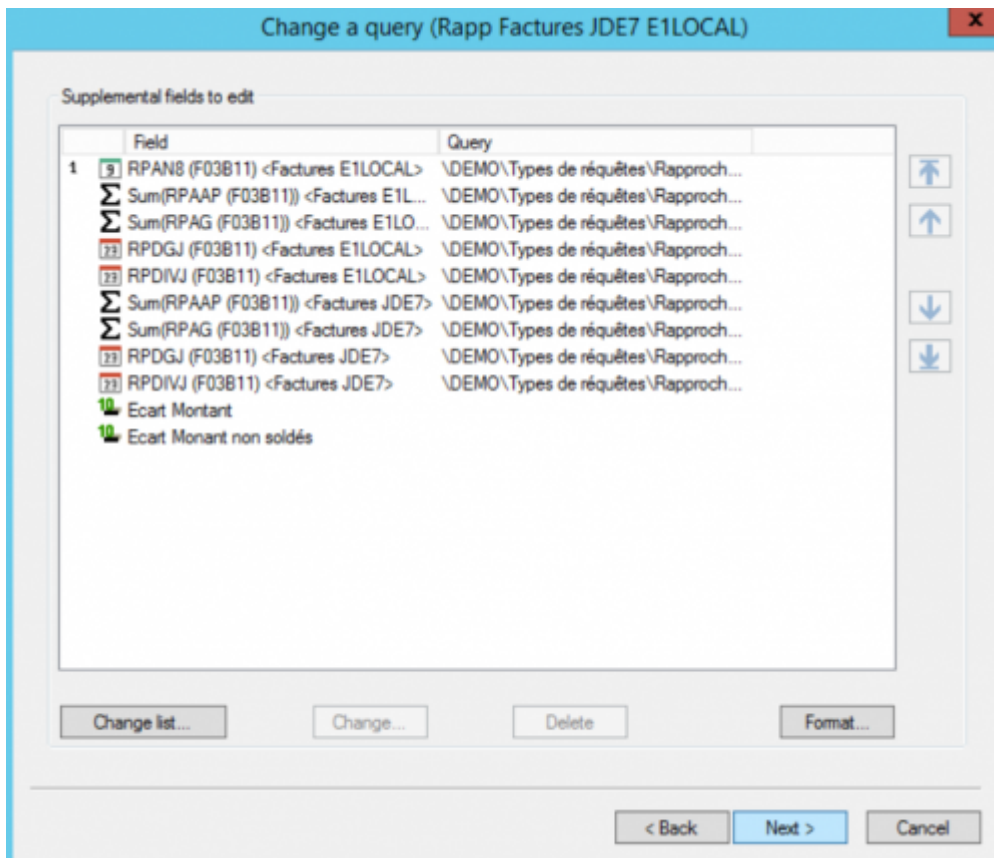
Nom	coherence	test
KCOO	SHKCOO (F4201) <coherence>	SHKCOO (F4201) <test>
DOCO	SHDOCO (F4201) <coherence>	SHDOCO (F4201) <test>
DCTO	SHDCTO (F4201) <coherence>	SHDCTO (F4201) <test>
LNID	SDLNID (F4211) <coherence>	SOLNID (F4211) <test>



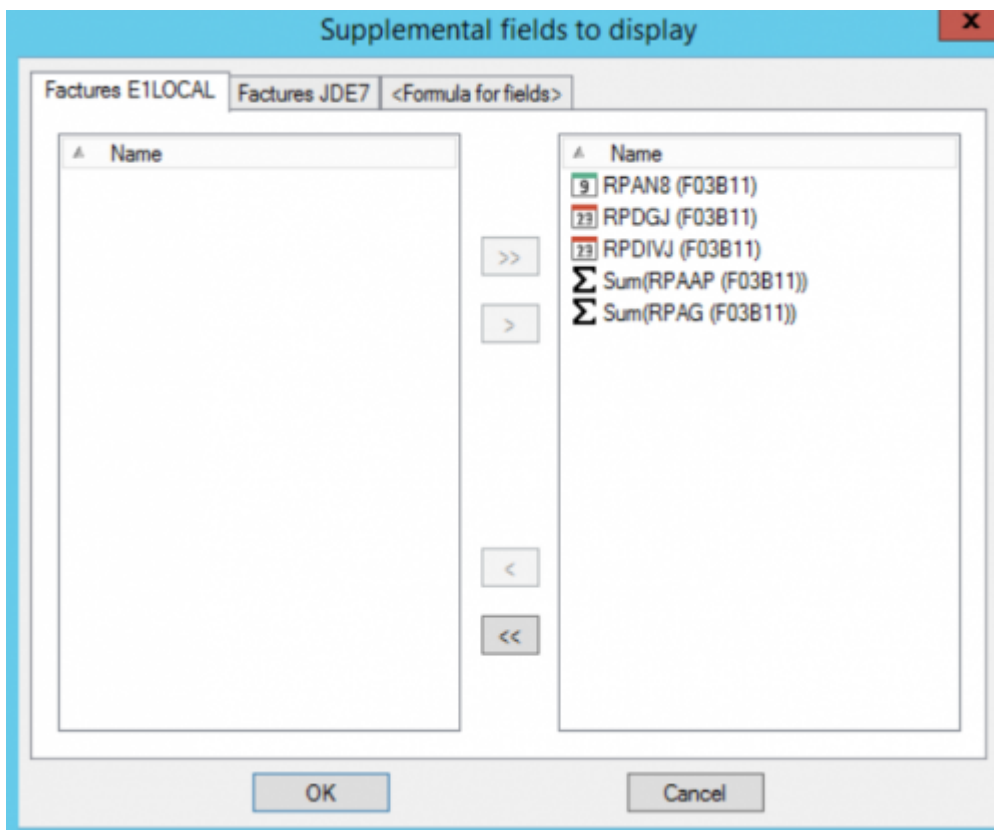
Only "=" joints are possible.

Field Selection

Here again, the screen differs from the [inquiry](#) (see [field selection](#)).



- We can't sort the records.
- The fields used in the matching criteria are obligatorily displayed in the final report, so this screen only offers the **additional** fields.



The rest of the screen is similar.

Screens not present

The following screens of the [inquiry](#) are absent when creating a matching :

- [appendix screen](#)
- [Currency decimal screen](#)

From: <https://vigilens.wiki/dokuwiki/> - **Vigilens Reporting Knowledge Garden**

Permanent link: https://vigilens.wiki/dokuwiki/doku.php?id=en:v8_0_0:designer:menus:accueil:nouvellerequete:rapprochement

Last update: **2020/09/03 15:57**

