

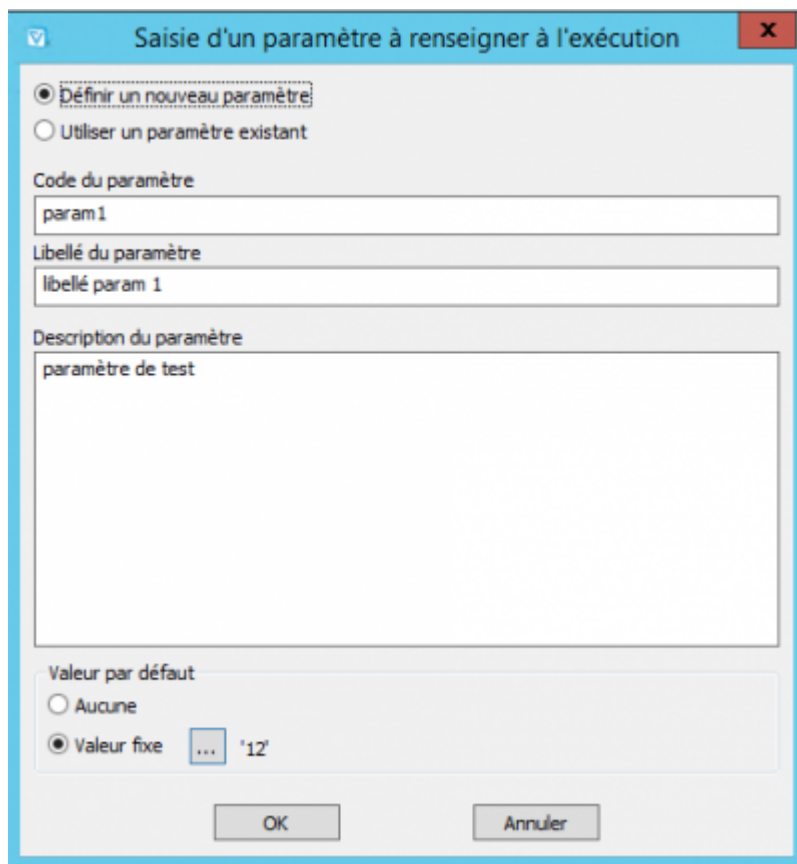
Parameters at runtime

Usage

Parameters are typically used by Vigilens to filter a subset of data when creating the report: for a particular company code, for a date or a date range, etc...

Creation

Parameters can be created in the screens that can use them, for example in conditions on joints or extractions according to criteria.

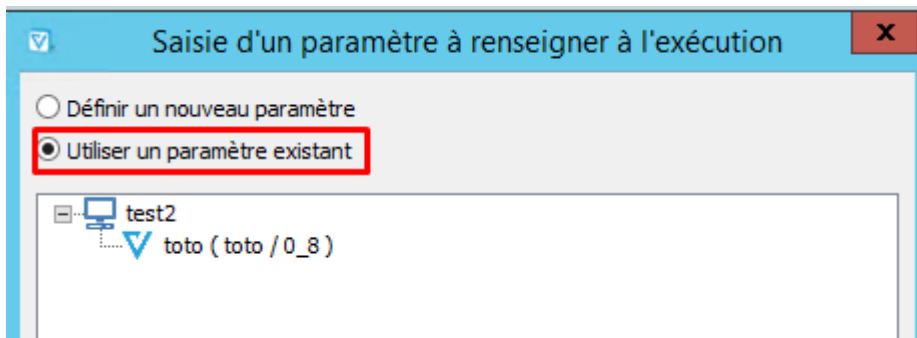


The screenshot shows a dialog box titled "Saisie d'un paramètre à renseigner à l'exécution". It contains the following elements:

- Two radio buttons: "Définir un nouveau paramètre" (selected) and "Utiliser un paramètre existant".
- A text input field for "Code du paramètre" containing "param 1".
- A text input field for "Libellé du paramètre" containing "libellé param 1".
- A text area for "Description du paramètre" containing "paramètre de test".
- A section for "Valeur par défaut" with two radio buttons: "Aucune" and "Valeur fixe" (selected). Next to "Valeur fixe" is a small input field containing "12".
- Buttons for "OK" and "Annuler" at the bottom.

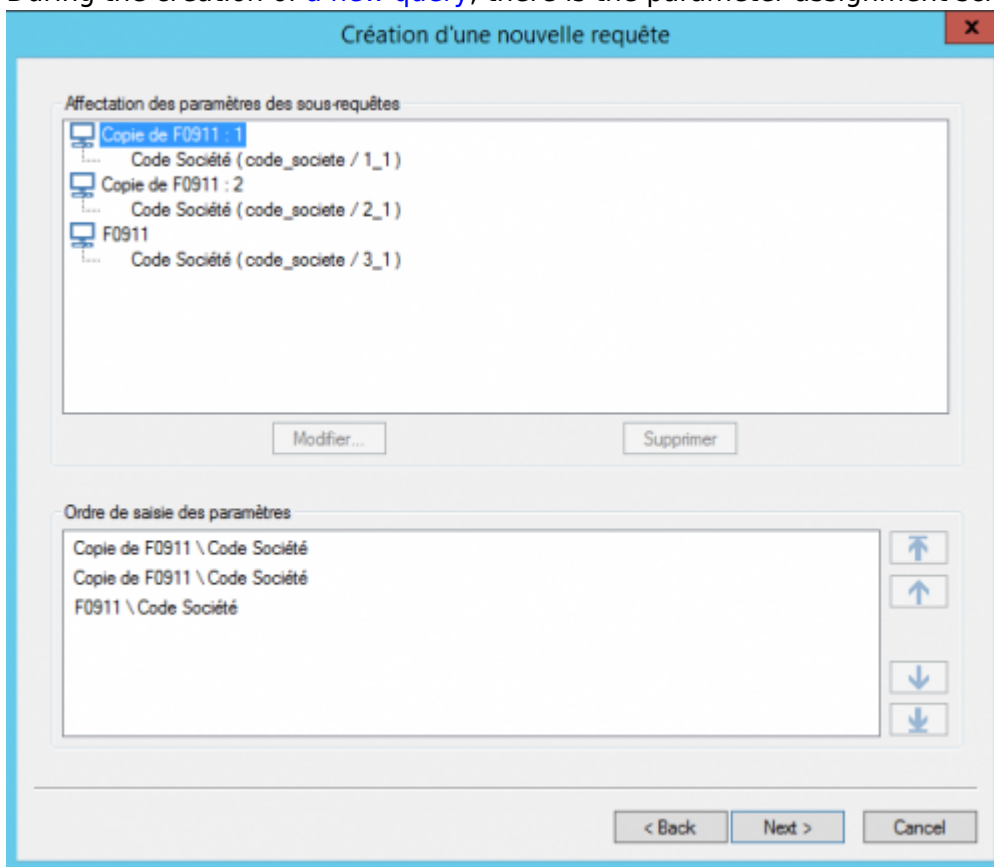
Reuse

In all the dialog boxes that accept parameters, any parameter already defined can be reused:



Mapping

During the creation of a new query, there is the parameter assignment screen :



This is where it's done:

- mapping the parameter passing between a calling query and a subquery
- the choice of the order in which all parameters are entered

We can go to a subquery:

- or a fixed value (single value, range or list of values)
- or the value of a parameter of the calling request.

The image displays three sequential screenshots of a software dialog box for parameter assignment. The first screenshot, titled "Affectation d'un paramètre", shows the "Valeur(s) fixe(s)" radio button selected, with a text field containing "Copie de F0911 \ Code Société <- ???". The second screenshot, titled "Valeur du paramètre : {Code Société}", shows a text input field for entering a value. The third screenshot, also titled "Affectation d'un paramètre", shows the "Paramètre" radio button selected, with a text field containing "F0911 \ Code Société <= {->parametre1}". Below these is a fourth screenshot titled "Saisie d'un paramètre à renseigner à l'exécution", where the "Utiliser un paramètre existant" radio button is selected. A tree view below shows a folder "test_param" containing a subfolder "parametre1 (parametre1/0_3)", which in turn contains three items: "Copie de F0911 : 1", "Copie de F0911 : 2", and "F0911".



You can of course reuse the same parameter several times. For example, if we have several subqueries that have a company code as a parameter and/or a criterion about the company in the calling query, it makes sense to reuse the same parameter each time. Thus, at runtime, we will have a single entry of this parameter.

From: <https://vigilens.wiki/dokuwiki/> - **Vigilens Reporting Knowledge Garden**

Permanent link: https://vigilens.wiki/dokuwiki/doku.php?id=en:v8_0_0:designer:menus:accueil:nouvellerequete:parametres&rev=1594383003

Last update: **2020/07/10 14:10**

