

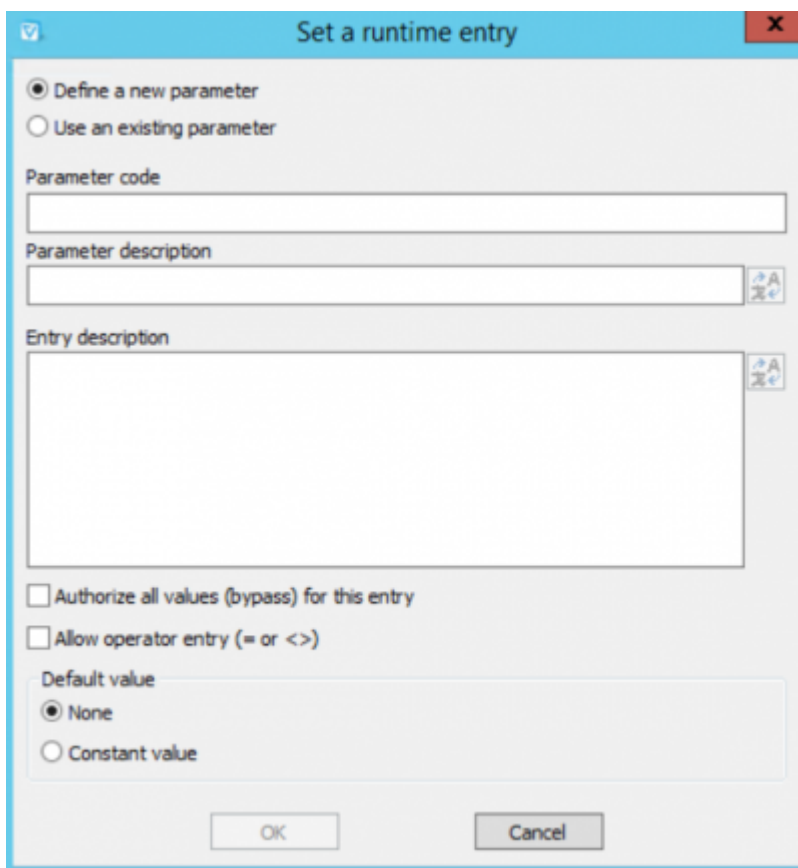
Parameters at runtime

Usage

Parameters are typically used by Vigilens to filter a subset of data when creating the report: for a particular company code, for a date or a date range, etc...

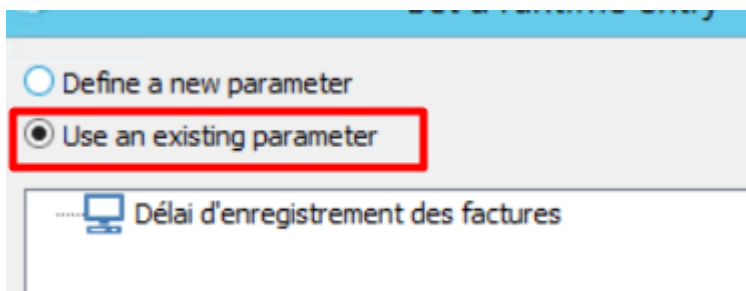
Creation

Parameters can be created in the screens that can use them, for example in conditions on joints or extractions according to criteria.



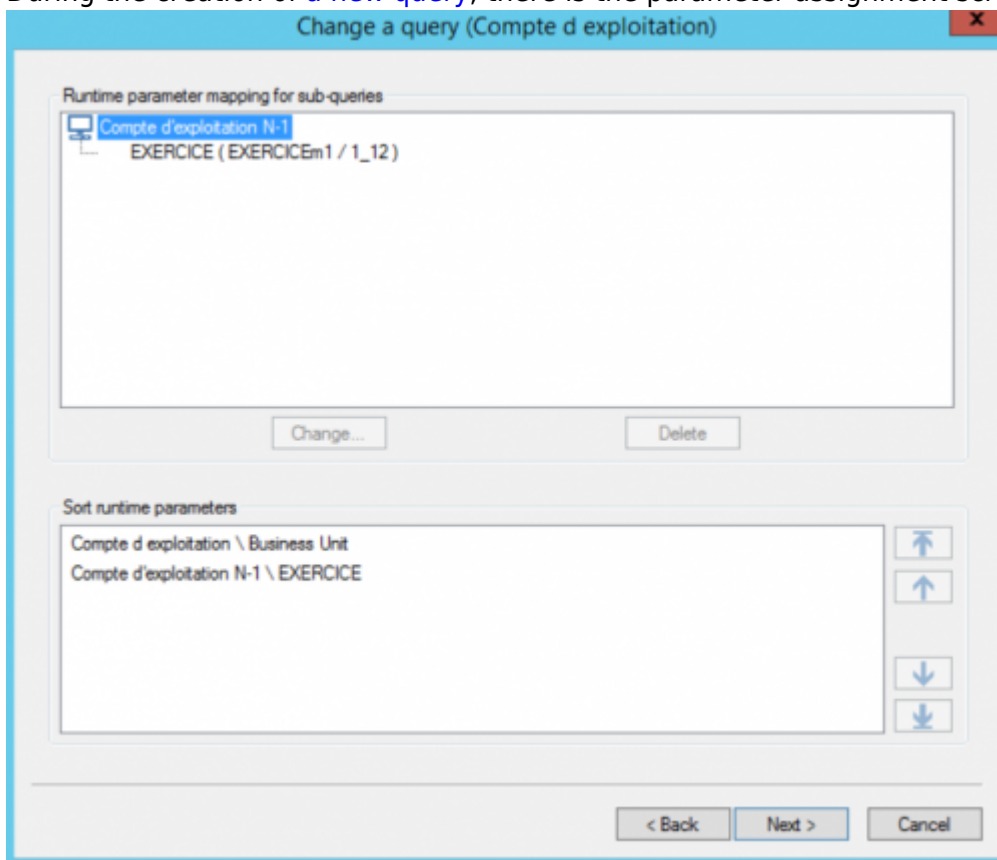
Reuse

In all the dialog boxes that accept parameters, any parameter already defined can be reused:



Mapping

During the creation of a new query, there is the parameter assignment screen :

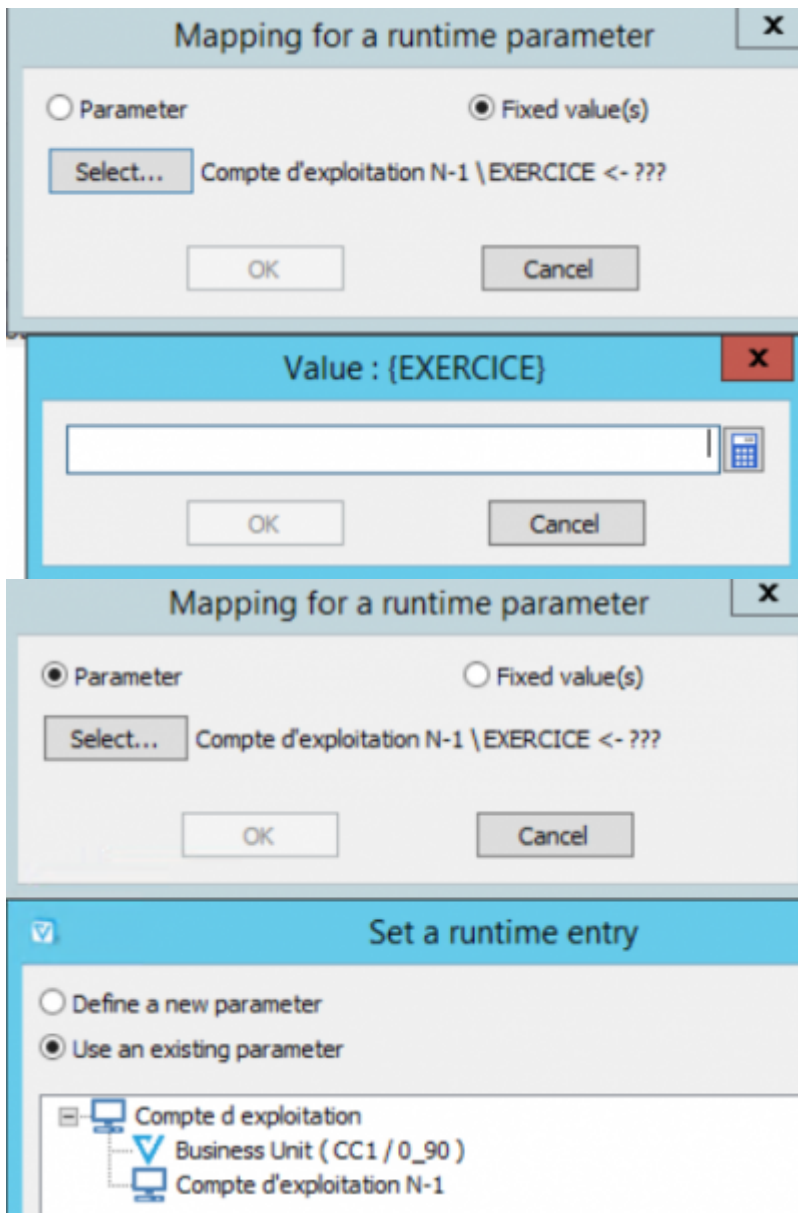


This is where it's done:

- mapping the parameter passing between a calling query and a subquery
- the choice of the order in which all parameters are entered

We can go to a subquery:

- or a fixed value (single value, range or list of values)
- or the value of a parameter of the calling request.



You can of course reuse the same parameter several times. For example, if we have several subqueries that have a company code as a parameter and/or a criterion about the company in the calling query, it makes sense to reuse the same parameter each time. Thus, at runtime, we will have a single entry of this parameter.

From: <https://vigilens.wiki/dokuwiki/> - **Vigilens Reporting Knowledge Garden**

Permanent link: https://vigilens.wiki/dokuwiki/doku.php?id=en:v8_0_0:designer:menus:accueil:nouvelrequete:parametres

Last update: **2020/07/16 11:47**

