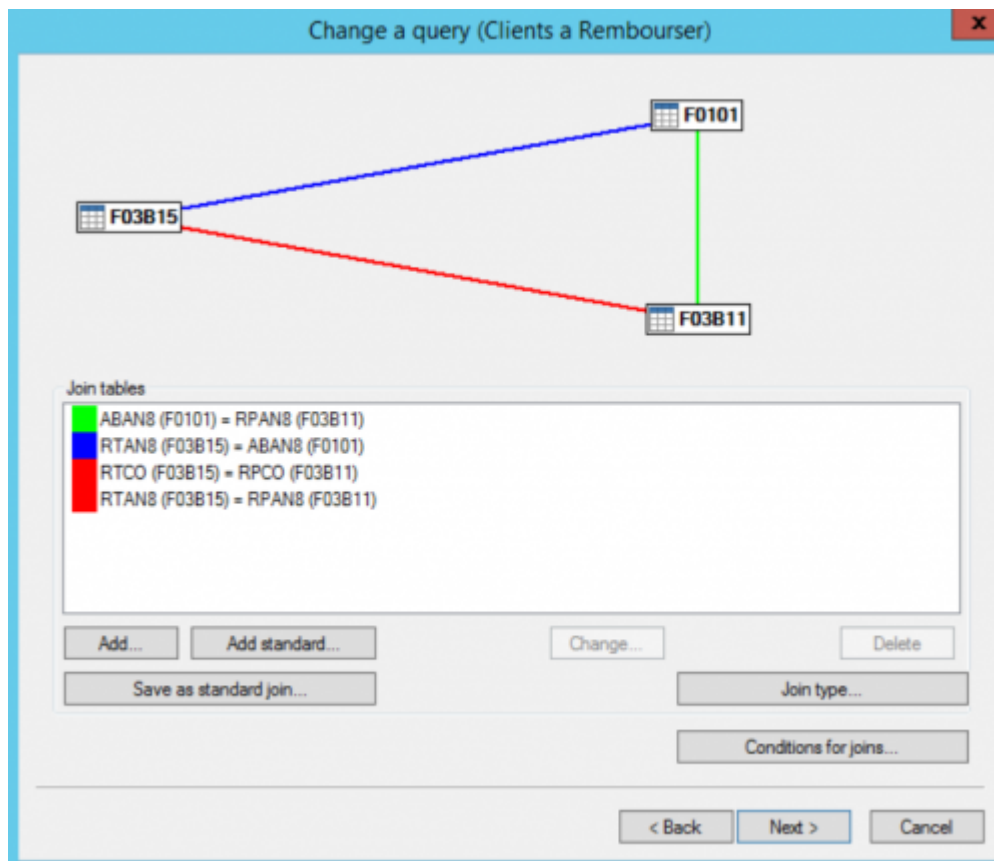
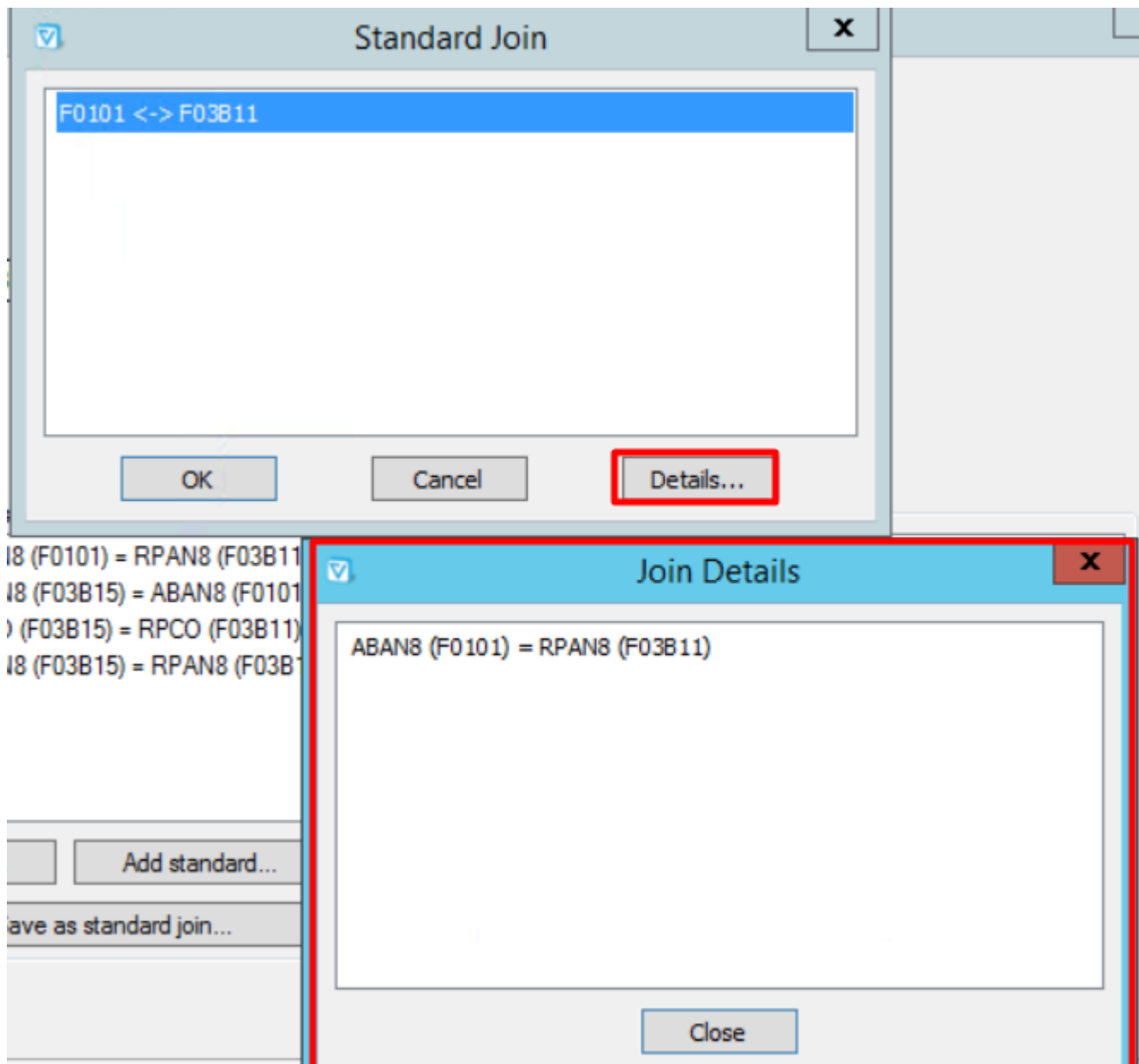


# Joins



## Standard joints

The tool Add Standard allows you to create automatically the links between tables:



Création d'une nouvelle requête

F4201 — F4211

Jointures entre les tables

- SHDCTO (F4201) = SDDCTO (F4211)
- SHDOCO (F4201) = SDDOCO (F4211)
- SHKCOO (F4201) = SDKCOO (F4211)

Ajouter... Ajouter standard... Modifier... Supprimer

Enregistrer jointure standard... Type de jointures...

Conditions sur les jointures...

< Back Next > Cancel

When joints have been modified or added manually, it is possible to add them to the Vigilens standard joints library: just use the button Record standard joints, a screen allows you to select the joints then give a name to the joint.

Save Standard Join

F0101 <-> F03B11  
F0101 <-> F03B15  
F03B11 <-> F03B15

Save Cancel Detail for current join...

Descriptif de la jointure

F4201 <-> F4211

jointure\_test

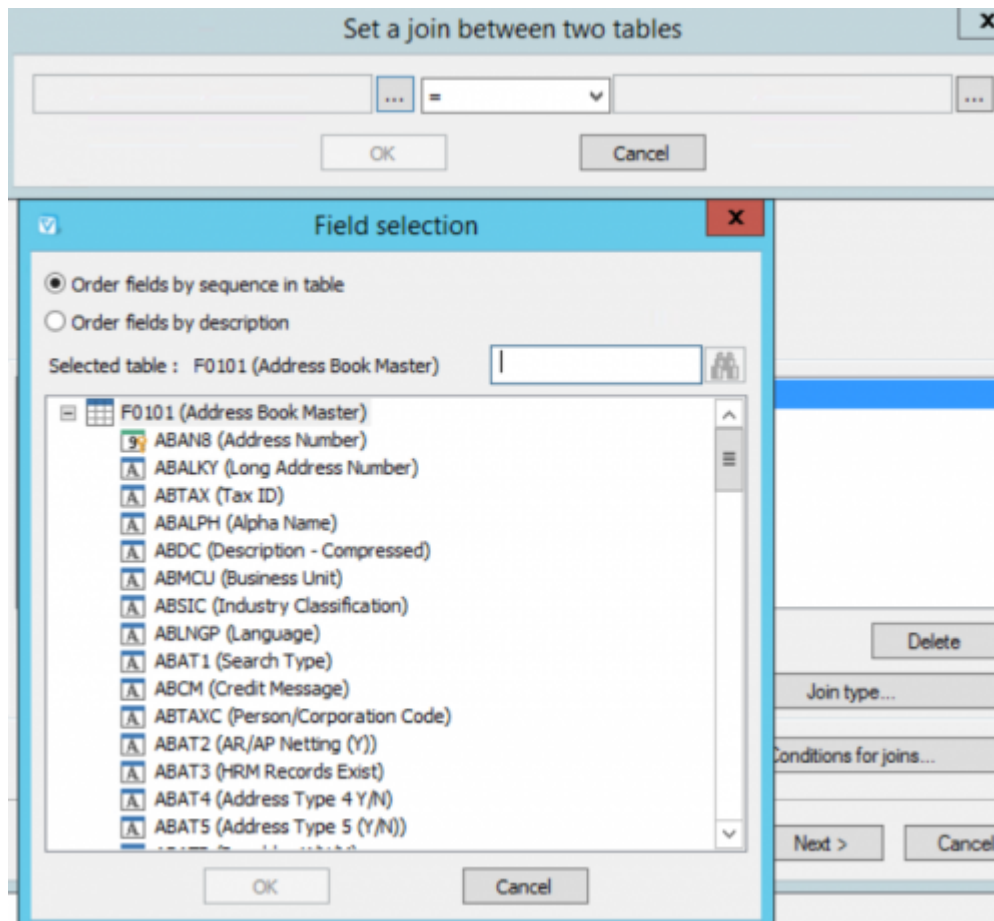
OK Annuler

## Manual Joins

If the necessary joints are not known to Vigilens, these links must be specified manually.

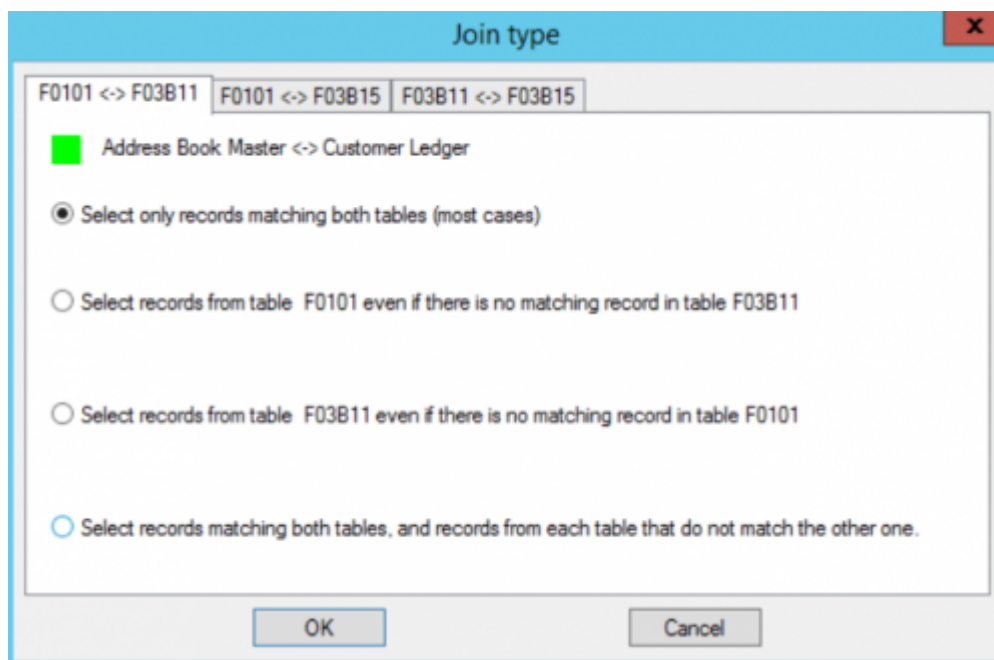
### Add

The first field of the join, the relationship type, and then the second field is selected.



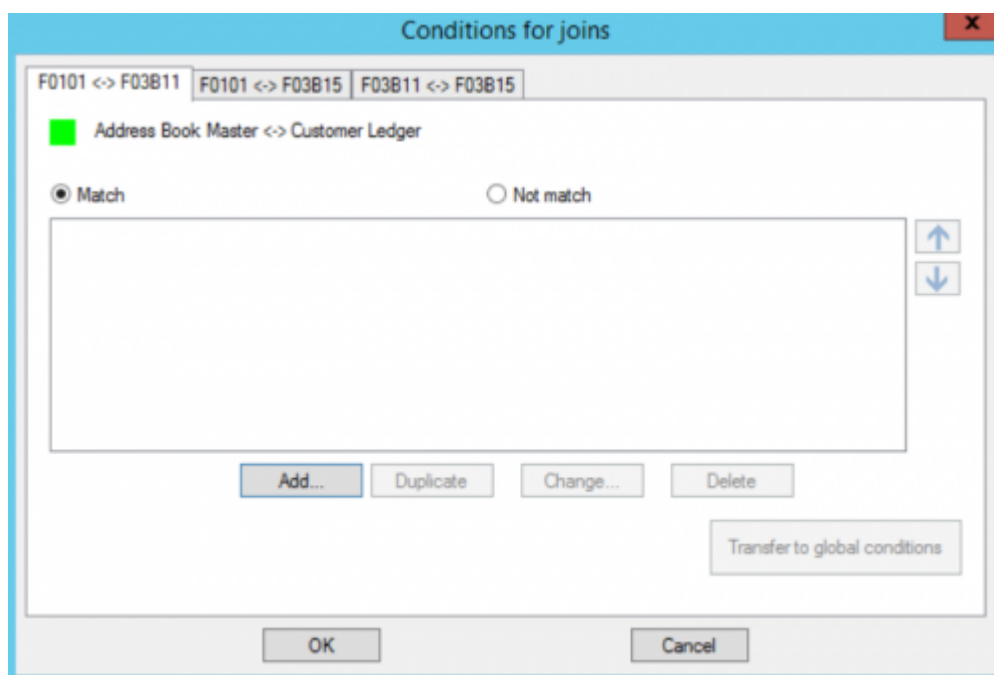
## Joint Type

You can choose to have an open or closed joint.



The "Join type" dialog box shows a list of join types at the top: "F0101 <-> F03B11", "F0101 <-> F03B15", and "F03B11 <-> F03B15". Below this, a green square icon is next to the text "Address Book Master <-> Customer Ledger". There are four radio button options: "Select only records matching both tables (most cases)" (selected), "Select records from table F0101 even if there is no matching record in table F03B11", "Select records from table F03B11 even if there is no matching record in table F0101", and "Select records matching both tables, and records from each table that do not match the other one." At the bottom are "OK" and "Cancel" buttons.

## Joint Conditions



The "Conditions for joins" dialog box shows the same join types at the top. Below, a green square icon is next to "Address Book Master <-> Customer Ledger". There are two radio button options: "Match" (selected) and "Not match". Below these is a large empty text area with up and down arrow buttons on the right. At the bottom of the text area are buttons: "Add...", "Duplicate", "Change...", "Delete", and "Transfer to global conditions". At the very bottom are "OK" and "Cancel" buttons.

## Case in point



Although very similar, this section should not be confused with the "Extract according to the following rule" screen. The filters indicated here will be applied \_\_ before the join is made. This distinction is important in the case of open joins, as the result would not be the same.

From an SQL point of view, it is the difference between

```
SELECT Parent,* Child,* FROM Parent
LEFT JOIN Child
ON Child.Id = Parent.Id
AND Child.Name = 'Barnabé'.
```

and

```
SELECT Parent,* Child,* FROM Parent
LEFT JOIN Child
ON Child.Id = Parent.Id
WHERE Child.Name = 'Barnabé' = 'Barnabé'.
```

The first case is equivalent to putting the condition on the joint: all the parents, and their children if their name is Barnabé, will be included in the selection.

The second case is equivalent to putting the condition on the “Extraction according to the following rule” screen. We will only retrieve the parents who have a child named Barnabé. The filter “killed” the open joint.

## Editing Criteria

[See dedicated page](#)

## General conditions

A condition can be transferred to the general conditions list.



#TODO check with denis for the automatic proposal of transfer to extractions

Conditions for joins

F4101 <-> F41021

Item Master <-> Item Location File

Match

Not match

Add...

Duplicate

Change...

Delete

Transfer to global conditions

OK

Cancel

From:  
<https://vigilens.wiki/dokuwiki/> - Vigilens Reporting Knowledge Garden

Permanent link:  
[https://vigilens.wiki/dokuwiki/doku.php?id=en:v8\\_0\\_0:designer:menus:accueil:nouvellerequete:jointures&rev=1594217572](https://vigilens.wiki/dokuwiki/doku.php?id=en:v8_0_0:designer:menus:accueil:nouvellerequete:jointures&rev=1594217572)

Last update: 2020/07/08 16:12

A square QR code located in the bottom right corner of the footer section, which likely links to the permanent link provided in the text above it.

Vigilens Reporting Knowledge Garden - <https://vigilens.wiki/dokuwiki/>