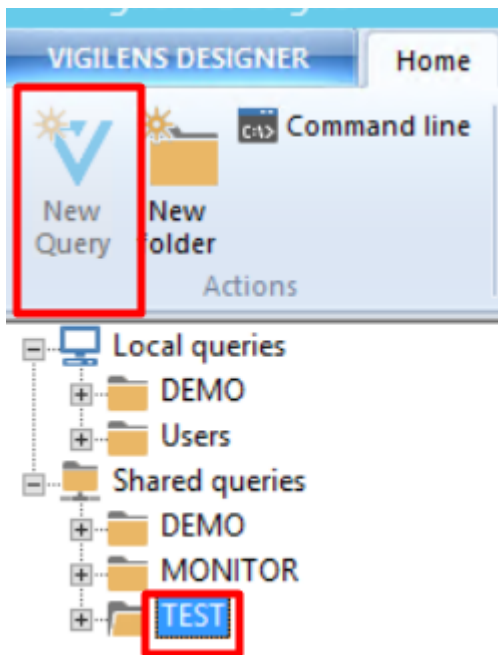


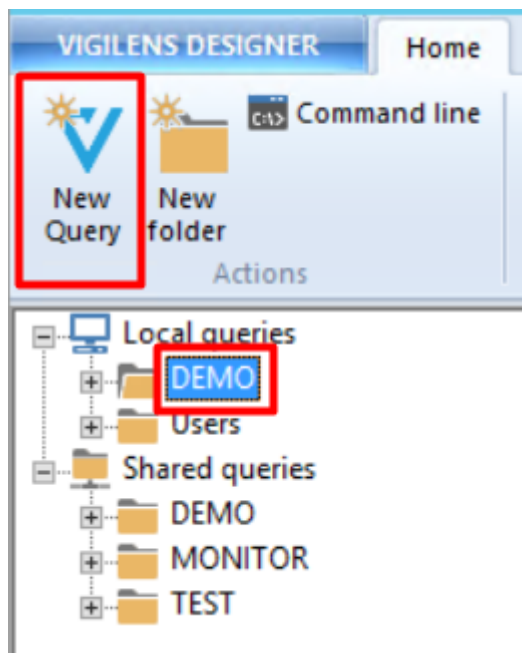
Focus and query creation

- if the focus (highlighting) is on a sub-element of the Shared Queries folder of [Existing and Shared Queries panel](#), it is not possible to create a query, the button is grayed out.

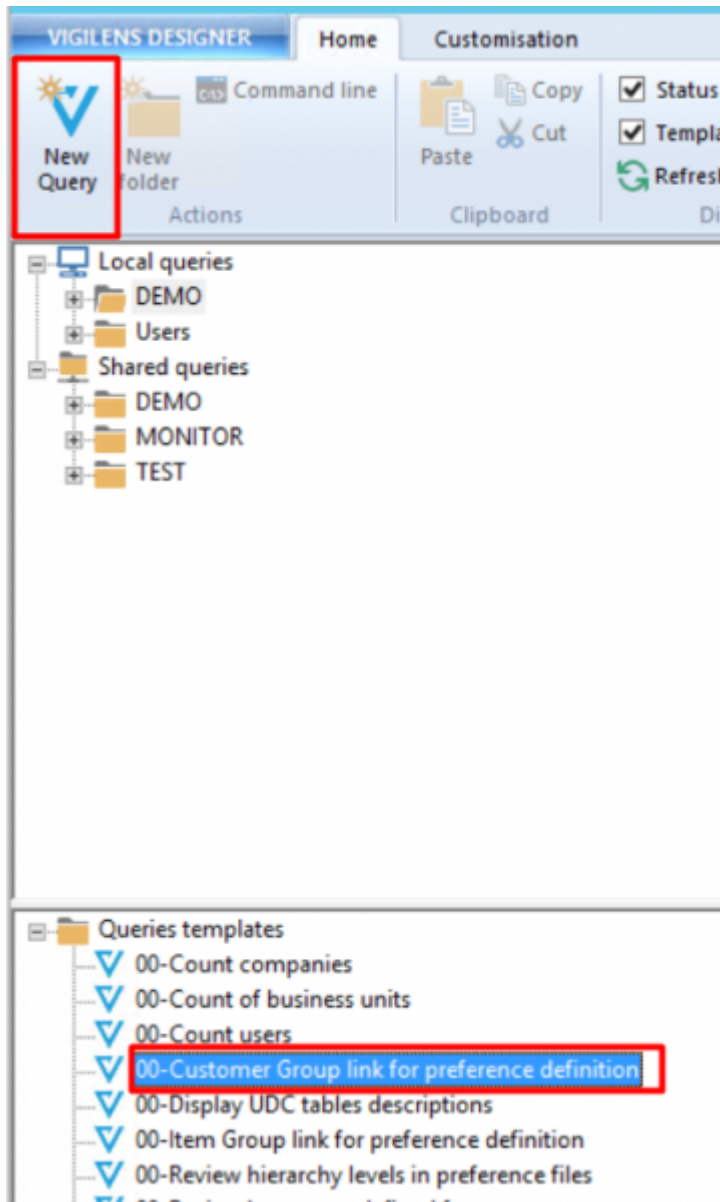


Queries __ can only be created or modified in the user directory. To make them accessible to other users, you must [publish](#) the query.

- if the focus (highlighting) is on a sub-element of the Local queries folder in [Existing and Shared Requests panel](#), then
 - the new query will be created from a blank template
 - it will be stored at the same level as the highlighted item, in it if the highlighted item is a folder.



- if the focus (highlighting) is on an element of the [Queries templates panel](#), then
 - the new query will be created from the selected template
 - it will be placed at the root of the existing queries directory



From: <https://vigilens.wiki/dokuwiki/> - **Vigilens Reporting Knowledge Garden**

Permanent link: https://vigilens.wiki/dokuwiki/doku.php?id=en:v8_0_0:designer:menus:accueil:nouvellerequete:focus

Last update: **2020/07/09 10:44**

