

Report Designer

Layouts examples:

| | | Compte d'exploitation | | 2019 | |
|---------------------------------|---------------------------------|-----------------------|----------------------|------|----------------------|
| | | VIGILENS COMPANY | | | |
| RESULTAT EXPLOITATION | | | | | |
| Charges d'exploitation | | | | | |
| | | | Exercice N | | Exercice N-1 |
| | Achats de marchandises | | -1 282 112.64 | | -1 270 107.64 |
| | Autres charges | | -64 776.39 | | -62 776.3 |
| | Autres charges externes | | -840 801.35 | | -841 179.16 |
| | Charges sociales | | -126 411.76 | | -123 411.76 |
| | Dotations aux amortissements | | -71 601.6 | | -71 250.24 |
| | Impôts taxes et vers Ass | | -101 082.52 | | -102 494.42 |
| | Salaires et traitements | | -424 116.87 | | -434 116.1 |
| | Variation de stock de Mses | | -518 372.38 | | -519 097.7 |
| TOTAL | Charges d'exploitation | | -3 429 275.51 | | -3 424 433.32 |
| Produits d'exploitations | | | | | |
| | Autre produits d'exploitation | | 485 124.09 | | 484 507 |
| | Produits financiers | | 5 219.72 | | 5 780.62 |
| | Subvention d'exploitation | | 4 381.13 | | 4 384.04 |
| | Ventes de marchandises | | 2 912 143.27 | | 2 812 117.24 |
| TOTAL | Produits d'exploitations | | 3 406 868.21 | | 3 306 788.9 |
| TOTAL | RESULTAT EXPLOITATION | | -22 407.3 | | -117 644.42 |
| RESULTAT FINANCIER | | | | | |
| Charges financières | | | | | |
| | Charges financières | | -74 456.33 | | -72 456.2 |
| | Dotations aux amortissements | | -36 335.26 | | -36 435.22 |
| TOTAL | Charges financières | | -110 791.59 | | -108 891.42 |



FICHE ARTICLE

| | | | |
|---------------------|-------------------------|--------------------------|--------|
| Code Article | 220 | Touring Bike, Red | |
| Code Catégorie 1 | Bicycle Catalog Section | UM principale | Each |
| Code Catégorie 2 | Touring Bike Section | UM poids | Pounds |
| Code Catégorie 3 | Premium | Data Matrix | |

| Stock et Valorisation | | |
|-----------------------|------------|--------------|
| En Stock | Coût Moyen | Valeur |
| 3752 | 738,67 | 2 771 504,25 |

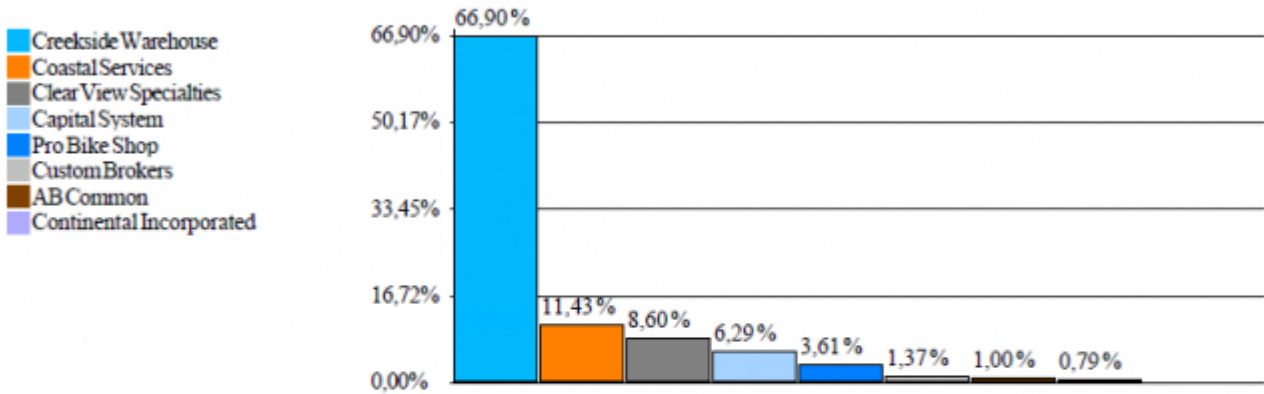
| Conversion des unités de mesure | | |
|---------------------------------|------------|-----|
| UM | Conversion | UM |
| Each | 16,4520000 | Bag |

| Ventes Réalisées | | | |
|------------------|-----------|-------|---------------------------------|
| Qté | CA | Devis | Client |
| 329 | 26 200,00 | USD | Creekside Warehouse |
| 5 | 3 250,00 | USD | Western Distributor |
| 12 | 7 800,00 | USD | Central Distributor |
| 20 | 13 000,00 | USD | CSC Corporation |
| 6 | 3 900,00 | EUR | Schwartz Warenhaus Gemeinschaft |
| 5 | 3 217,50 | CAD | Carmanah Industries |
| 60 | 39 000,00 | USD | Cloud Nine Inc. |



TOP 10 Clients

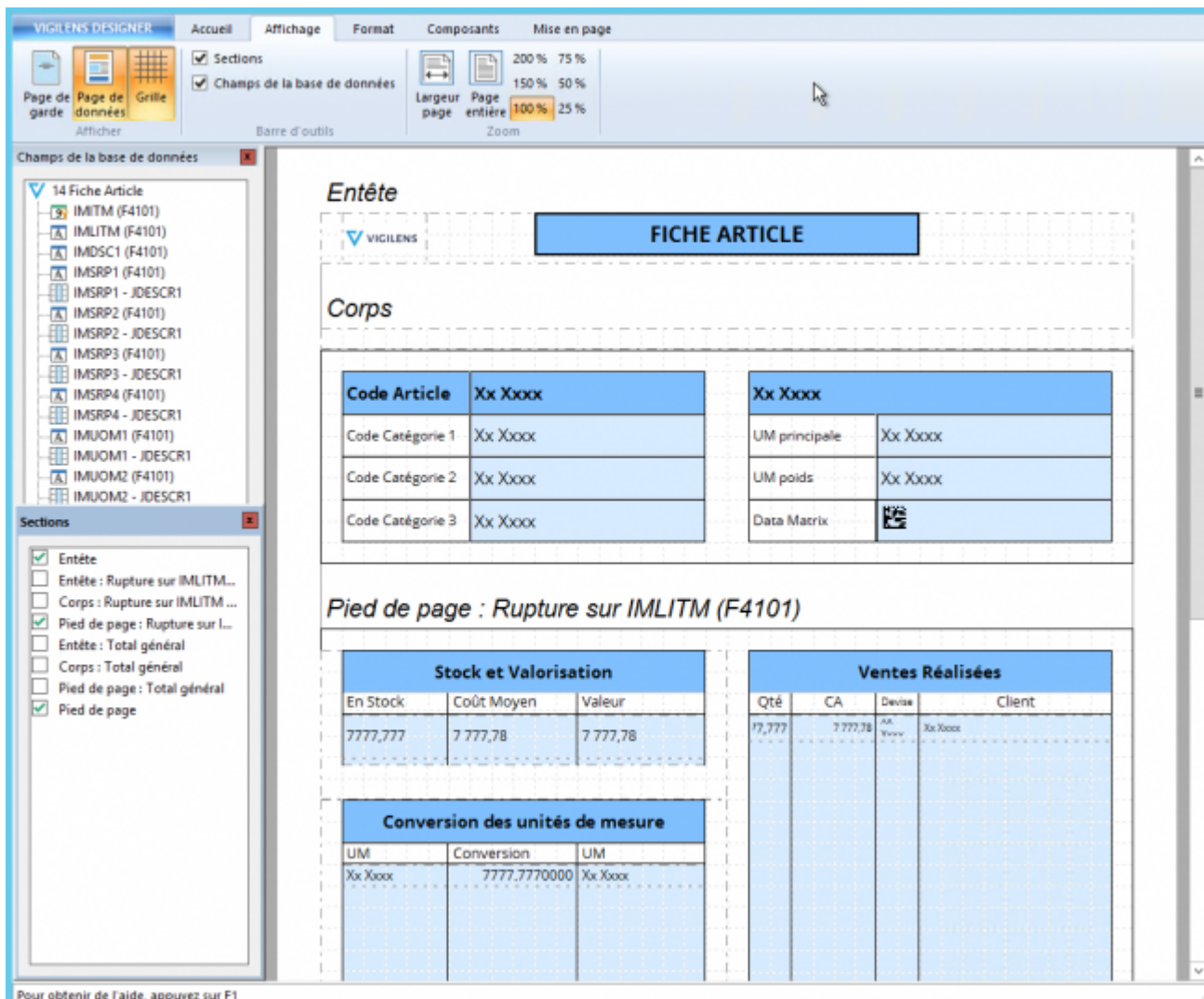
7 juillet 2020



| Client | Chiffre d'affaire | Devis |
|--------------------------|-------------------|-------|
| Creekside Warehouse | 17 069 475 | USD |
| Coastal Services | 2 916 741 | USD |
| Clear View Specialties | 2 195 372 | USD |
| Capital System | 1 605 719 | USD |
| Pro Bike Shop | 921 161 | USD |
| Custom Brokers | 350 230 | USD |
| AB Common | 254 928 | USD |
| Continental Incorporated | 201 761 | USD |

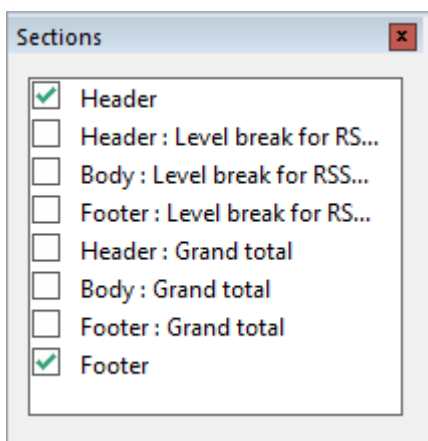
Presentation

The Report Designer is dedicated program that allow you to create a layout for your report.



Pannls

Sections panel



This panel allows you to add or delete the different sections of the document: general header, footer, break section etc...

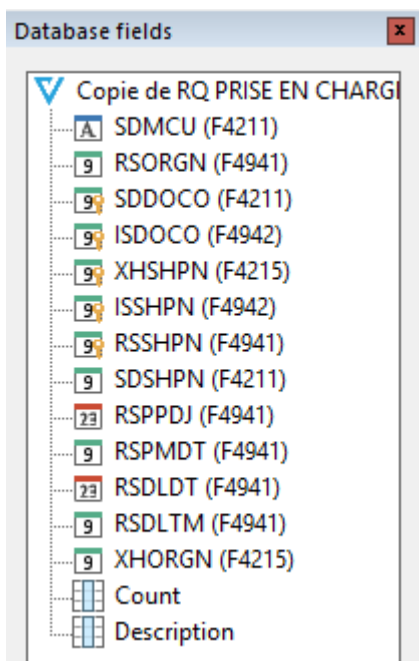


If you uncheck one of the sections, you will not just hide it, but remove its content.



There's a Body section that doesn't appear in the list, since it's the main body, you can't delete it.

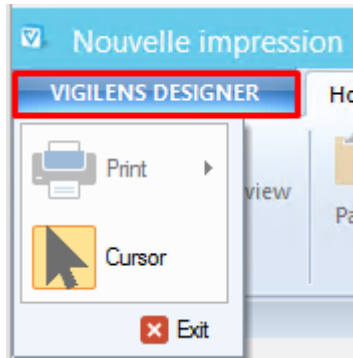
Database fields panel



This panel lists all usable fields (table, subqueries or calculated) and allows you to drag and drop them on the layout.

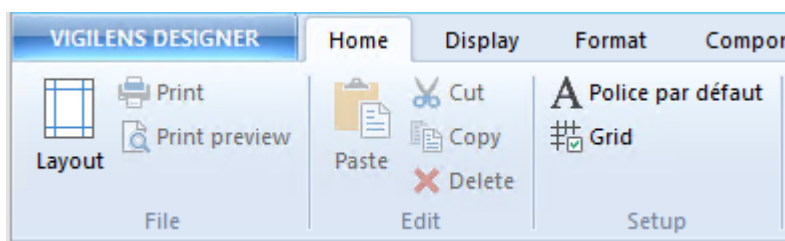
Menus

Vigilens designer



This quick menu offers some common printing actions, as well as a Cursor icon to deselect the current tool.

Home



This menu offers :

- classic printing and editing tools
- default font setup
- report grid configuration





The grid is “magnetic”: when objects are moved with the mouse, they “stick” to the grid, whether it is displayed or not. If one wants to move an object finely without it being on the grid, it is necessary to use the options of the object (see below).

Body

| RSORGN | RSORGN | SDDOCO | XHSHP |
|--------|--------|--------|-------|
| 7778 | 7778 | 7778 | 7778 |

- Align
- Adjust
- Center within section
- Order
- Conditional format...
- Cut Ctrl+X
- Copy Ctrl+C
- Paste Ctrl+V
- Delete Del
- Properties...**

Properties

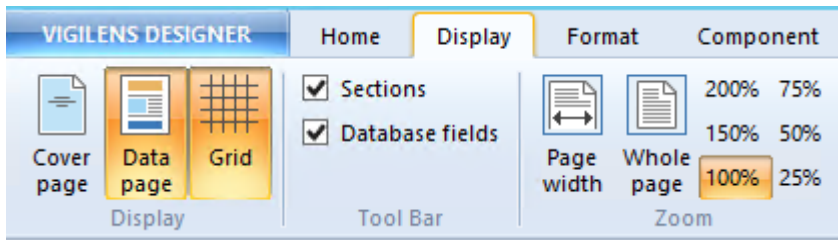
Text | Position / Size | Border | Background color

Position (regarding section)
Horizontal: 0,00 cm Vertical: 0,00 cm

Size
Width: 2,00 cm Height: 0,85 cm

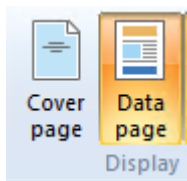
OK Cancel

Display

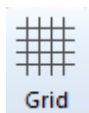


Display

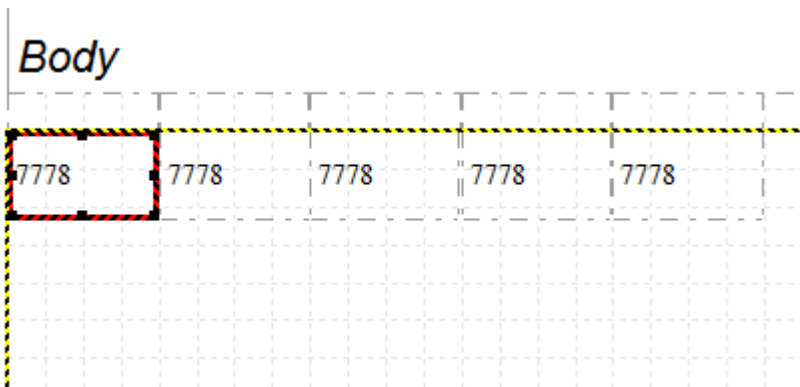
You can have a cover page added to your report. These buttons toggle between editing the cover page and the data page.



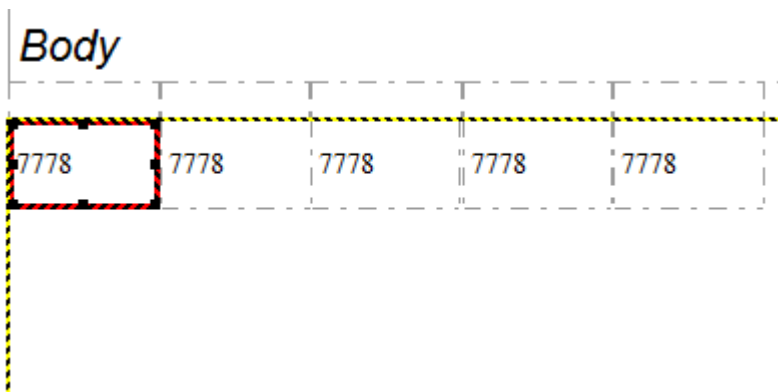
the last button is used to display or not the grid.



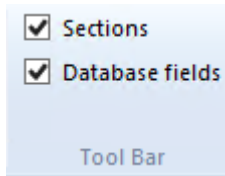
Grid on:



Grid off:

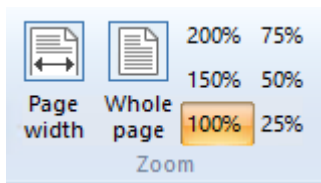


Tool Bar



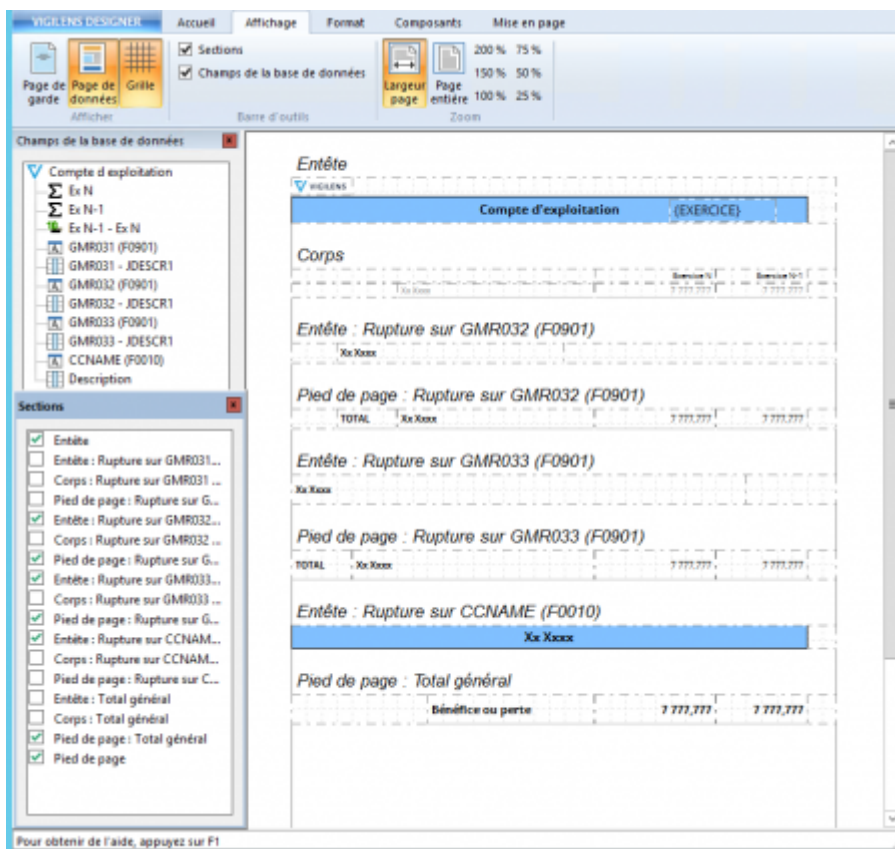
Hide or show [Sections panel](#) and [Database fields panel](#)

Zoom

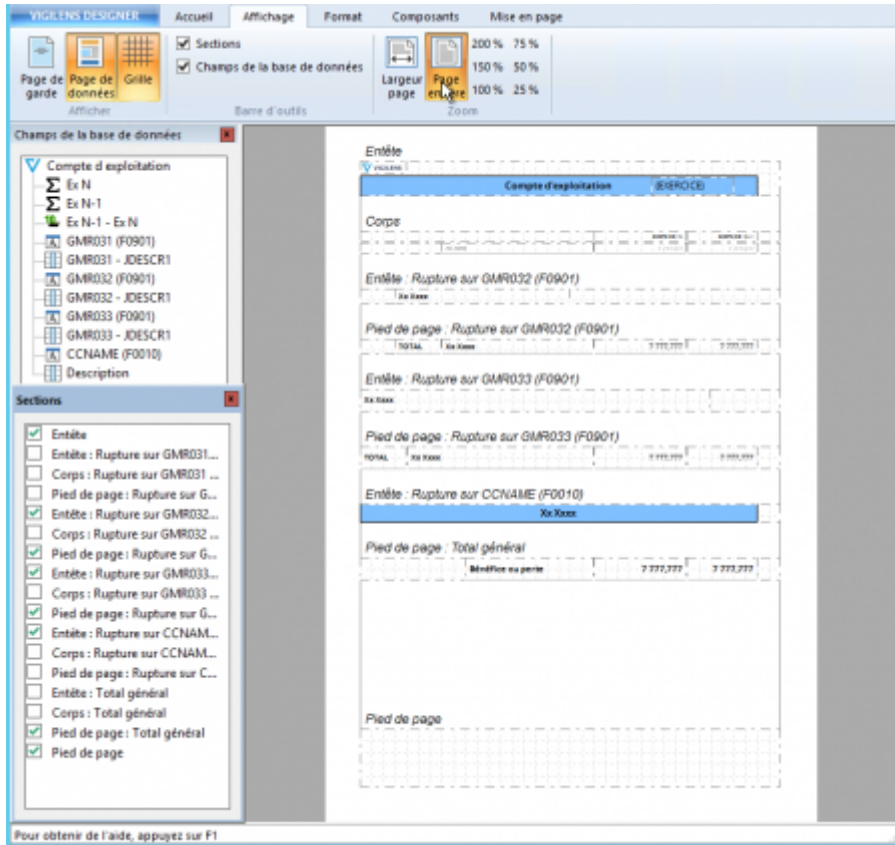


Choice of zoom level, with the possibility of automatic adjustment to display either the entire page on the screen, or adapt the zoom level to have the full width of the report in the editing screen.

Full width zoom :



Full page zoom :



Format

From: <https://vigilens.wiki/dokuwiki/> - Vigilens Reporting Knowledge Garden

Permanent link: https://vigilens.wiki/dokuwiki/doku.php?id=en:v8_0_0:designer:menus:accueil:nouvellerequete:editeurimpression:start&rev=1594217388

Last update: 2020/07/08 16:09

