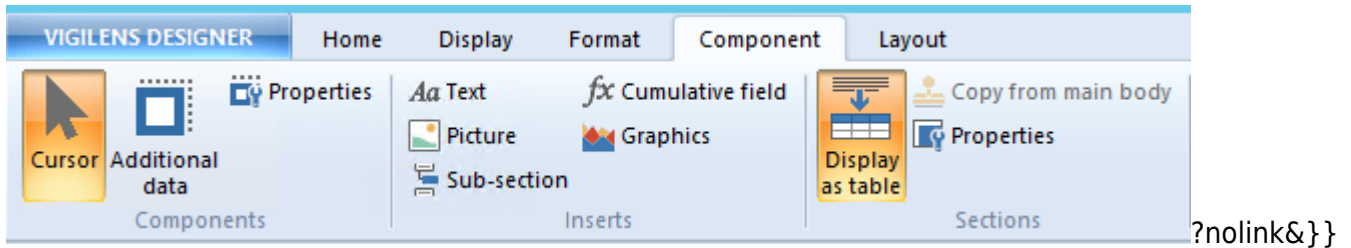
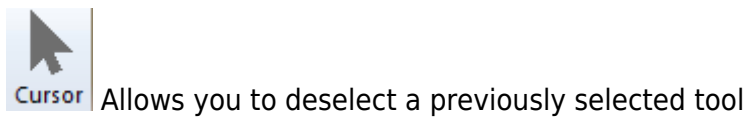


Components Menu

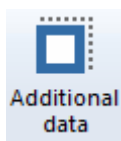


Components

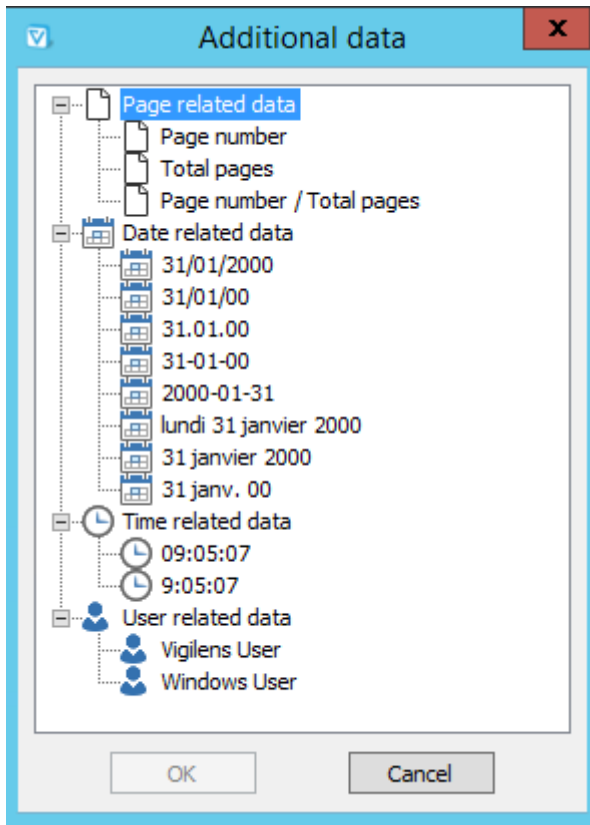
Cursor



Additional Data



After clicking this button, select an area on the report to add a field such as the page number, the date or time of the day of printing, or the name of the user.



Properties

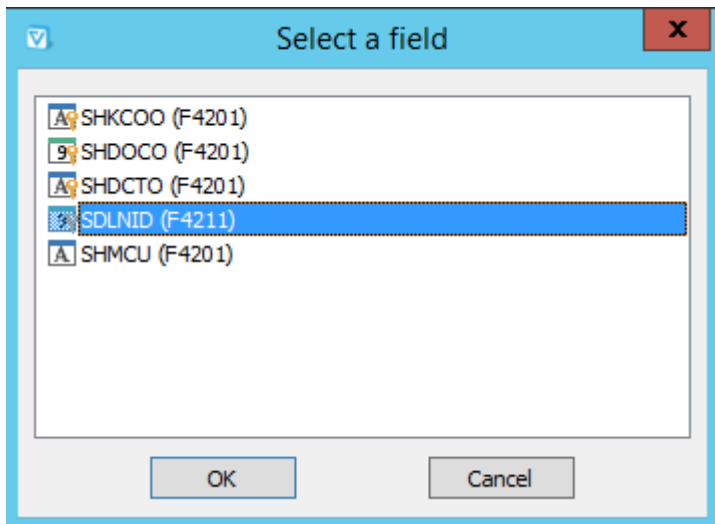


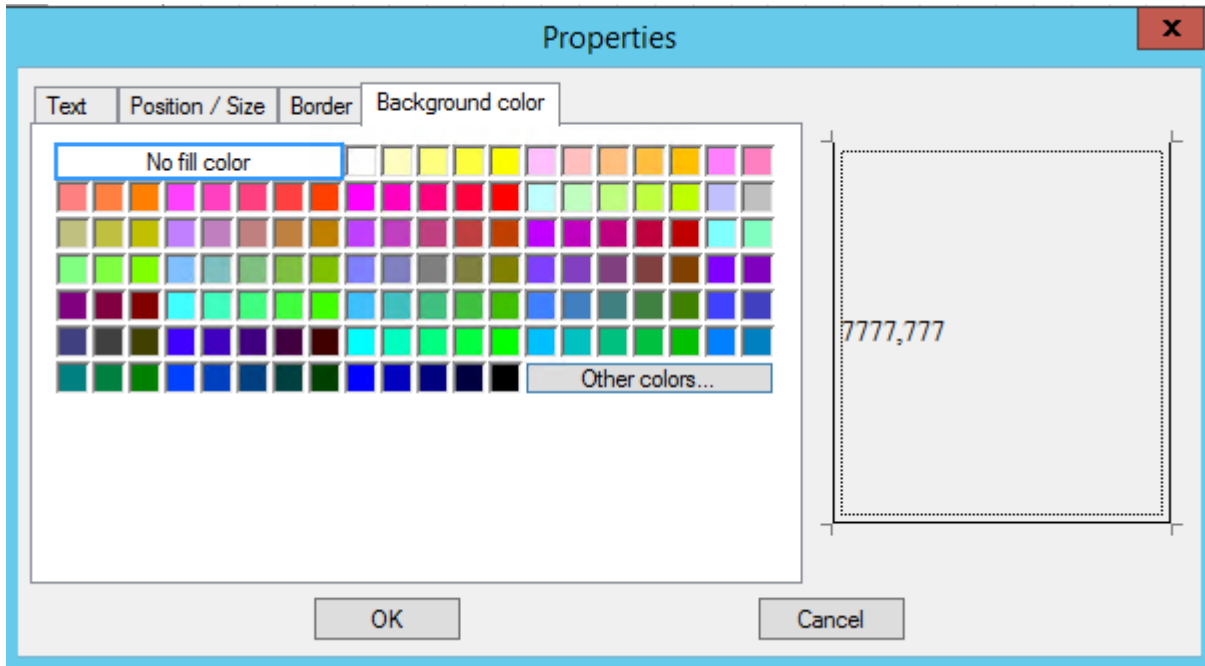
Gives access to all the parameters of the selected object.

For a field



The Select field to display button is used to select/modify the field :



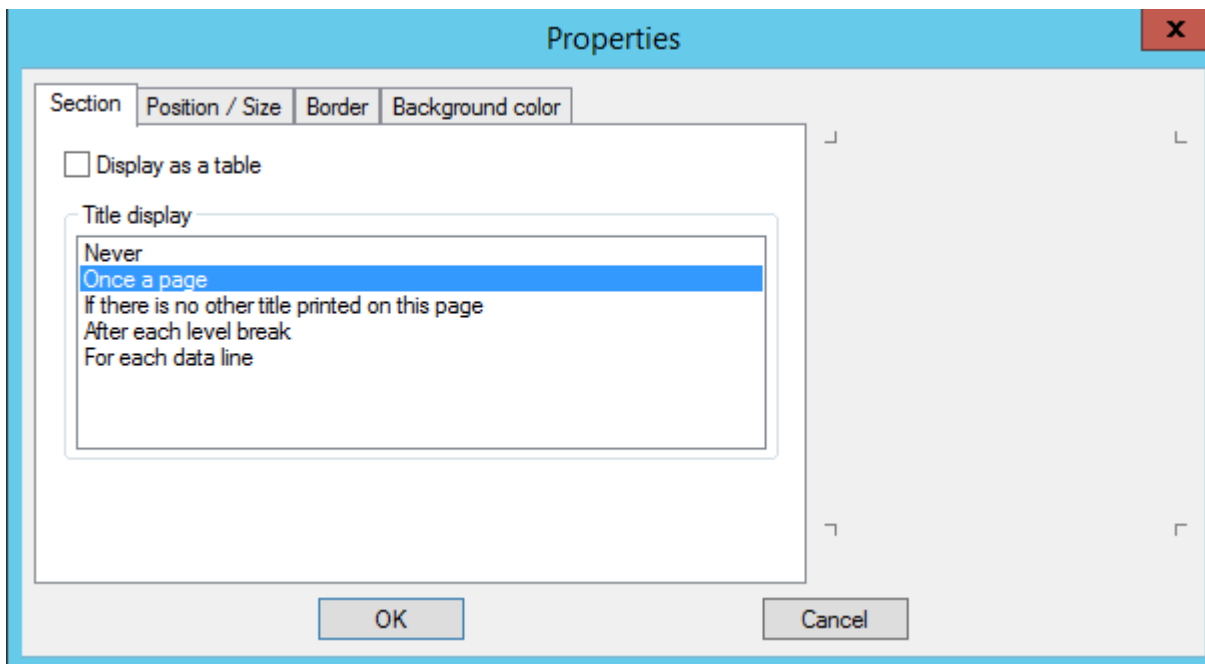


For a section

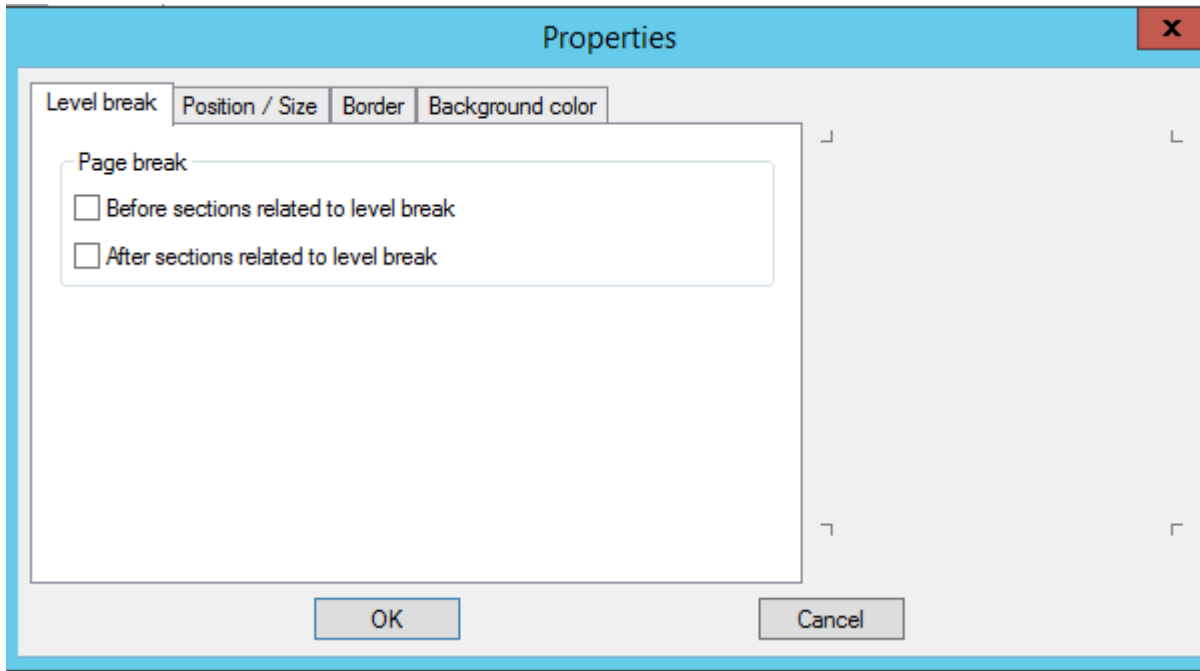
In the properties of a section, in addition to the classic Position/Size, Border and Background color tabs, there is the Section tab, which allows you to manage page breaks and titles display.

Allowed options depend on the section type.

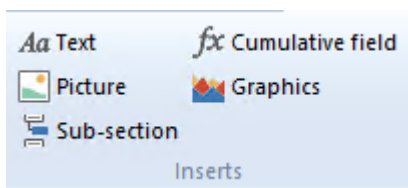
for Body section:



for Level break header:



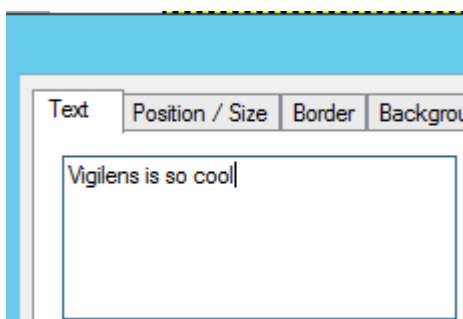
Inserts



Text

Aa Text Allows the addition of a static label on the report.

This type of object has the same properties as a field, except that the label is typed while fields are chosen in a list.

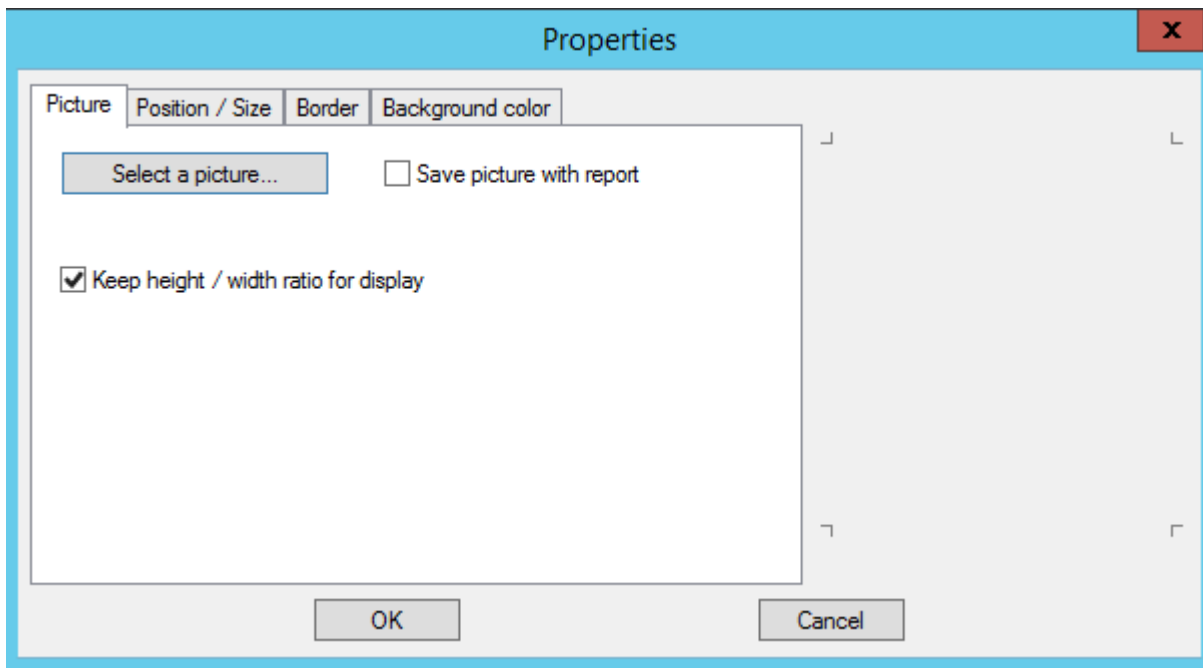


Picture

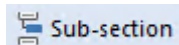


Allows you to add an image. This image can either be left on the server or incorporated into the

report. In the properties of a sub-section, in addition to the classic Position/Size, Border and Background tabs, there is a Picture tab, which gives access to the specific properties of this type of object.

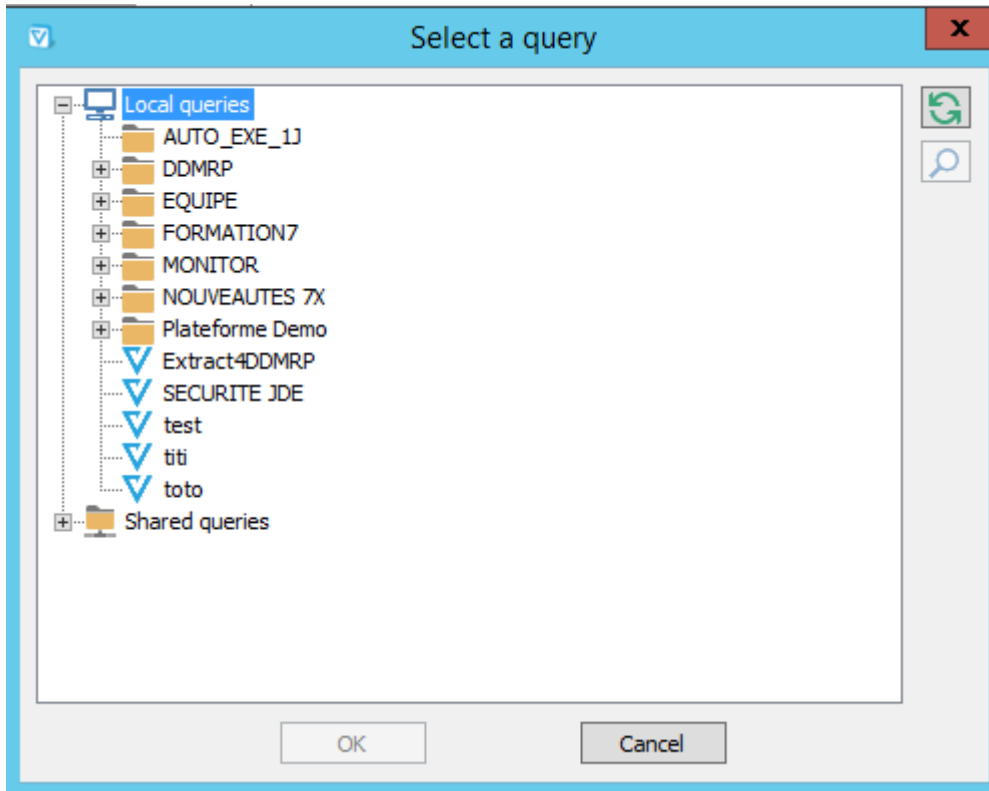


Sub-section

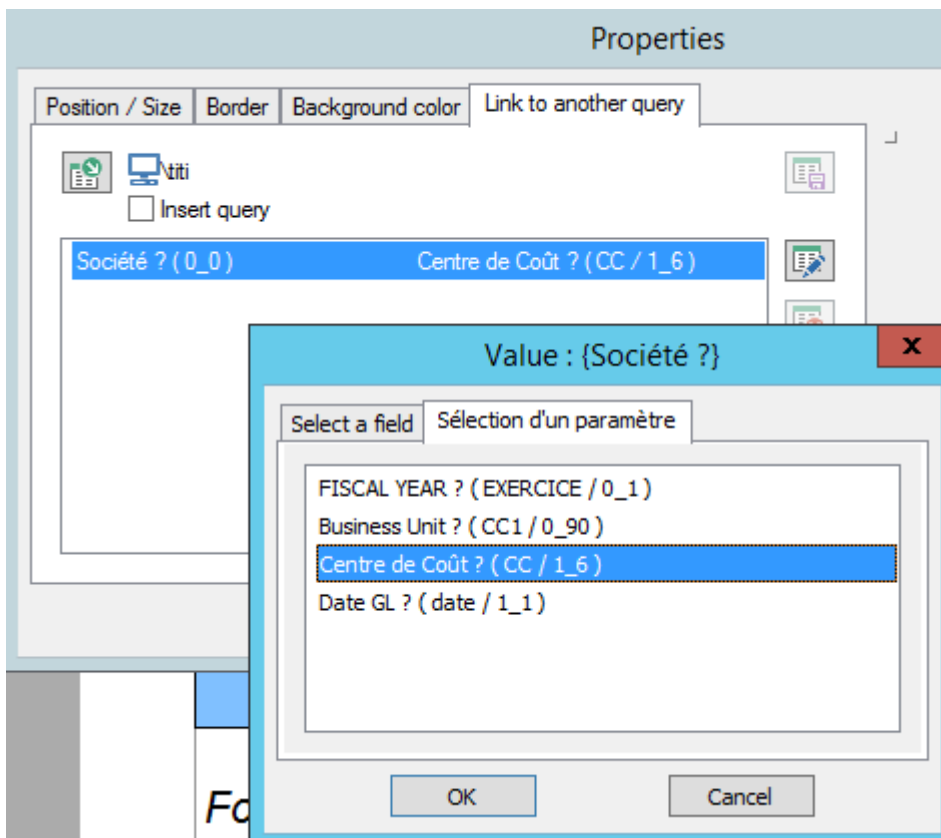


At the time of report construction, it is possible to add a sub-section with data from another report.

After clicking the Subsection button, a location on the report design must be selected. Vigilens then asks which query should be called.



In the properties of a sub-section, in addition to the classic Position/Size, Border and Background color tabs, there is the Link to Another Query tab. It allows you to change the query called by the sub-section and to specify the values of the parameters when calling this subquery.

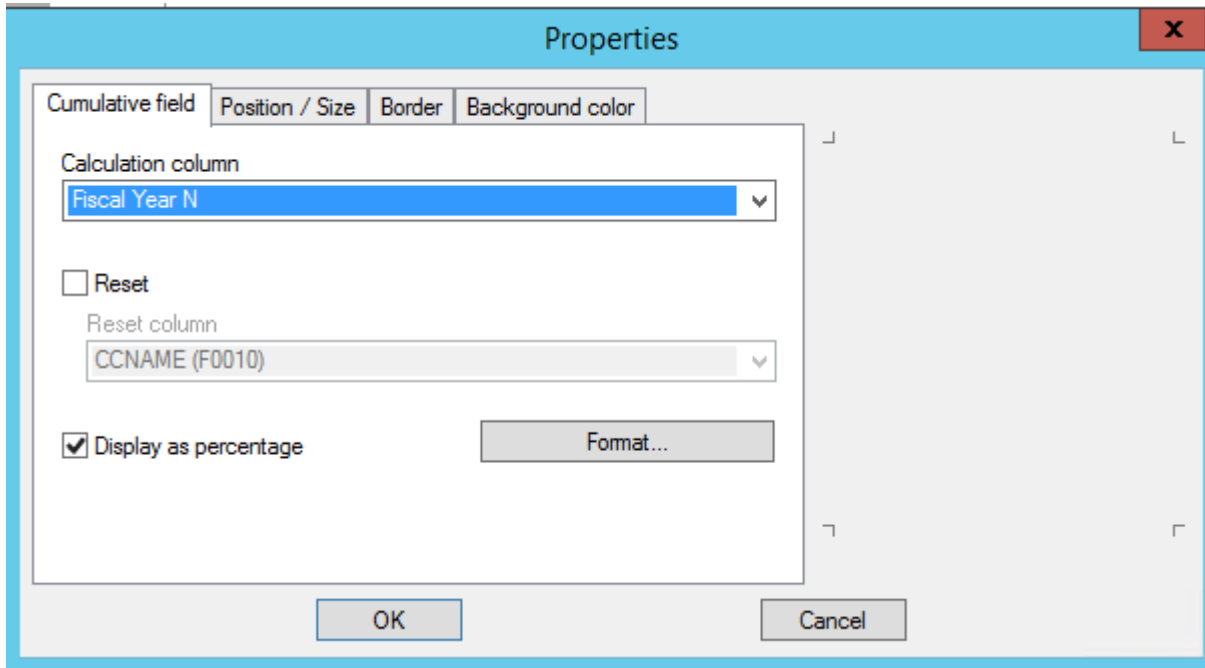


Cumulative field


Cumulative field

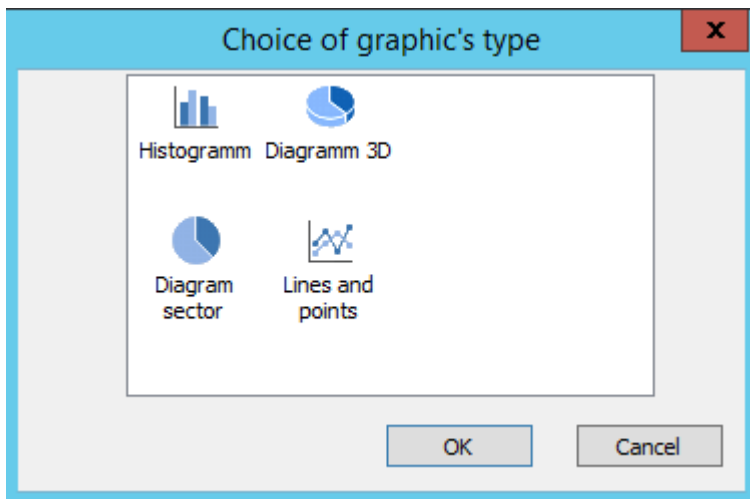
After clicking the Cumulate button, select a location on the report design.

In the properties of a sub-section, in addition to the classic Position/Size, Border and Background color tabs, there is the Cumulative field tab that allows you to specify the field that will be the object of the cumulation, as well as the break conditions that resets total amount to zero.



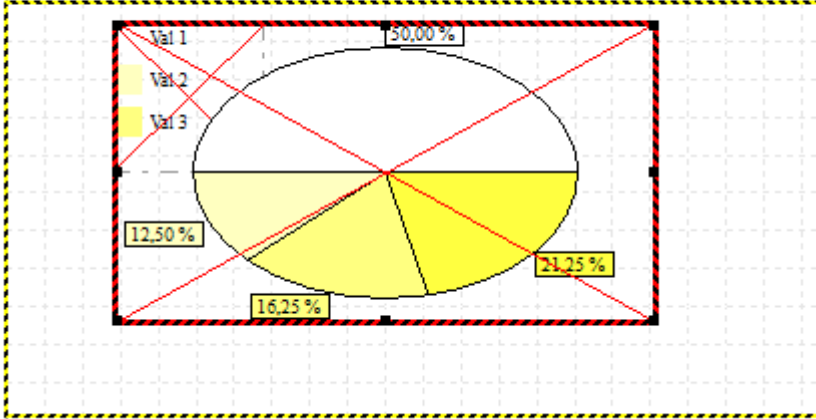
Graphics

After clicking on the  Graphics button, you have to choose a field of the report and then a data type.



A diagram symbolizes the location of the graph on the report.

Header : Level break for ABAN8 (F0101)



Sections

Display as Table

Copy from main body

Properies

#WORKINPROGRESS SYR

From: <https://vigilens.wiki/dokuwiki/> - Vigilens Reporting Knowledge Garden

Permanent link: https://vigilens.wiki/dokuwiki/doku.php?id=en:v8_0_0:designer:menus:accueil:nouvellerequete:editeurimpression:menus:composants:start&rev=1594212911

Last update: 2020/07/08 14:55

