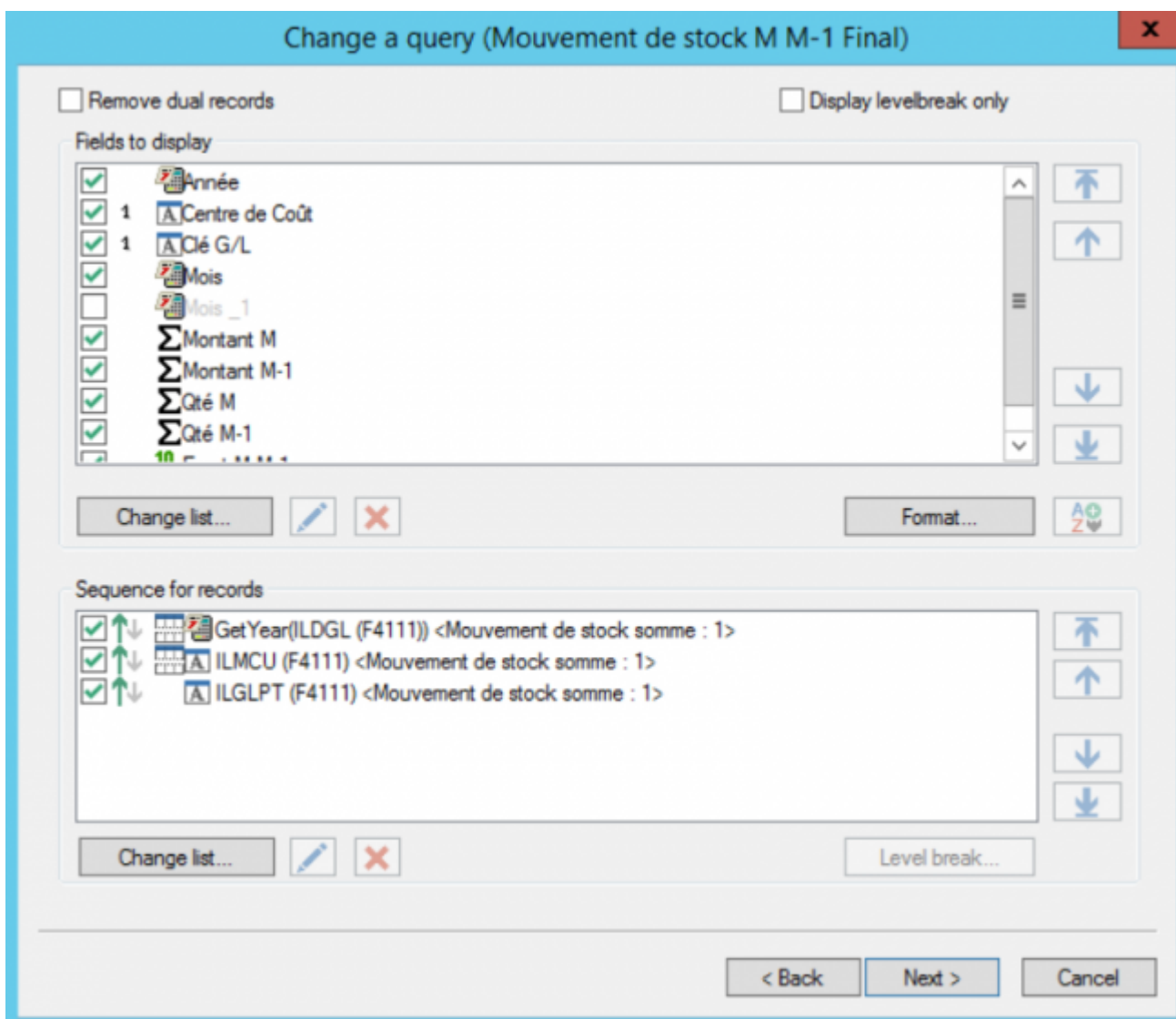


# Field Selection



This screen displays a list of all fields displayed, whether they come from a table, a field in a subquery, or a calculated field (operation, see [OPManage](#)).



Whether it is for fields to be edited or fields for sorting, the checkbox allows you to disable a line, which can be useful when designing or debugging the query.

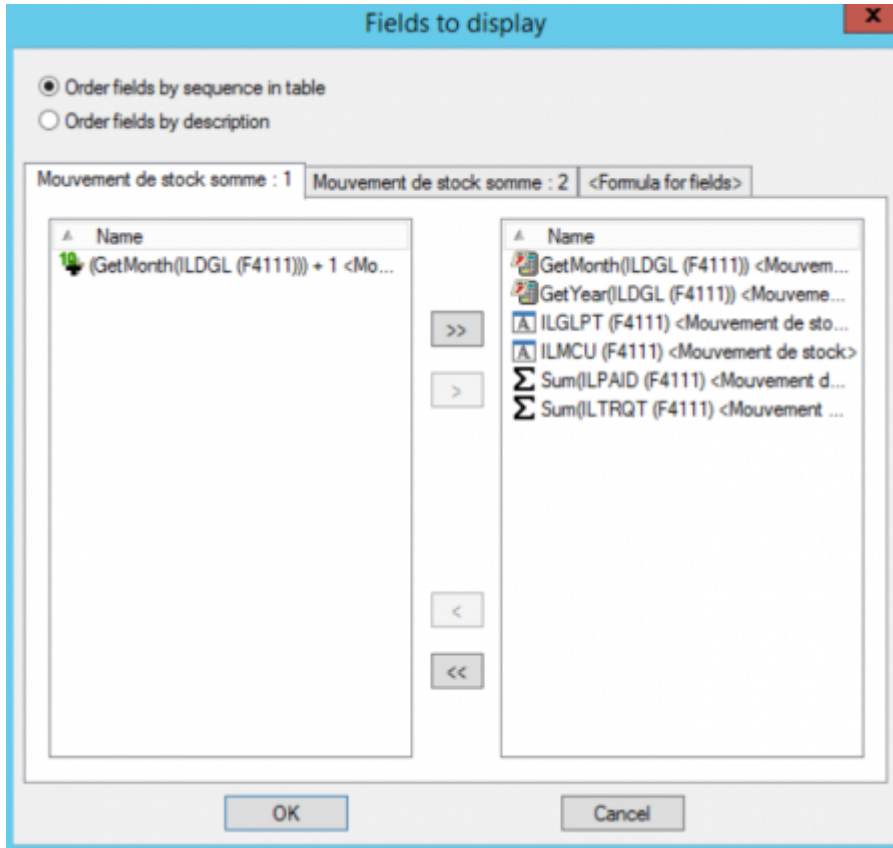


To rename a column, select the column to rename and press **F2**.

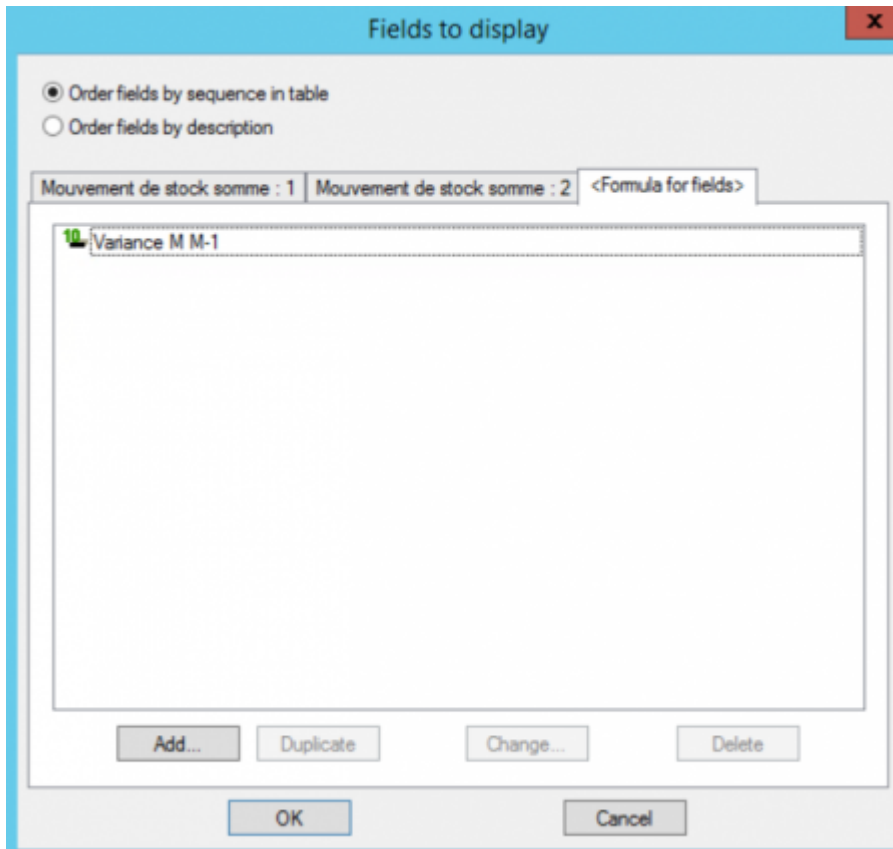
## Fields to be edited

### Selection

The wizard allows you to browse the query tables to select the fields to be returned.



An additional tab allows you to add calculated fields to the output, either operation on the fields or fixed values:

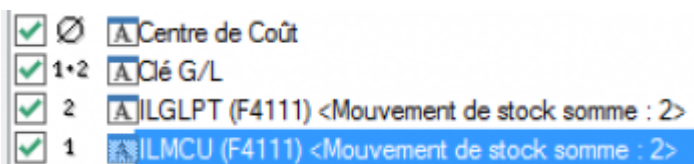


Use the right-hand arrows to change the order of the fields.

Unchecking the box at the beginning of the line makes the field concerned invisible in the output.

## Automatic labels

Some fields are configured to have their descriptions brought back automatically (they are preceded by  $\emptyset$ ) as additional fields in the report (see [DMManage](#)). Clicking between the checkbox and the field name scrolls through the following options in succession:



- 1: wording 1 only
- 2: wording 2 only
- 1 + 2: labelled 1 and 2 (for UDC tables)
- $\emptyset$  : no wording

Only for JDE databases, Vigilens manages the automatic display of descriptions for :

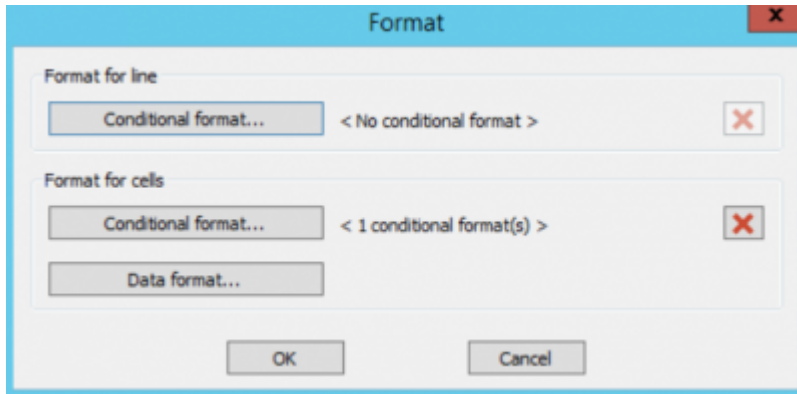


- fields controlled by a UDC table
- Third-party fields (AN8, SHAN, etc...)
- Items fields
- Company fields



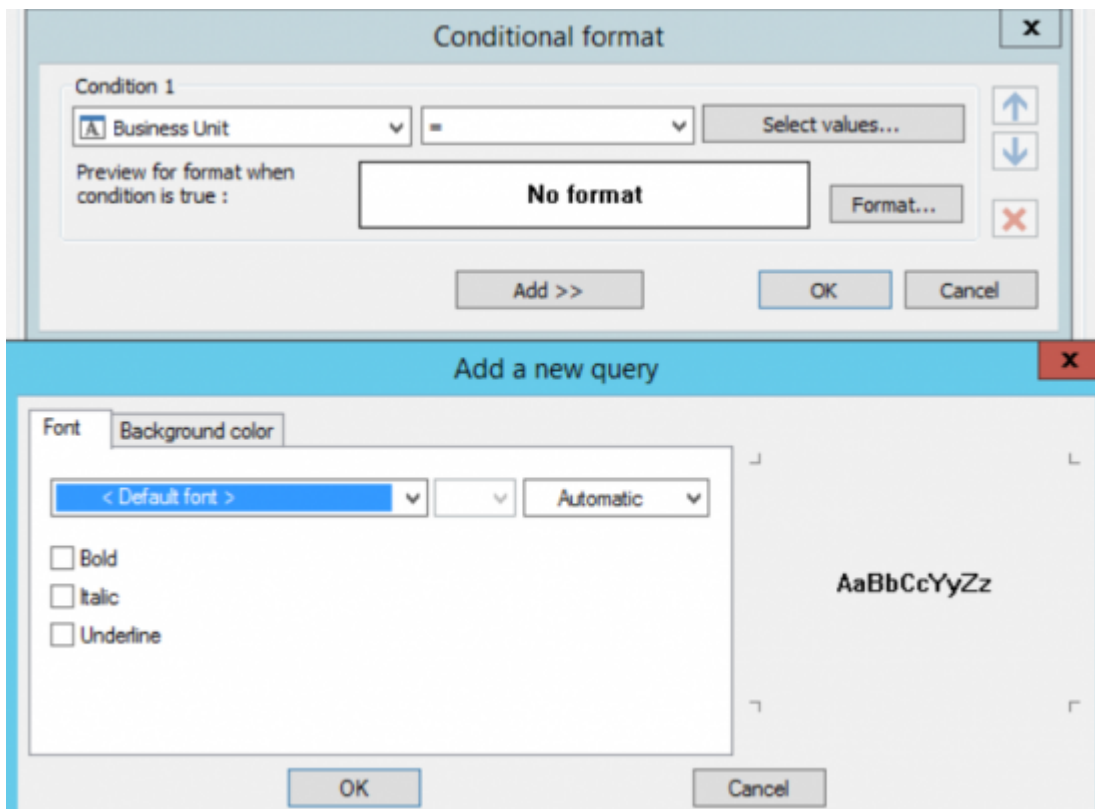
- The fields centers of cost

## Formatting



### At the line level

One or more conditional formats can be applied to a rendered line. All the columns of a row that satisfies the criterion will be formatted in this way.



### At the cell level

### Conditional Formatting

In this case, the formatting only concerns the column specified in the formatting criterion. The dialog screens are similar to those at the row level, except that if the field has automatic descriptions, a first dialog window proposes to apply the formatting not only to the field itself but also to its descriptions.

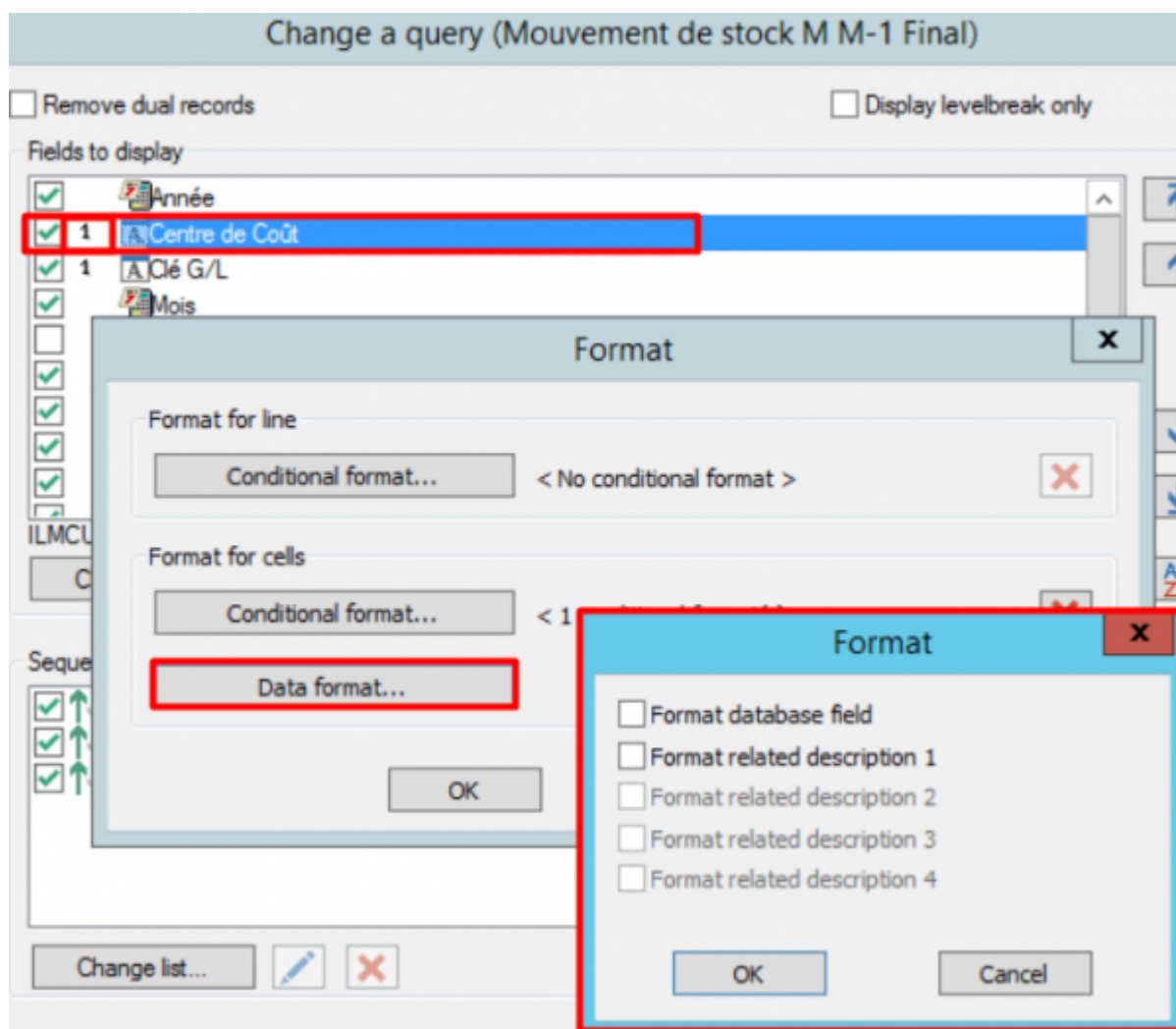
### Data Format

When you press the button Data Format, if this field has associated labels (JDE/World only), then a first dialog box asks if the formatting concerns :

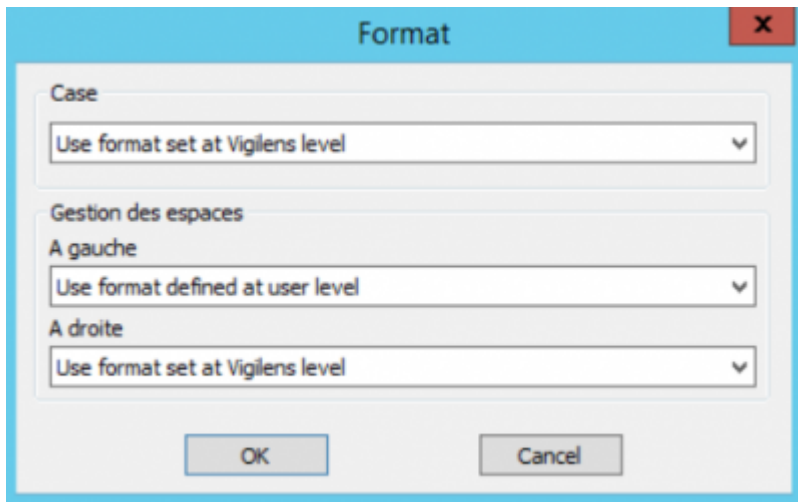
- the field itself
- the associated description 1
- the associated description 2



This window is not displayed if there is no associated description.



Here you can finely manage case and space management



The following values are possible for case:

- Use the format defined in Vigilens.
- Use the format defined at the user level.
- Do not change the case.
- Put all characters in lower case.
- Put the first character in uppercase.
- Capitalize all characters.

For spaces, either right or left :

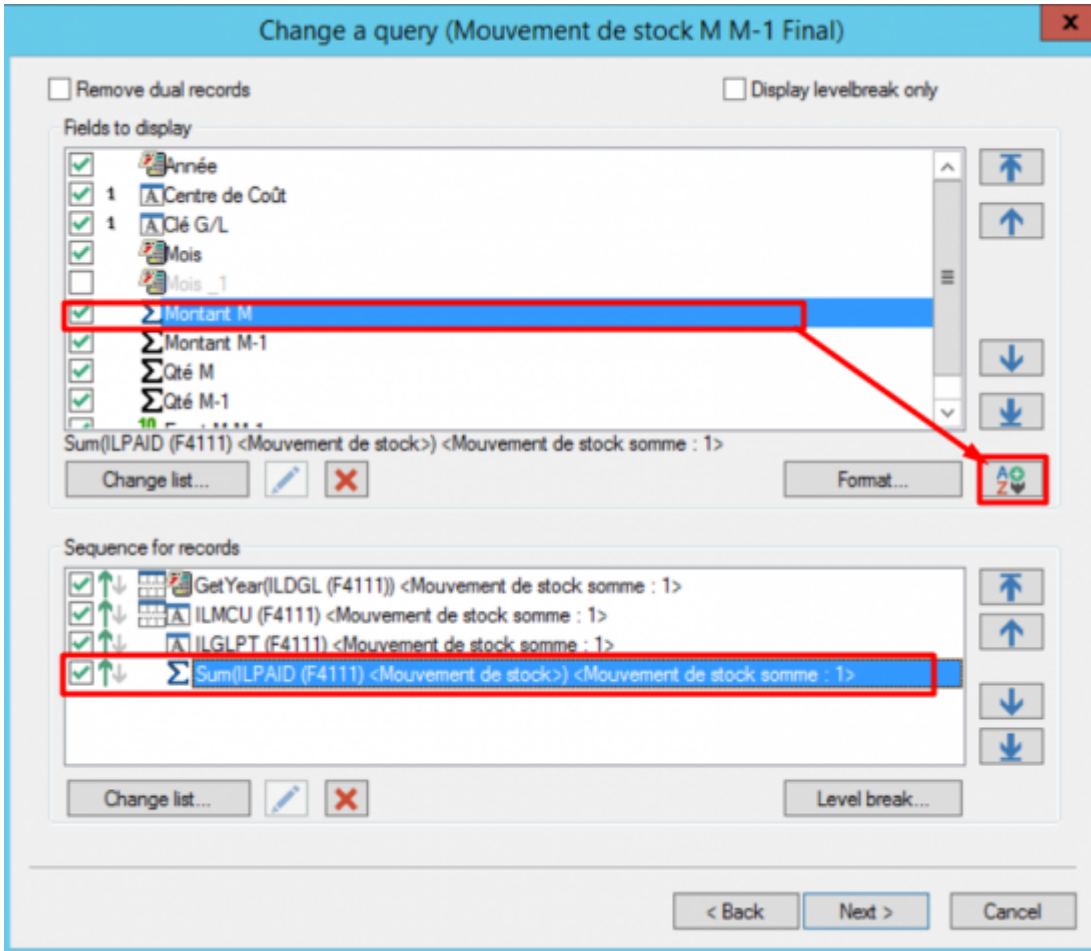
- Use the format defined in Vigilens.
- Use the format defined at the user level.
- Delete spaces.
- Keep the spaces.

## Order of the records

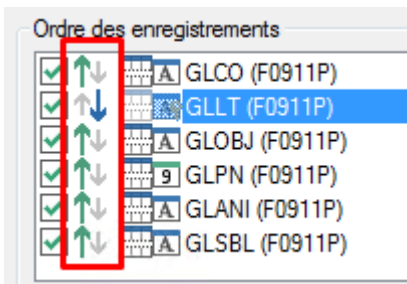
### Selection

To add sort fields, 2 possibilities :

- use the add button to choose a field among the tables, subqueries or calculated fields
- Select a field already present in the list Fields to edit and click on the button A+Z↓.



The green-up or blue down arrow indicates whether the sort on this field is ascending or descending.

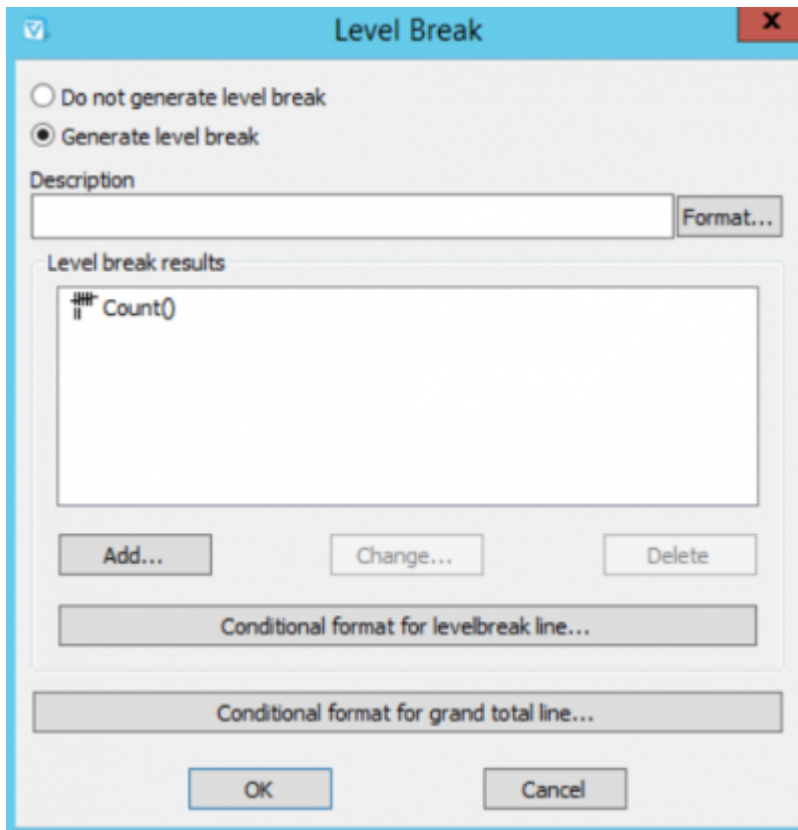


The arrows on the right allow you to change the priority of the fields when sorting.



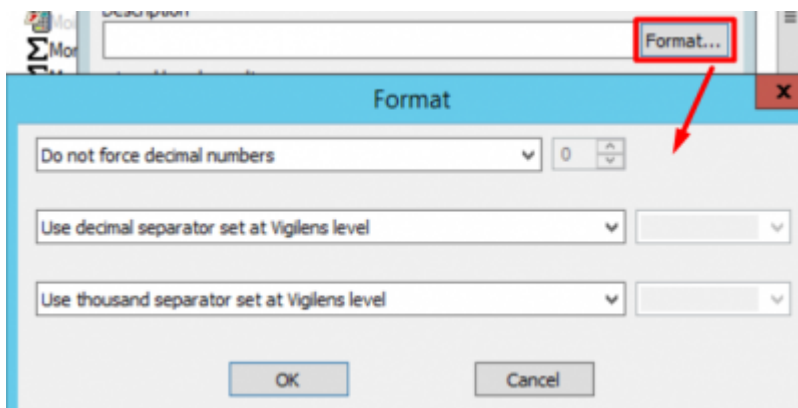
### Level Break

The button Level break allows you to specify whether or not a sort field is also a broken field.



## Description

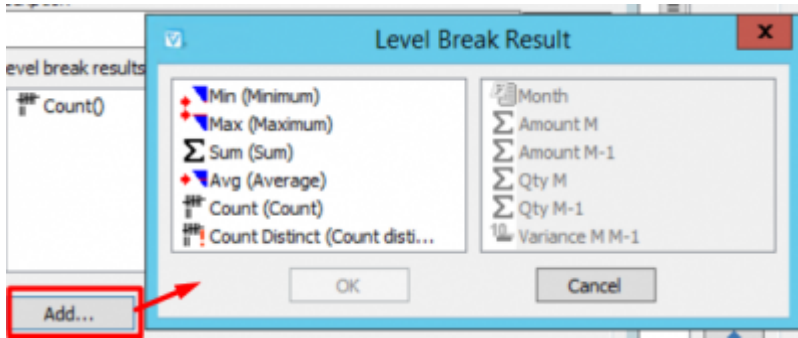
The Description is what will be displayed on the report at the time of the break. This title can be formatted (see [Data format](#))



## Breakup Results

At each break, operations such as subtotals, record count, average, etc. can be added.

For each operator, there is a list of fields on the right where the operation can be applied.



### Conditional Breakline Shaping

Allows you to associate conditional formatting to the break line.

### Conditional formatting for the generated total row

Allows you to associate conditional formatting to the total break line.

From: <https://vigilens.wiki/dokuwiki/> - **Vigilens Reporting Knowledge Garden**

Permanent link: [https://vigilens.wiki/dokuwiki/doku.php?id=en:v8\\_0\\_0:designer:menus:accueil:nouvelrequete:champs](https://vigilens.wiki/dokuwiki/doku.php?id=en:v8_0_0:designer:menus:accueil:nouvelrequete:champs)

Last update: 2020/07/09 14:56

