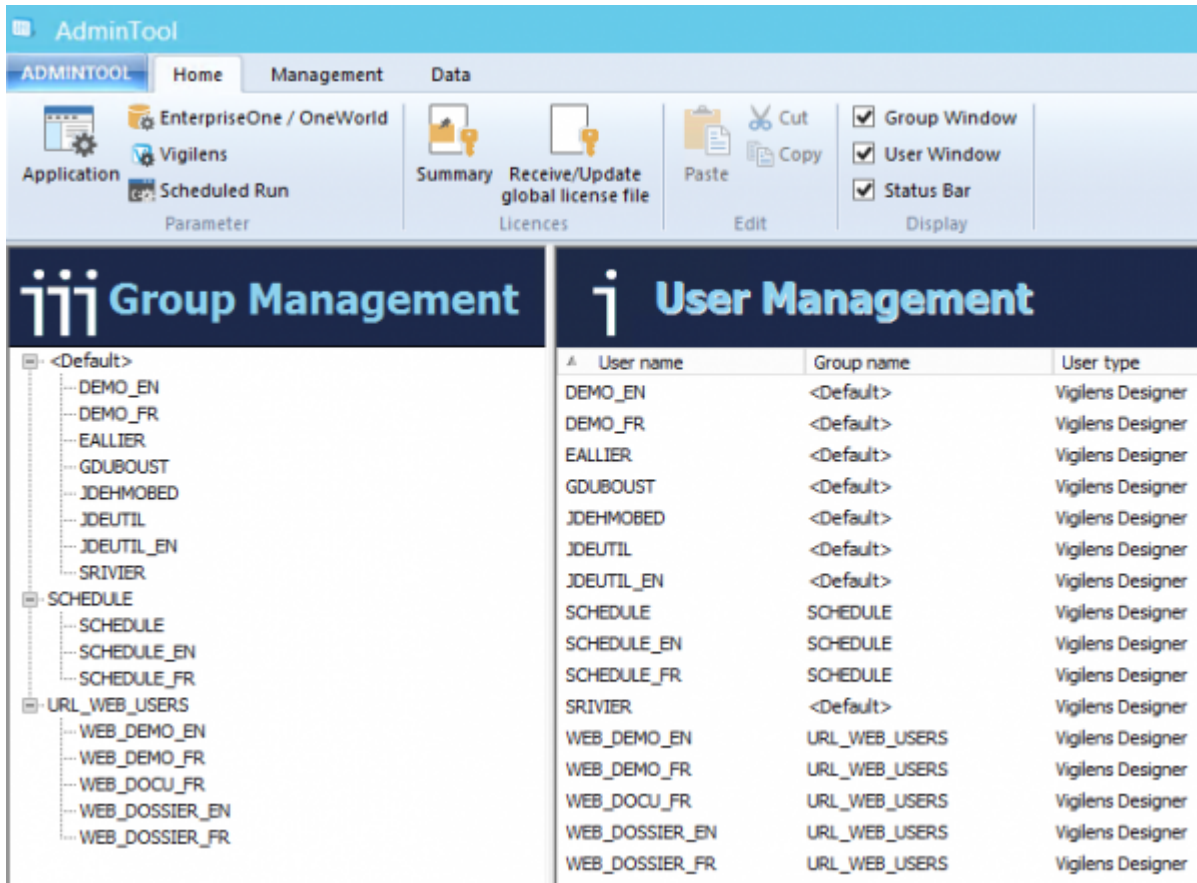




# Admintool

## Introduction

The AdminTool is at the heart of the product configuration. It allows you to define data sources, users, and security.

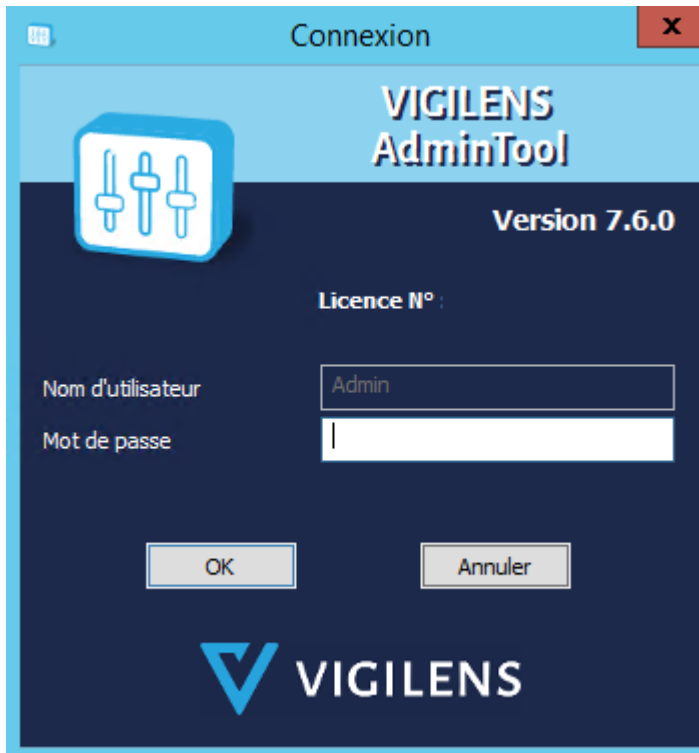


## Connection

The AdminTool can be run

- by windows menu, search string AdminTool
- by .exe : <Vigilens install directory>\UsrAdm.exe

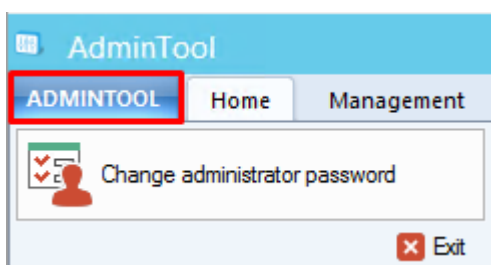
The connection is necessarily made with the Admin user. By default the password is blank.



It is not possible to have multiple simultaneous connections to the AdminTool application.

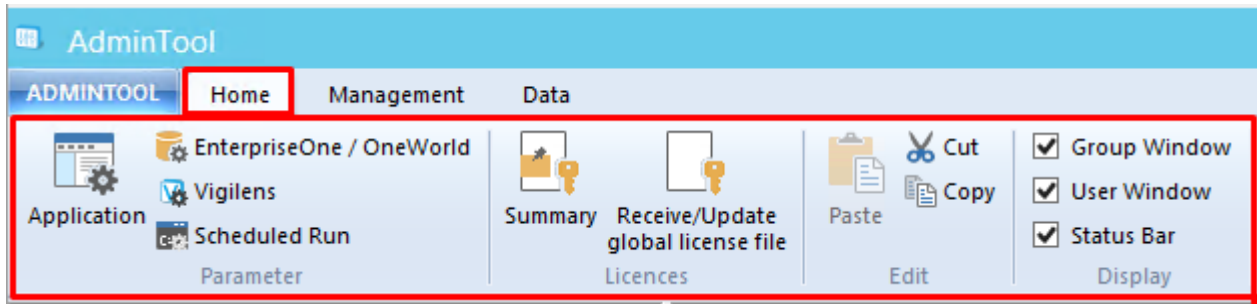
## Menus

### AdminTool Menu



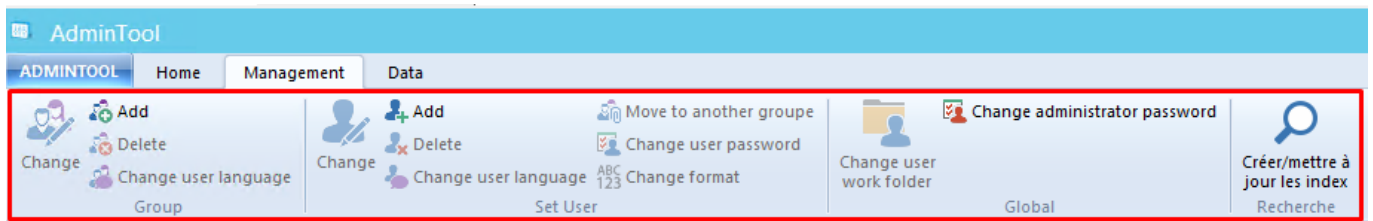
The tab ADMINTOOL at the top left allows you to change the administrator password.

### Home



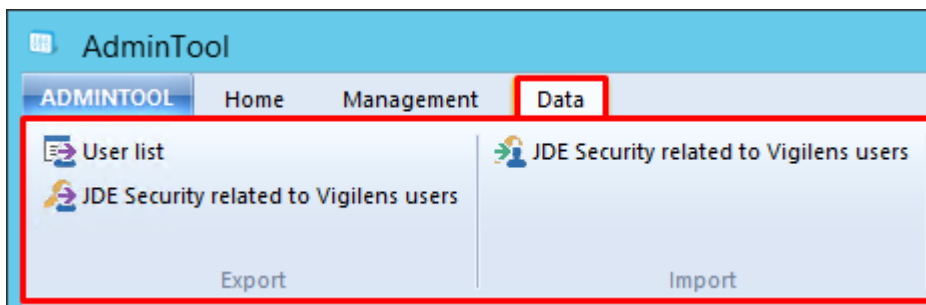
This menu gathers most of the general parameters of Vigilens Reporting.

## Management



This menu lets you manage users and groups. It is used in conjunction with the **User Management** and **Group Management** windows.

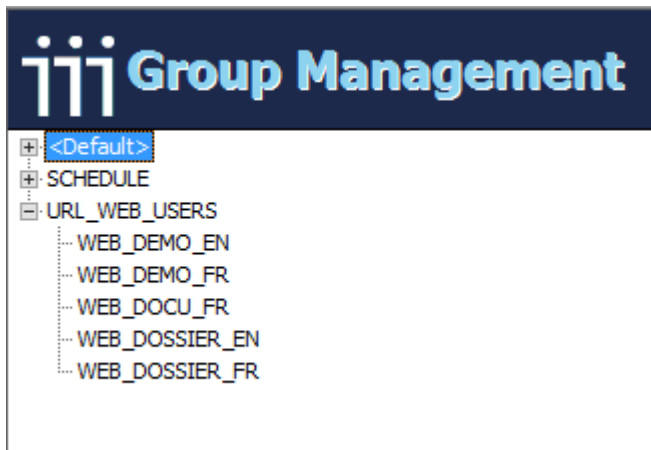
## Data



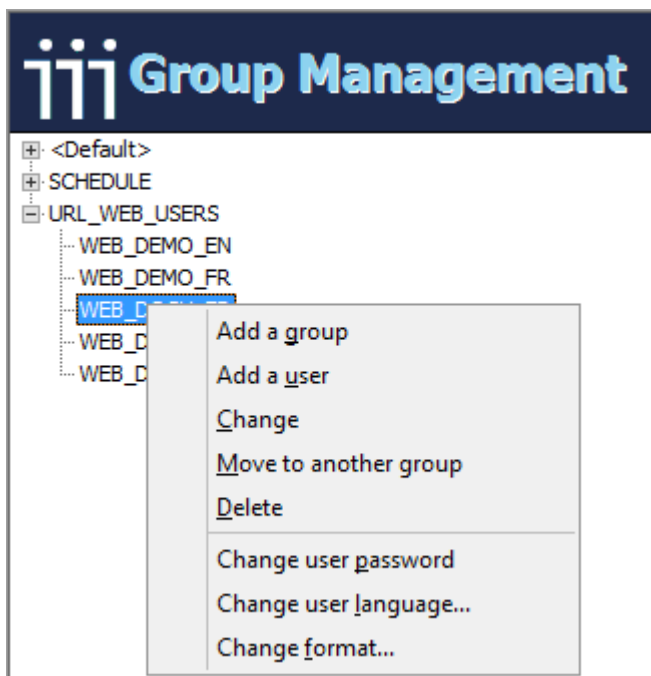
This menu allows you to export or import data in CSV format:

- User export.
- Export of user security.
- Import user security.

## Groups management window



- This panel allows you to view which group a user belongs to. A user belongs to only one group.
- Group membership can be changed by dragging and dropping a user to a target group.
- This window is used in conjunction with the [Management menu](#).
- A right click opens a contextual menu with the actions of the Management Menu.



## Users management window

# User Management

▲ User name	Group name	User type
DEMO_EN	<Default>	Vigilens Designer
DEMO_FR	<Default>	Vigilens Designer
EALLIER	<Default>	Vigilens Designer
GDUBOUST	<Default>	Vigilens Designer
JDEHMOBED	<Default>	Vigilens Designer
JDEUTIL	<Default>	Vigilens Designer
JDEUTIL_EN	<Default>	Vigilens Designer
SCHEDULE	SCHEDULE	Vigilens Designer
SCHEDULE_EN	SCHEDULE	Vigilens Designer
SCHEDULE_FR	SCHEDULE	Vigilens Designer
SRIVIER	<Default>	Vigilens Designer
WEB_DEMO_EN	URL_WEB_USERS	Vigilens Designer
WEB_DEMO_FR	URL_WEB_USERS	Vigilens Designer
WEB_DOCU_FR	URL_WEB_USERS	Vigilens Designer
WEB_DOSSIER_EN	URL_WEB_USERS	Vigilens Designer
WEB_DOSSIER_FR	URL_WEB_USERS	Vigilens Designer

- This panel allows you to view the list of all users, the unique group to which each user belongs, and the security profile.
- This window is used in conjunction with the [Management menu](#).

From: <https://vigilens.wiki/dokuwiki/> - **Vigilens Reporting Knowledge Garden**

Permanent link: [https://vigilens.wiki/dokuwiki/doku.php?id=en:v8\\_0\\_0:admintool:start&rev=1595415909](https://vigilens.wiki/dokuwiki/doku.php?id=en:v8_0_0:admintool:start&rev=1595415909)

Last update: **2020/07/22 13:05**

