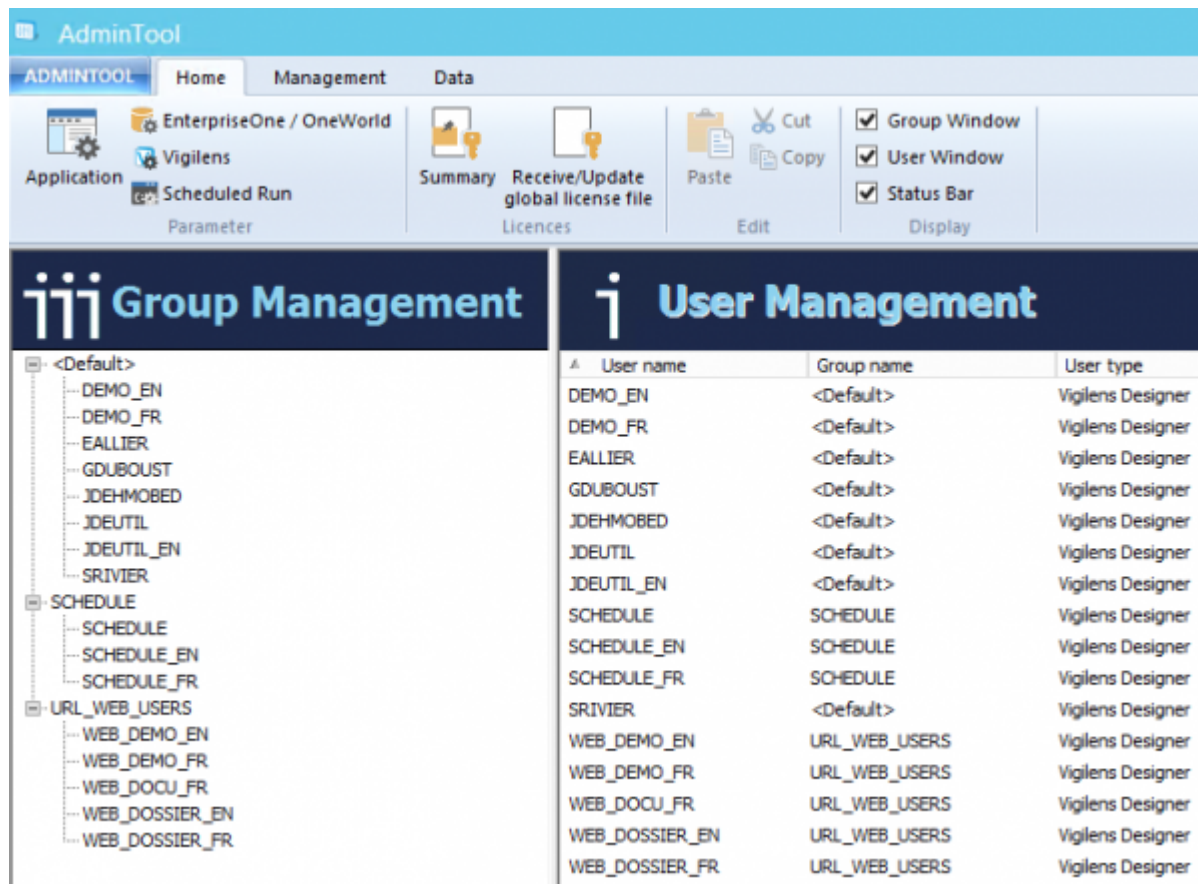




Admintool

Introduction

The AdminTool is at the heart of the product configuration. It allows you to define data sources, users, and security.

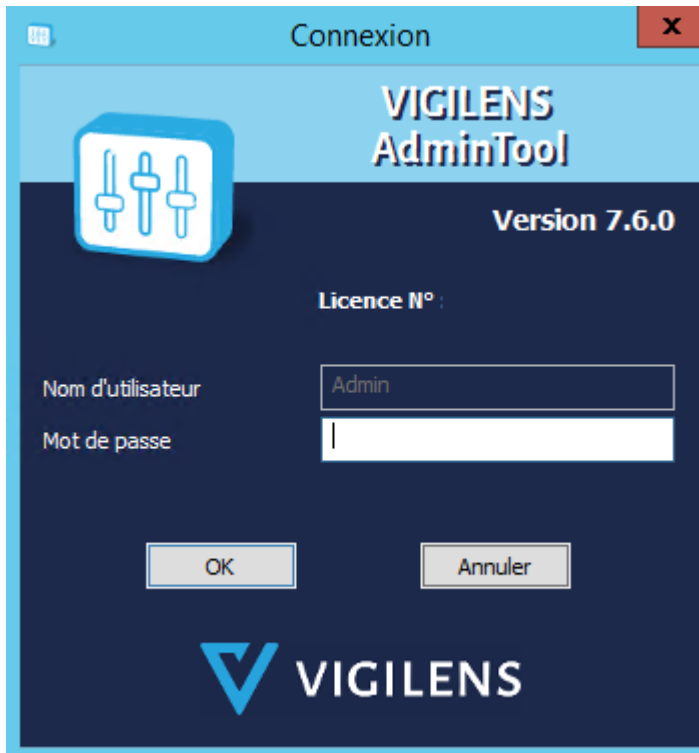


Connection

The AdminTool can be run

- by windows menu, search string AdminTool
- by .exe : <Vigilens install directory>\UsrAdm.exe

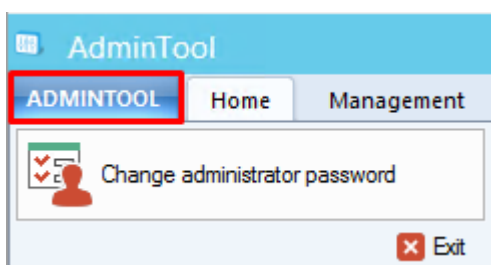
The connection is necessarily made with the Admin user. By default the password is blank.



It is not possible to have multiple simultaneous connections to the AdminTool application.

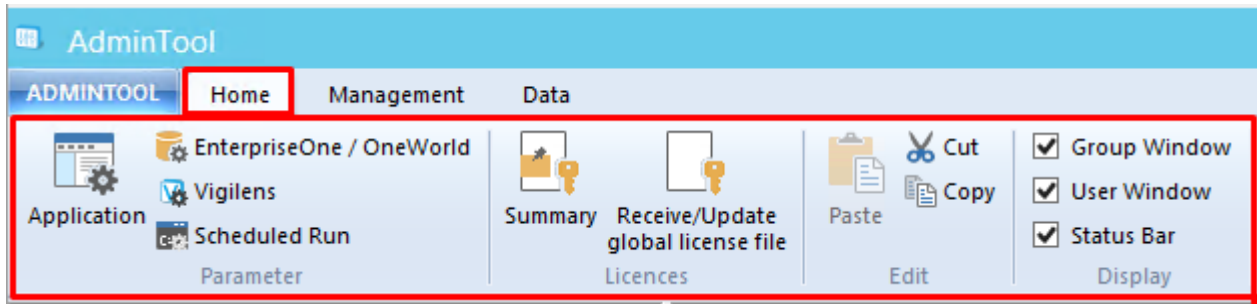
Menus

AdminTool Menu



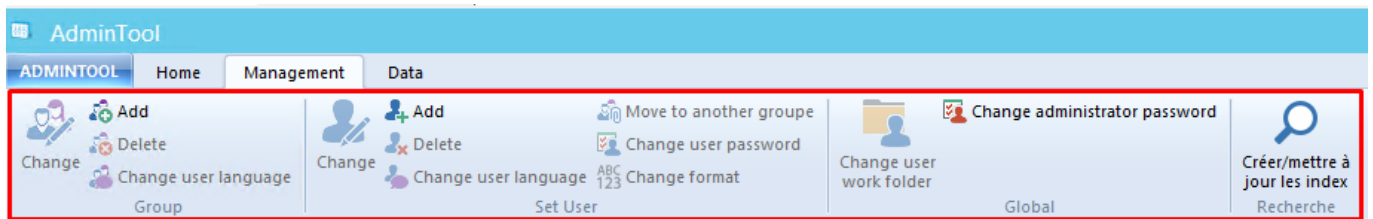
The tab ADMINTOOL at the top left allows you to change the administrator password.

Home



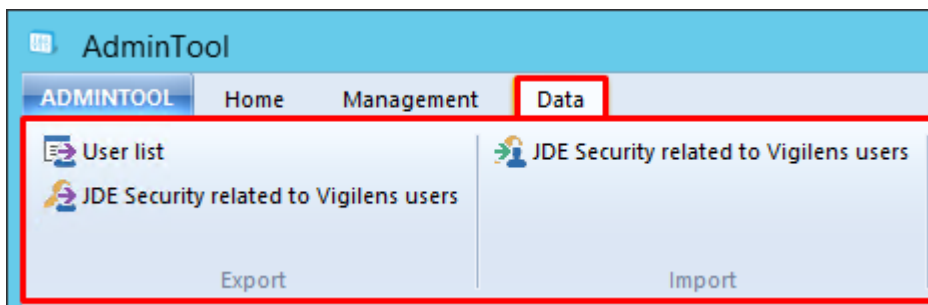
This menu gathers most of the general parameters of Vigilens Reporting.

Management



This menu lets you manage users and groups. It is used in conjunction with the **User Management** and **Group Management** windows.

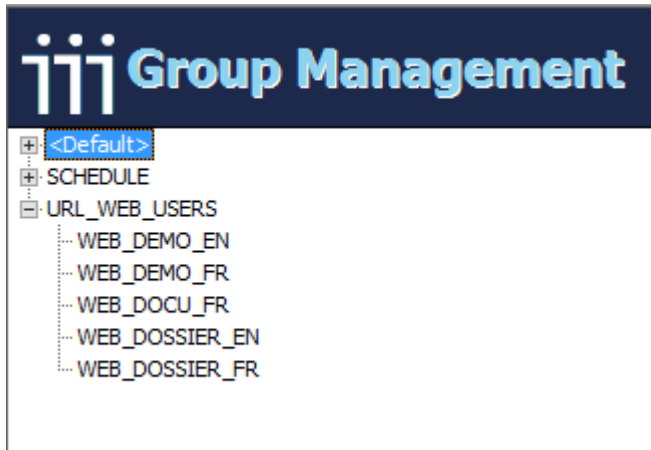
Data



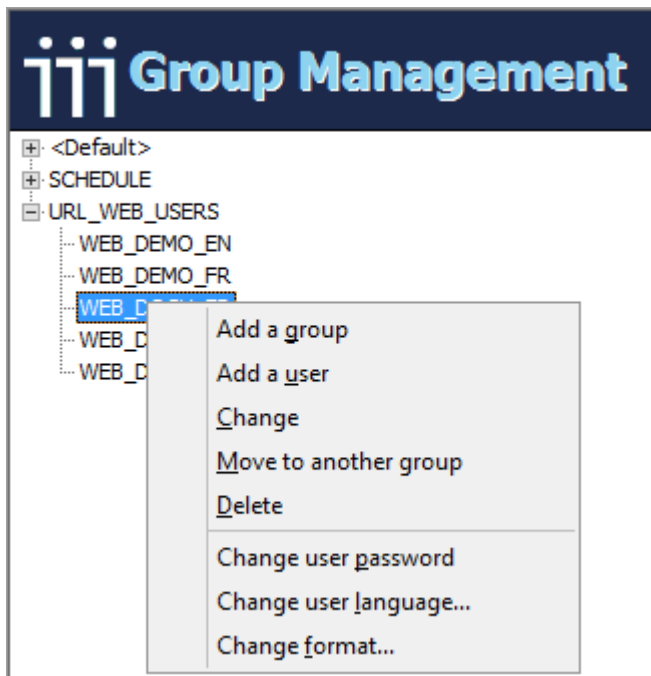
This menu allows you to export or import data in CSV format:

- User export.
- Export of user security.
- Import user security.

Groups management window



- This panel allows you to view which group a user belongs to. A user belongs to only one group.
- Group membership can be changed by dragging and dropping a user to a target group.
- This window is used in conjunction with the [Management menu](#).
- A right click opens a contextual menu with the actions of the Management Menu.



Users management window

User Management

▲ User name	Group name	User type
DEMO_EN	<Default>	Vigilens Designer
DEMO_FR	<Default>	Vigilens Designer
EALLIER	<Default>	Vigilens Designer
GDUBOUST	<Default>	Vigilens Designer
JDEHMOBED	<Default>	Vigilens Designer
JDEUTIL	<Default>	Vigilens Designer
JDEUTIL_EN	<Default>	Vigilens Designer
SCHEDULE	SCHEDULE	Vigilens Designer
SCHEDULE_EN	SCHEDULE	Vigilens Designer
SCHEDULE_FR	SCHEDULE	Vigilens Designer
SRIVIER	<Default>	Vigilens Designer
WEB_DEMO_EN	URL_WEB_USERS	Vigilens Designer
WEB_DEMO_FR	URL_WEB_USERS	Vigilens Designer
WEB_DOCU_FR	URL_WEB_USERS	Vigilens Designer
WEB_DOSSIER_EN	URL_WEB_USERS	Vigilens Designer
WEB_DOSSIER_FR	URL_WEB_USERS	Vigilens Designer

- This panel allows you to view the list of all users, the unique group to which each user belongs, and the security profile.
- This window is used in conjunction with the [Management menu](#).

From: <https://vigilens.wiki/dokuwiki/> - **Vigilens Reporting Knowledge Garden**

Permanent link: https://vigilens.wiki/dokuwiki/doku.php?id=en:v8_0_0:admintool:start&rev=1595415858

Last update: **2020/07/22 13:04**

