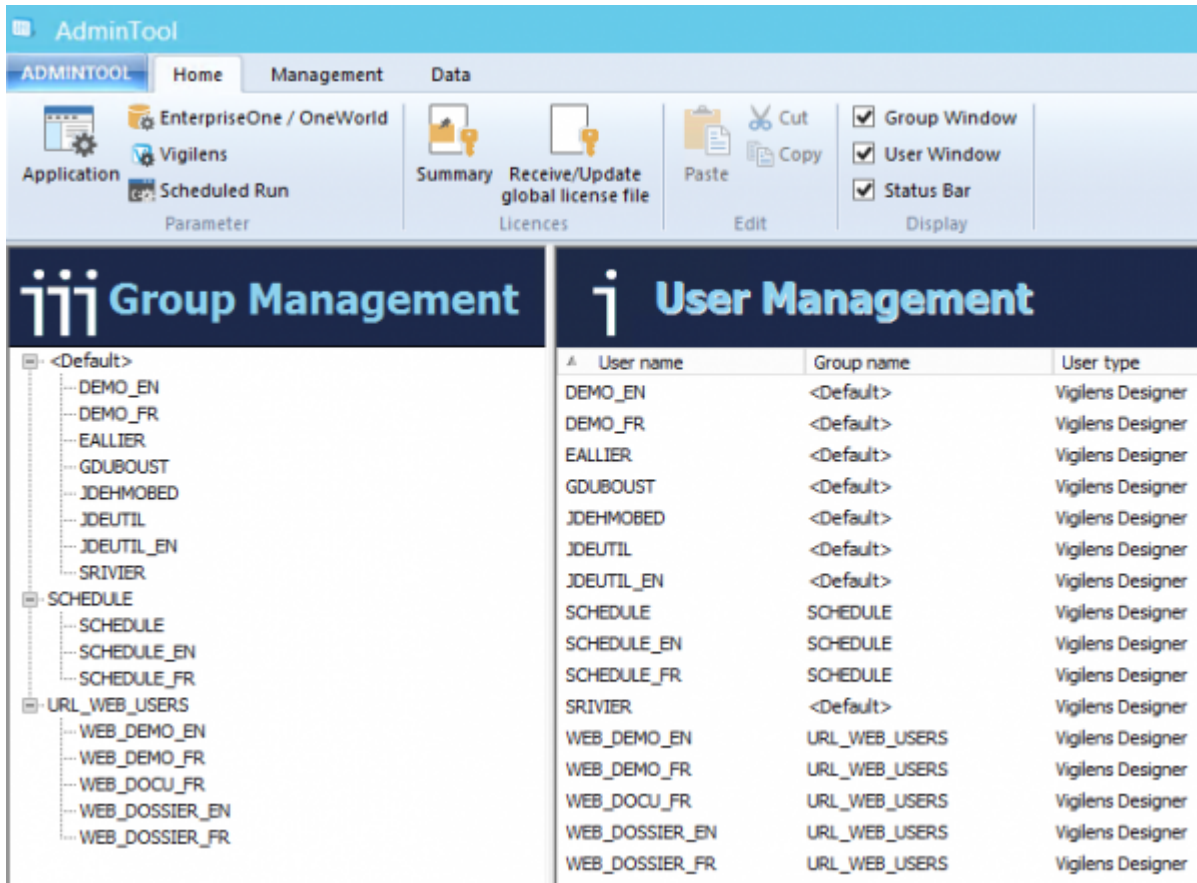




# Admintool

## Introduction

The AdminTool is at the heart of the product configuration. It allows you to define data sources, users, and security.



## Connection

The AdminTool can be run

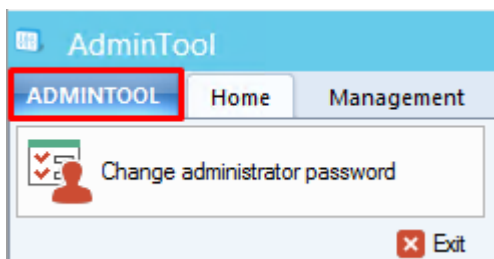
- by windows menu, search string AdminTool
- by .exe : <Vigilens install directory>\UsrAdm.exe

The connection is necessarily made with the Admin user. By default the password is blank.



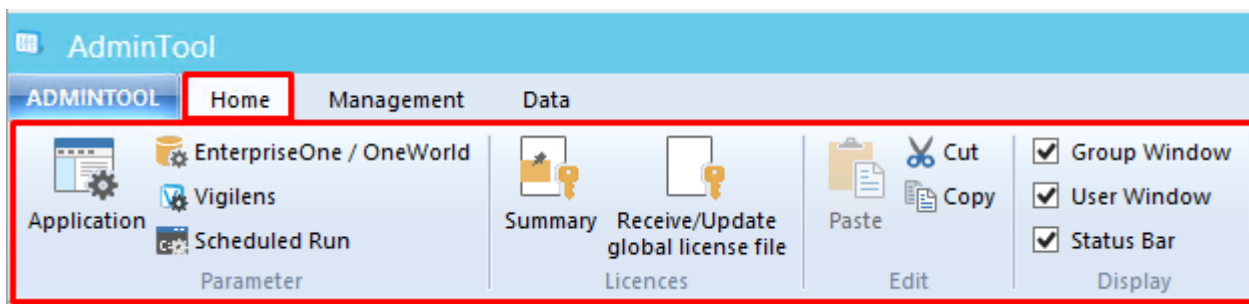
## Menus

### AdminTool Menu



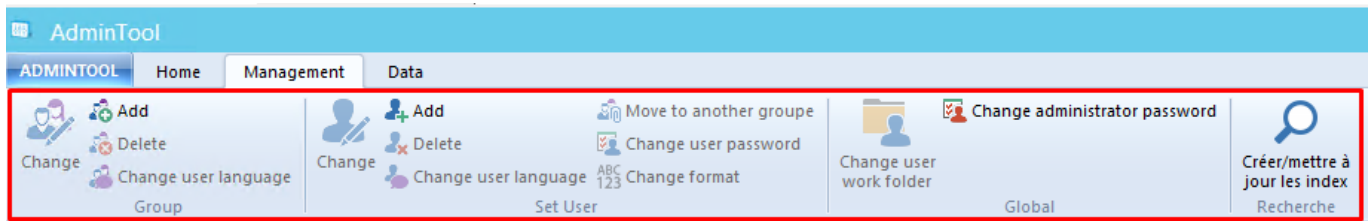
The tab ADMINTOOL at the top left allows you to change the administrator password.

### Accueil



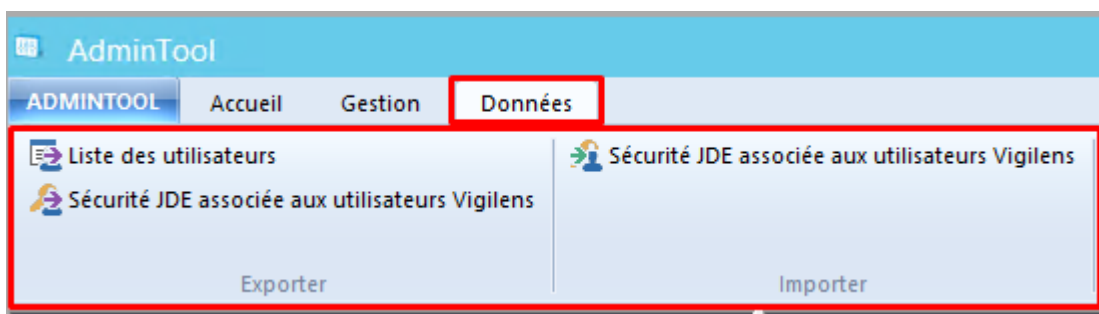
This menu gathers most of the general parameters of Vigilens Reporting.

## Management



This menu lets you manage users and groups. It is used in conjunction with the **User Management** and **Group Management** windows.

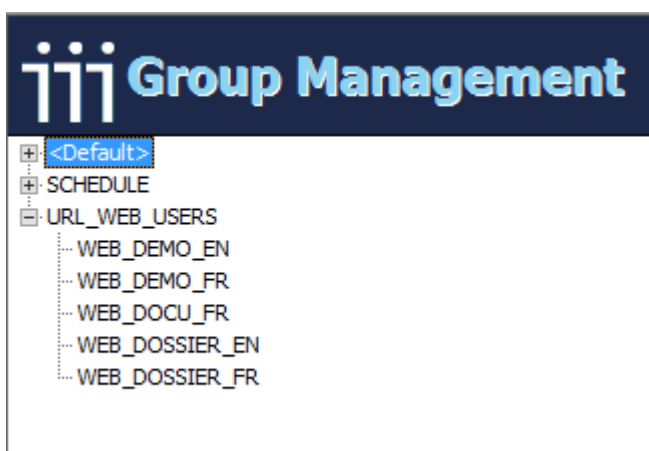
## Données



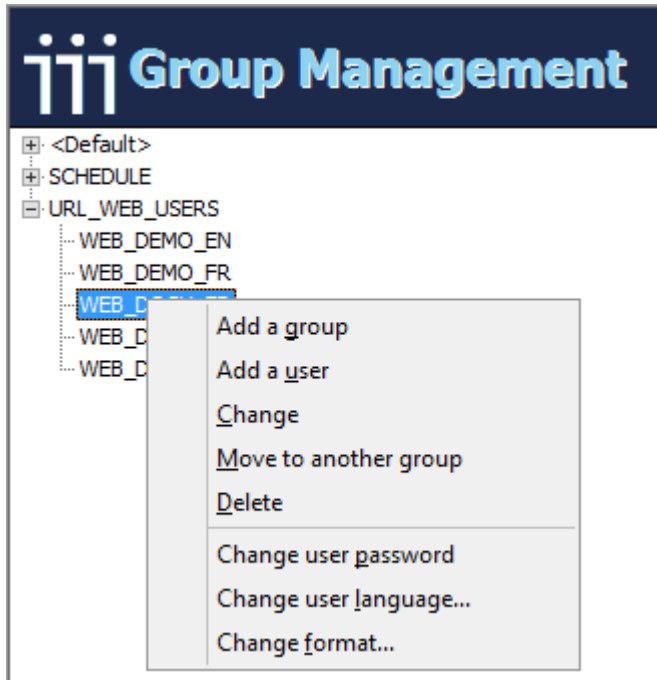
Ce menu permet d'exporter ou d'importer des données au format CSV :

- Export des utilisateurs.
- Export des sécurités utilisateurs.
- Import des sécurités utilisateurs.

## Groups management window



- This panel allows you to view which group a user belongs to. A user belongs to only one group.
- Group membership can be changed by dragging and dropping a user to a target group.
- This window is used in conjunction with the [Management menu](#).
- A right click opens a contextual menu with the actions of the Management Menu.



## Users management window

The screenshot shows the 'User Management' interface. It features a table with the following columns: User name, Group name, and User type. The table lists 18 users and their associated groups and user types.

User name	Group name	User type
DEMO_EN	<Default>	Vigilens Designer
DEMO_FR	<Default>	Vigilens Designer
EALLIER	<Default>	Vigilens Designer
GDUBOUST	<Default>	Vigilens Designer
JDEHMOBED	<Default>	Vigilens Designer
JDEUTIL	<Default>	Vigilens Designer
JDEUTIL_EN	<Default>	Vigilens Designer
SCHEDULE	SCHEDULE	Vigilens Designer
SCHEDULE_EN	SCHEDULE	Vigilens Designer
SCHEDULE_FR	SCHEDULE	Vigilens Designer
SRIVIER	<Default>	Vigilens Designer
WEB_DEMO_EN	URL_WEB_USERS	Vigilens Designer
WEB_DEMO_FR	URL_WEB_USERS	Vigilens Designer
WEB_DOCU_FR	URL_WEB_USERS	Vigilens Designer
WEB_DOSSIER_EN	URL_WEB_USERS	Vigilens Designer
WEB_DOSSIER_FR	URL_WEB_USERS	Vigilens Designer

- This panel allows you to view the list of all users, the unique group to which each user belongs, and the security profile.
- This window is used in conjunction with the [Management menu](#).

From:

<https://vigilens.wiki/dokuwiki/> - **Vigilens Reporting Knowledge Garden**

Permanent link:

[https://vigilens.wiki/dokuwiki/doku.php?id=en:v8\\_0\\_0:admintool:start&rev=1594389902](https://vigilens.wiki/dokuwiki/doku.php?id=en:v8_0_0:admintool:start&rev=1594389902)

Last update: **2020/07/10 16:05**

