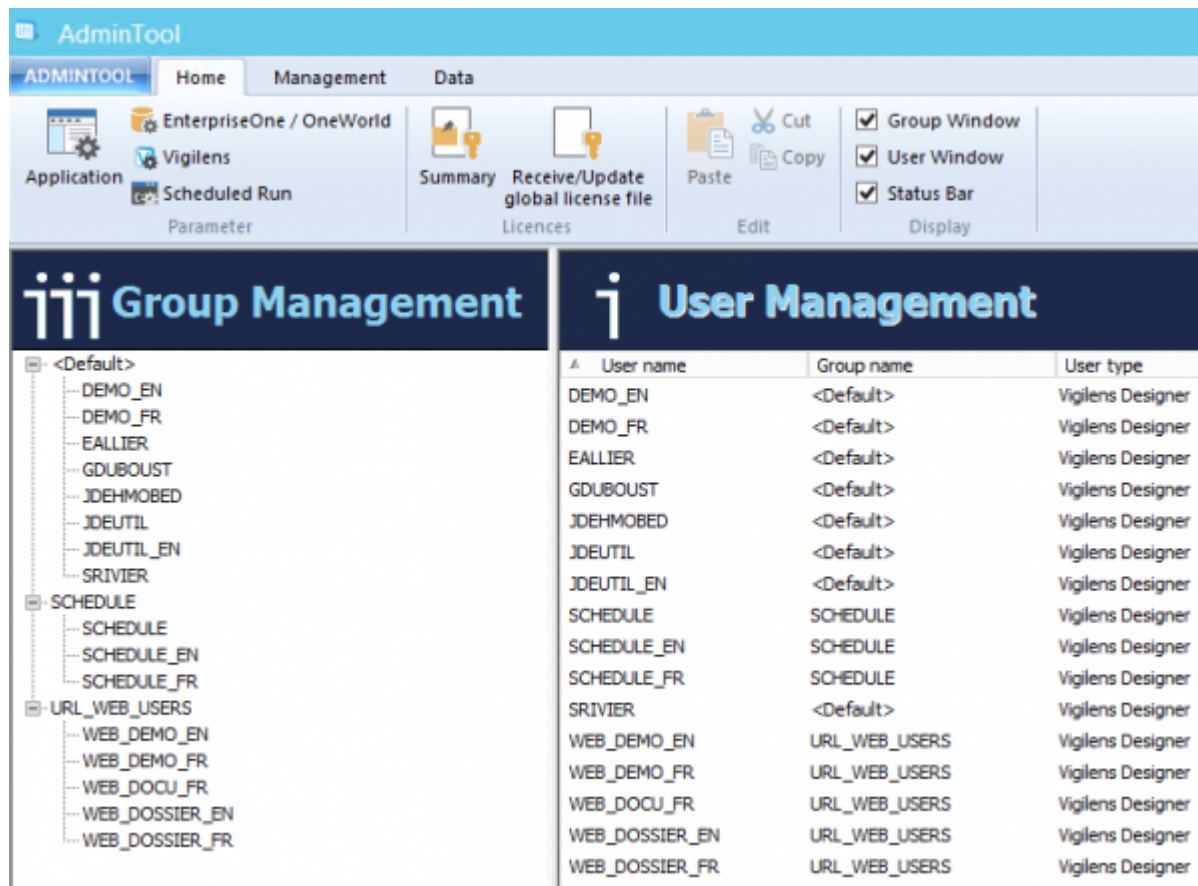




Admintool

Introduction

The AdminTool is at the heart of the product configuration. It allows you to define data sources, users, and security.

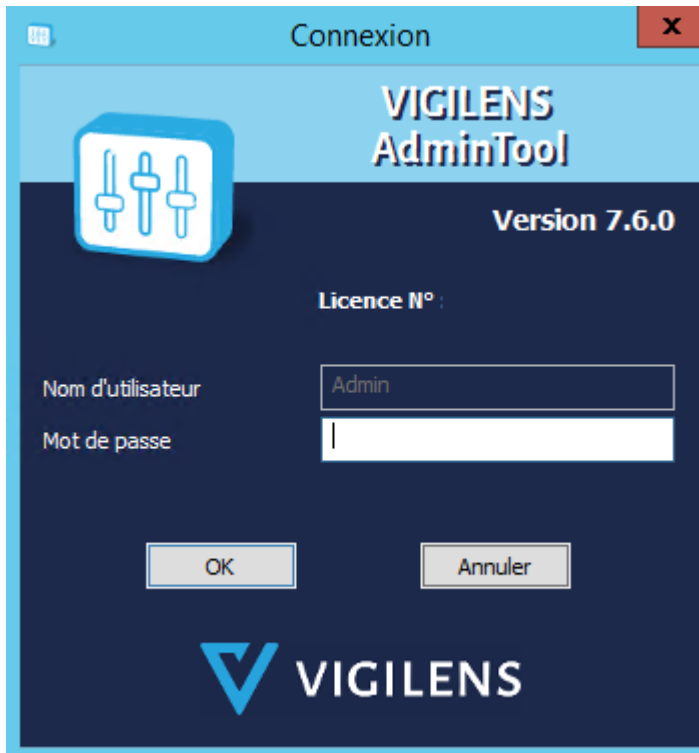


Connection

The AdminTool can be run

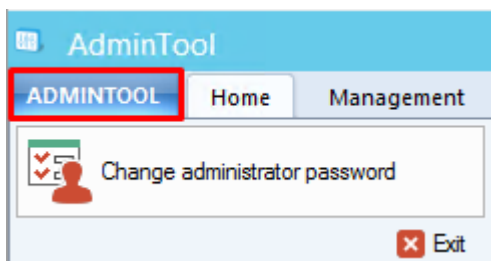
- by windows menu, search string AdminTool
- by .exe : <Vigilens install directory>\UsrAdm.exe

The connection is necessarily made with the Admin user. By default the password is blank.



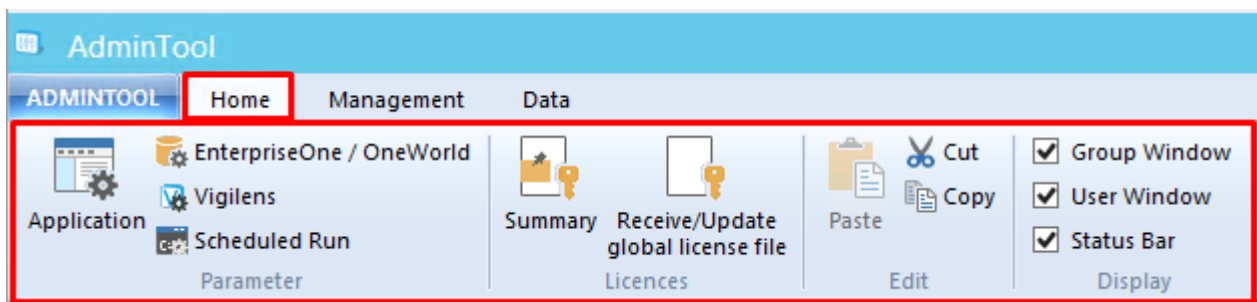
Menus

AdminTool Menu



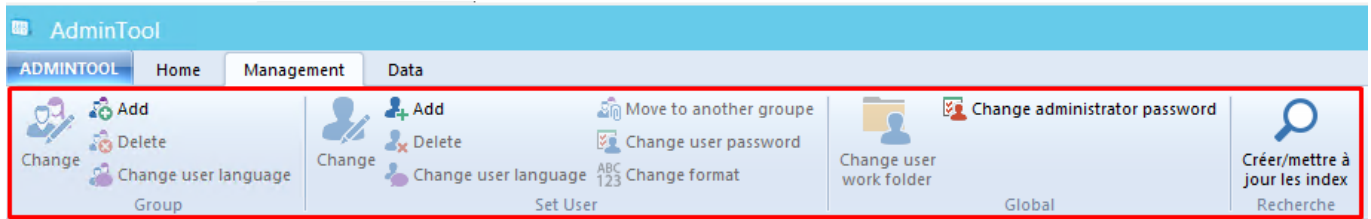
The tab ADMINTOOL at the top left allows you to change the administrator password.

Accueil



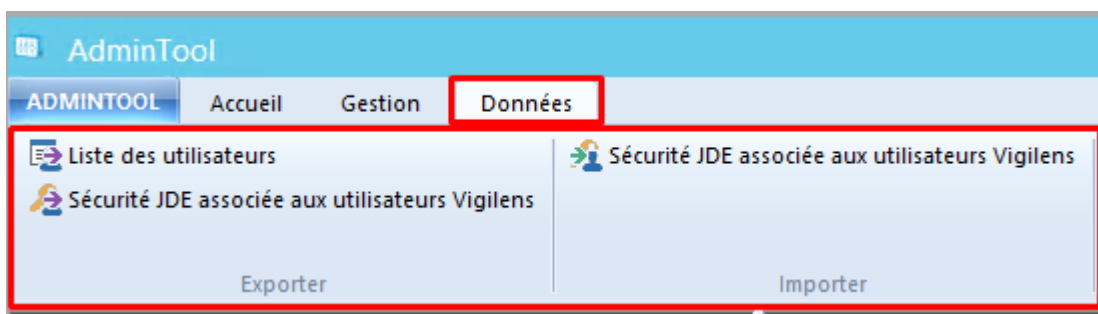
This menu gathers most of the general parameters of Vigilens Reporting.

Management



This menu lets you manage users and groups. It is used in conjunction with the **User Management** and **Group Management** windows.

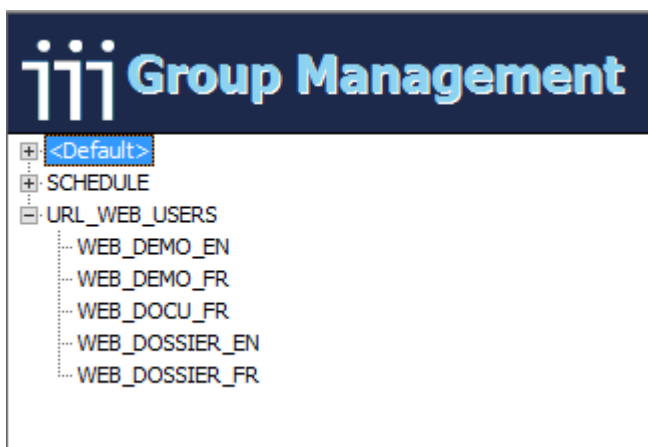
Donn es



Ce menu permet d'exporter ou d'importer des donn es au format CSV :

- Export des utilisateurs.
- Export des s curit s utilisateurs.
- Import des s curit s utilisateurs.

Groups management window



- This panel allows you to view which group a user belongs to. A user belongs to only one group.
- Group membership can be changed by dragging and dropping a user to a target group.
- This window is used in conjunction with the [Management menu](#).
- A right click opens a contextual menu with the actions of the Management Menu.



Fenêtre Gestion des Utilisateur

The screenshot shows the 'Gestion des utilisateurs' window. It contains a table with the following data:

| Nom utilisateur | Nom groupe | Type d'utilisateur |
|-----------------|------------|--------------------|
| CCHAZAL | <Default> | Vigilens Designer |
| CONCEPTEUR | <Default> | Vigilens Designer |
| DDELATOUR | <Default> | Vigilens Designer |
| DDEMANGEAT | <Default> | Vigilens Designer |
| DEDICATED | <Default> | Vigilens Dedicated |
| DEMO | <Default> | Vigilens Designer |
| DFARGIER | <Default> | Vigilens Designer |
| DOSSIER | <Default> | Vigilens Designer |
| EALLIER | <Default> | Vigilens Designer |
| EMULLOT | <Default> | Vigilens Designer |
| FGRAZIANO | <Default> | Vigilens Designer |
| FYEFSAH | <Default> | Vigilens Designer |
| GDUBOUST | <Default> | Vigilens Designer |

Ce panneau permet de visualiser la liste de tous les utilisateurs, le groupe unique auquel chaque utilisateur appartient, ainsi que le profile de sécurité. Cette fenêtre est utilisée en conjonction avec le [Menu Gestion](#).

From:

<https://vigilens.wiki/dokuwiki/> - **Vigilens Reporting Knowledge Garden**

Permanent link:

[https://vigilens.wiki/dokuwiki/doku.php?id=en:v8_0_0:admintool:start
&rev=1594389796](https://vigilens.wiki/dokuwiki/doku.php?id=en:v8_0_0:admintool:start&rev=1594389796)

Last update: **2020/07/10 16:03**

