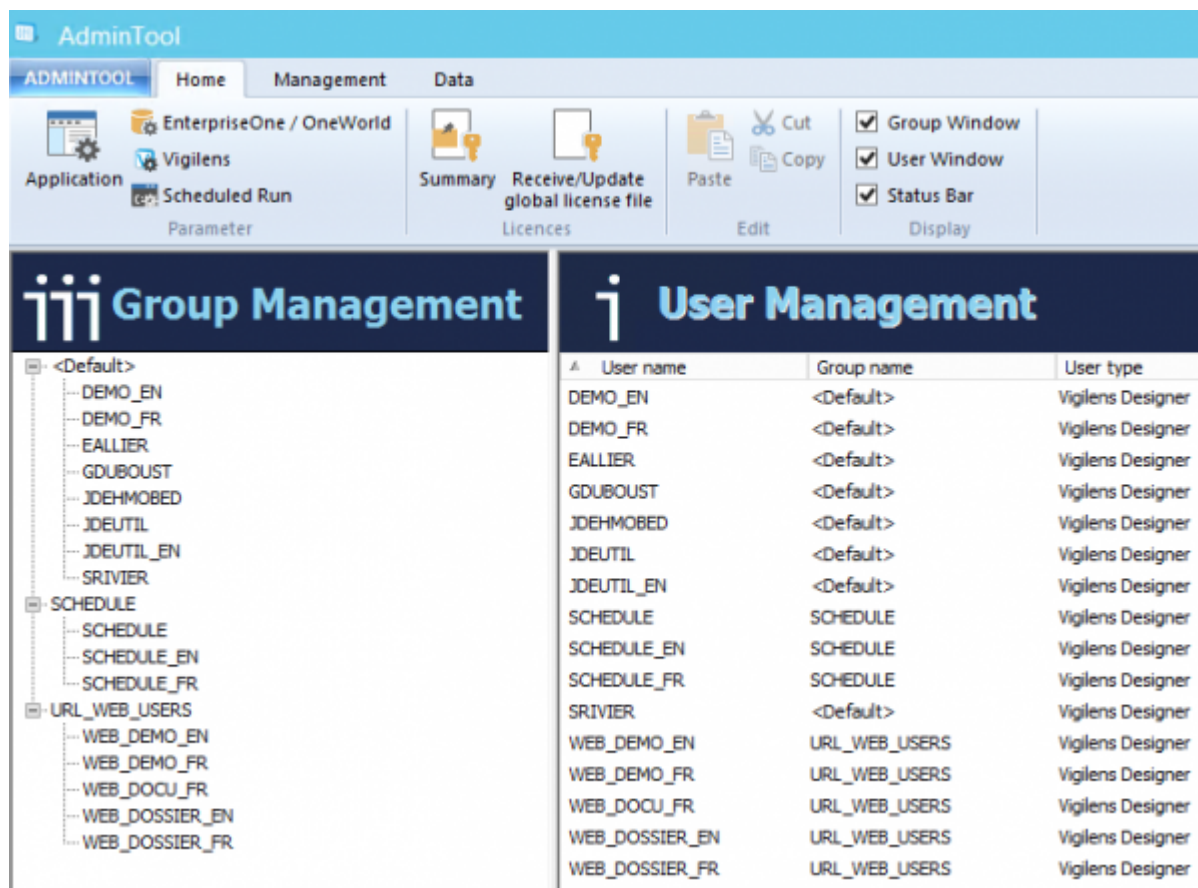




Admintool

Introduction

The AdminTool is at the heart of the product configuration. It allows you to define data sources, users, and security.



Connection

The AdminTool can be run

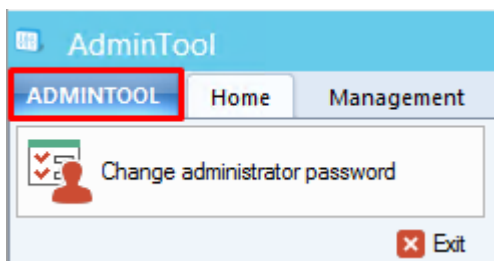
- by windows menu, search string AdminTool
- by .exe : <Vigilens install directory>\UsrAdm.exe

The connection is necessarily made with the Admin user. By default the password is blank.



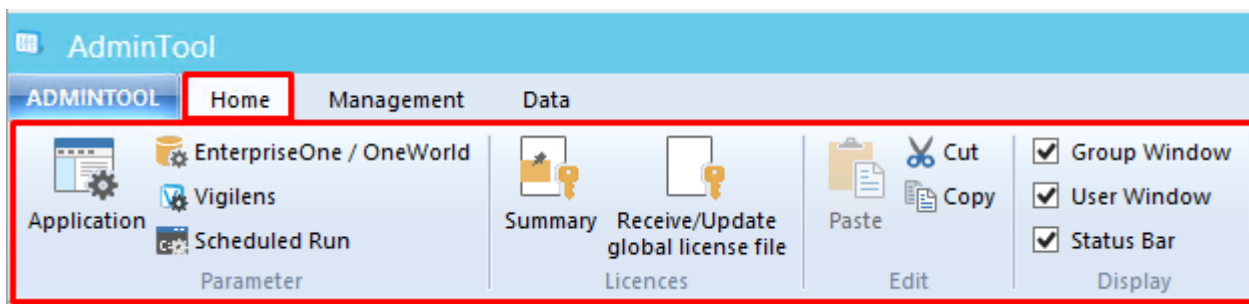
Menus

AdminTool Menu



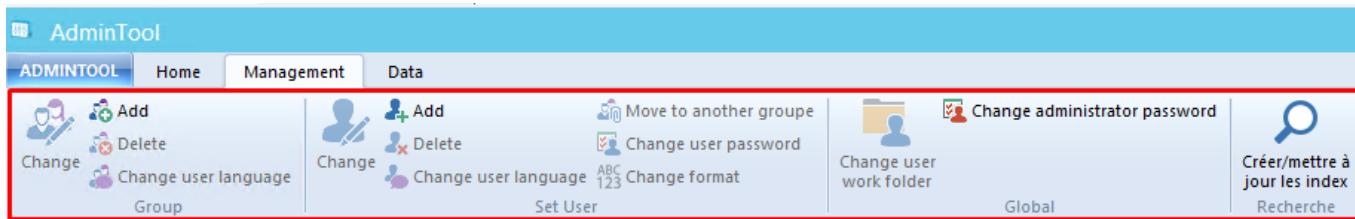
The tab ADMINTOOL at the top left allows you to change the administrator password.

Accueil



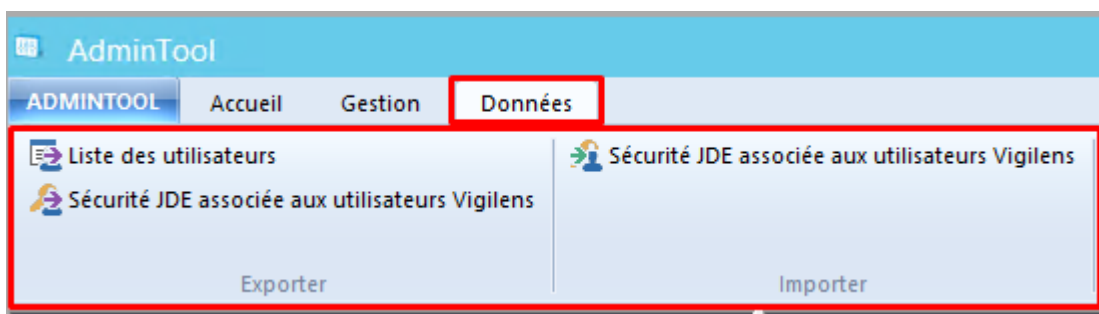
This menu gathers most of the general parameters of Vigilens Reporting.

Management



This menu lets you manage users and groups. It is used in conjunction with the **User Management** and **Group Management** windows.

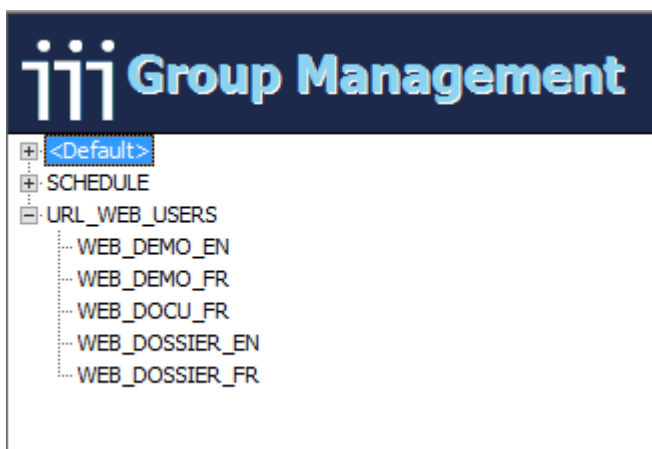
Données



Ce menu permet d'exporter ou d'importer des données au format CSV :

- Export des utilisateurs.
- Export des sécurités utilisateurs.
- Import des sécurités utilisateurs.

Groups management window



- This panel allows you to view which group a user belongs to. A user belongs to only one group.
- Group membership can be changed by dragging and dropping a user to a target group.
- This window is used in conjunction with the [Management menu](#).
- A right click opens a contextual menu with the actions of the Management Menu.

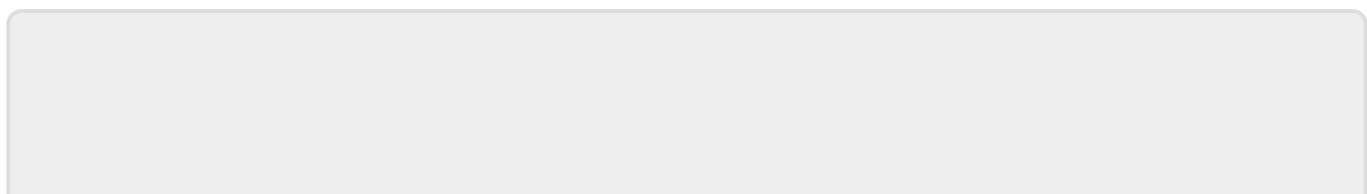


Fenêtre Gestion des Utilisateur

The screenshot shows the 'Gestion des utilisateurs' window. It features a table with the following columns: Nom utilisateur, Nom groupe, and Type d'utilisateur. The table contains 15 rows of user data.

Nom utilisateur	Nom groupe	Type d'utilisateur
CCHAZAL	<Default>	Vigilens Designer
CONCEPTEUR	<Default>	Vigilens Designer
DDELATOUR	<Default>	Vigilens Designer
DDEMANGEAT	<Default>	Vigilens Designer
DEDICATED	<Default>	Vigilens Dedicated
DEMO	<Default>	Vigilens Designer
DFARGIER	<Default>	Vigilens Designer
DOSSIER	<Default>	Vigilens Designer
EALLIER	<Default>	Vigilens Designer
EMULLOT	<Default>	Vigilens Designer
FGRAZIANO	<Default>	Vigilens Designer
FYEFSAH	<Default>	Vigilens Designer
GDUBOUST	<Default>	Vigilens Designer

Ce panneau permet de visualiser la liste de tous les utilisateurs, le groupe unique auquel chaque utilisateur appartient, ainsi que le profile de sécurité. Cette fenêtre est utilisée en conjonction avec le [Menu Gestion](#).



From:

<https://vigilens.wiki/dokuwiki/> - **Vigilens Reporting Knowledge Garden**

Permanent link:

[https://vigilens.wiki/dokuwiki/doku.php?id=en:v8_0_0:admintool:start
&rev=1594389781](https://vigilens.wiki/dokuwiki/doku.php?id=en:v8_0_0:admintool:start&rev=1594389781)

Last update: **2020/07/10 16:03**

