

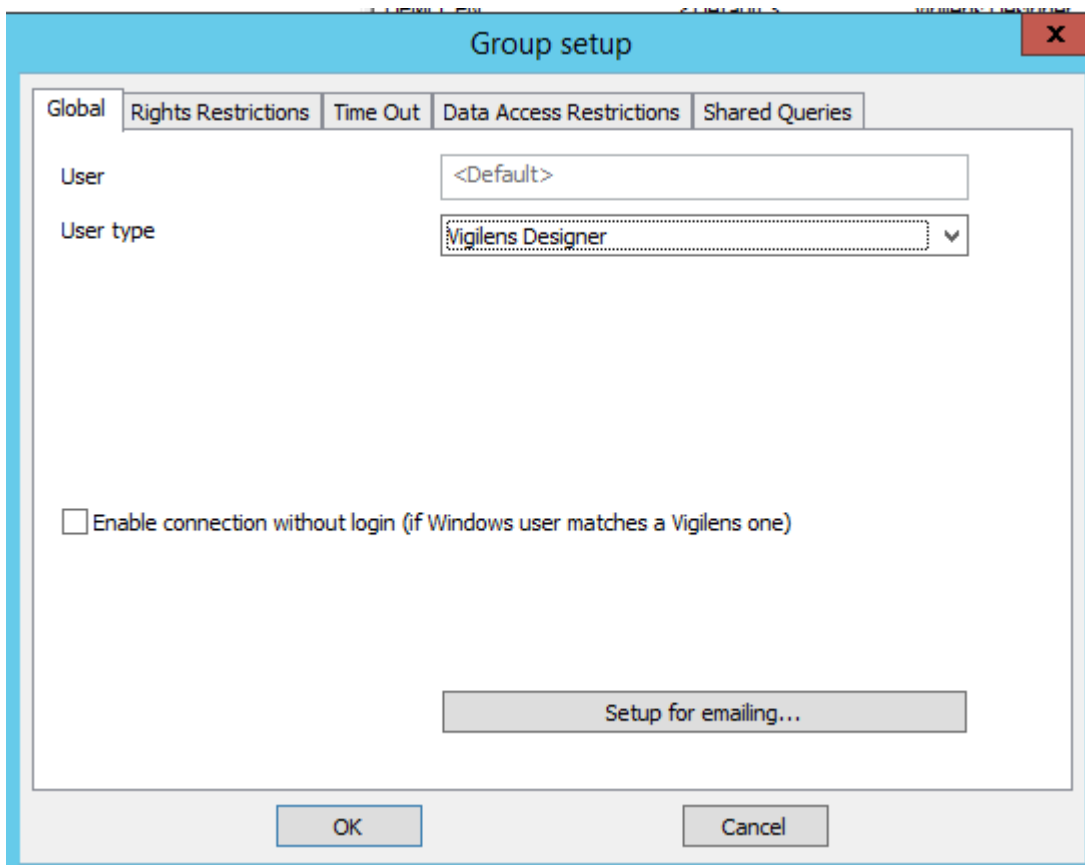
Managent menu > Group

This menu is used in conjunction with the **Group Management** window. See [Admintool](#). If some of the buttons are grayed out, it means that you need to select a group in the Group Management window.

Groups Properties

When we create or modify a group, we have access to all its properties:

Global



Name

Name of the group, knowing that the default group cannot be renamed.

User type

there are 2 possible types of users.

- Vigilens Viewer / Web: only consultation of existing queries
- Vigilens Designer: possibility to create new queries.



The available types depend on the license.

Windows connexion

Allows to launch Vigilens without the login window being displayed, if the Windows user name corresponds to the Vigilens user name.

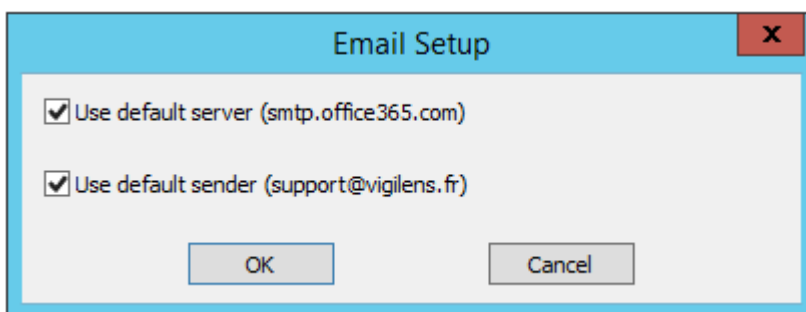
Setup for emailing

You can also assign a different mail server and/or a different sender name for this group than the default server.

The mail server can be set at the user level, in which case it takes precedence over what is set at the group level.



Specifying mail settings at the user level allows you to have a personalized return address.



Unchecking one or both checkboxes opens the entry to the parameters specific to this group.

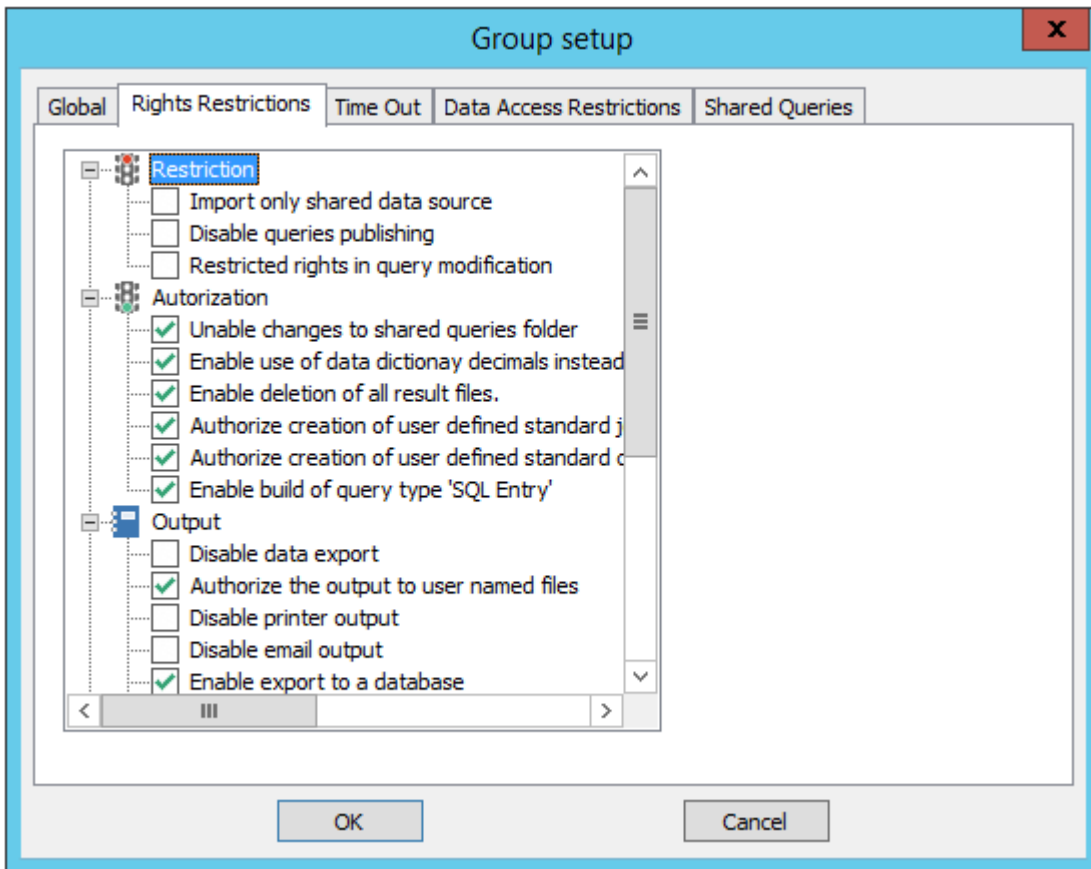
The dialog box is titled "Email Setup" and has a close button (X) in the top right corner. It contains the following elements:

- Use default server (smtp.office365.com) - This checkbox is highlighted with a red border.
- SMTP section:
 - SMTP Server for outgoing mail: [Empty text box]
 - SMTP Server requires authentication
 - User Name: [Empty text box]
 - Password: [Empty text box]
 - SMTP Server Port: [25] (dropdown menu)
 - Default encryption
 - Encryption: None, TLS, SSL
- Use default sender (support@vigilens.fr)
- Buttons: OK and Cancel

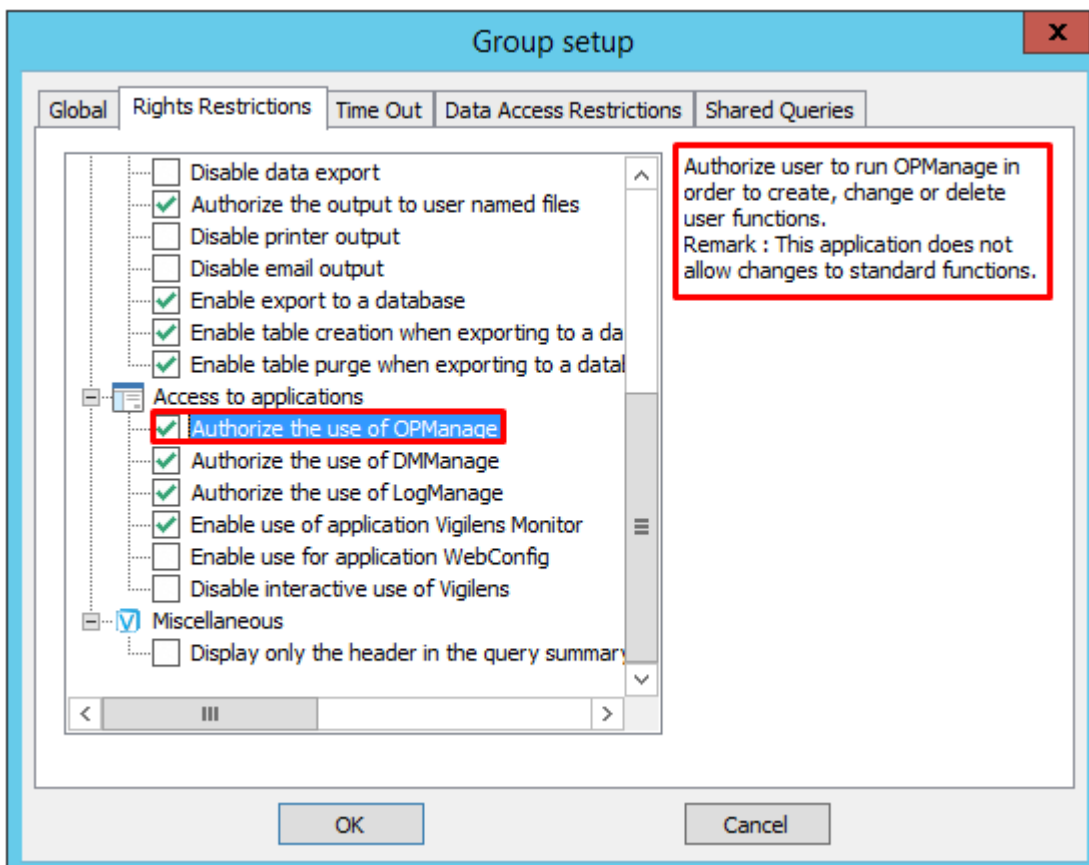
The dialog box is titled "Email Setup" and has a close button (X) in the top right corner. It contains the following elements:

- Use default server (smtp.office365.com)
- Use default sender (support@vigilens.fr)
 - Sender section:
 - Sender address: [Empty text box]
 - Copy for sender
- Buttons: OK and Cancel

Rights restriction



* This is where you define which Vigilens applications a group can access. You can see that for each right, there is a contextual help in the top right corner.





If one of these boxes is checked at the group level, it will also be checked at the group user level and will not be uncheckable.



recupérer les libellés en anglais de Denis

Time Out

The screenshot shows a 'Group setup' dialog box with a 'Time Out' tab selected. It contains two sections for time-out settings:

- SQL run time out:** 'Enable time out' is checked. The time is set to 0 h, 3', and 0\".
- Total time out (SQL run + Data download and display):** 'Enable time out' is checked. The time is set to 0 h, 4', and 0\".

Buttons for 'OK' and 'Cancel' are visible at the bottom.

There are 2 times out:

- the first one is purely relative to the database: it is the maximum time between the submission by Vigilens of the request to the SQL server and the end of the execution. This time out is managed by the database itself.
- the second one is managed by Vigilens: compared to the first one, it also takes into account the data extraction time.



These notions of time-out can be defined at different levels:

- group
- user

- query

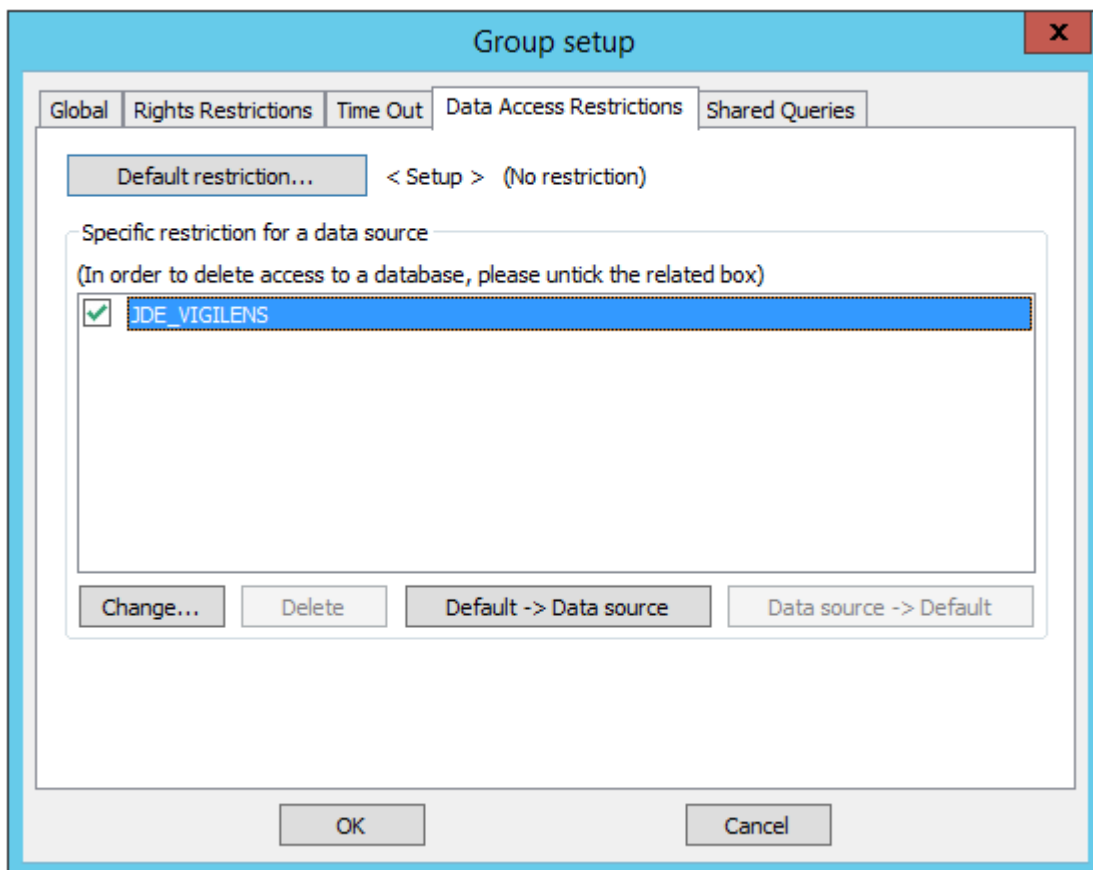


These times must necessarily be smaller and smaller when switching from group to user and then user to query.



Because SQL time out is managed at the database system level, it is not available on all platforms.

Data access restriction



It may be useful to block certain groups from accessing certain sensitive company information. Vigilens can impose restrictions on :

- Environments
- Tables (for JDE/World type sources)
- Aliases (for JDE/World sources)
- Fields
- Values





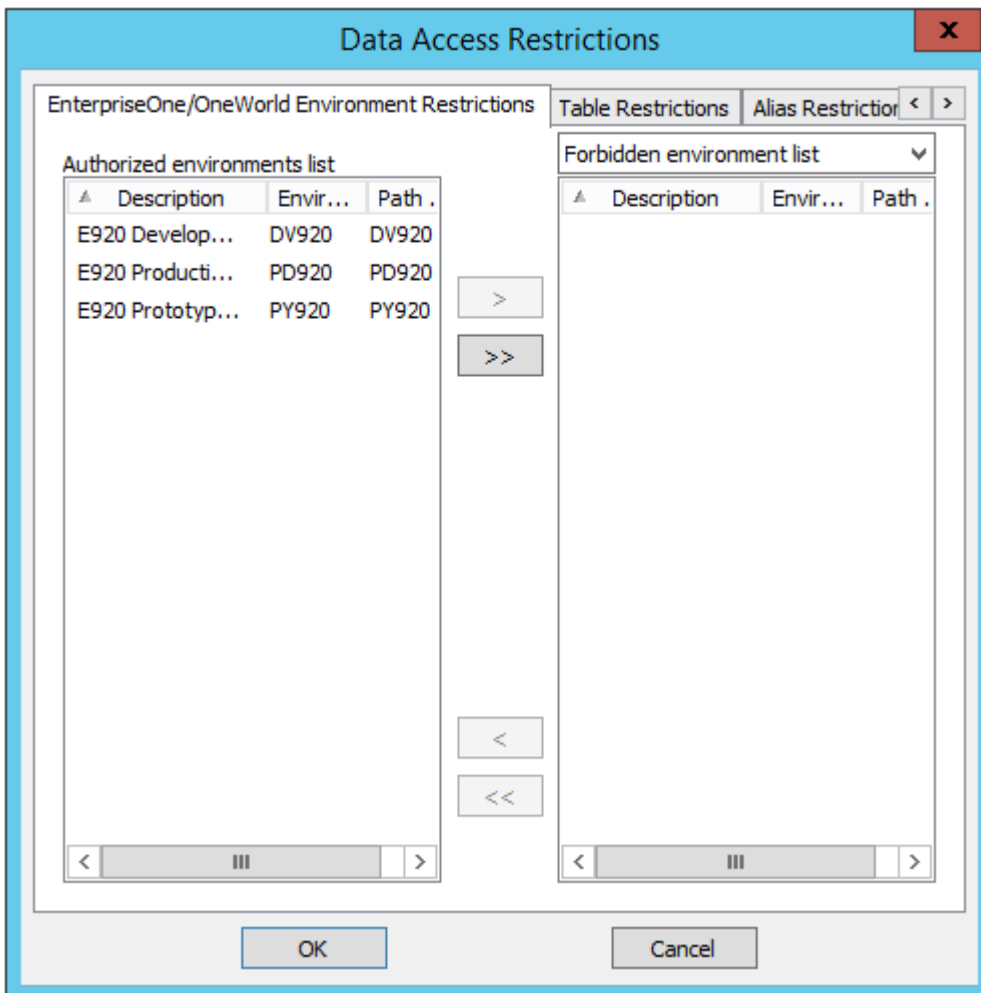
The button Default restrictions... gives you access to settings that are valid for all data sources that do not have specific settings. The sequence of the screens is similar in every way to the settings for a particular data source.



Generally speaking, all of the following restrictions work on either as black list or white list system: either you make explicit which items are prohibited and everything else is allowed, or you make explicit which items are allowed and everything else is prohibited. Black list/White list operation is defined at group level and cannot be changed at user level.

you can:

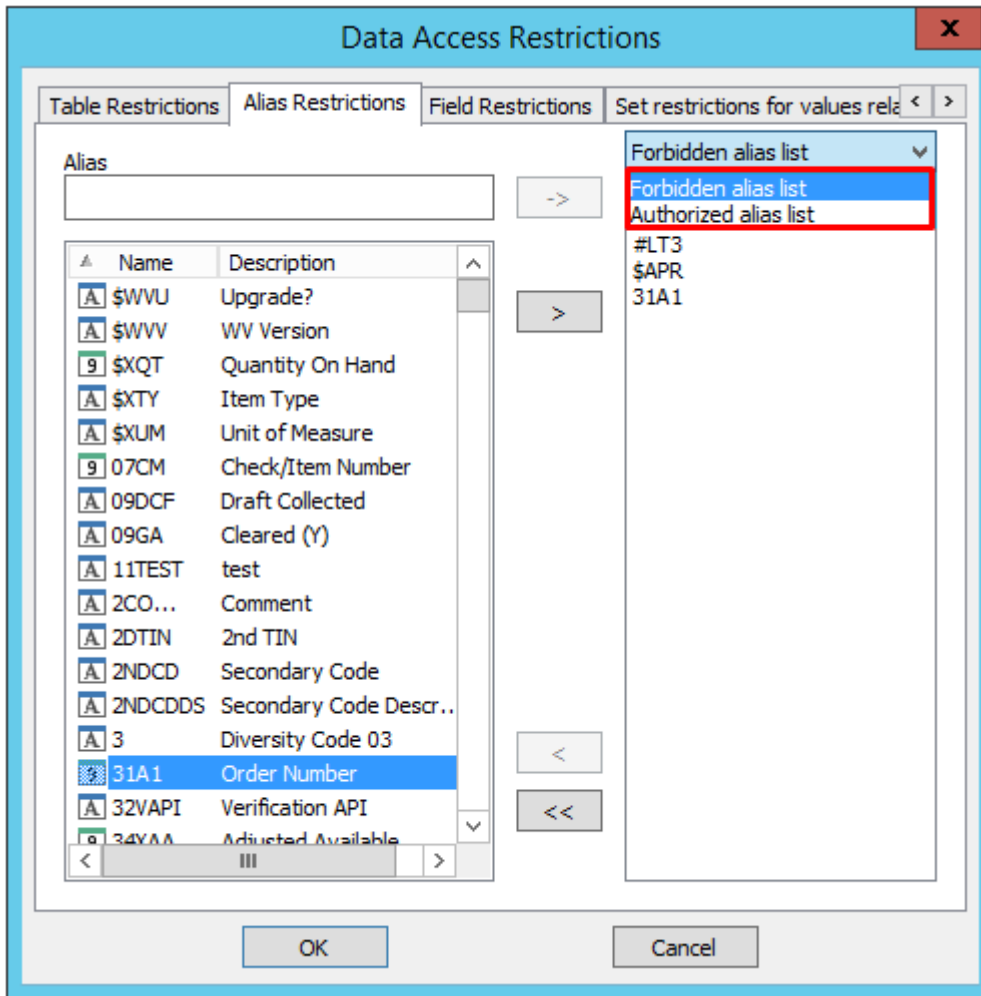
- prevent/allow access to environments, for JDE/World data sources



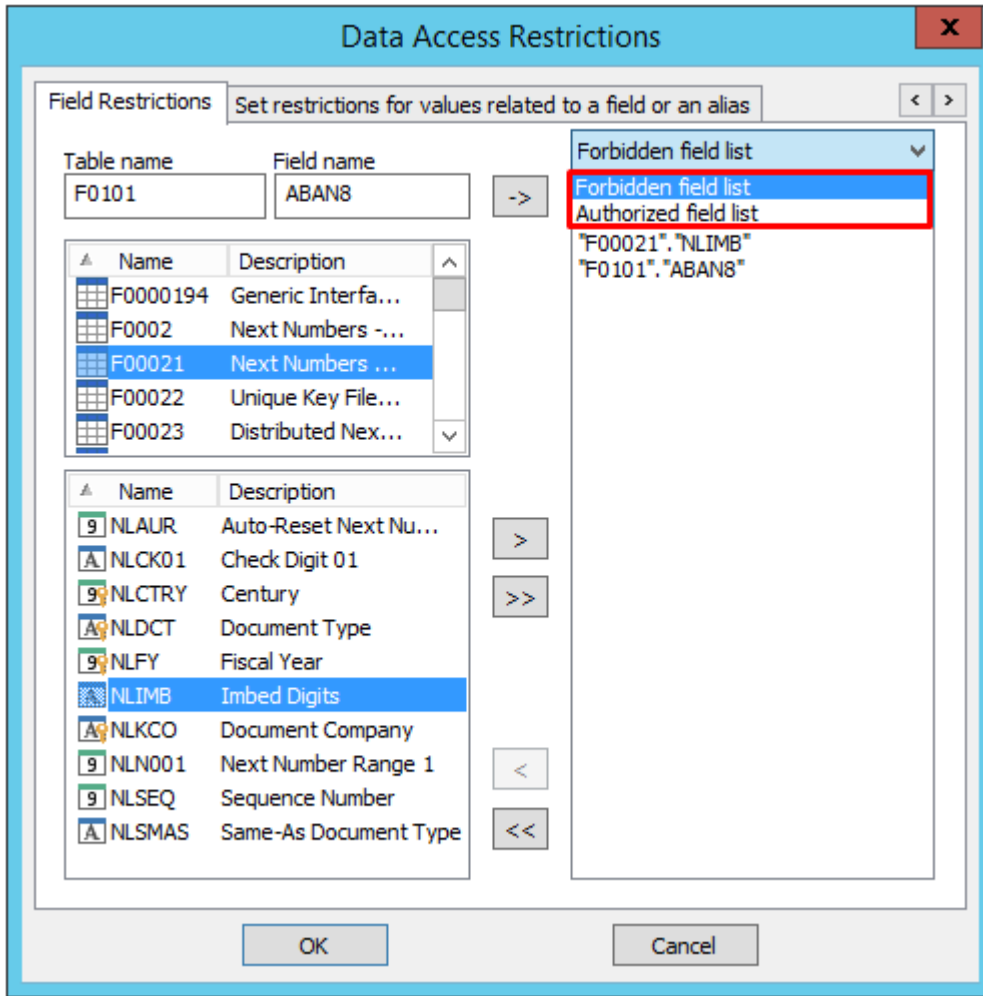
- prevent/allow consultation of a particular table



- prevent/allow access to an alias (JDE/World)



- prevent/allow access to define table column

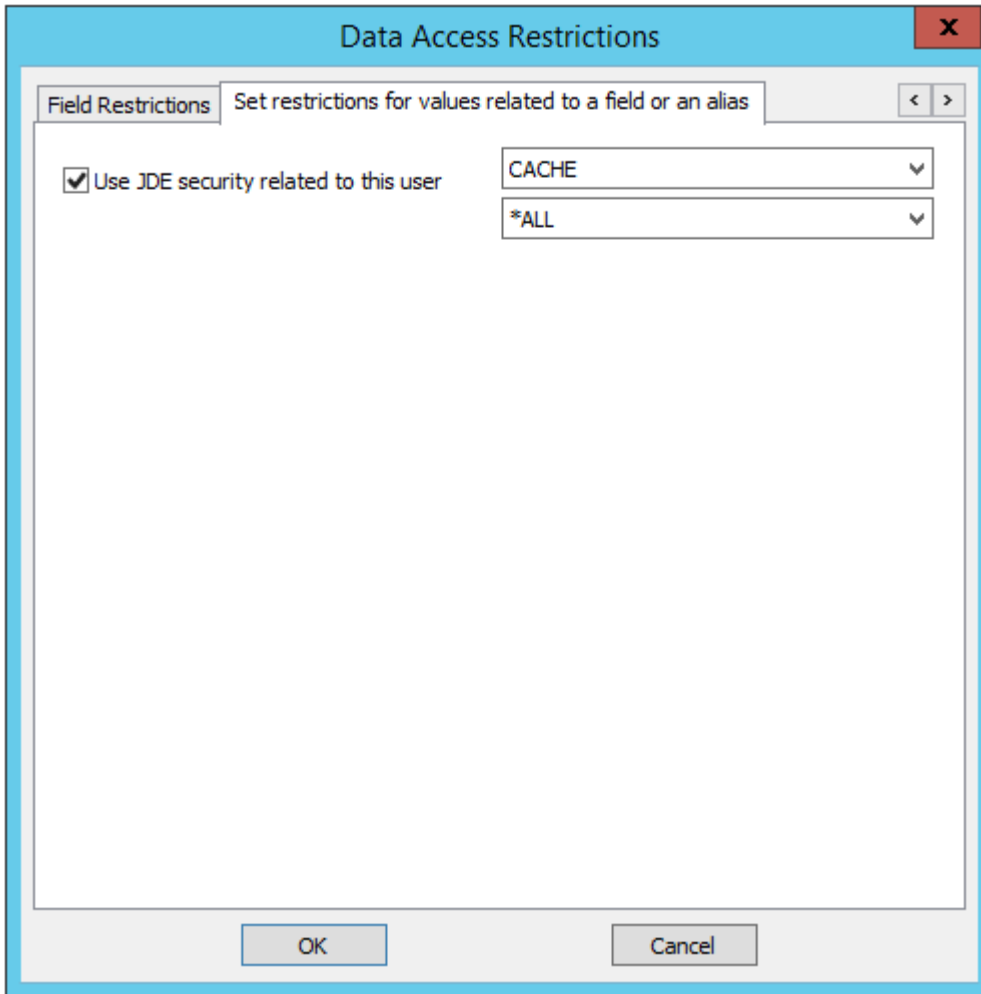


- prevent/allow the display of certain table rows according to criteria on a table column. The criterion can be a single value, a range of values, or a list of values.

The screenshot shows the 'Data Access Restrictions' dialog box. The 'Field Restrictions' tab is active, with the option 'Use JDE security related to this user' unchecked. A dropdown menu is set to 'Condition for forbidden data display'. A '+' button is visible to the right. The 'Set a condition for a value related to a field or an alias' dialog is open, with 'Enter a field' selected. The 'Field to check' section has 'Enter a field without wizard' selected, with 'Table name' as 'F0101' and 'Field name' as 'ABAN8'. The 'Enter a field with wizard' section is also visible, showing a list of fields. The 'Value for forbidden display' dropdown is set to 'Value equal to the following string :', with a red box around the selection button and the text '[F0002].[NNCK01] ='. A red arrow points from this box to the '[F0002].[NNCK01]' dialog, which is open to the 'Single value' tab, showing input fields for '0' and '3'.



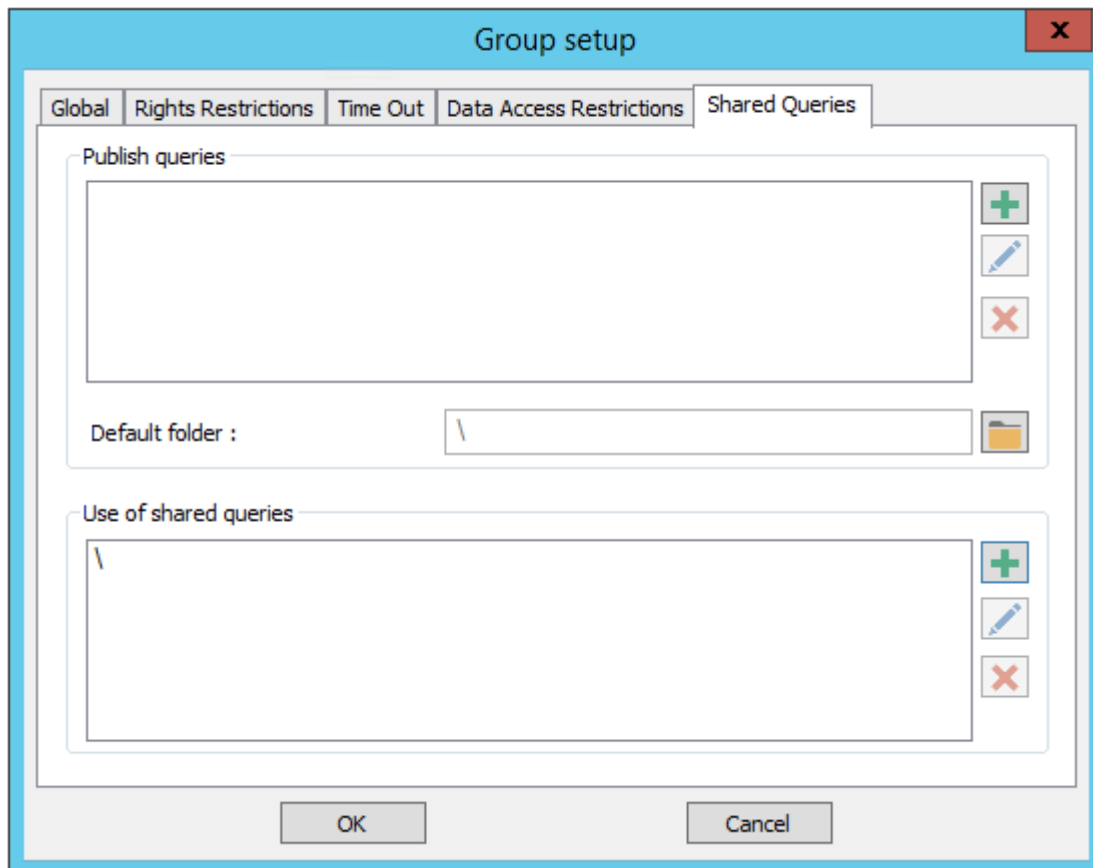
If the data source is JDE/World, we have in addition the choice to use the JDE security associated with a user and one of his roles (or all roles with the value “*ALL”).



Shared Queries


This setting allows you to :

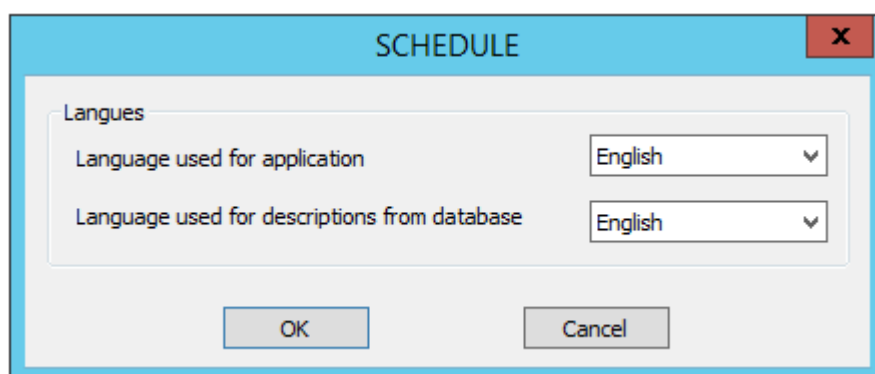
- Define the place(s) where the user can deposit the queries he wants to share. The user has access to the entire tree structure of the specified directories.
- Define the shared queries it can use



- Publish queries: list of shared folders accessible when publishing queries
 - Default folder: proposed by default when publishing queries
- Use of shared queries: list of shared folders accessible via the web interface

Change Language

 Change user language



From: <https://vigilens.wiki/dokuwiki/> - **Vigilens Reporting Knowledge Garden**

Permanent link: https://vigilens.wiki/dokuwiki/doku.php?id=en:v8_0_0:admintool:menus:gestion:groupe:start&rev=1595935483

Last update: **2020/07/28 13:24**

