

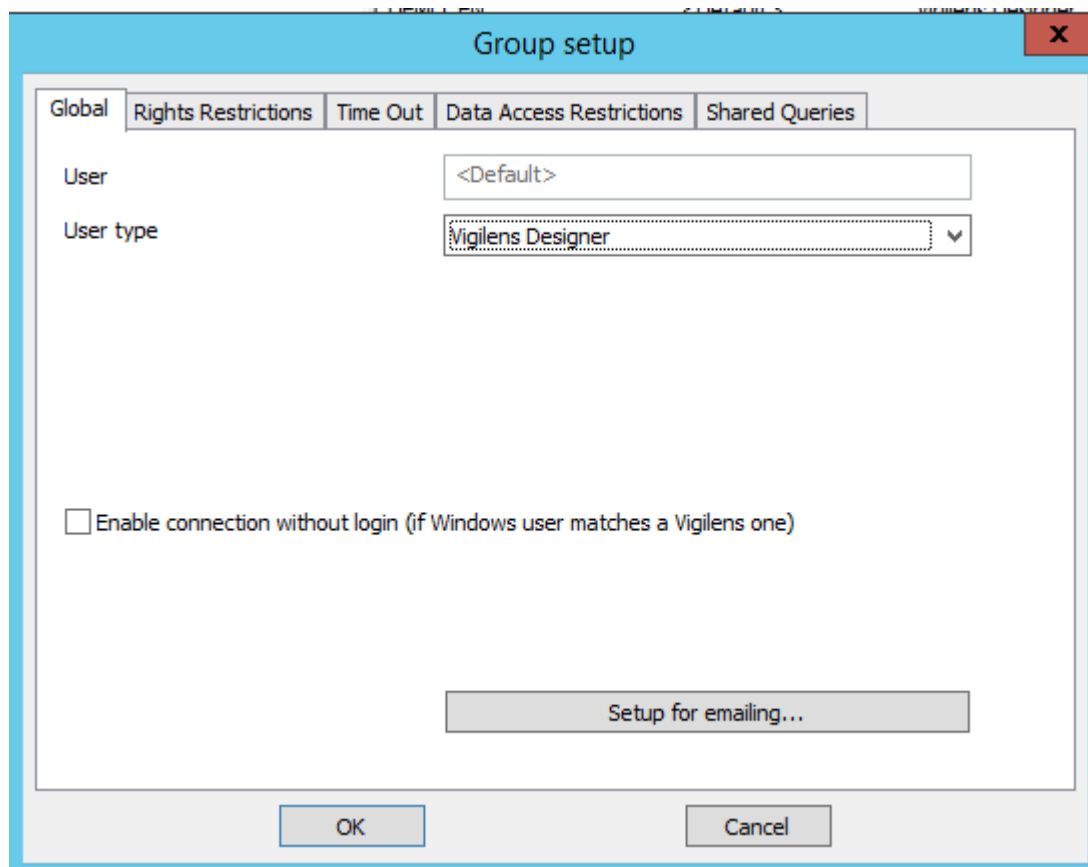
Managent menu > Group

This menu is used in conjunction with the **Group Management** window. See [Admintool](#). If some of the buttons are grayed out, it means that you need to select a group in the Group Management window.

Propriétés des Groupes

Lorsque nous créons ou modifions un groupe, nous avons accès à l'ensemble de ses propriétés :

Global



Name

Name of the group, knowing that the default group cannot be renamed.

User type

there are 2 possible types of users.

- Vigilens Viewer / Web: only consultation of existing queries
- Vigilens Designer: possibility to create new queries.



The available types depend on the license.

Windows connexion

Allows to launch Vigilens without the login window being displayed, if the Windows user name corresponds to the Vigilens user name.

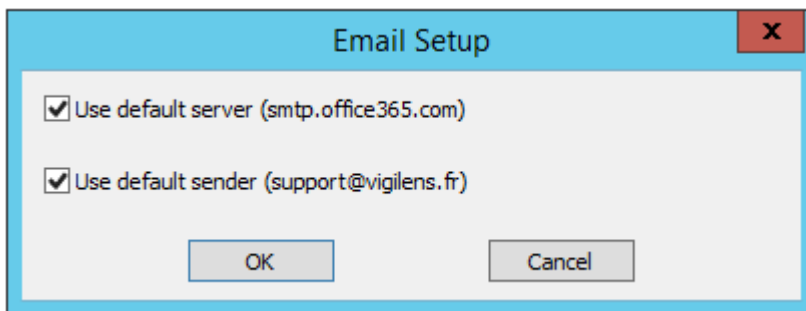
Setup for emailing

You can also assign a different mail server and/or a different sender name for this group than the default server.

The mail server can be set at the user level, in which case it takes precedence over what is set at the group level.



Specifying mail settings at the user level allows you to have a personalized return address.



Unchecking one or both checkboxes opens the entry to the parameters specific to this group.

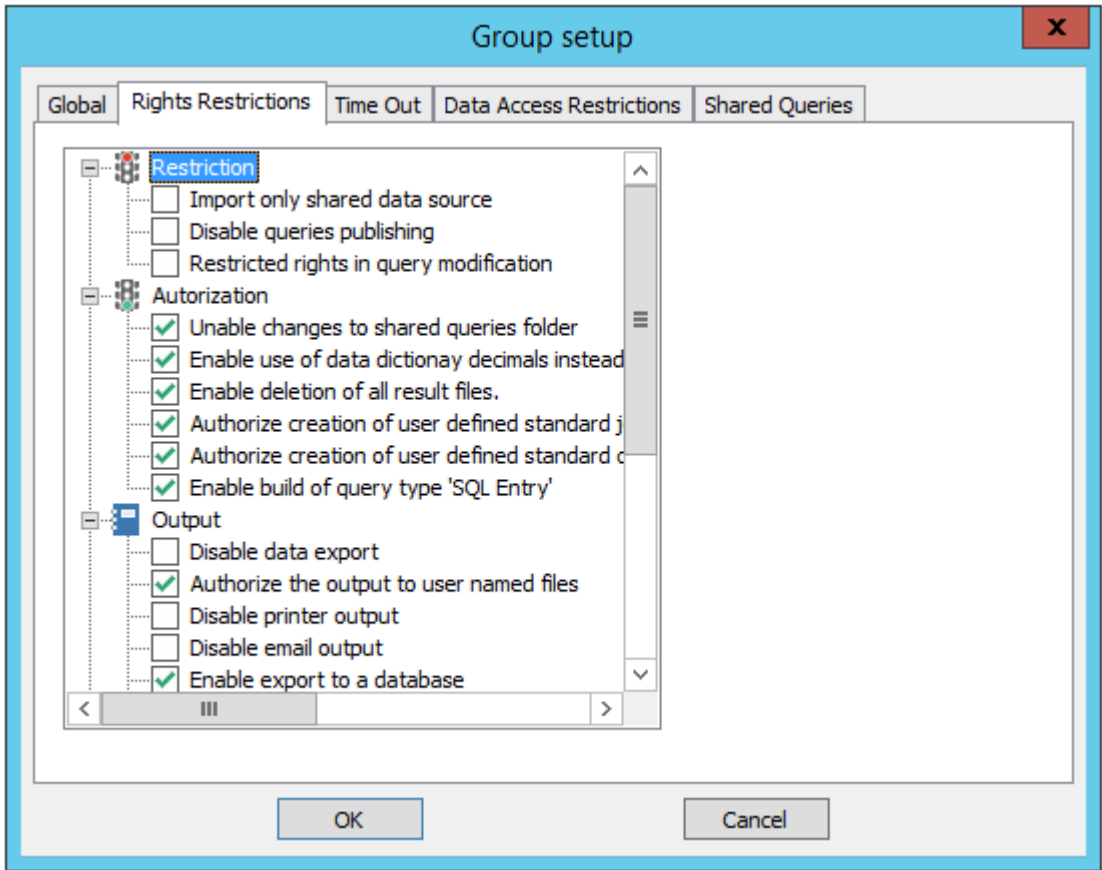
The dialog box is titled "Email Setup" and has a close button (X) in the top right corner. It contains the following elements:

- Use default server (smtp.office365.com) - This checkbox is highlighted with a red border.
- SMTP section:
 - SMTP Server for outgoing mail: [Empty text box]
 - SMTP Server requires authentication
 - User Name: [Empty text box]
 - Password: [Empty text box]
 - SMTP Server Port: [25] (dropdown menu)
 - Default encryption
 - Encryption: None, TLS, SSL
- Use default sender (support@vigilens.fr)
- Buttons: OK and Cancel

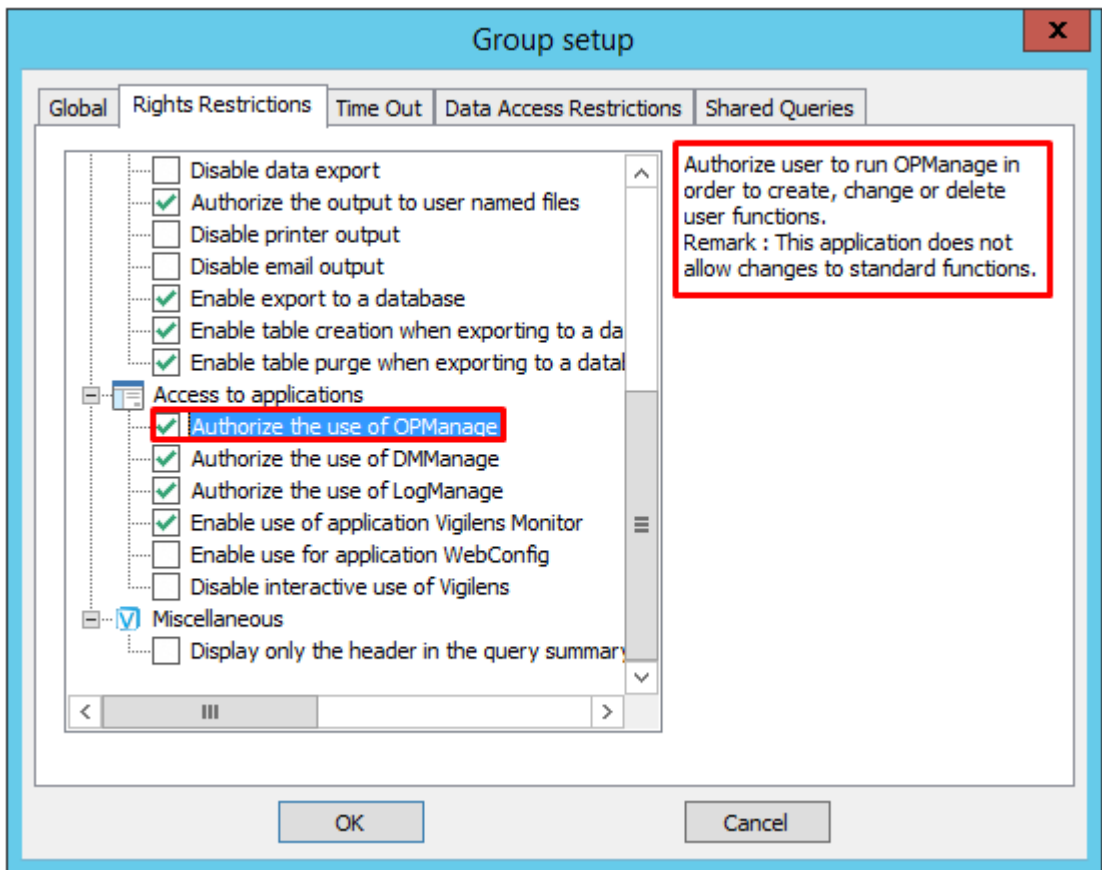
The dialog box is titled "Email Setup" and has a close button (X) in the top right corner. It contains the following elements:

- Use default server (smtp.office365.com)
- Use default sender (support@vigilens.fr)
 - Sender section:
 - Sender address: [Empty text box]
 - Copy for sender
- Buttons: OK and Cancel

Restriction of rights



* This is where you define which Vigilens applications a group can access. You can see that for each right, there is a contextual help in the top right corner.



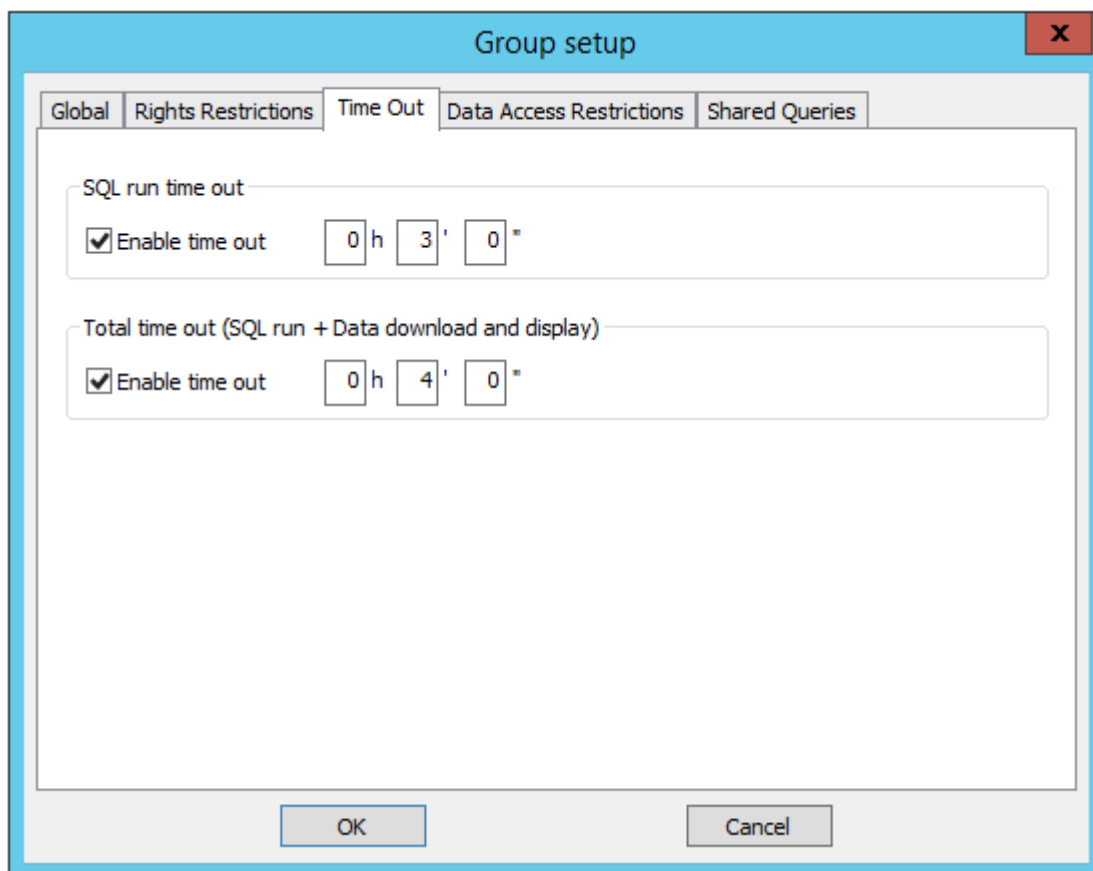


If one of these boxes is checked at the group level, it will also be checked at the group user level and will not be uncheckable.



recupérer les libellés en anglais de Denis

Time Out



There are 2 times out:

- the first one is purely relative to the database: it is the maximum time between the submission by Vigilens of the request to the SQL server and the end of the execution. This time out is managed by the database itself.
- the second one is managed by Vigilens: compared to the first one, it also takes into account the data extraction time.



These notions of time-out can be defined at different levels:

- group
- user

- query

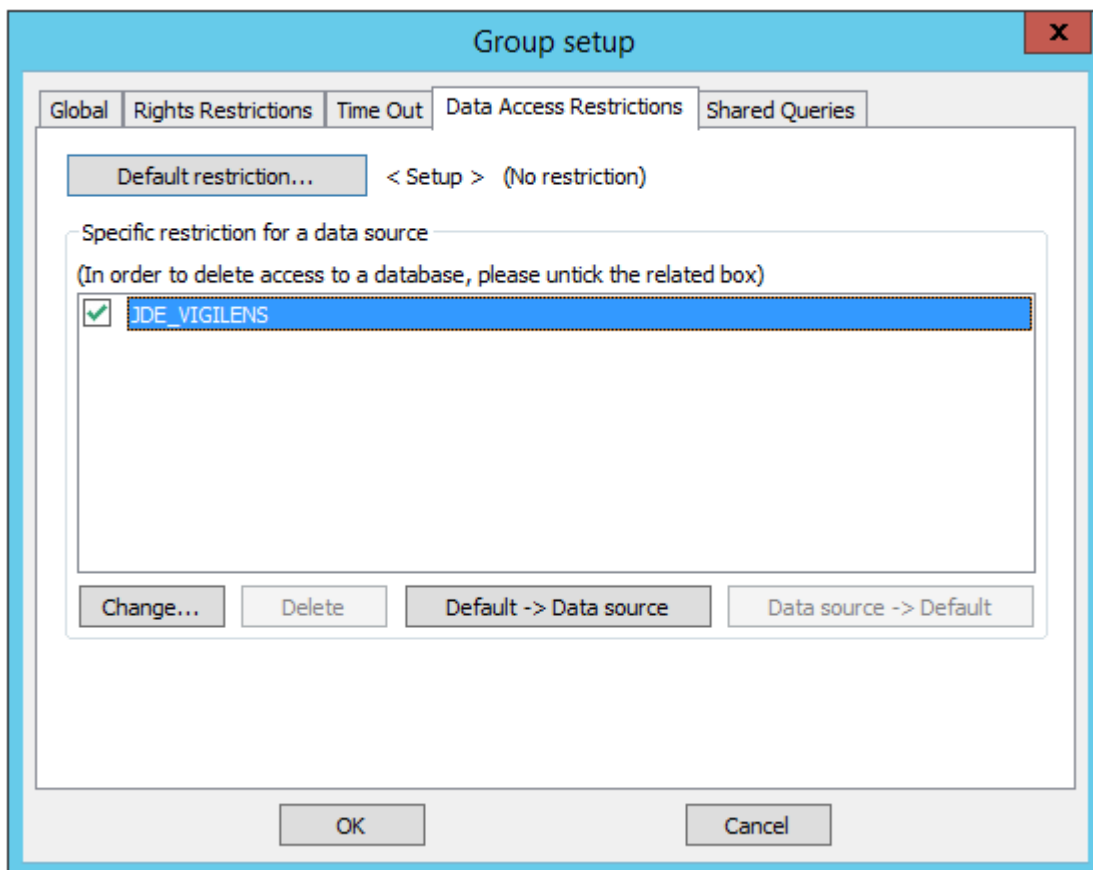


These times must necessarily be smaller and smaller when switching from group to user and then user to query.



Because SQL time out is managed at the database system level, it is not available on all platforms.

Data access restriction



It may be useful to block certain groups from accessing certain sensitive company information. Vigilens can impose restrictions on :

- Environments
- Tables (for JDE/World type sources)
- Aliases (for JDE/World sources)
- Fields
- Values





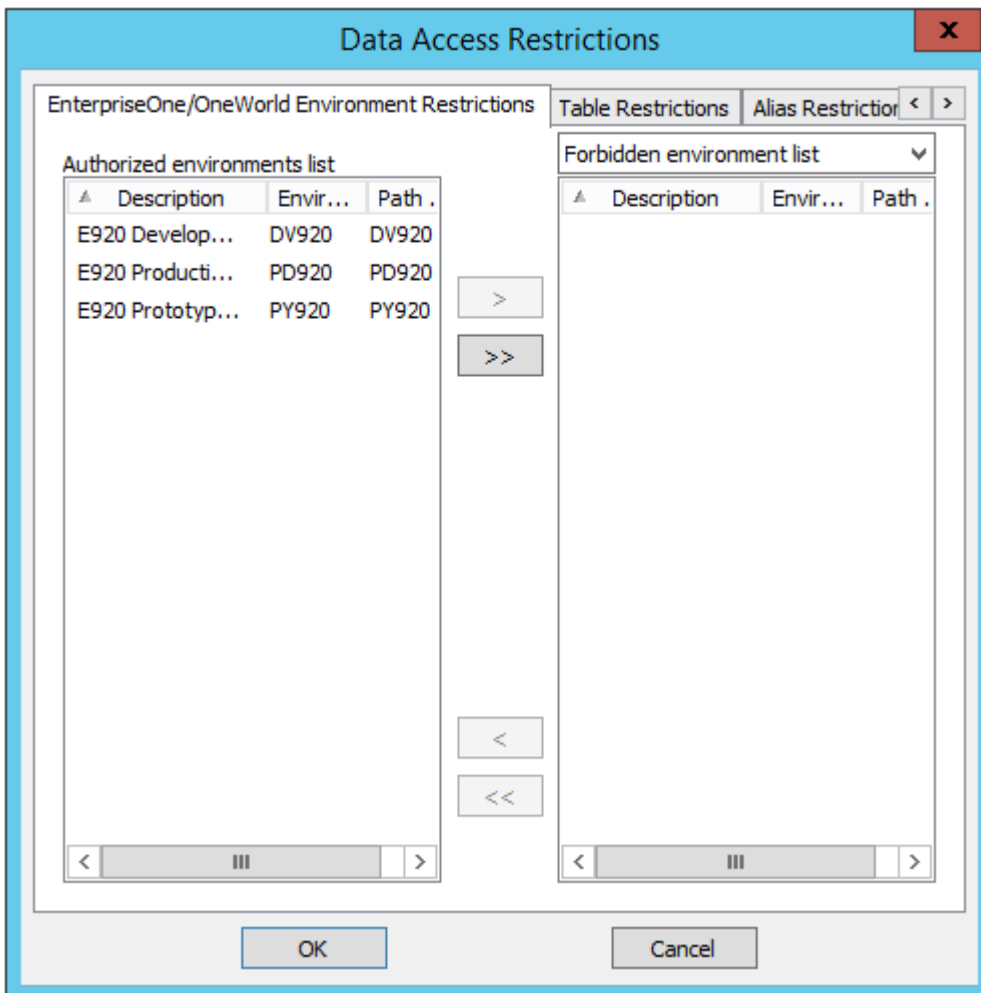
The button Default restrictions... gives you access to settings that are valid for all data sources that do not have specific settings. The sequence of the screens is similar in every way to the settings for a particular data source.



Generally speaking, all of the following restrictions work on either as black list or white list system: either you make explicit which items are prohibited and everything else is allowed, or you make explicit which items are allowed and everything else is prohibited. Black list/White list operation is defined at group level and cannot be changed at user level.

you can:

- prevent/allow access to environments, for JDE/World data sources



- prevent/allow consultation of a particular table



- prevent/allow access to an alias (JDE/World)

From: <https://vigilens.wiki/dokuwiki/> - Vigilens Reporting Knowledge Garden

Permanent link: https://vigilens.wiki/dokuwiki/doku.php?id=en:v8_0_0:admintool:menus:gestion:groupe:start&rev=1594815643

Last update: 2020/07/15 14:20

