

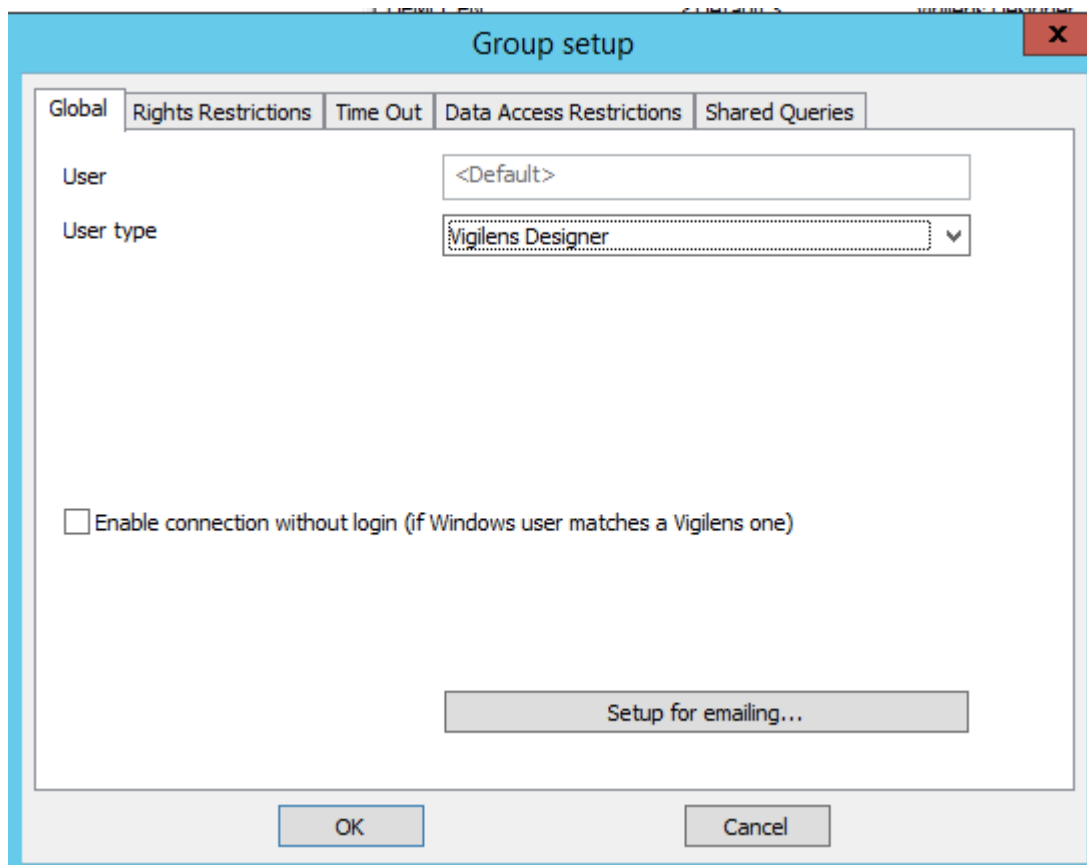
Managent menu > Group

This menu is used in conjunction with the **Group Management** window. See [Admintool](#). If some of the buttons are grayed out, it means that you need to select a group in the Group Management window.

Propriétés des Groupes

Lorsque nous créons ou modifions un groupe, nous avons accès à l'ensemble de ses propriétés :

Global



The screenshot shows a dialog box titled "Group setup" with a close button (X) in the top right corner. The dialog has five tabs: "Global", "Rights Restrictions", "Time Out", "Data Access Restrictions", and "Shared Queries". The "Global" tab is active. It contains the following fields and controls:

- User:** A text box containing "<Default>".
- User type:** A dropdown menu with "Vigilens Designer" selected.
- Enable connection without login (if Windows user matches a Vigilens one):** An unchecked checkbox.
- Setup for emailing...:** A button located below the checkbox.
- OK** and **Cancel** buttons are located at the bottom of the dialog.

Name

Name of the group, knowing that the default group cannot be renamed.

User type

there are 2 possible types of users.

- Vigilens Viewer / Web: only consultation of existing queries
- Vigilens Designer: possibility to create new queries.



The available types depend on the license.

Windows connexion

Allows to launch Vigilens without the login window being displayed, if the Windows user name corresponds to the Vigilens user name.

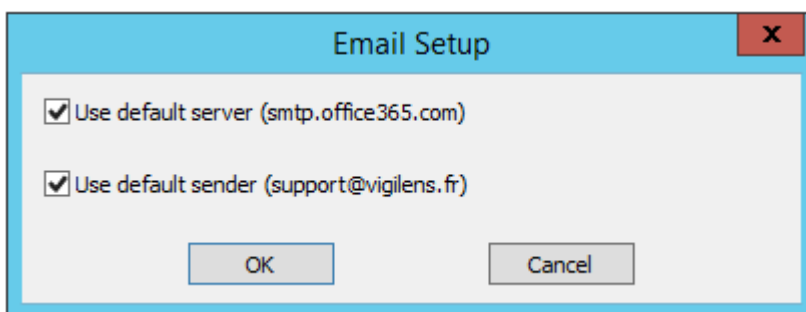
Setup for emailing

You can also assign a different mail server and/or a different sender name for this group than the default server.

The mail server can be set at the user level, in which case it takes precedence over what is set at the group level.



Specifying mail settings at the user level allows you to have a personalized return address.



Unchecking one or both checkboxes opens the entry to the parameters specific to this group.

Email Setup [X]

Use default server (smtp.office365.com)

SMTP

SMTP Server for outgoing mail

SMTP Server requires authentication

User Name

Password

SMTP Server Port

Default encryption

Encryption

None TLS SSL

Use default sender (support@vigilens.fr)

OK Cancel

Email Setup [X]

Use default server (smtp.office365.com)

Use default sender (support@vigilens.fr)

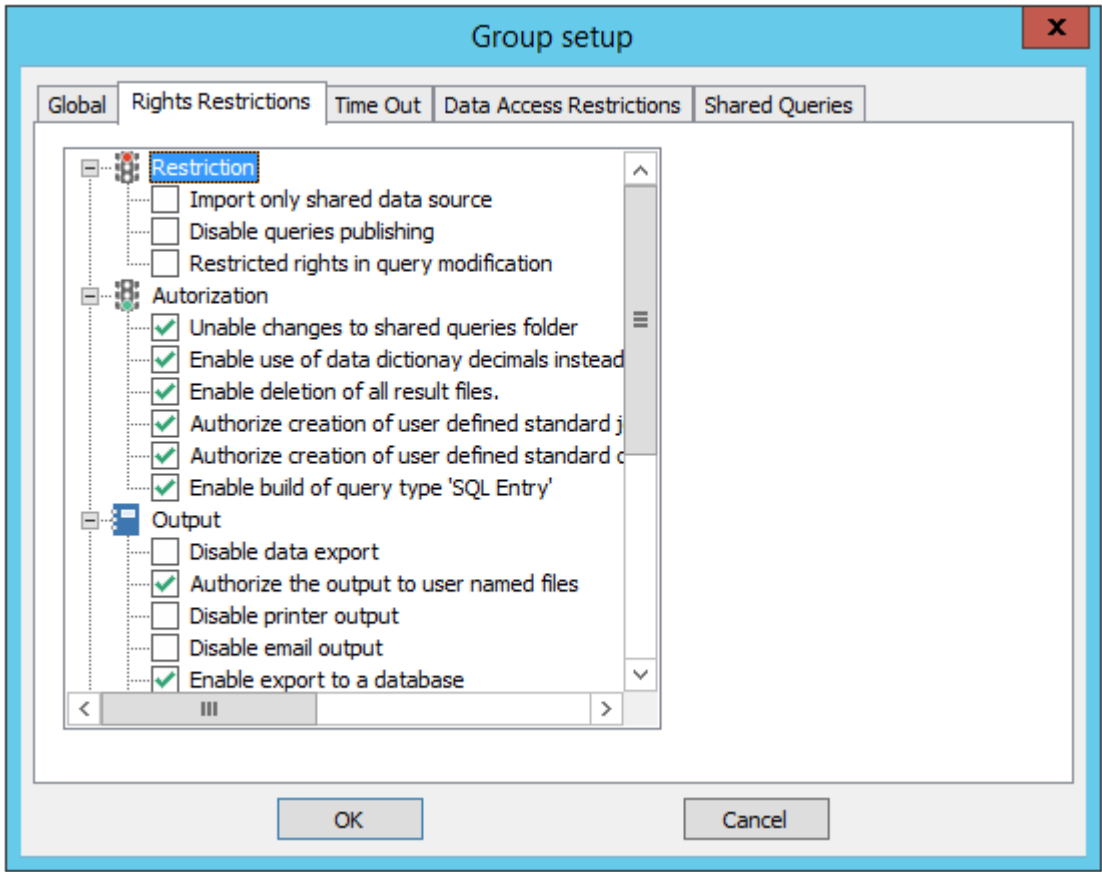
Sender

Sender address

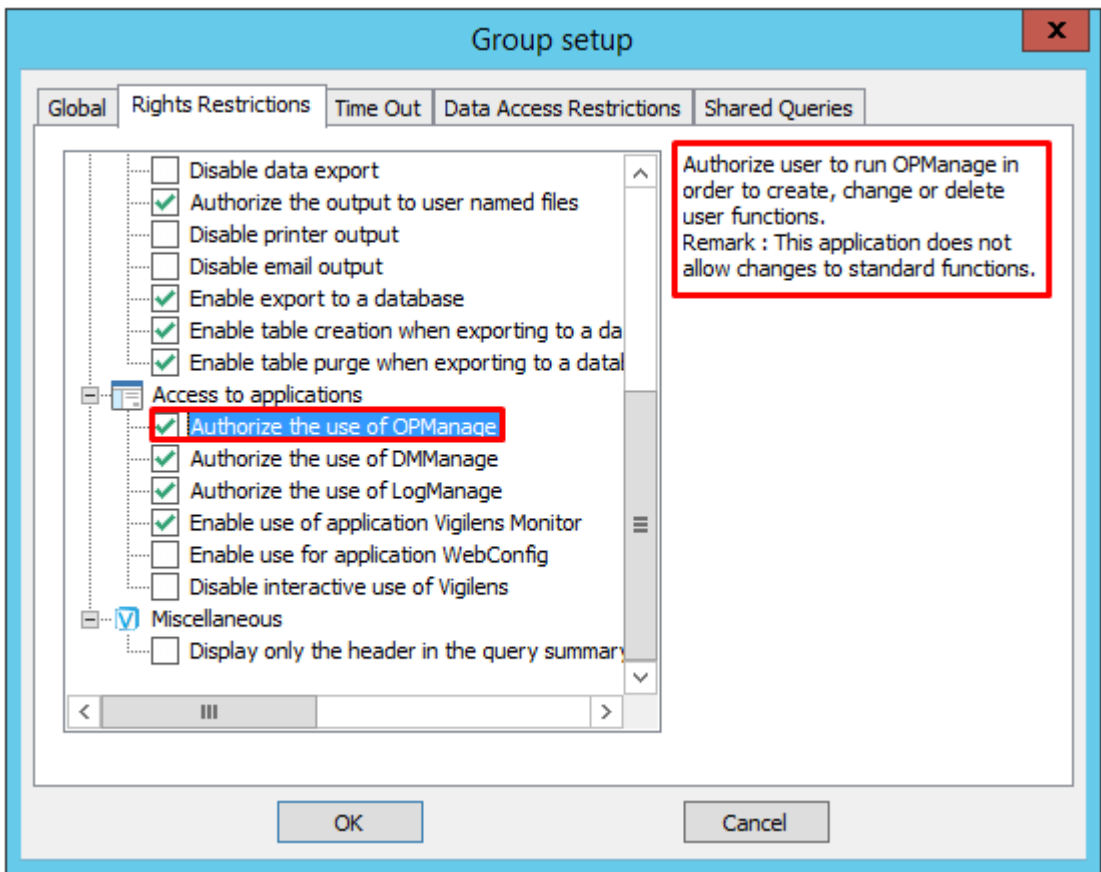
Copy for sender

OK Cancel

Restriction of rights



* This is where you define which Vigilens applications a group can access. You can see that for each right, there is a contextual help in the top right corner.





If one of these boxes is checked at the group level, it will also be checked at the group user level and will not be uncheckable.



recupérer les libellés en anglais de Denis

Time Out

The screenshot shows a 'Group setup' dialog box with a blue title bar and a close button (X) in the top right corner. It has five tabs: 'Global', 'Rights Restrictions', 'Time Out', 'Data Access Restrictions', and 'Shared Queries'. The 'Time Out' tab is selected. There are two main sections, each with a label, a checked 'Enable time out' checkbox, and a time picker (hours, minutes, seconds). The first section is 'SQL run time out' with a time of 0 h, 3', 0". The second section is 'Total time out (SQL run + Data download and display)' with a time of 0 h, 4', 0". At the bottom, there are 'OK' and 'Cancel' buttons.

There are 2 times out:

- the first one is purely relative to the database: it is the maximum time between the submission by Vigilens of the request to the SQL server and the end of the execution. This time out is managed by the database itself.
- the second one is managed by Vigilens: compared to the first one, it also takes into account the data extraction time.



These notions of time-out can be defined at different levels:

- group
- user

- query



These times must necessarily be smaller and smaller when switching from group to user and then user to query.



Because SQL time out is managed at the database system level, it is not available on all platforms.

fd

From: <https://vigilens.wiki/dokuwiki/> - **Vigilens Reporting Knowledge Garden**

Permanent link: https://vigilens.wiki/dokuwiki/doku.php?id=en:v8_0_0:admintool:menus:gestion:groupe:start&rev=1594815032

Last update: **2020/07/15 14:10**

