

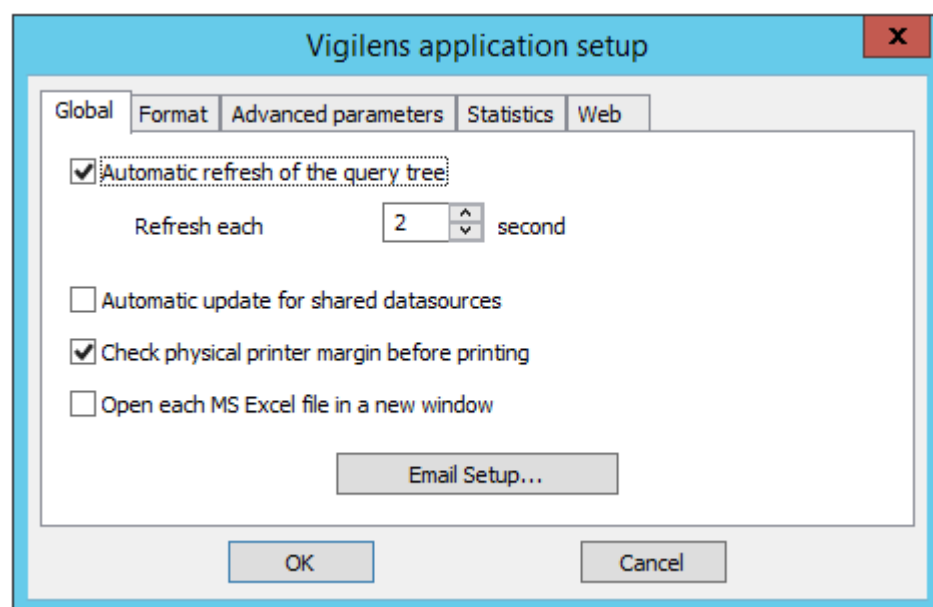
Home Menu > Vigilens

The parameters entered at this level are common to all the machines on which the Vigilens application is installed (including Vigilens Web). It is stored in the “Vigilens.EVIDENS-Parameter” file located in the root of the shared directory.



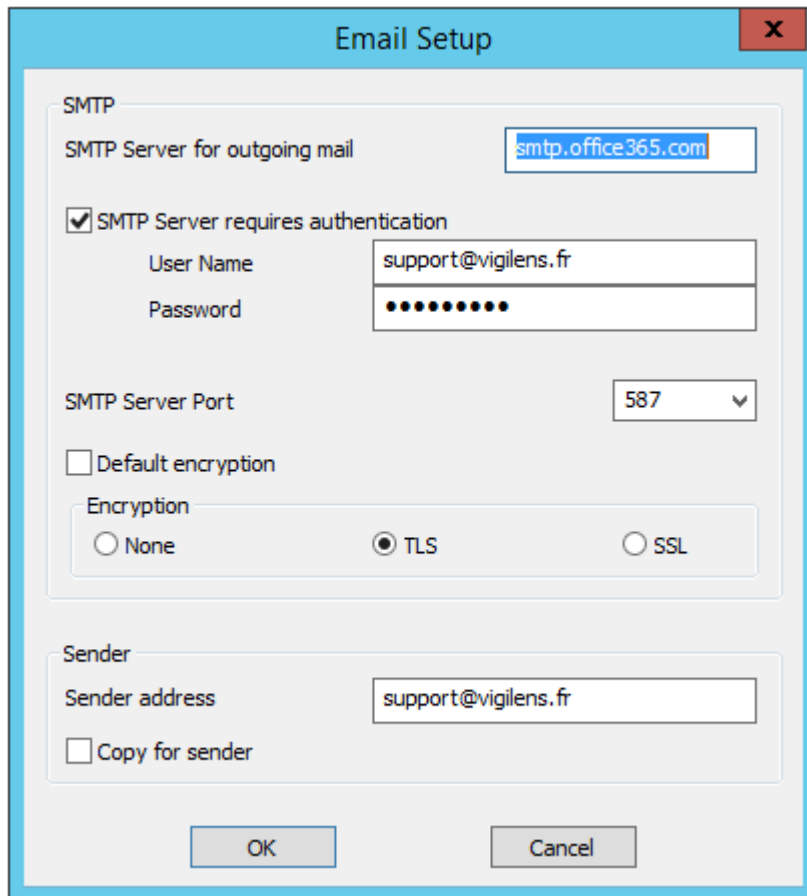
It is possible to return to the default setting by deleting the “Vigilens.EVIDENS-Parameter” file present at the root of the shared directory.

Global



- Automatic refresh of the query tree : Allows you to delete/enable the automatic update of the list of queries (user and shared) displayed in the Vigilens Designer application. If the update is activated, it is possible to specify the refresh frequency.
- Automatic update for shared datasources: If this option is activated, all shared data sources are systematically re-imported when the Vigilens Designer application is launched.
NB: Except in special cases, it is preferable not to activate this option.
- Check physical printer margins before printing: During a “Print” output, displays a warning message if some elements to be displayed are located outside the printable area.
- Open each MS-Excel file in a new window : During a “Excel File” output, displays the generated file in a new Excel instance rather than using an existing instance (which can be a problem if the existing instance is in use).

Mail setup



The 'Email Setup' dialog box is used to configure outgoing mail settings. It includes fields for the SMTP server, authentication details, port, encryption type, and sender information.

Email Setup

SMTP

SMTP Server for outgoing mail:

☒ SMTP Server requires authentication

User Name:

Password:

SMTP Server Port:

☐ Default encryption

Encryption: ☐ None ☒ TLS ☐ SSL

Sender

Sender address:

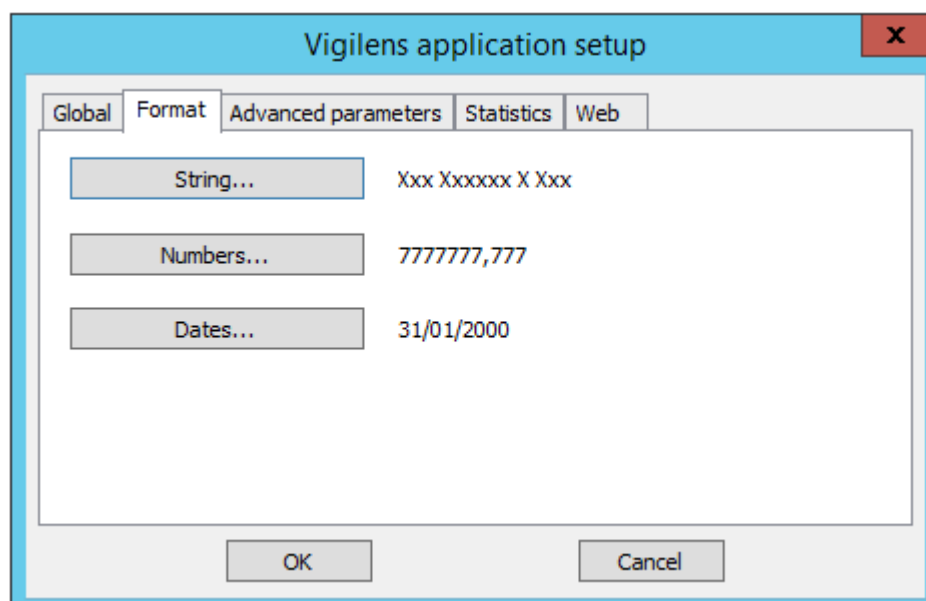
☐ Copy for sender

OK Cancel

Smtp server setting that will be used for “Send mail” outputs as well as the sender appearing in the mail.

NB: This default setting can be redefined at the level of each group, each user and even in each query (at the level of the output setting).

Format



The 'Vigilens application setup' dialog box allows users to configure various application settings. The 'Format' tab is currently selected, showing options for string, numbers, and date formatting.

Vigilens application setup

Global **Format** Advanced parameters Statistics Web

String... Xxx Xxxxxx X Xxx

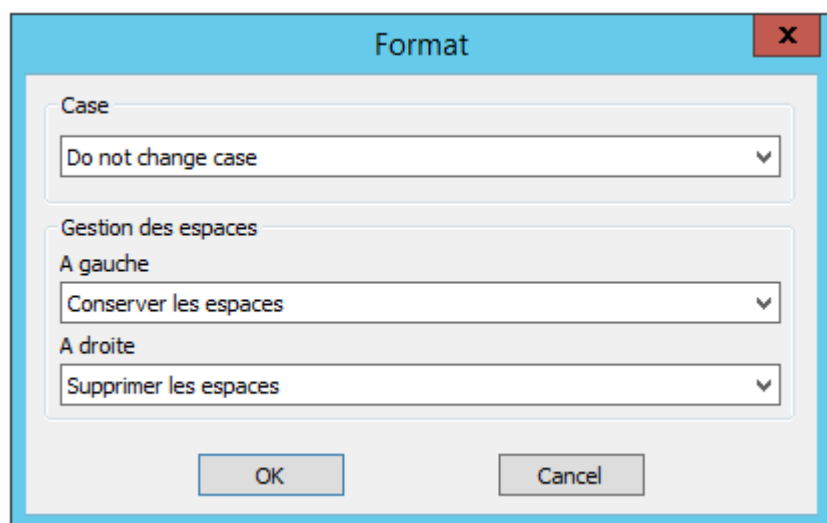
Numbers... 7777777,777

Dates... 31/01/2000

OK Cancel

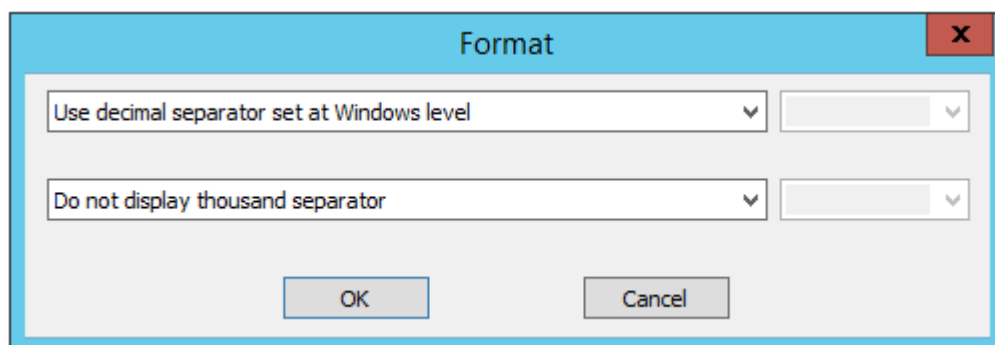
Allows you to set the default formatting for each type of data. This setting can be redefined at the level of each group, each user and each field of each query.

String



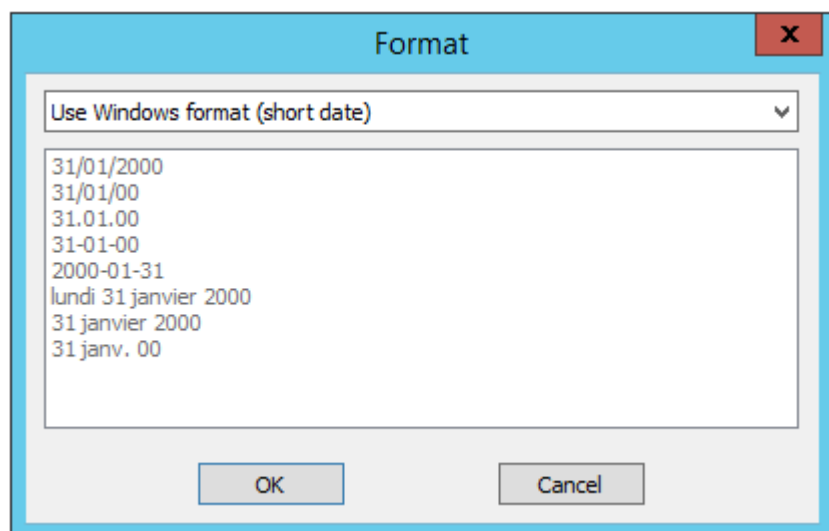
The 'Format' dialog box for String data type has a light blue title bar with a close button (X) in the top right corner. The main content area is light gray and contains three sections. The first section, 'Case', has a dropdown menu set to 'Do not change case'. The second section, 'Gestion des espaces', has a sub-section 'A gauche' with a dropdown set to 'Conserver les espaces', and a sub-section 'A droite' with a dropdown set to 'Supprimer les espaces'. At the bottom are 'OK' and 'Cancel' buttons.

Numbers

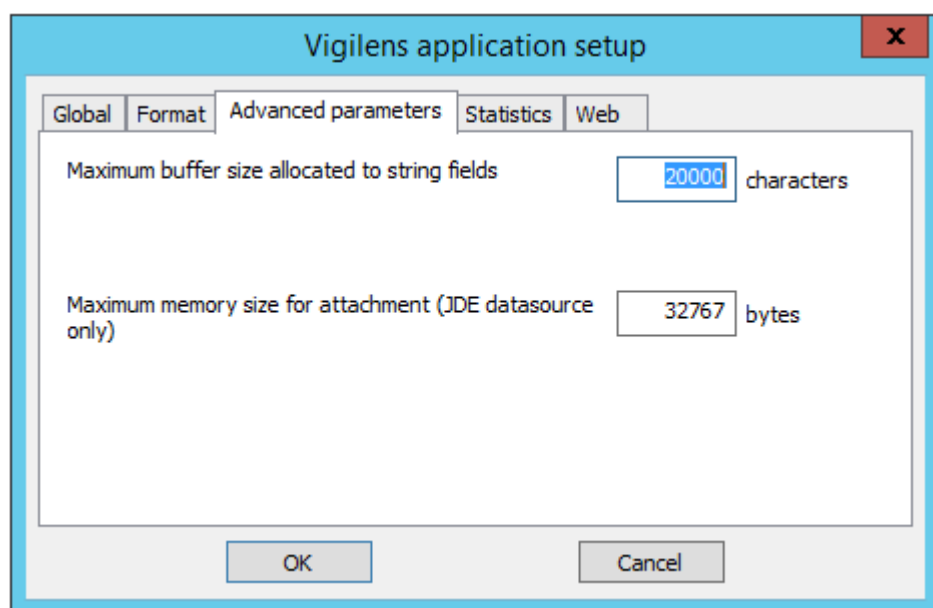


The 'Format' dialog box for Numbers data type has a light blue title bar with a close button (X) in the top right corner. The main content area is light gray and contains two rows of settings. The first row has a dropdown set to 'Use decimal separator set at Windows level' and a small gray box with a dropdown arrow. The second row has a dropdown set to 'Do not display thousand separator' and another small gray box with a dropdown arrow. At the bottom are 'OK' and 'Cancel' buttons.

Dates



Advanced parameters

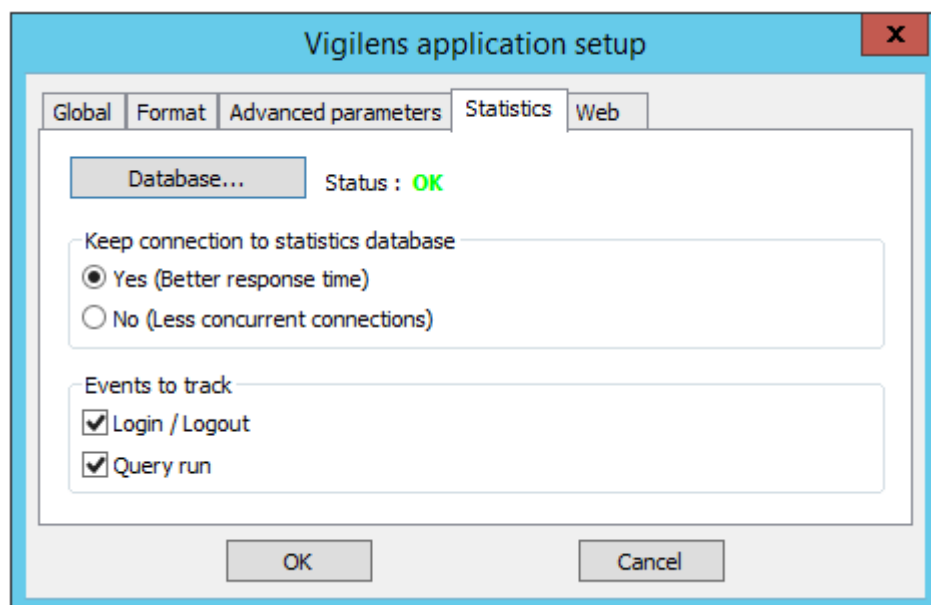


- Maximum buffer size allocated to string fields: Maximum number of characters that can be displayed for a text field. Characters beyond this number are truncated.
NB: The higher this value, the higher the response time for data extraction may be.
- Maximum memory size for attachment (JDE datasource only): This option is valid only for JDE data sources. It defines to the maximum memory size (in bytes) used to display "Text" type appendices.
Nb: If this value is too small for the display of a given appendice, the minimum value required is displayed instead of the text of the appendix. **#ERROR# (Minimum buffer size needed : 1150)**

Statistics

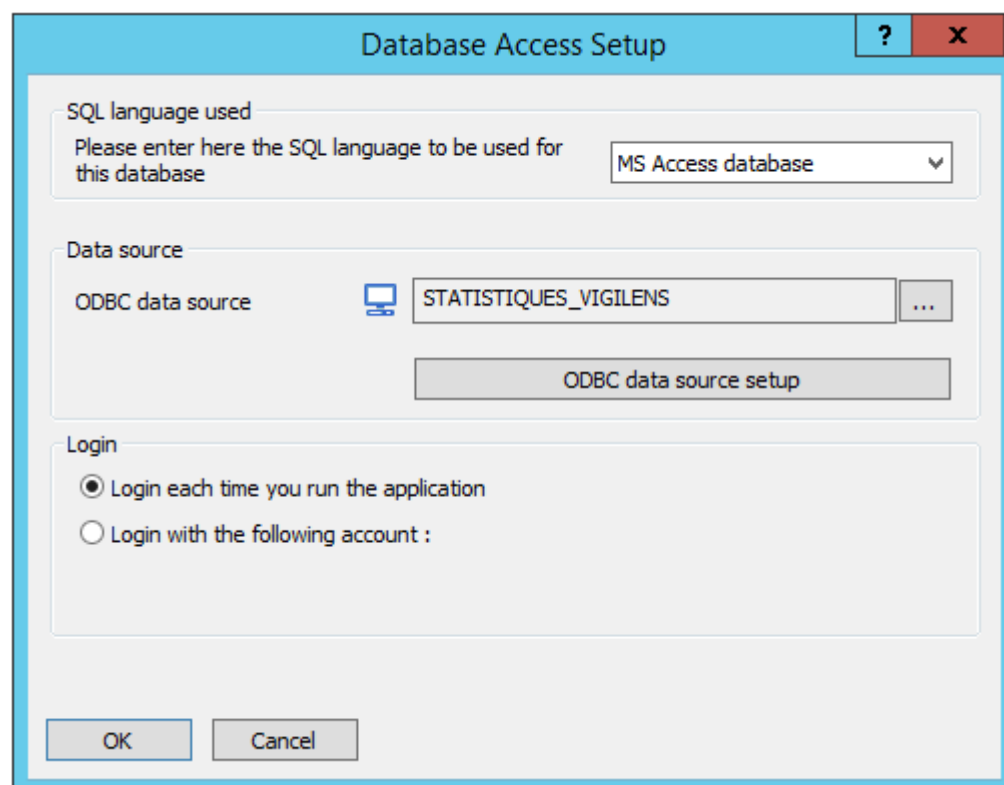
Activating statistics allows you to define a database in which Vigilens will record information about

connections and queries runs.



Once the database is defined, Vigilens connects to it and creates two tables (VIGILENS_CONNECT and VIGILENS_EXEC). If everything went well, the status becomes "OK" and it is then possible to choose if you want to stay connected or not and which elements you want to log (connections and/or query run).

Database



The configuration of the database is similar to that of a database used to make queries (see [Setup menu > Application](#)).



WARNING : Once the statistics are activated, it is no longer possible to connect to a Vigilens application if it does not have access to the statistics database.
If Vigilens is installed on several machines, it is mandatory to check that the statistics database will be accessible from all machines before activating the statistics. In particular, it is necessary to make sure that the ODBC (or OCI) drivers are installed on all machines.

Web

Vigilens application setup

Global Format Advanced parameters Statistics **Web**

URL for Vigilens Web server (e.g. <http://ServerName:port/vigilens>)

Folder with Monitor files

OK Cancel

In this screen, entering the Vigilens Web URL allows you to obtain complete URLs via the menu [Command line](#).

From:
<https://vigilens.wiki/dokuwiki/> - **Vigilens Reporting Knowledge Garden**

Permanent link:
https://vigilens.wiki/dokuwiki/doku.php?id=en:v8_0_0:admintool:menus:accueil:vigilens:start&rev=1599126863

Last update: **2020/09/03 11:54**

