

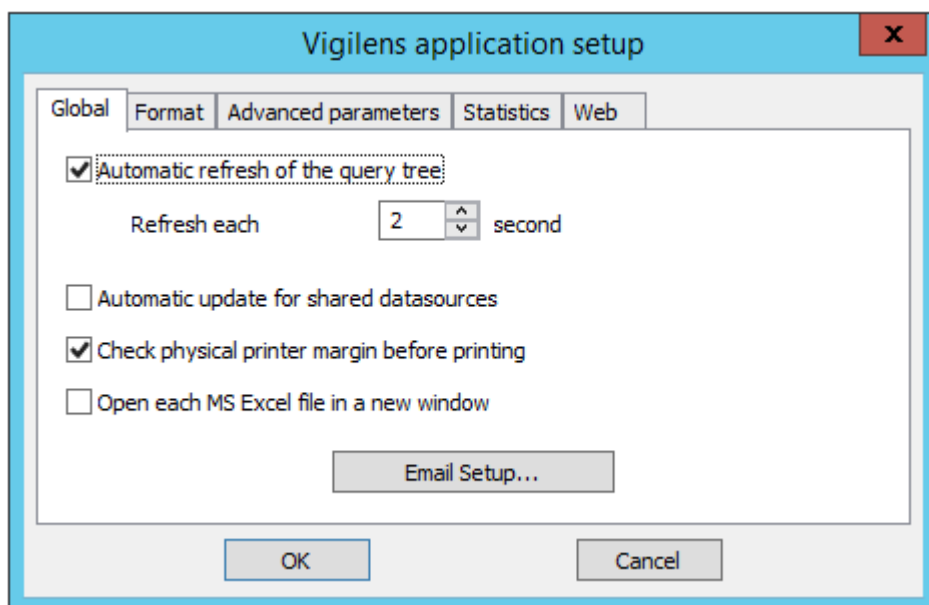
# Home Menu > Vigilens

The parameters entered at this level are common to all the machines on which the Vigilens application is installed (including Vigilens Web). It is stored in the “Vigilens.EVIDENS-Parameter” file located in the root of the shared directory.



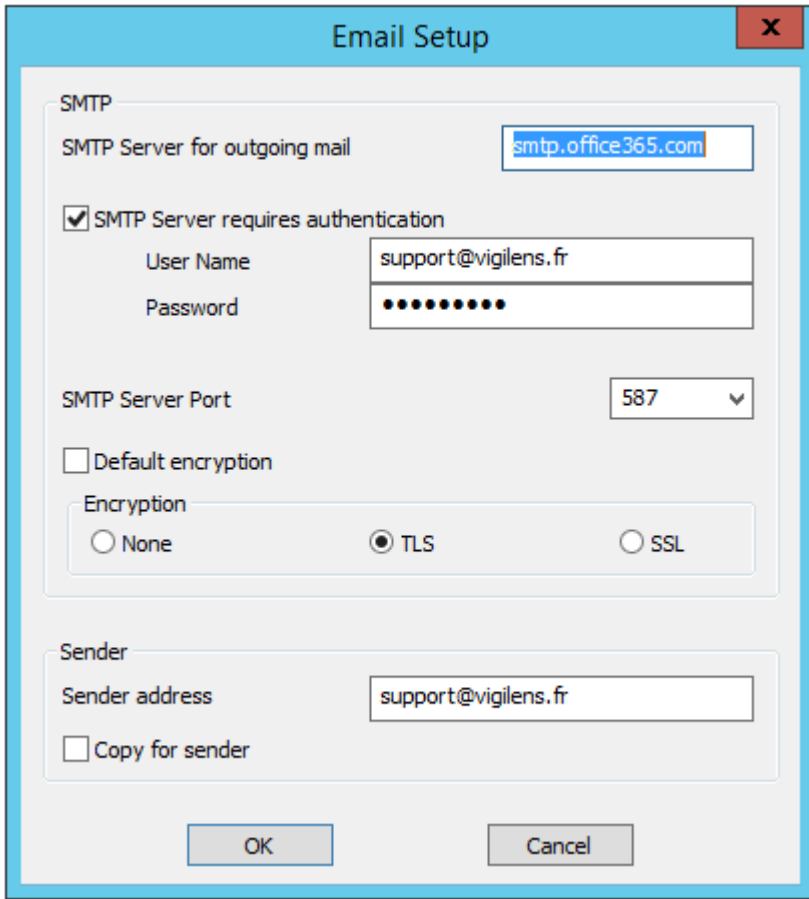
It is possible to return to the default setting by deleting the “Vigilens.EVIDENS-Parameter” file present at the root of the shared directory.

## Global



- Automatic refresh of the query tree : Allows you to delete/enable the automatic update of the list of queries (user and shared) displayed in the Vigilens Designer application. If the update is activated, it is possible to specify the refresh frequency.
- Automatic update for shared datasources: If this option is activated, all shared data sources are systematically re-imported when the Vigilens Designer application is launched.  
NB: Except in special cases, it is preferable not to activate this option.
- Check physical printer margins before printing: During a “Print” output, displays a warning message if some elements to be displayed are located outside the printable area.
- Open each MS-Excel file in a new window : During a “Excel File” output, displays the generated file in a new Excel instance rather than using an existing instance (which can be a problem if the existing instance is in use).

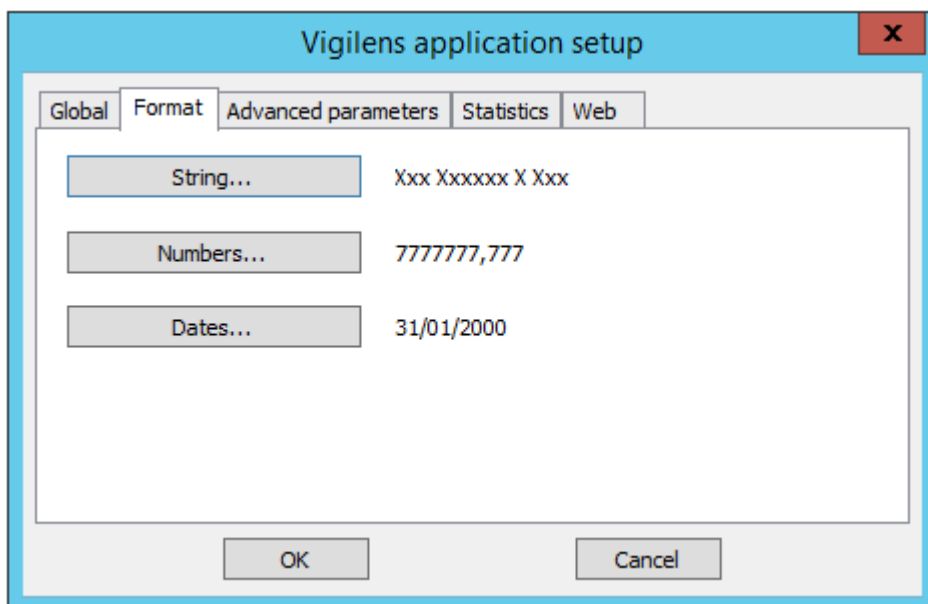
## Mail setup



Smtplib server setting that will be used for “Send mail” outputs as well as the sender appearing in the mail.

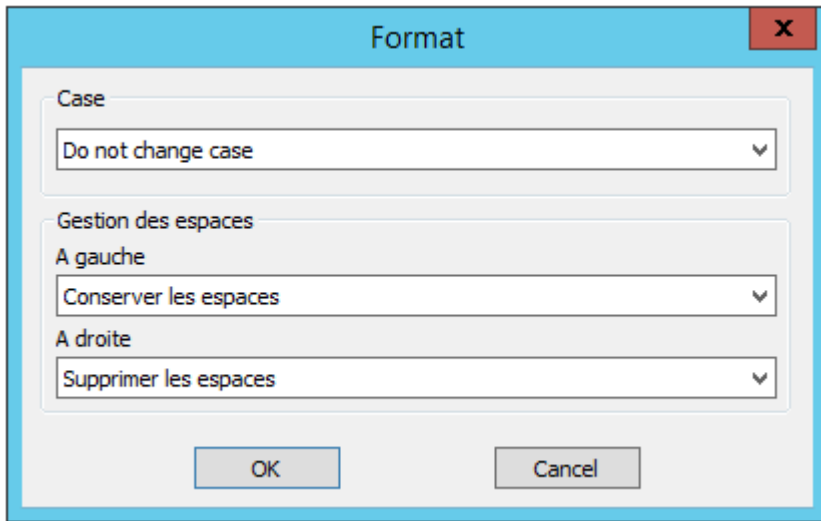
NB: This default setting can be redefined at the level of each group, each user and even in each query (at the level of the output setting).

## Format

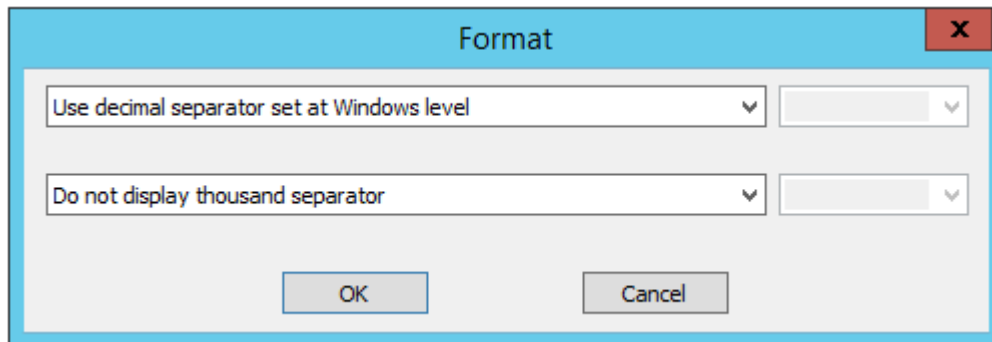


Allows you to set the default formatting for each type of data. This setting can be redefined at the level of each group, each user and each field of each query.

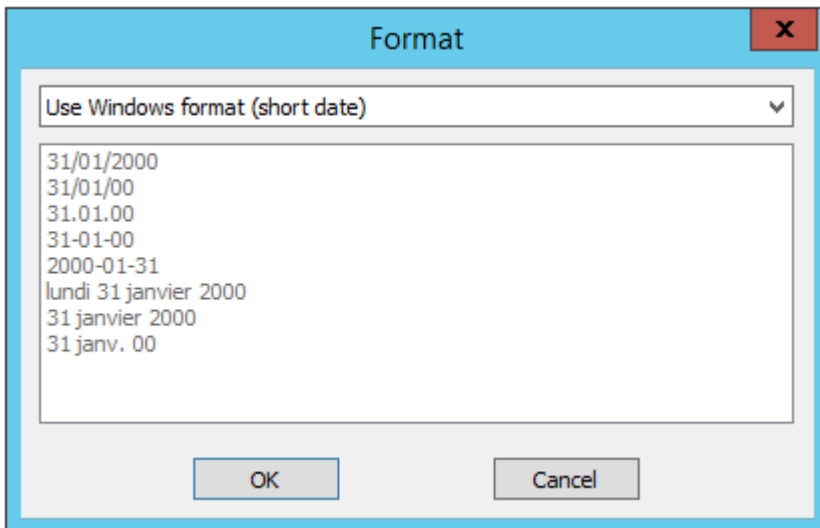
### String



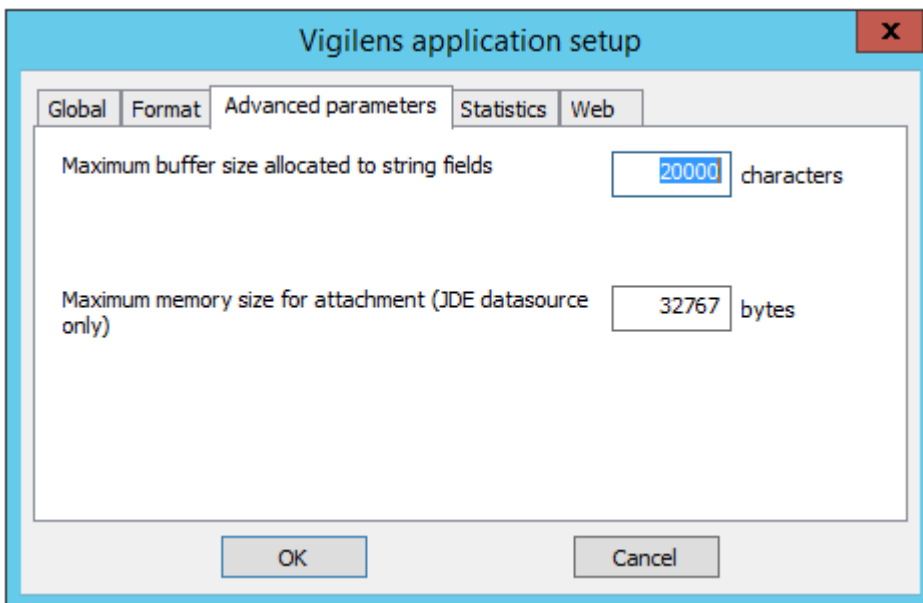
### Numbers



### Dates

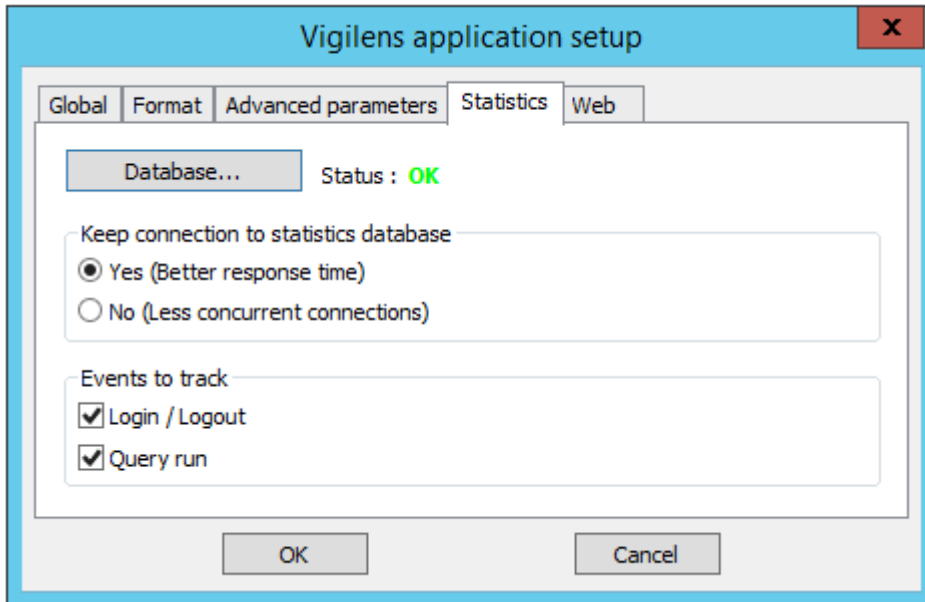


## Advanced parameters

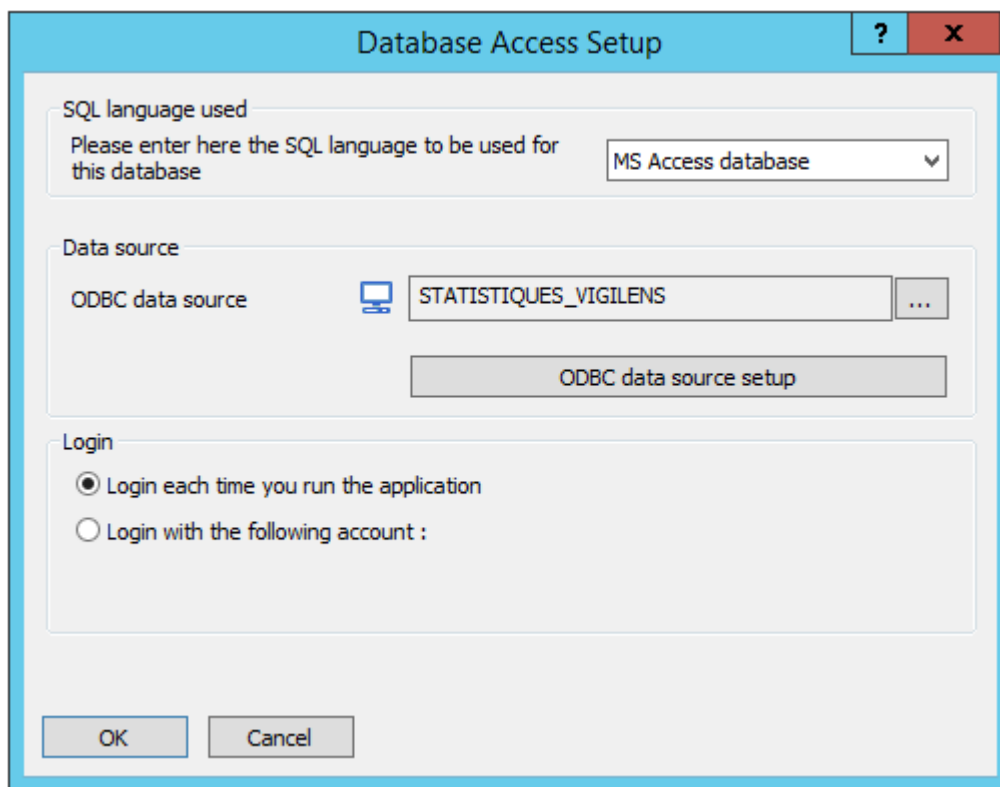


- Maximum buffer size allocated to string fields: Maximum number of characters that can be displayed for a text field. Characters beyond this number are truncated.  
NB: The higher this value, the higher the response time for data extraction may be.
- Maximum memory size for attachment (JDE datasource only): This option is valid only for JDE data sources. It defines to the maximum memory size (in bytes) used to display "Text" type appendices.  
Nb: If this value is too small for the display of a given appendice, the minimum value required is displayed instead of the text of the appendix. #ERROR# (Minimum buffer size needed : 1150)

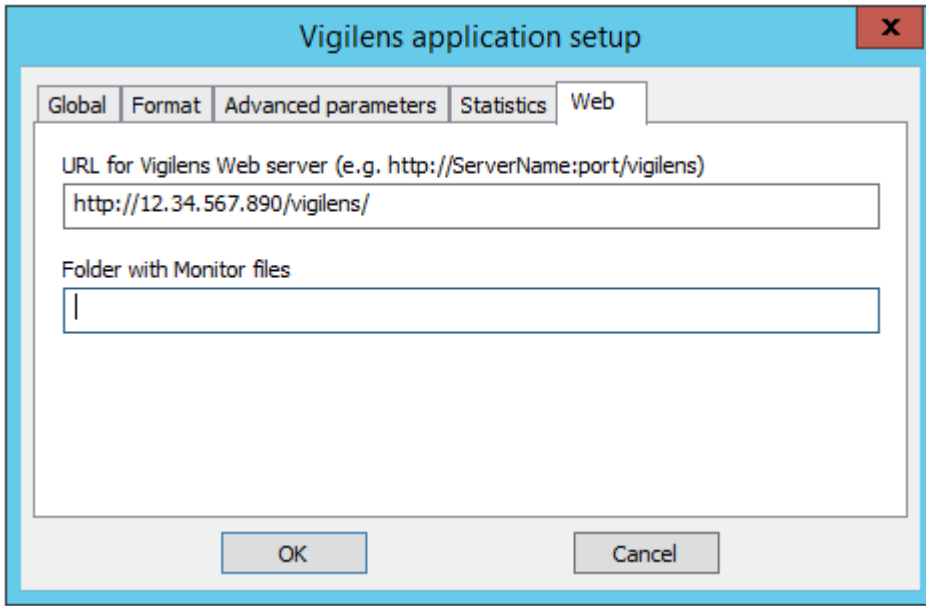
## Statistics



## Database



## Web



**Vigilens application setup**

Global | Format | Advanced parameters | Statistics | **Web**

URL for Vigilens Web server (e.g. http://ServerName:port/vigilens)

Folder with Monitor files

OK Cancel

From: <https://vigilens.wiki/dokuwiki/> - **Vigilens Reporting Knowledge Garden**

Permanent link: [https://vigilens.wiki/dokuwiki/doku.php?id=en:v8\\_0\\_0:admintool:menus:accueil:vigilens:start&rev=1599126512](https://vigilens.wiki/dokuwiki/doku.php?id=en:v8_0_0:admintool:menus:accueil:vigilens:start&rev=1599126512)

Last update: **2020/09/03 11:48**

