

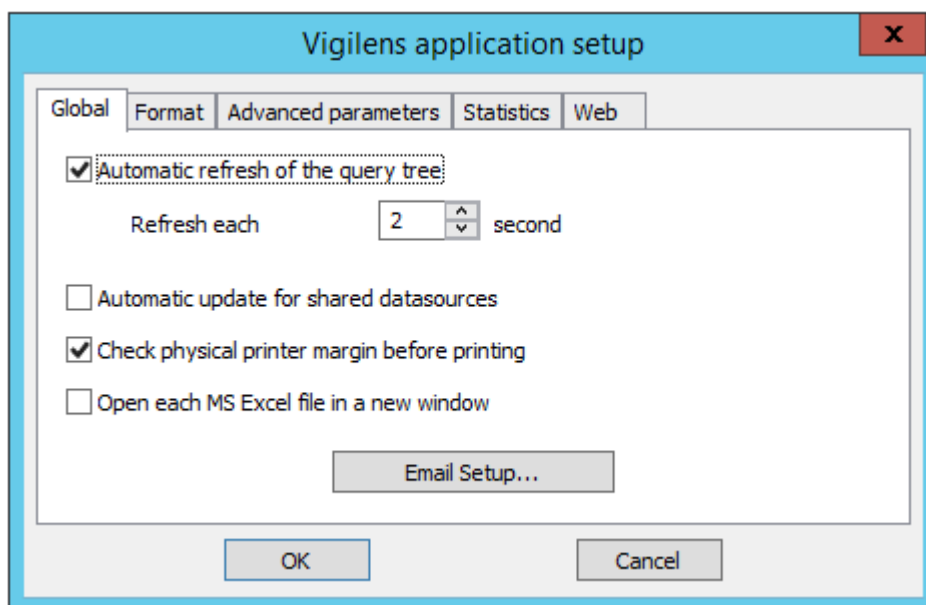
Home Menu > Vigilens

The parameters entered at this level are common to all the machines on which the Vigilens application is installed (including Vigilens Web). It is stored in the “Vigilens.EVIDENS-Parameter” file located in the root of the shared directory.



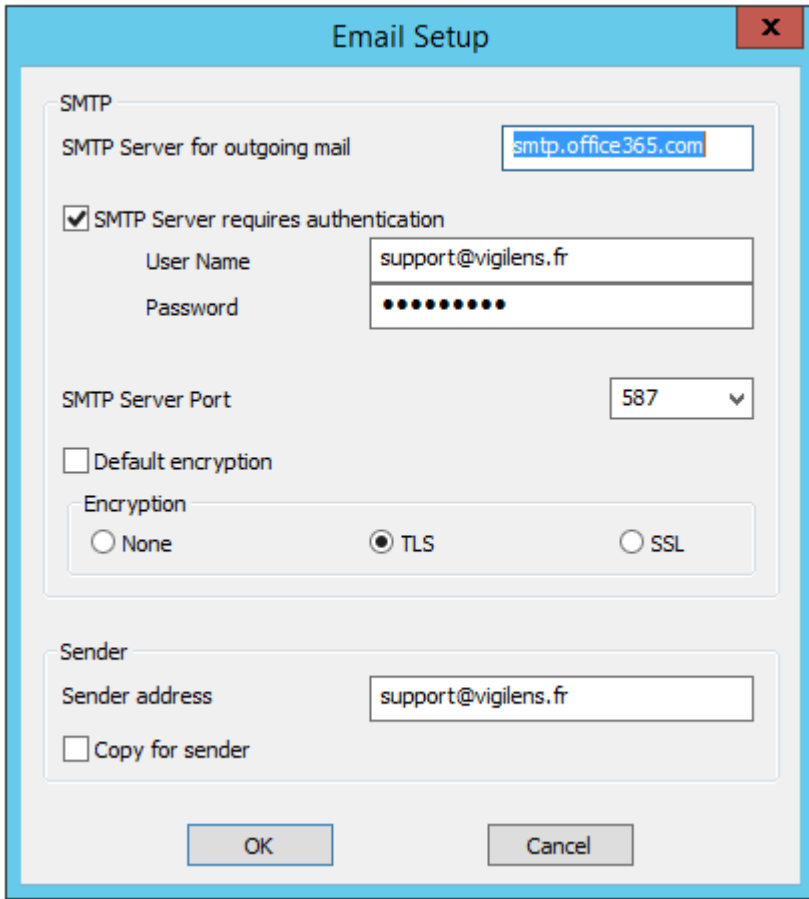
It is possible to return to the default setting by deleting the “Vigilens.EVIDENS-Parameter” file present at the root of the shared directory.

Global



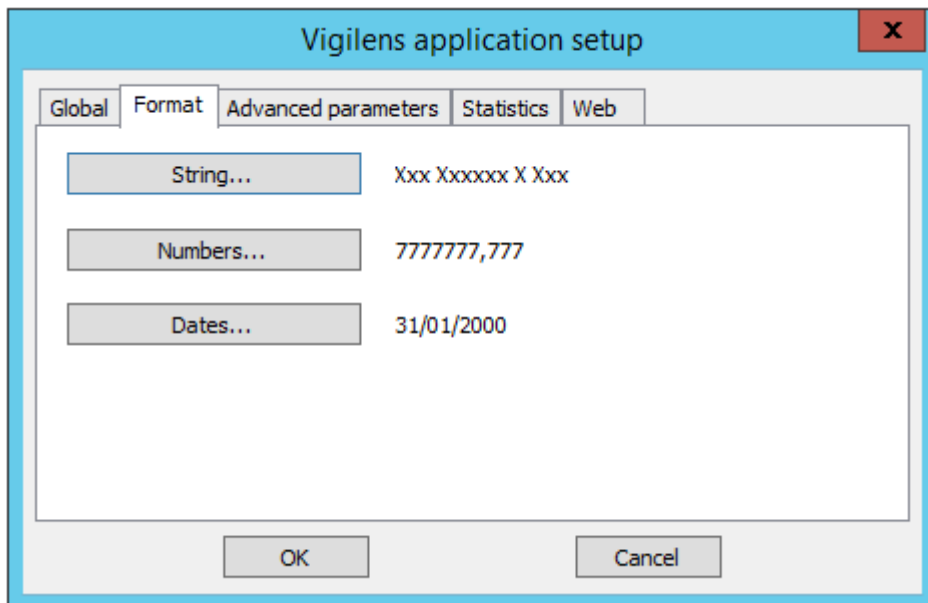
- Automatic refresh of the query tree : Allows you to delete/enable the automatic update of the list of queries (user and shared) displayed in the Vigilens Designer application. If the update is activated, it is possible to specify the refresh frequency.
- Automatic update for shared datasources: If this option is activated, all shared data sources are systematically re-imported when the Vigilens Designer application is launched.
NB: Except in special cases, it is preferable not to activate this option.
- Check physical printer margins before printing: During a “Print” output, displays a warning message if some elements to be displayed are located outside the printable area.
- Open each MS-Excel file in a new window : During a “Excel File” output, displays the generated file in a new Excel instance rather than using an existing instance (which can be a problem if the existing instance is in use).

Mail setup



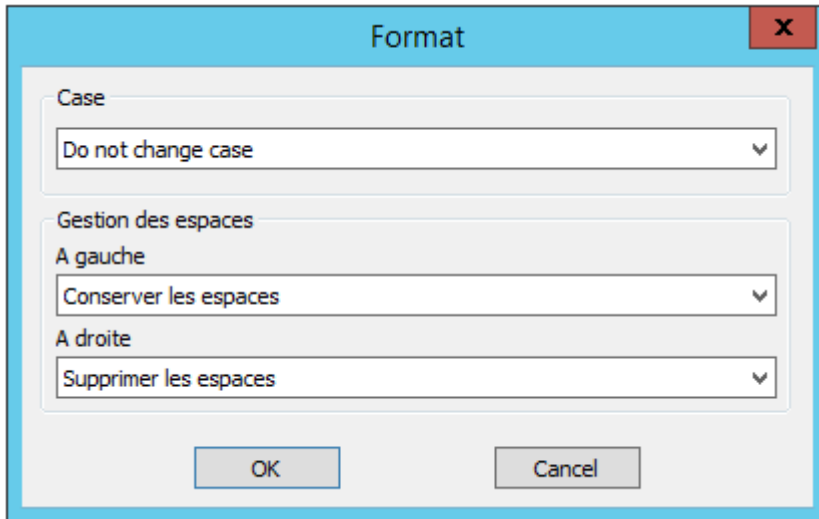
The 'Email Setup' dialog box is used for configuring outgoing mail. It features a title bar with a close button (X). The main content is organized into two sections: SMTP and Sender. The SMTP section includes a text field for the SMTP server (smtp.office365.com), a checked checkbox for authentication, fields for user name (support@vigilens.fr) and password (masked with dots), a dropdown for the SMTP port (587), and an unchecked checkbox for default encryption. The encryption options are radio buttons for None, TLS (selected), and SSL. The Sender section includes a text field for the sender address (support@vigilens.fr) and an unchecked checkbox for 'Copy for sender'. At the bottom, there are 'OK' and 'Cancel' buttons.

Format

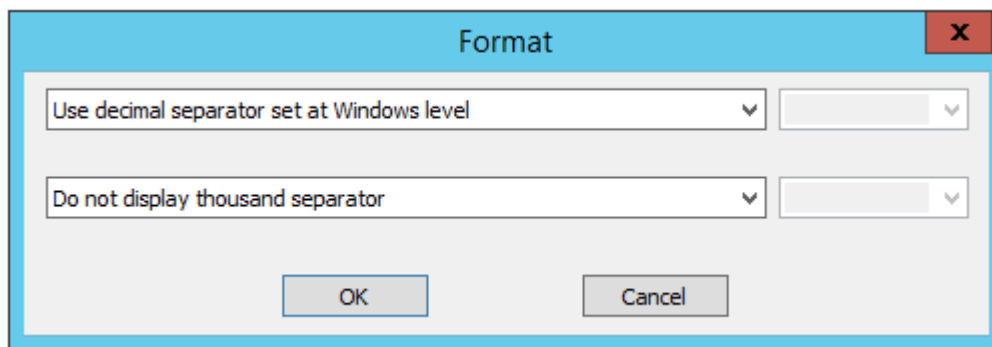


The 'Vigilens application setup' dialog box has a title bar with a close button (X). It features a tabbed interface with tabs for 'Global', 'Format', 'Advanced parameters', 'Statistics', and 'Web'. The 'Format' tab is active, showing three rows of configuration: 'String...' with the format 'Xxx Xxxxxx X Xxx', 'Numbers...' with '7777777,777', and 'Dates...' with '31/01/2000'. At the bottom, there are 'OK' and 'Cancel' buttons.

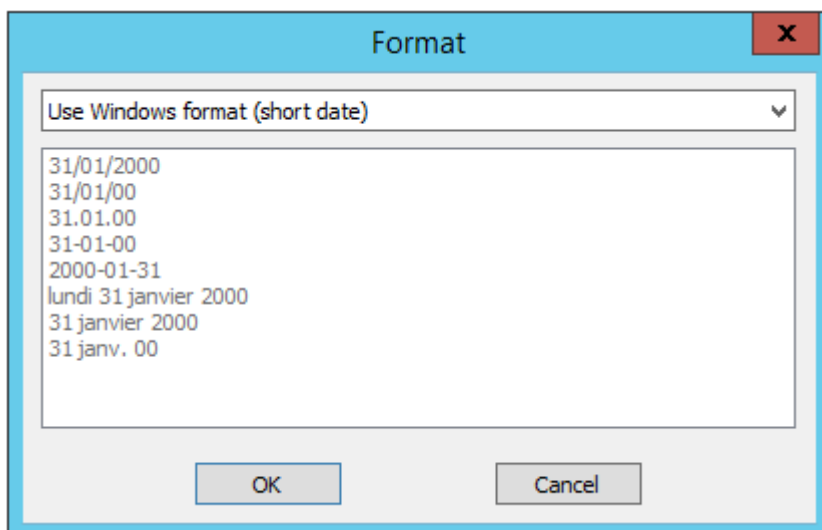
String



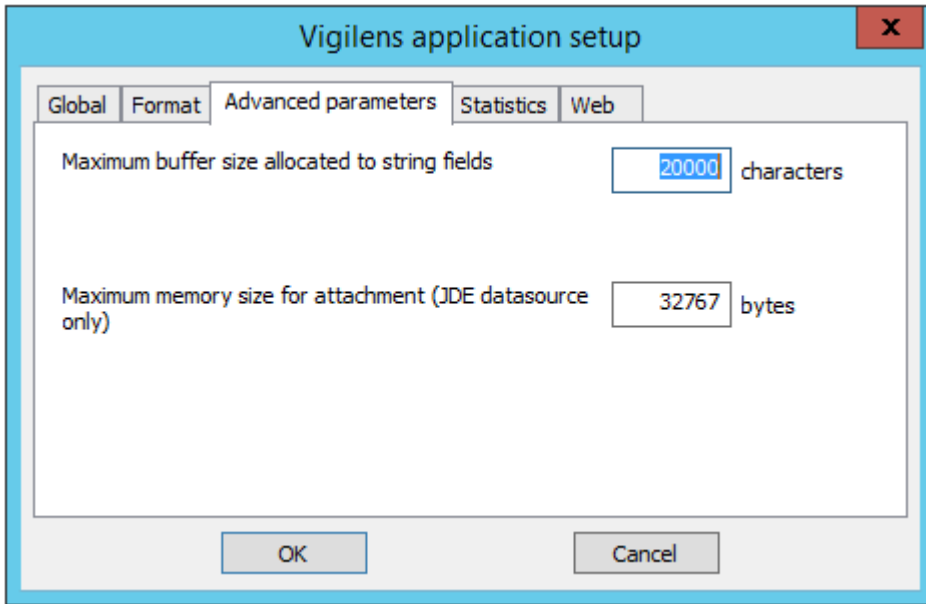
Numbers



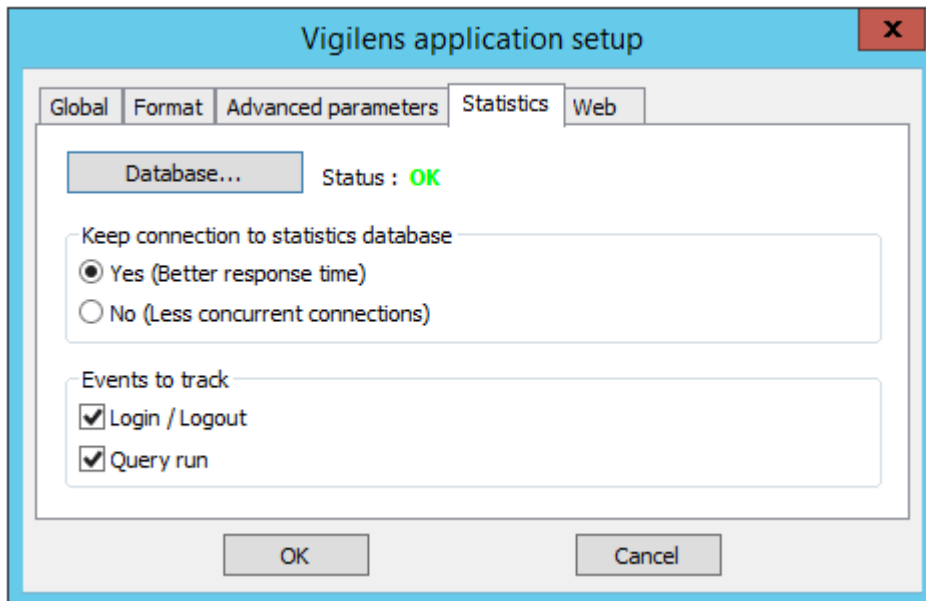
Dates



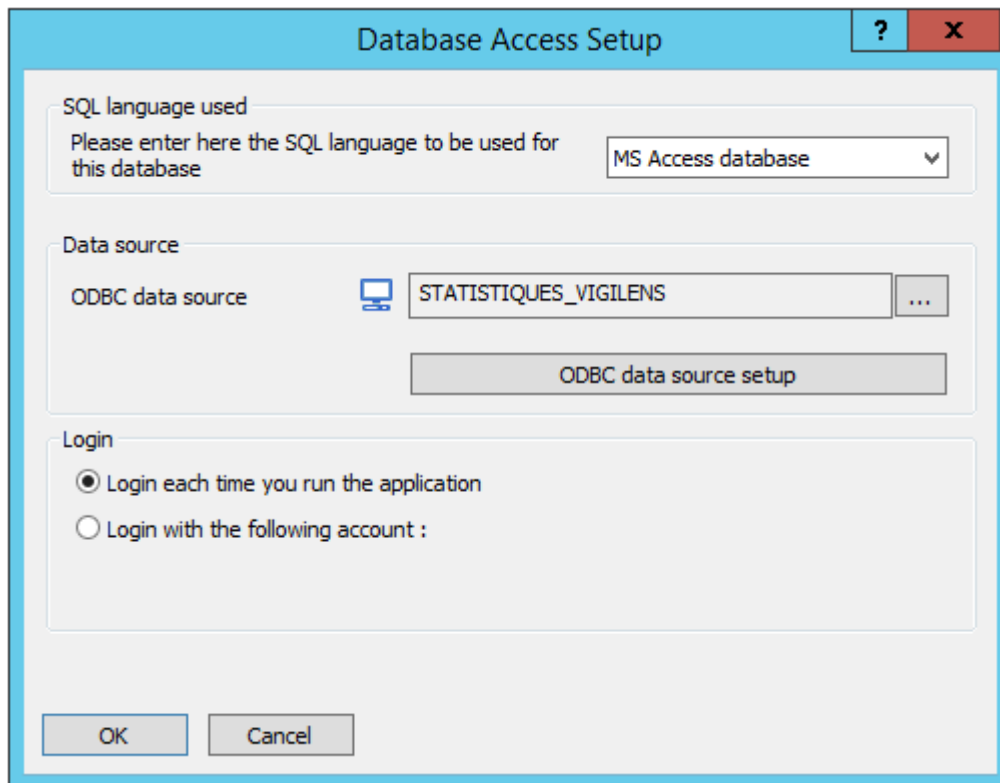
Advanced parameters



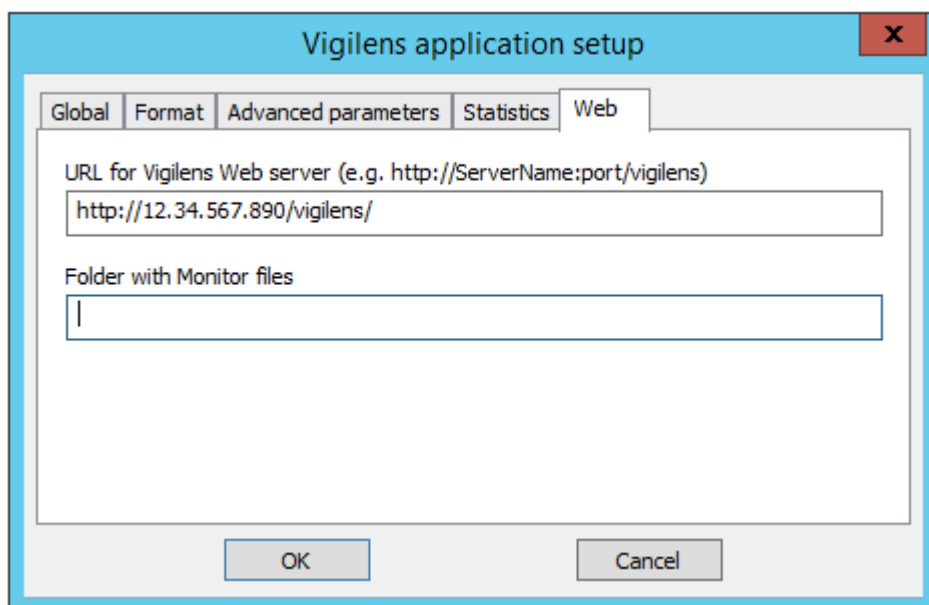
Statistics



Database



Web



From: <https://vigilens.wiki/dokuwiki/> - Vigilens Reporting Knowledge Garden

Permanent link: https://vigilens.wiki/dokuwiki/doku.php?id=en:v8_0_0:admintool:menus:accueil:vigilens:start&rev=1599126054

Last update: 2020/09/03 11:40

