

Home menu

Parameter

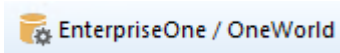


Application



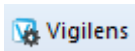
[Setting up the databases and the AdminTool interface](#)

EnterpriseOne / Oneworld



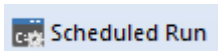
[Link between physical data and JDE/World structure](#)

Vigilens

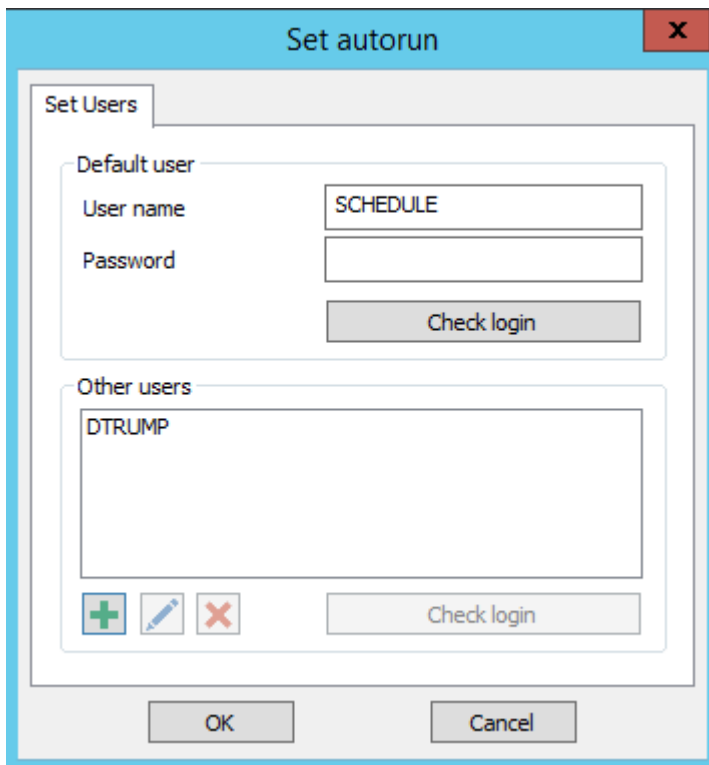


[Vigilens GUI setup](#)

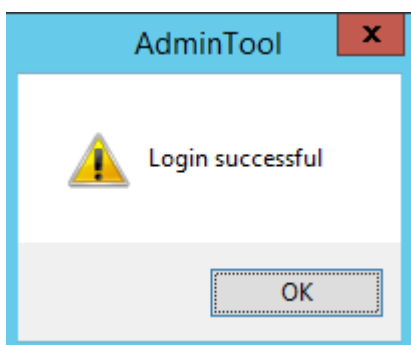
Scheduled Run






This menu allows you to specify the users authorized to schedule a report run. [See scheduling dedicated page.](#)

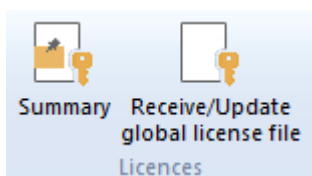


- The top part allows you to enter the default user.
- The button Check Login tests that the combination user / password is correct.



- The bottom part allows you to enter the other authorized users.
 - The    buttons allow you to respectively add, modify or delete one of the Other Users.
 - The button Check Login tests that the combination user / password is correct.

Licence



Manage and review your licence informations.

VIGILENS Designer and VIGILENS Viewer license management

Vigilens Designer

1 Designer license = 1 connection to Vigilens Designer

If all Designer licenses are used then Vigilens offers you a connection in Viewer and in this case 1 Viewer license = 1 connection to Vigilens Designer.

Vigilens AdminTool

1 connection at a time without license consumption

Vigilens Web

if connection via Vigilens Web then
1 viewer license = 1 Vigilens User / 1 Browser

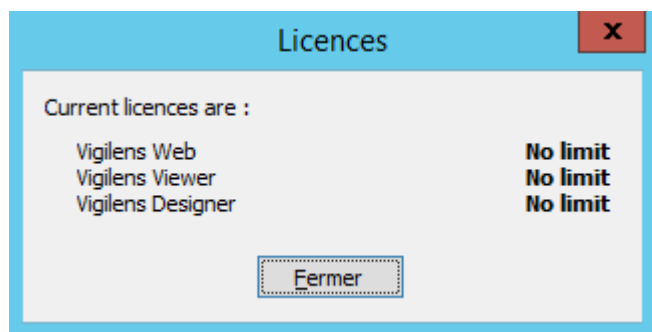


In case of unclean disconnection (machine crash, browser bug etc...) the Vigilens Viewer license will be automatically released after X min (the value of X is configurable in the WebConfig tools).



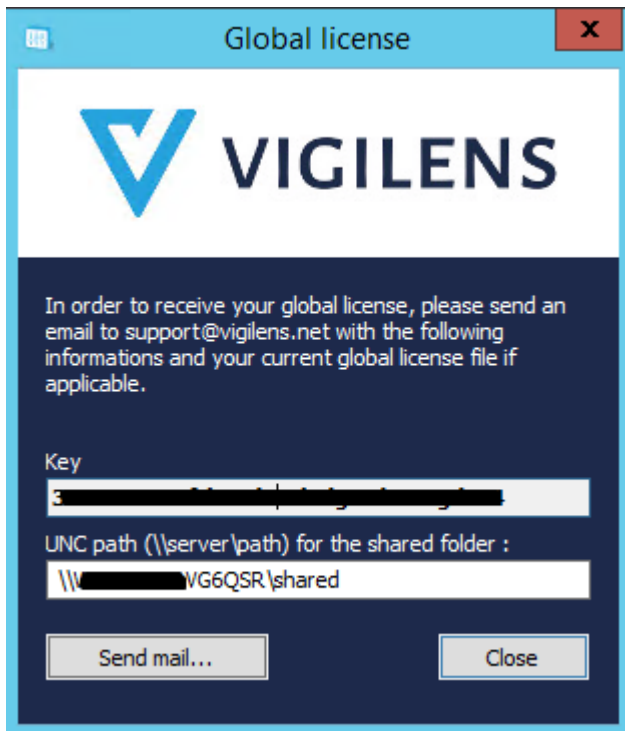
The use of Vigilens Web in JDE's EonePage and CafeOne is not yet validated.

Summary



Viewing the contents of the license files "LicenseGen.evsn" and "LicenseGen.dat".

Receive/update global license file



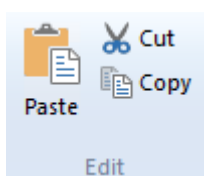
A dialog box specifying the key corresponding to your global license is displayed. Enter the UNC path corresponding to your shared directory and send this information to the following address **support@vigilens.net**.

You can use the button Send a mail... if a mail client is installed on the computer or if the information corresponding to the mail settings (see mail setup).).

Otherwise you can copy the key by copy/paste to avoid typing errors.

You will receive in return the files "LicenseGen.avs" and "LicenseGen.dat" that you will have to put in the shared directory.

Edit



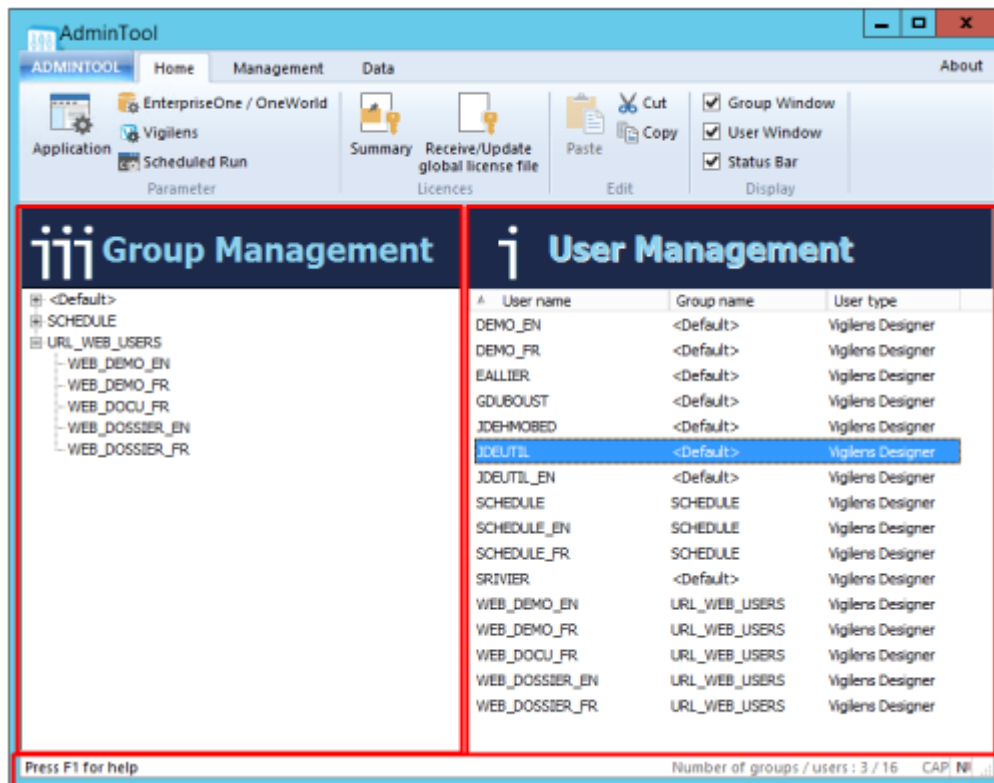
Classical edit menu

Display

- Group Window
- User Window
- Status Bar

Display

Check boxes allow you to hide/show panels or status bar.



From: <https://vigilens.wiki/dokuwiki/> - **Vigilens Reporting Knowledge Garden**

Permanent link: https://vigilens.wiki/dokuwiki/doku.php?id=en:v8_0_0:admintool:menus:accueil:start&rev=1600072208

Last update: 2020/09/14 10:30

