

Home menu

Parameter

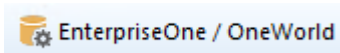


Application



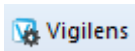
[Setting up the databases and the AdminTool interface](#)

EnterpriseOne / Oneworld



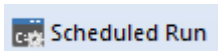
[Link between physical data and JDE/World structure](#)

Vigilens

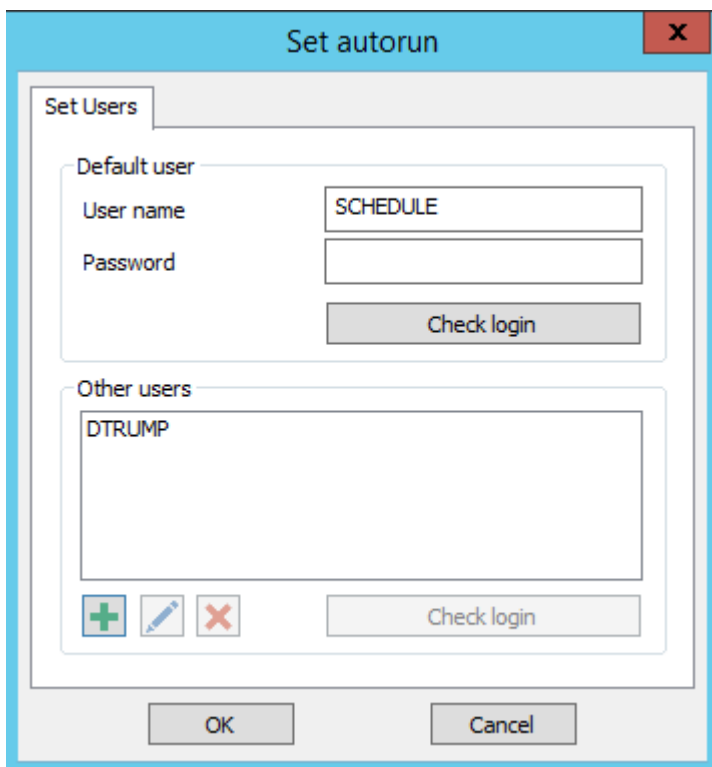


[Vigilens GUI setup](#)

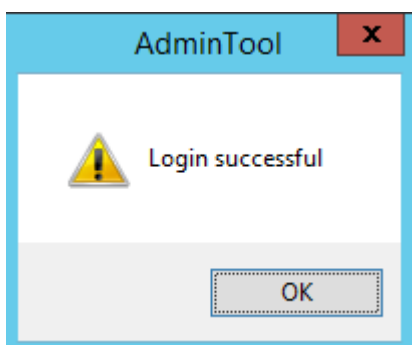
Scheduled Run






This menu allows you to specify the users authorized to schedule a report run. [See scheduling dedicated page.](#)

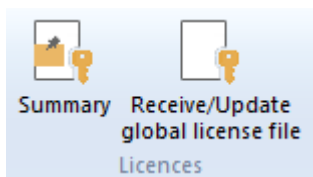


- The top part allows you to enter the default user.
- The button Check Login tests that the combination user / password is correct.



- The bottom part allows you to enter the other authorized users.
 - The    buttons allow you to respectively add, modify or delete one of the Other Users.
 - The button Check Login tests that the combination user / password is correct.

Licence



Manage and review your licence informations.

Summary



Viewing the contents of the license files "LicenseGen.evs" and "LicenseGen.dat".

VIGILENS Designer and VIGILENS Viewer license management

Vigilens Designer

1 Designer license = 1 connection to Vigilens Designer

If all Designer licenses are used then Vigilens offers you a connection in Viewer and in this case *1 Viewer license = 1 connection to Vigilens Designer*.

Vigilens AdminTool

1 connection at a time without license consumption

Vigilens AdminTool

if connection via Vigilens Web then

1 viewer license = 1 Vigilens User / 1 Browser

If connection via "command line" (example, JDE menu) then

1 viewer license = 1 call

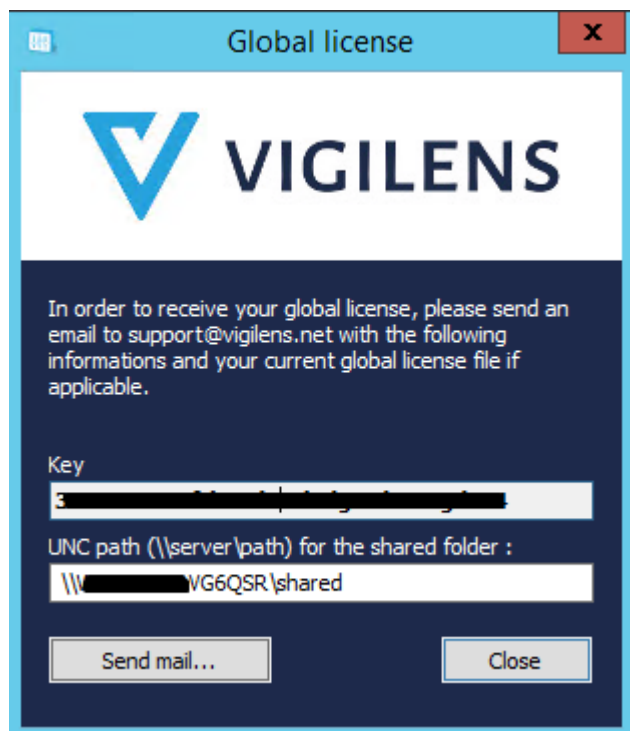


In case of unclean disconnection (machine crash, browser bug etc...) the Vigilens Viewer license will be automatically released after X min (the value of X is configurable in the WebConfig tools).



The use of Vigilens Web in JDE's EonePage and CafeOne is not yet validated.

Receive/update global license file



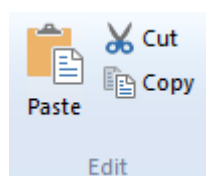
A dialog box specifying the key corresponding to your global license is displayed. Enter the UNC path corresponding to your shared directory and send this information to the following address **support@vigilens.net**.

You can use the button `Send a mail...` if a mail client is installed on the computer or if the information corresponding to the mail settings ([see mail setup](#)).

Otherwise you can copy the key by copy/paste to avoid typing errors.

You will receive in return the files “LicenseGen.evsn” and “LicenseGen.dat” that you will have to put in the shared directory.

Edit



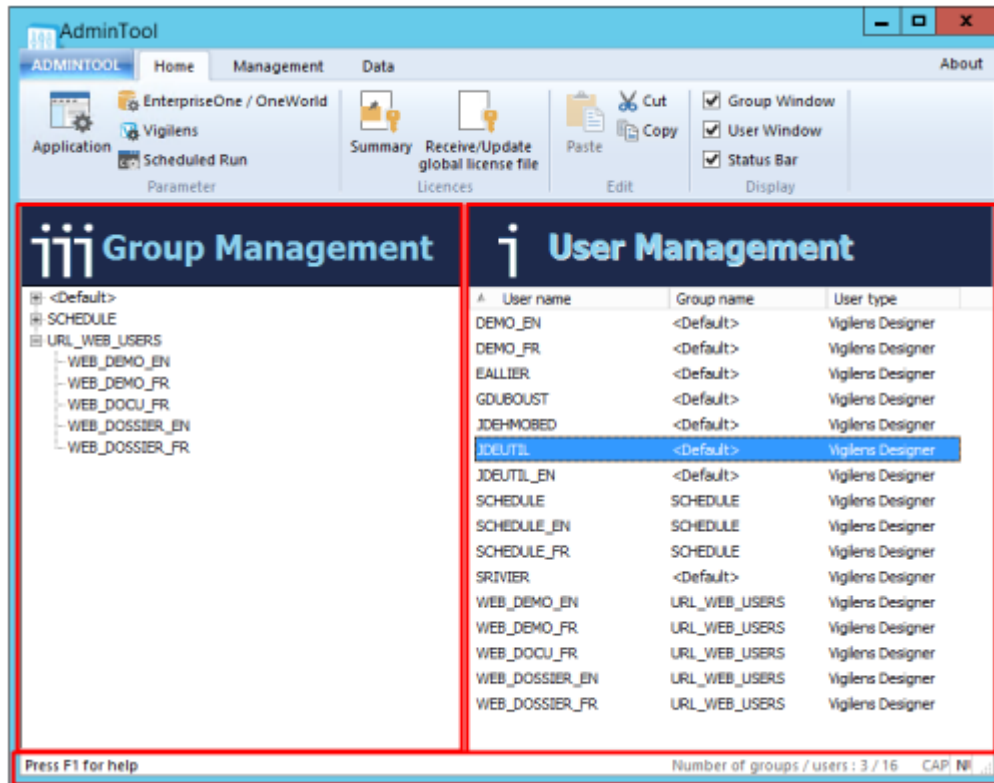
Classical edit menu

Display

- Group Window
- User Window
- Status Bar

Display

Check boxes allow you to hide/show panels or status bar.



From: <https://vigilens.wiki/dokuwiki/> - **Vigilens Reporting Knowledge Garden**

Permanent link: https://vigilens.wiki/dokuwiki/doku.php?id=en:v8_0_0:admintool:menus:accueil:start&rev=1594891003

Last update: **2020/07/16 11:16**

