

# Home menu

## Parameter

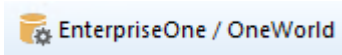


## Application



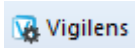
[Setting up the databases and the AdminTool interface](#)

## EnterpriseOne / Oneworld



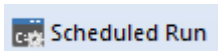
[Link between physical data and JDE/World structure](#)

## Vigilens

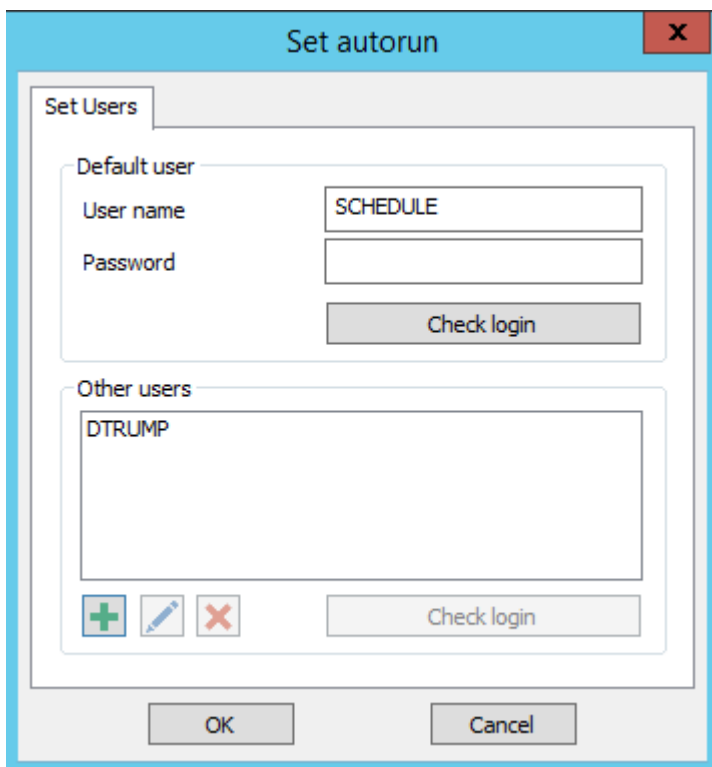


[Vigilens GUI setup](#)

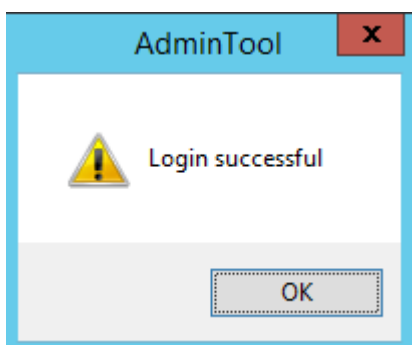
## Scheduled Run






This menu allows you to specify the users authorized to schedule a report run. [See scheduling dedicated page.](#)

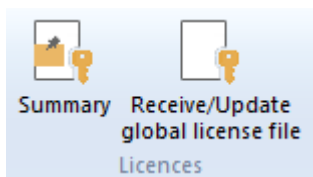


- The top part allows you to enter the default user.
  - The button Check Login tests that the combination user / password is correct.



- The bottom part allows you to enter the other authorized users.
  - The    buttons allow you to respectively add, modify or delete one of the Other Users.
  - The button Check Login tests that the combination user / password is correct.

## Licence



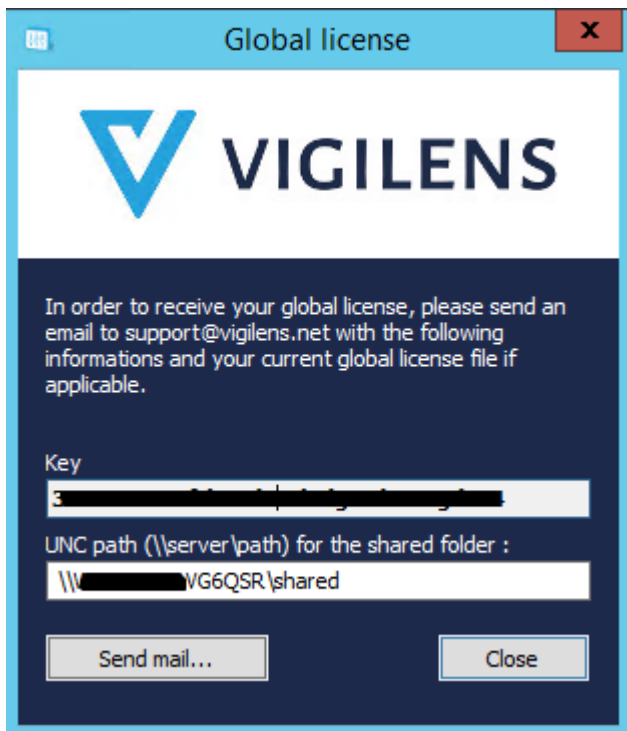
Manage and review your licence informations.

## Summary



Viewing the contents of the license files "LicenseGen.evs" and "LicenseGen.dat".

## Receive/update global license file



A dialog box specifying the key corresponding to your global license is displayed. Enter the UNC path corresponding to your shared directory and send this information to the following address **support@vigilens.net**.

You can use the button Send a mail... if a mail client is installed on the computer or if the information corresponding to the mail settings (see mail setup ). ).

Otherwise you can copy the key by copy/paste to avoid typing errors.

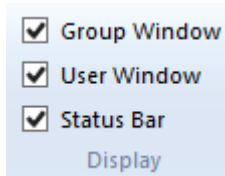
You will receive in return the files "LicenseGen.evs" and "LicenseGen.dat" that you will have to put in the shared directory.

## Edit



Classical edit menu

## Display



Check boxes allow you to hide/show panels or status bar.

The screenshot shows the AdminTool application window. The top menu bar includes 'ADMINTOOL', 'Home', 'Management', 'Data', and 'About'. Below the menu bar is a toolbar with icons for 'Application', 'EnterpriseOne / OneWorld', 'Vigilens', 'Scheduled Run', 'Summary', 'Licences', 'Receive/Update global license file', 'Edit', and 'Display'. The 'Display' section of the toolbar has three checked checkboxes: 'Group Window', 'User Window', and 'Status Bar'. The main content area is divided into two panels: 'Group Management' on the left and 'User Management' on the right. The 'Group Management' panel shows a tree view with a root '<Default>' and several sub-items under 'URL\_WEB\_USERS'. The 'User Management' panel shows a table of users with columns for 'User name', 'Group name', and 'User type'. The 'JDEUTIL' user is highlighted in blue. At the bottom of the window, there is a status bar that says 'Press F1 for help' on the left and 'Number of groups / users : 3 / 16 CAP NI ...' on the right.

| User name      | Group name    | User type         |
|----------------|---------------|-------------------|
| DEMO_EN        | <Default>     | Vigilens Designer |
| DEMO_FR        | <Default>     | Vigilens Designer |
| EALLIER        | <Default>     | Vigilens Designer |
| GDUBOUST       | <Default>     | Vigilens Designer |
| JDEHMOBED      | <Default>     | Vigilens Designer |
| <b>JDEUTIL</b> | <Default>     | Vigilens Designer |
| JDEUTIL_EN     | <Default>     | Vigilens Designer |
| SCHEDULE       | SCHEDULE      | Vigilens Designer |
| SCHEDULE_EN    | SCHEDULE      | Vigilens Designer |
| SCHEDULE_FR    | SCHEDULE      | Vigilens Designer |
| SRIVIER        | <Default>     | Vigilens Designer |
| WEB_DEMO_EN    | URL_WEB_USERS | Vigilens Designer |
| WEB_DEMO_FR    | URL_WEB_USERS | Vigilens Designer |
| WEB_DOCU_FR    | URL_WEB_USERS | Vigilens Designer |
| WEB_DOSSIER_EN | URL_WEB_USERS | Vigilens Designer |
| WEB_DOSSIER_FR | URL_WEB_USERS | Vigilens Designer |

From:  
<https://vigilens.wiki/dokuwiki/> - **Vigilens Reporting Knowledge Garden**

Permanent link:  
[https://vigilens.wiki/dokuwiki/doku.php?id=en:v8\\_0\\_0:admintool:menus:accueil:start&rev=1594391674](https://vigilens.wiki/dokuwiki/doku.php?id=en:v8_0_0:admintool:menus:accueil:start&rev=1594391674)

Last update: **2020/07/10 16:34**

