

# Home menu

## Parameter

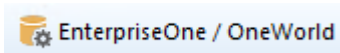


## Application



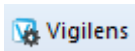
[Setting up the databases and the AdminTool interface](#)

## EnterpriseOne / Oneworld



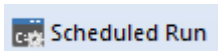
[Link between physical data and JDE/World structure](#)

## Vigilens

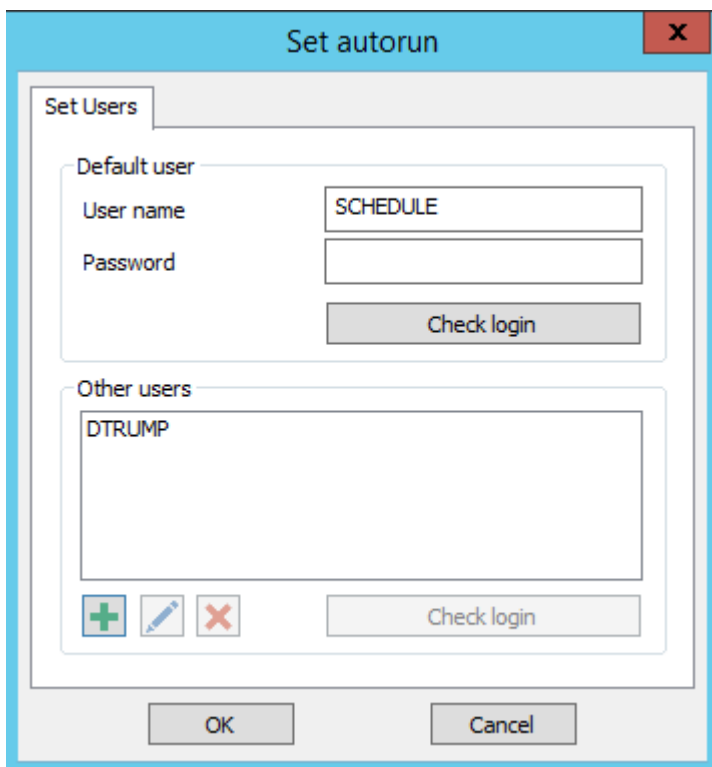


[Vigilens GUI setup](#)

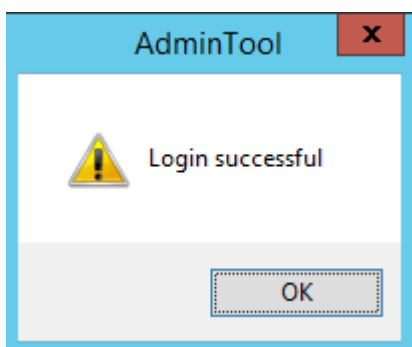
## Scheduled Run






This menu allows you to specify the users authorized to schedule a report run. [See scheduling dedicated page.](#)

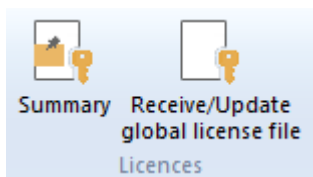


- The top part allows you to enter the default user.
  - The button Check Login tests that the combination user / password is correct.



- The bottom part allows you to enter the other authorized users.
  - The    buttons allow you to respectively add, modify or delete one of the Other Users.
  - The button Check Login tests that the combination user / password is correct.

## Licence



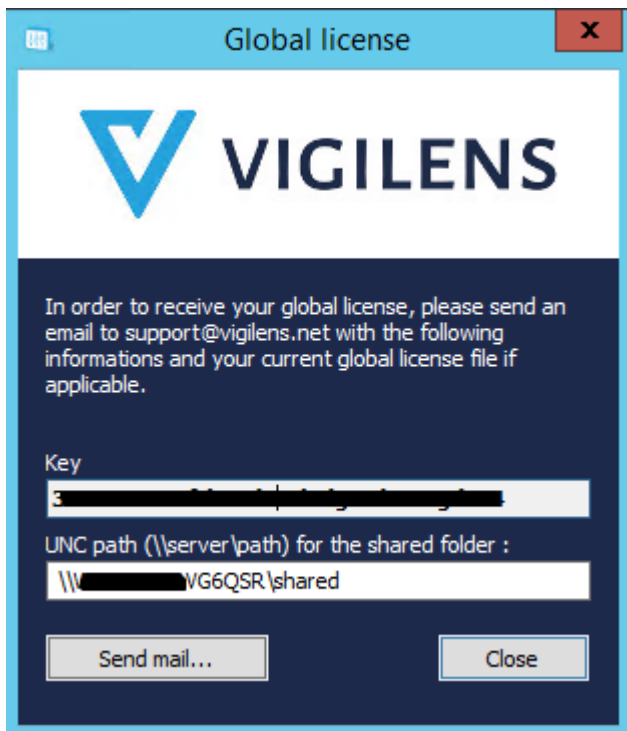
Manage and review your licence informations.

## Summary



Viewing the contents of the license files "LicenseGen.evs" and "LicenseGen.dat".

## Receive/update global license file



A dialog box specifying the key corresponding to your global license is displayed. Enter the UNC path corresponding to your shared directory and send this information to the following address **support@vigilens.net**.

You can use the button Send a mail... if a mail client is installed on the computer or if the information corresponding to the mail settings (see mail setup ). ).

Otherwise you can copy the key by copy/paste to avoid typing errors.

You will receive in return the files "LicenseGen.evs" and "LicenseGen.dat" that you will have to put in the shared directory.

Last update: 2020/07/10 16:29 en:v8\_0\_0:admintool:menus:accueil:start [https://vigilens.wiki/dokuwiki/doku.php?id=en:v8\\_0\\_0:admintool:menus:accueil:start&rev=1594391353](https://vigilens.wiki/dokuwiki/doku.php?id=en:v8_0_0:admintool:menus:accueil:start&rev=1594391353)

---

From: <https://vigilens.wiki/dokuwiki/> - **Vigilens Reporting Knowledge Garden**

Permanent link: [https://vigilens.wiki/dokuwiki/doku.php?id=en:v8\\_0\\_0:admintool:menus:accueil:start&rev=1594391353](https://vigilens.wiki/dokuwiki/doku.php?id=en:v8_0_0:admintool:menus:accueil:start&rev=1594391353)

Last update: **2020/07/10 16:29**

