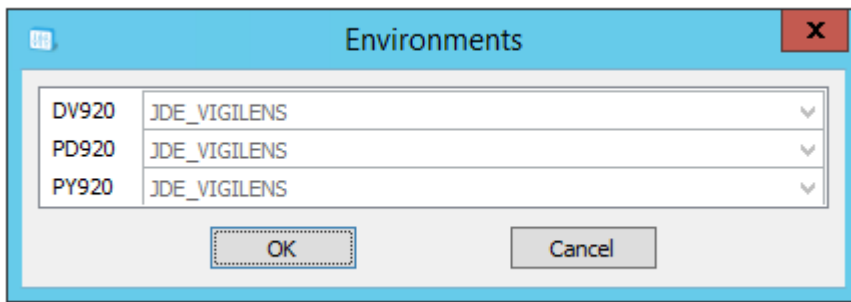


Home Menu > Environments / Databases



This screen lists all the parameterized environments and allows, for each of them, to specify the corresponding database. This parameterization is used for the dynamic management of query execution environments from JDE (JDEUTIL prerequisite).



For each environment, the configuration is only accessible if the environment is configured for several bases.

From: <https://vigilens.wiki/dokuwiki/> - **Vigilens Reporting Knowledge Garden**

Permanent link: https://vigilens.wiki/dokuwiki/doku.php?id=en:v8_0_0:admintool:menus:accueil:envtodb:start

Last update: **2021/02/01 15:54**

