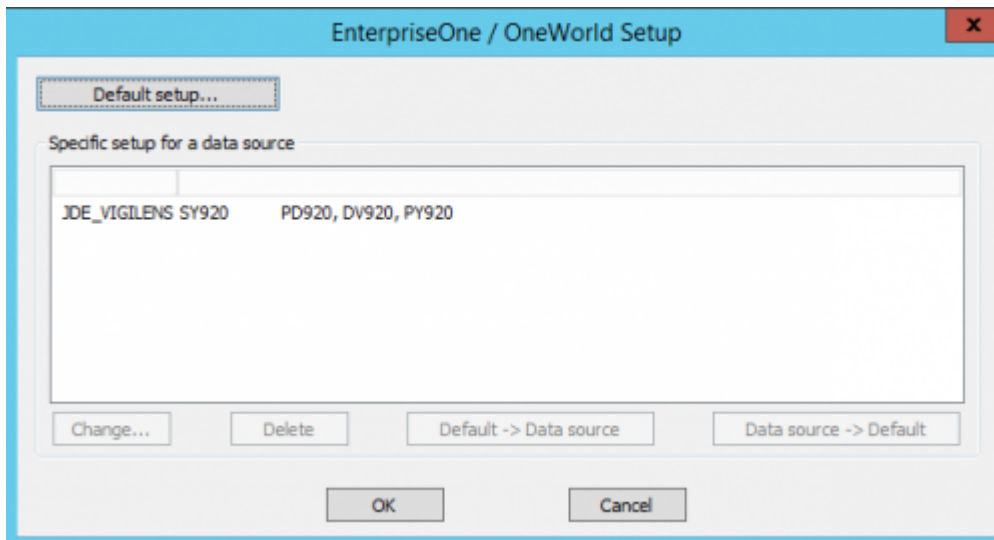


Home Menu > EnterpriseOne/OneWorld



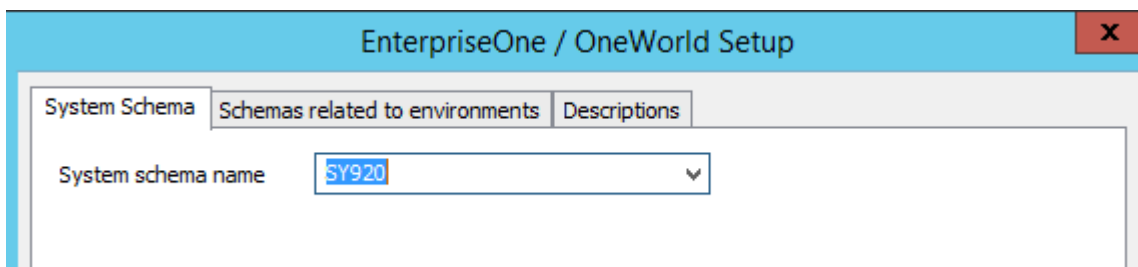
Mapping

As Vigilens is a tool particularly adapted for EnterpriseOne/OneWorld, it is necessary to configure it to query the JDE/World system tables.

For each data source, it is necessary to map the system schema as well as the environment schemas using the Change... button.

System schema

System schema is the schema in which table F0094 is located.

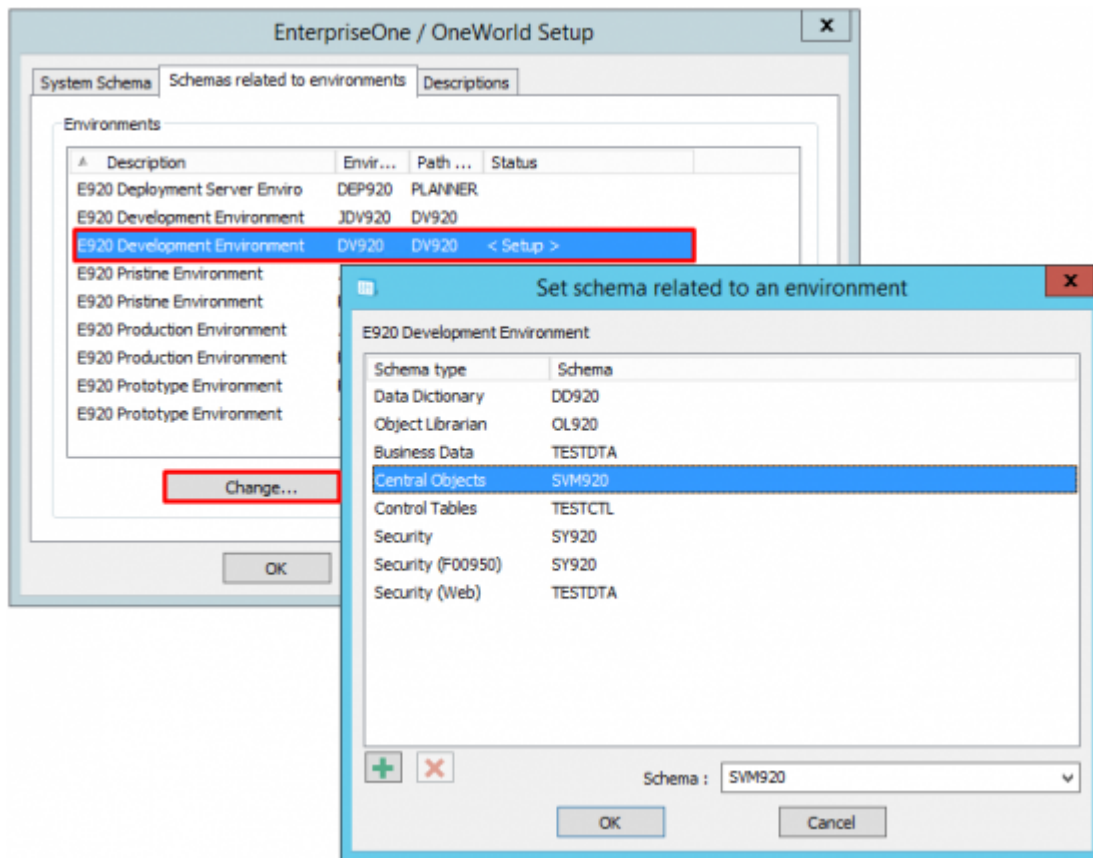


Schemas relating to environments

for each environment you want to use, click on the button Change... and fill in the schema for each type of schema requested.

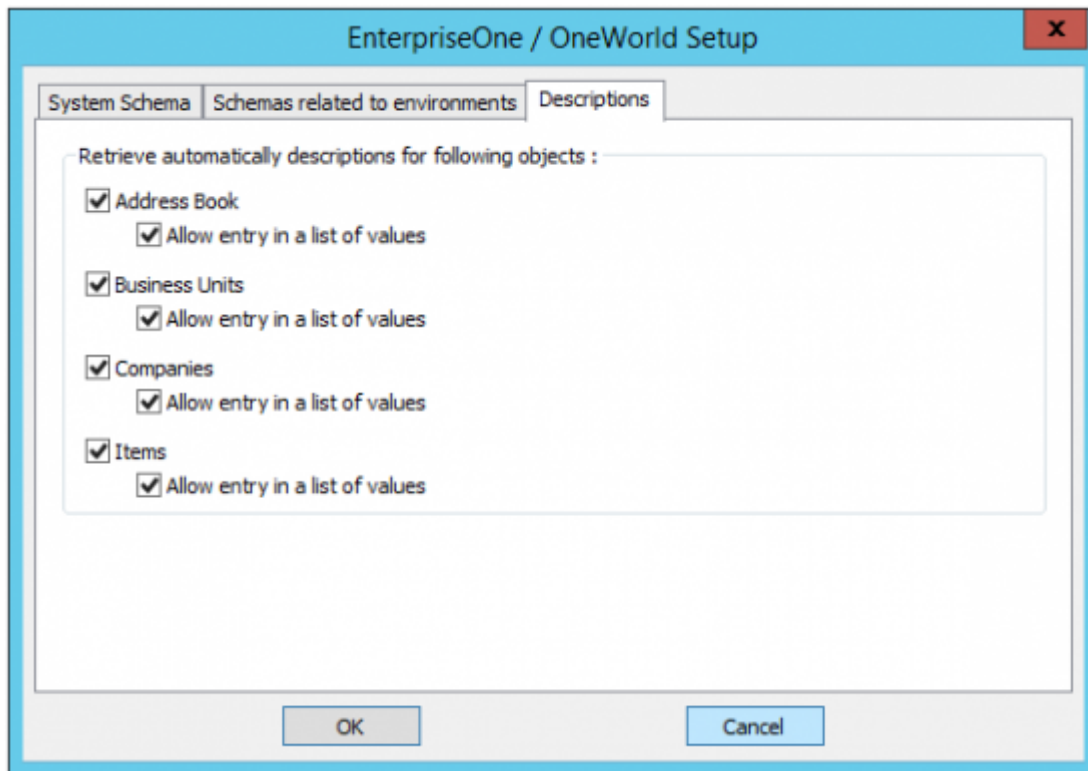


The list of environments is only displayed when the name of the system schema is correct.



You can specify another system schema for each table by using + button.

Descriptions



Vigilens can automatically retrieve descriptions associated with fields of following types :

- address book
- cost center
- society
- item

For each of these field types, it is possible to allow the automatic retrieval of the associated descriptions. If the automatic retrieval of descriptions is authorized, it is possible to authorize or not the entry in a list containing all the possible values as well as the associated descriptions (for example when entering a parameter at runtime).

Default values

- when a data source is selected in the grid, clicking on the button **Default** → **Data source** will make this source the mapping model.
- when a data source is selected in the grid, clicking on the button **Data Source** → **Default** will apply the mapping of the default source on the selected data source.
- the **Default** setting button allows you to see which data source is currently the default source.

From: <https://vigilens.wiki/dokuwiki/> - **Vigilens Reporting Knowledge Garden**

Permanent link: https://vigilens.wiki/dokuwiki/doku.php?id=en:v8_0_0:admintool:menus:accueil:enterpriseone:start&rev=1595402068

Last update: **2020/07/22 09:14**

