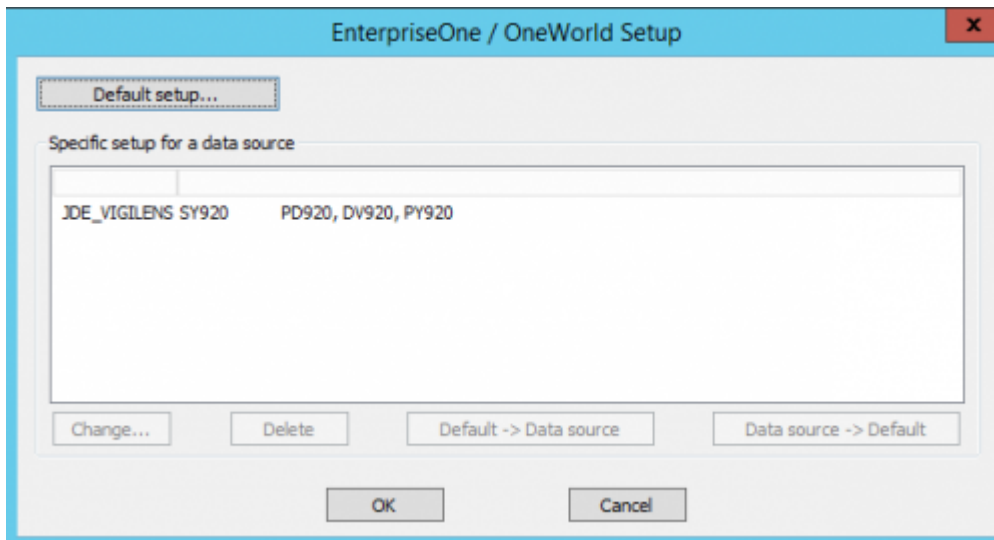


# Home Menu > EnterpriseOne/OneWorld

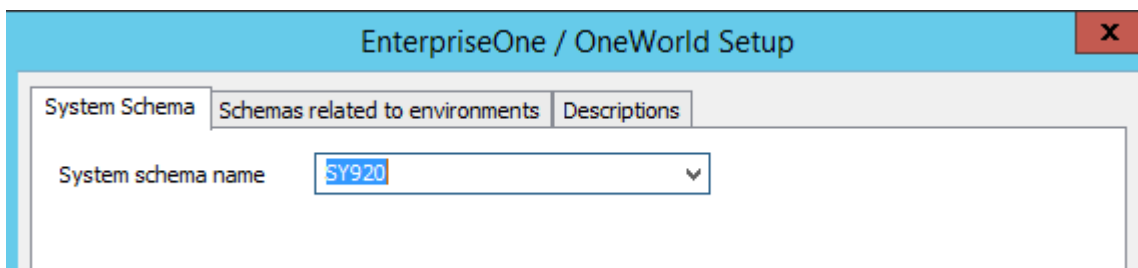


## Mapping

As Vigilens is a tool particularly adapted for EnterpriseOne/OneWorld, it is necessary to configure it to query the JDE/World system tables.

For each data source, it is necessary to map the system schema as well as the environment schemas using the Change... button.

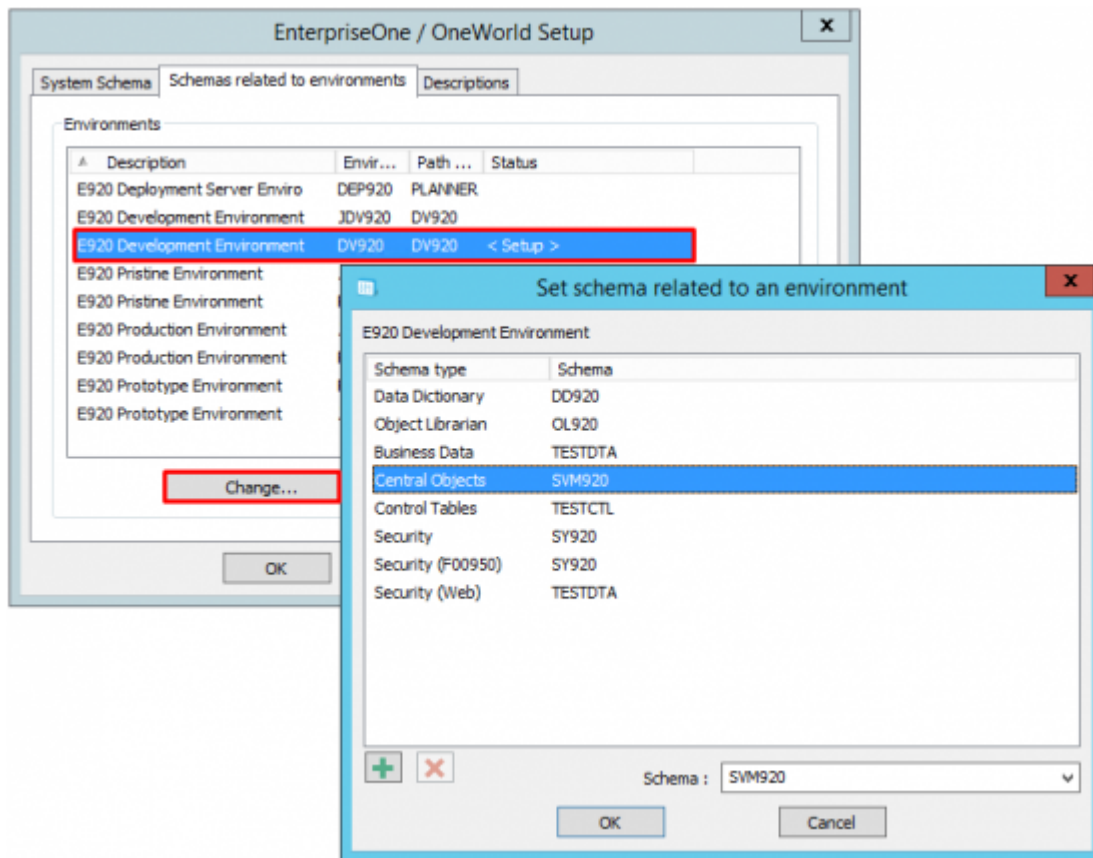
- system schema (schema in which table F0094 is located)



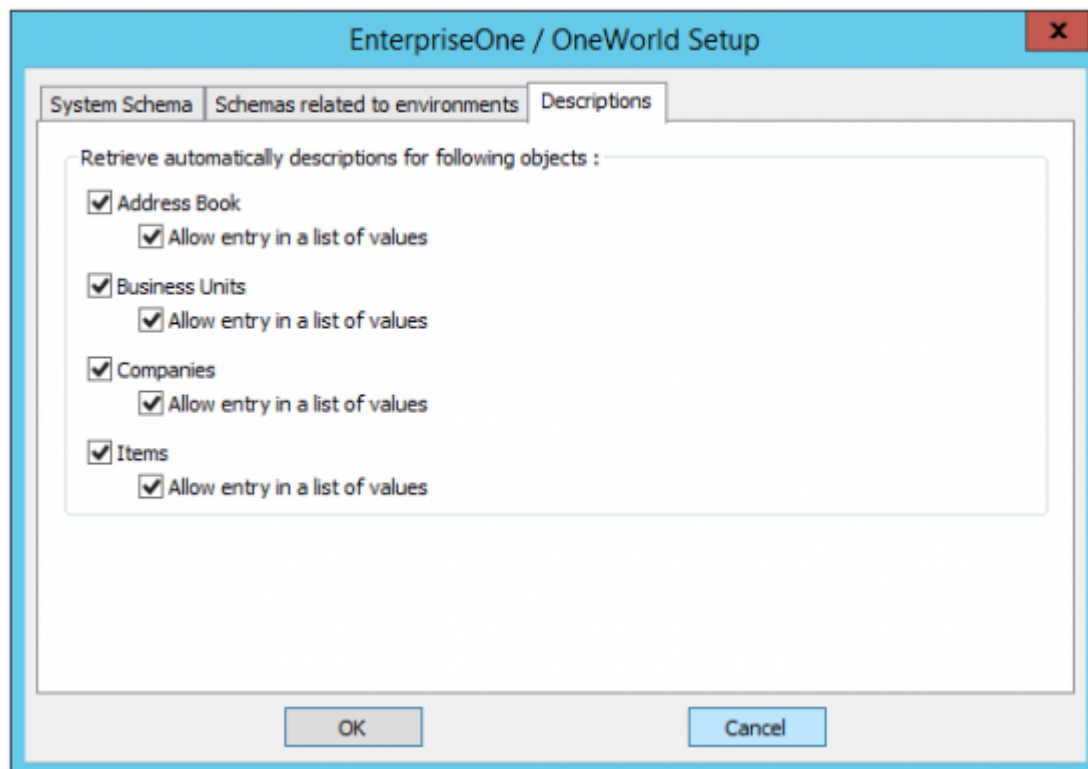
- Schemas relating to environments: for each environment you want to use, click on the button Change... and fill in the schema for each type of schema requested.



The list of environments is only displayed when the name of the system schema is correct.



In addition, for each data source, we can specify whether or not to automatically retrieve the descriptions of certain common fields:



## Default values

- when a data source is selected in the grid, clicking on the button **Default** → **Data source** will make this source the mapping model.
- when a data source is selected in the grid, clicking on the button **Data Source** → **Default** will apply the mapping of the default source on the selected data source.
- the **Default** setting button allows you to see which data source is currently the default source.

From:

<https://vigilens.wiki/dokuwiki/> - **Vigilens Reporting Knowledge Garden**

Permanent link:

[https://vigilens.wiki/dokuwiki/doku.php?id=en:v8\\_0\\_0:admintool:menus:accueil:enterpriseone:start&rev=1594802635](https://vigilens.wiki/dokuwiki/doku.php?id=en:v8_0_0:admintool:menus:accueil:enterpriseone:start&rev=1594802635)

Last update: **2020/07/15 10:43**

