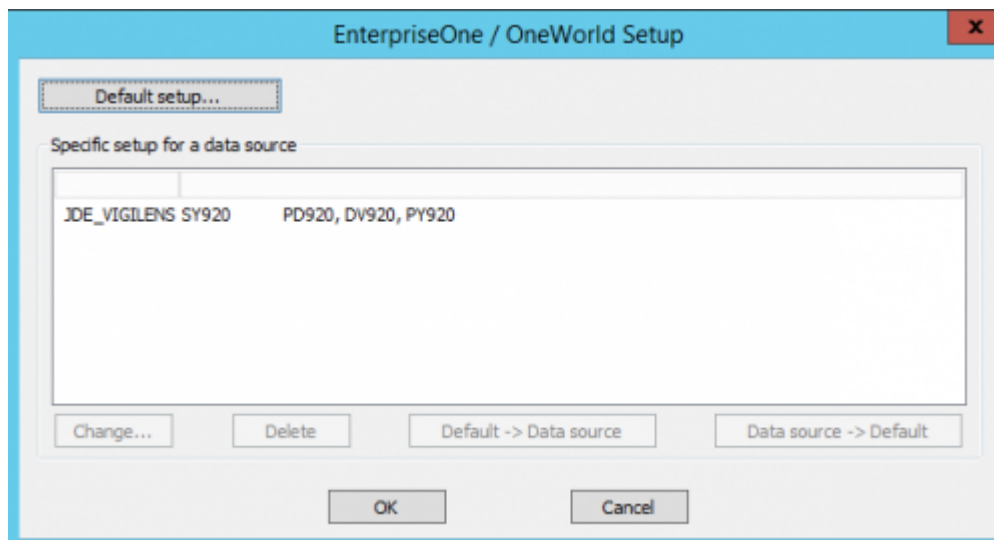


Home Menu > EnterpriseOne/OneWorld



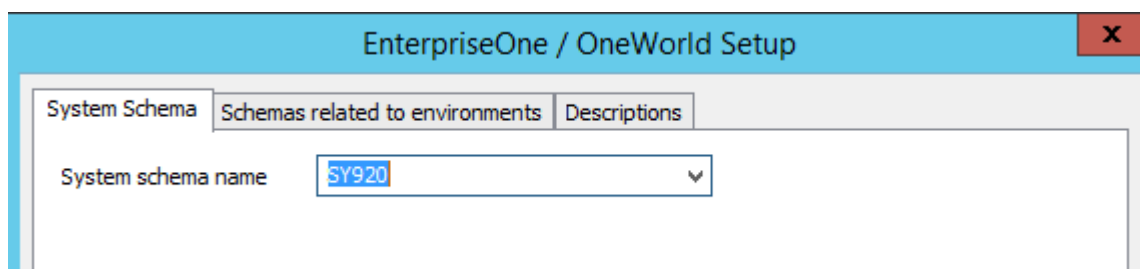
Mapping

As Vigilens is a tool particularly adapted for EnterpriseOne/OneWorld, it is necessary to configure it to query the JDE/World system tables.

For each data source, it is necessary to map the system schema as well as the environment schemas using the Change... button.

System schema

System schema is the schema in which table F0094 is located.

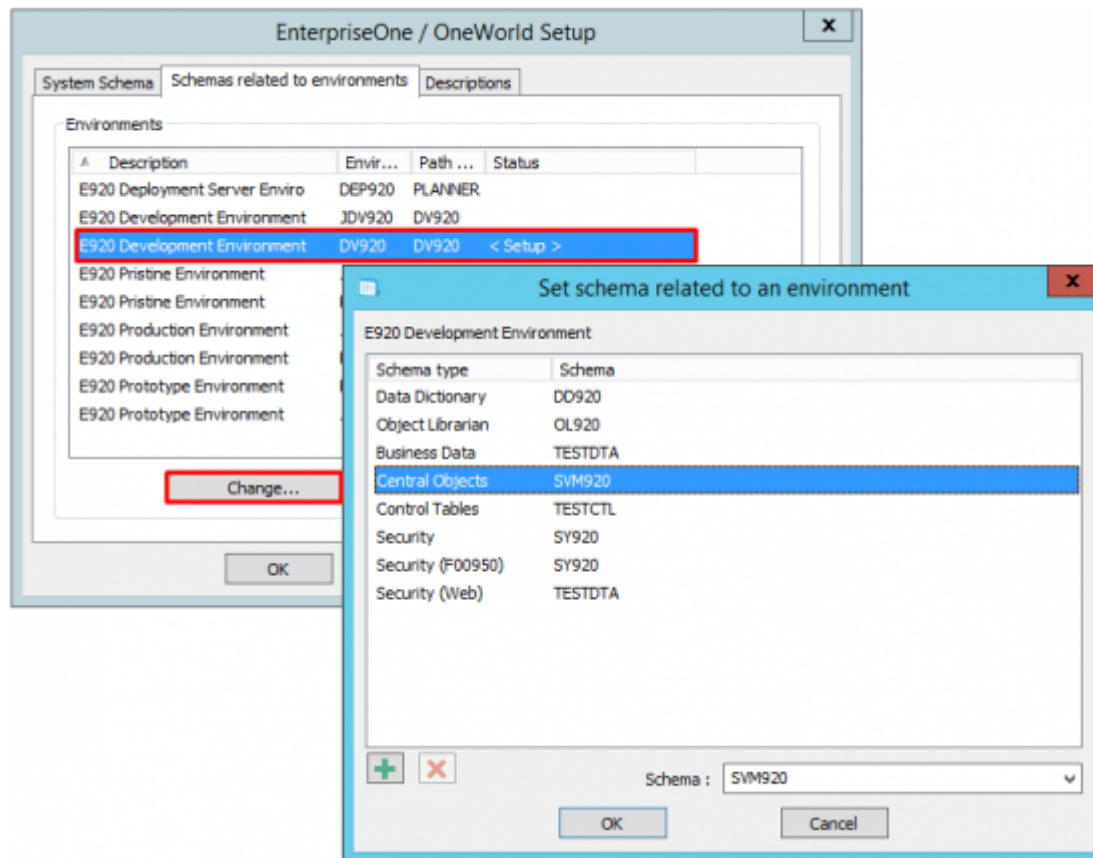


Schemas relating to environments

for each environment you want to use, click on the button Change... and fill in the schema for each type of schema requested.

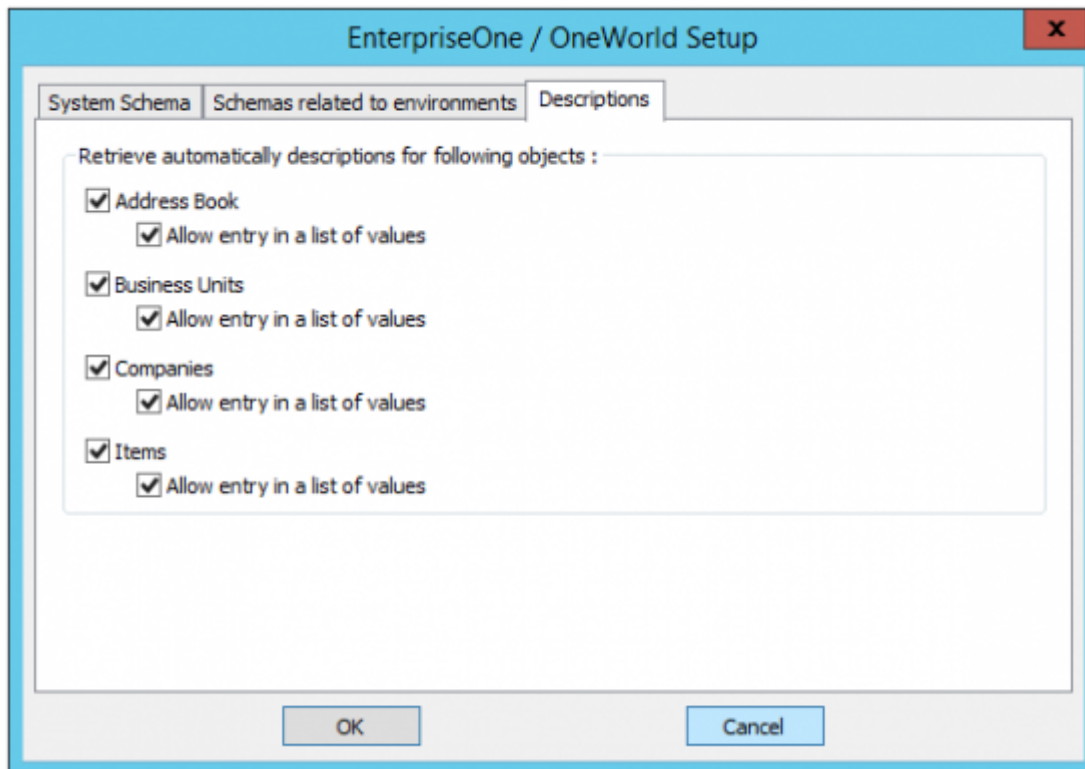


The list of environments is only displayed when the name of the system schema is correct.



You can specify another system schema for each table by using + button.

Descriptions



Vigilens can automatically retrieve descriptions associated with fields of following types :

- address book
- cost center
- society
- item

For each of these field types, it is possible to allow the automatic retrieval of the associated descriptions. If the automatic retrieval of descriptions is authorized, it is possible to authorize or not the entry in a list containing all the possible values as well as the associated descriptions (for example when entering a parameter at runtime).



In case there are a lot of descriptions, entering in a list is not recommended because filling the list can take a long time and, as it is done before the execution of the query, the user may have the impression that the application is frozen.

Remarks

- The Default setup button allows defining a default mapping that will be used by any JDE/World source that does not have a specific setup.



This button is present only for compatibility with previous versions. **We do not recommend using this type of setting.** It is preferable to have one setup per data source.

- If there are several data sources of type JDE/World, it is possible to copy the settings from one source to another by using the Copy and Paste buttons which then appear below the Edit..., Delete... buttons.

From:
<https://vigilens.wiki/dokuwiki/> - **Vigilens Reporting Knowledge Garden**

Permanent link:
https://vigilens.wiki/dokuwiki/doku.php?id=en:v8_0_0:admintool:menus:accueil:enterpriseone:start

Last update: **2020/07/22 09:35**

