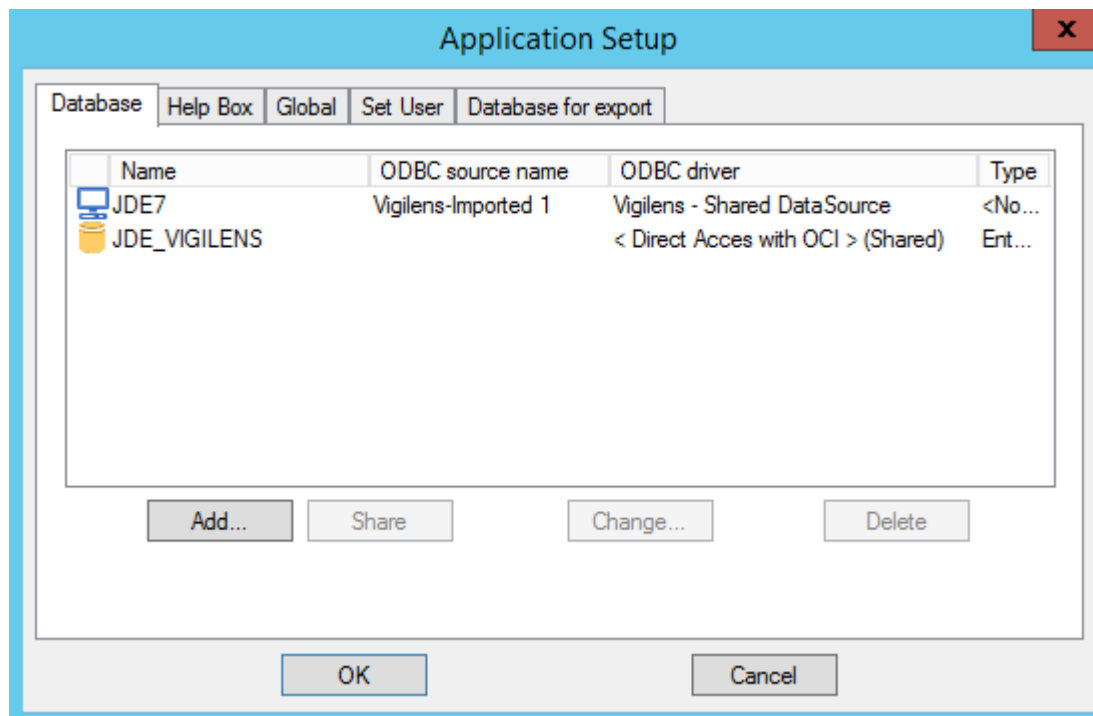


Setup menu > Application

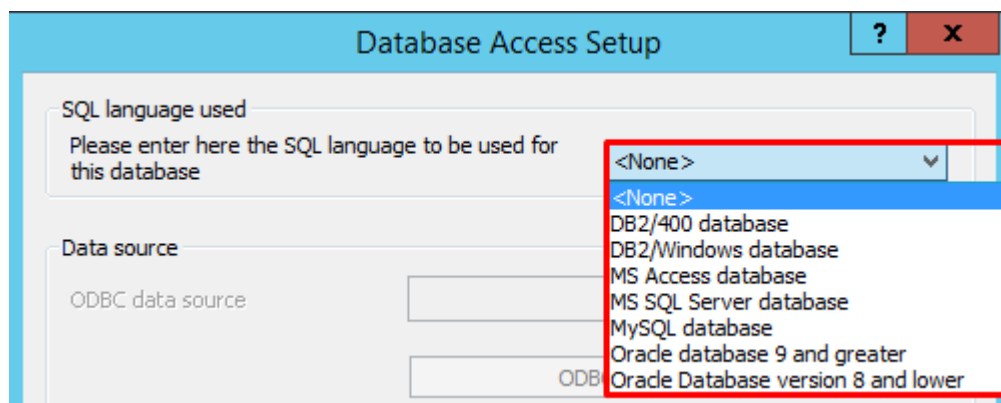
Databases



This settings tab lists all databases known to Vigilens.

Add a database

SQL Language used



Vigilens natively supports the SQL language for the following platforms:

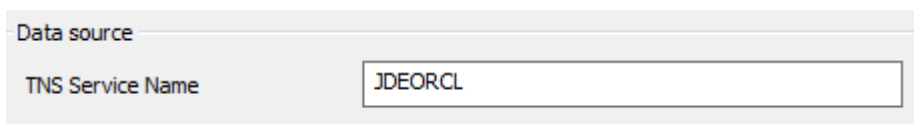
- Access
- DB2/400 except Union
- DB2/Windows except Union
- MySQL

- Oracle
- SQL Server

Data source

Oracle

For Oracle databases, connection is made through [OCI](#), only TNS service name has to be provided.



The screenshot shows a window titled "Data source" with a single input field labeled "TNS Service Name" containing the text "JDEORCL".

In some machine configurations, the OCILIB library does not initialize correctly because the Windows user environment variables do not allow to locate the oci.dll file (present in the Oracle installation directory).

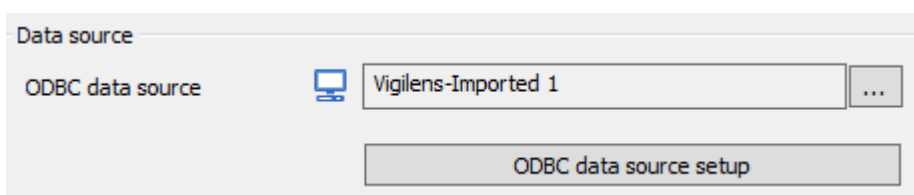


NB : this is often the case for the web server due to Windows account binded to web service.

It is then possible to define this path via a registry key:
HKEY_LOCAL_MACHINE\SOFTWARE\WOW6432Node\EVIDENS\Param\OracleLibPath
(HKEY_LOCAL_MACHINE\SOFTWARE\EVIDENS\Param\OracleLibPath for 32 bits machines)

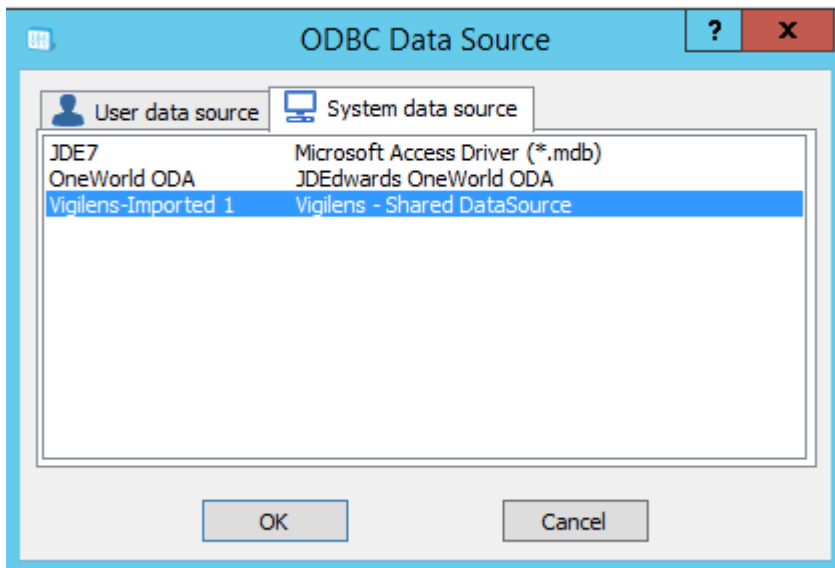
ODBC

Otherwise, the connection is made through ODBC.



The screenshot shows a window titled "Data source" with a dropdown menu labeled "ODBC data source" showing "Vigilens-Imported 1" and a button labeled "ODBC data source setup".

You must then choose (with the wizard) one of the ODBC connections defined either at the user level or at the system level. In most cases, we will use a system source.



In the case where the data source is not created in ODBC, you can access the windows ODBC setup by clicking ODBC data source setup button.

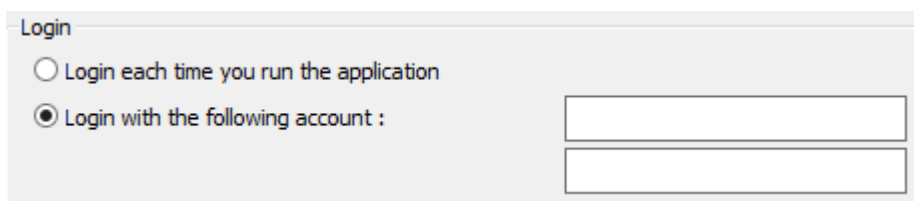


On 64-bit systems, it is advisable to use this button to access ODBC data source administration. This is because the application uses the 32-bit version of ODBC while the administration tools allow access to the 64-bit version.



In order to be able to add or modify an ODBC source from ODBC data source setup button, it may be necessary to start the AdminTool as administrator.

Connection



It is advisable to enter the login information so that the user does not have to enter it every time the data source is used.

Database type

Database type

Please enter here the database type in order to enable dedicated features, such as tables and fields description display

Please enter here the name you want to use in order to identify this database in the application

<None > ✓
<None >
EnterpriseOne / OneWorld
JDE World 7 and lower
JDE World 8 and greater

Allows you to specify the JDE version to ensure the correct reading of the data. In the case of a JDE type source, the choice of version ensures the correct operation of the functionalities specific to JDE type data sources.

Data source name

Please enter here the name you want to use in order to identify this database in the application

MyDB

Type here the description that will appear everywhere in Vigilens.

Advanced Setup

Global

Advanced setup [X]

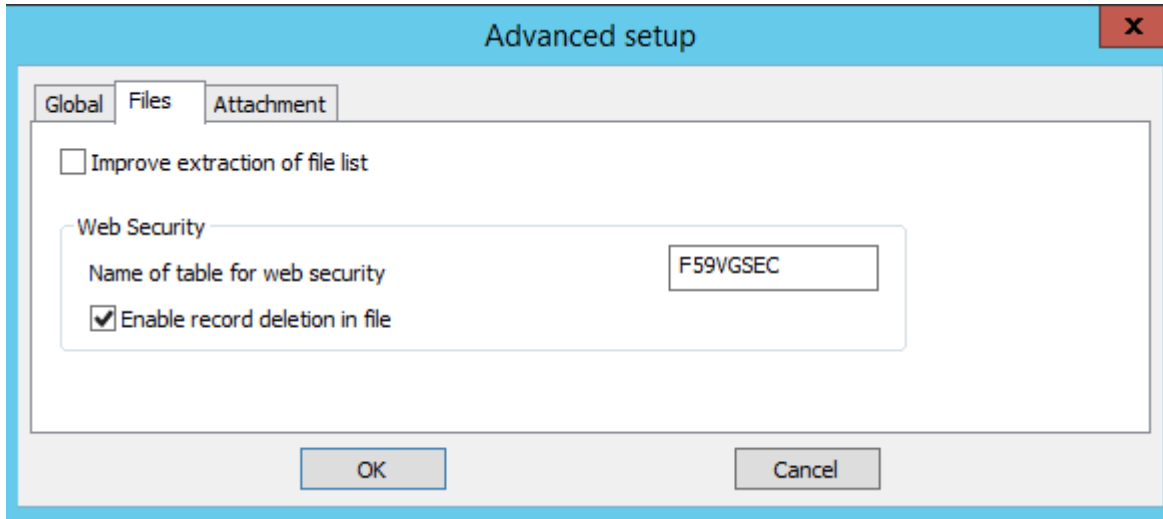
Global | Files | Attachment

Use of binary files

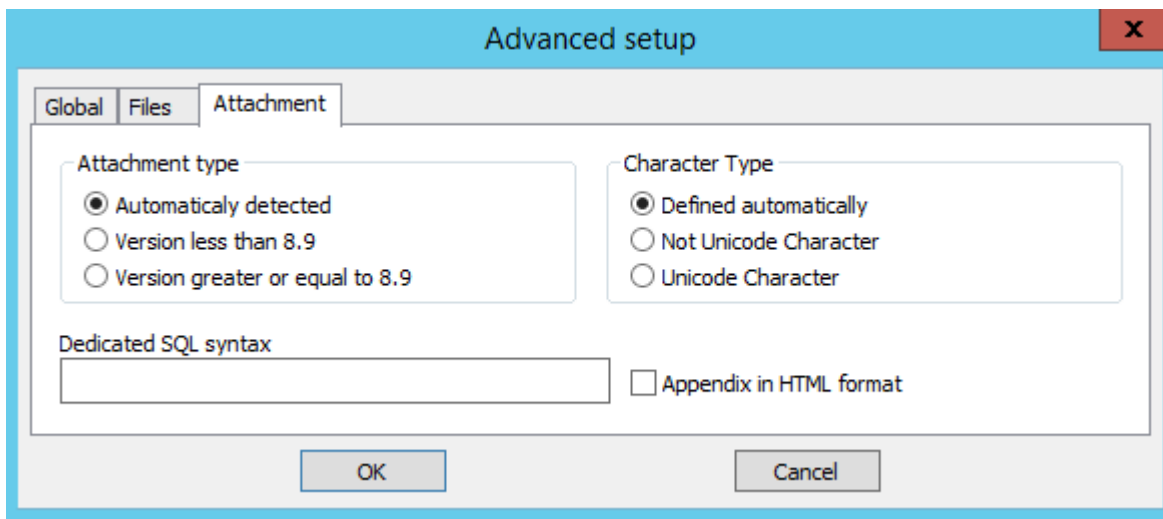
Allow UNION queries

OK Cancel

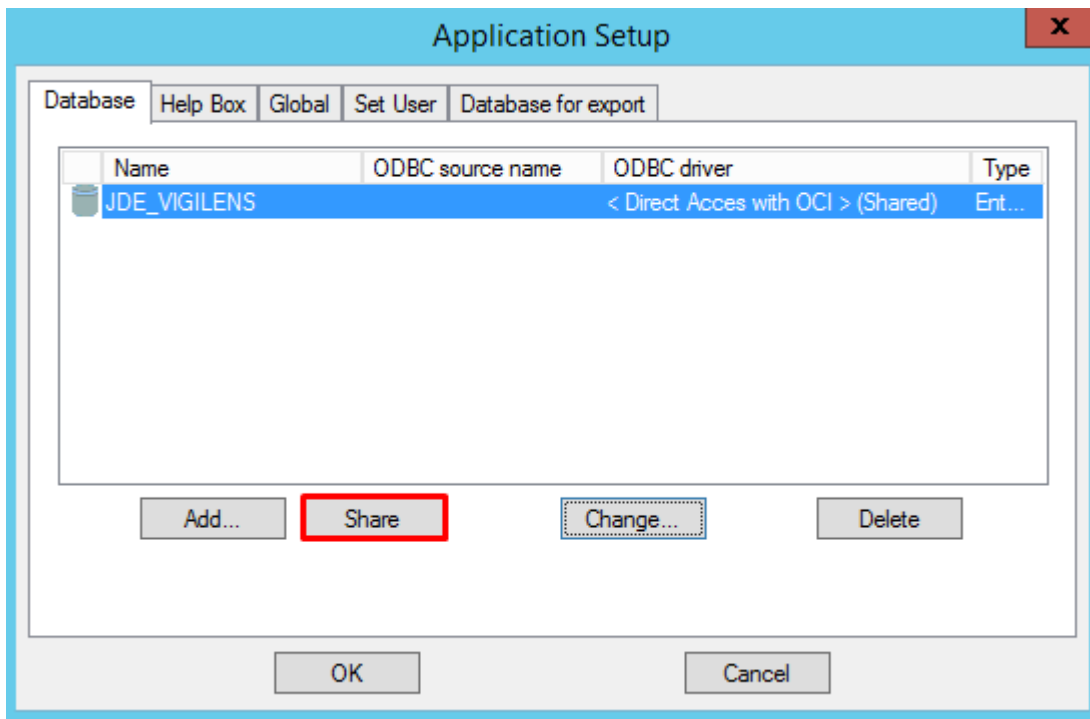
Files



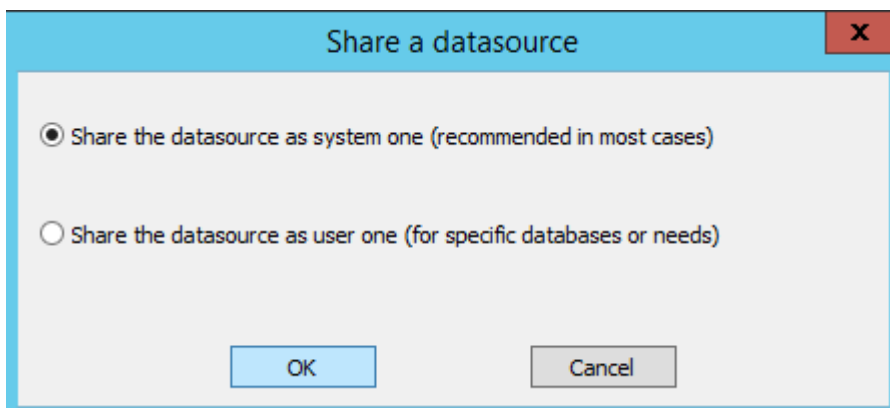
Attachement



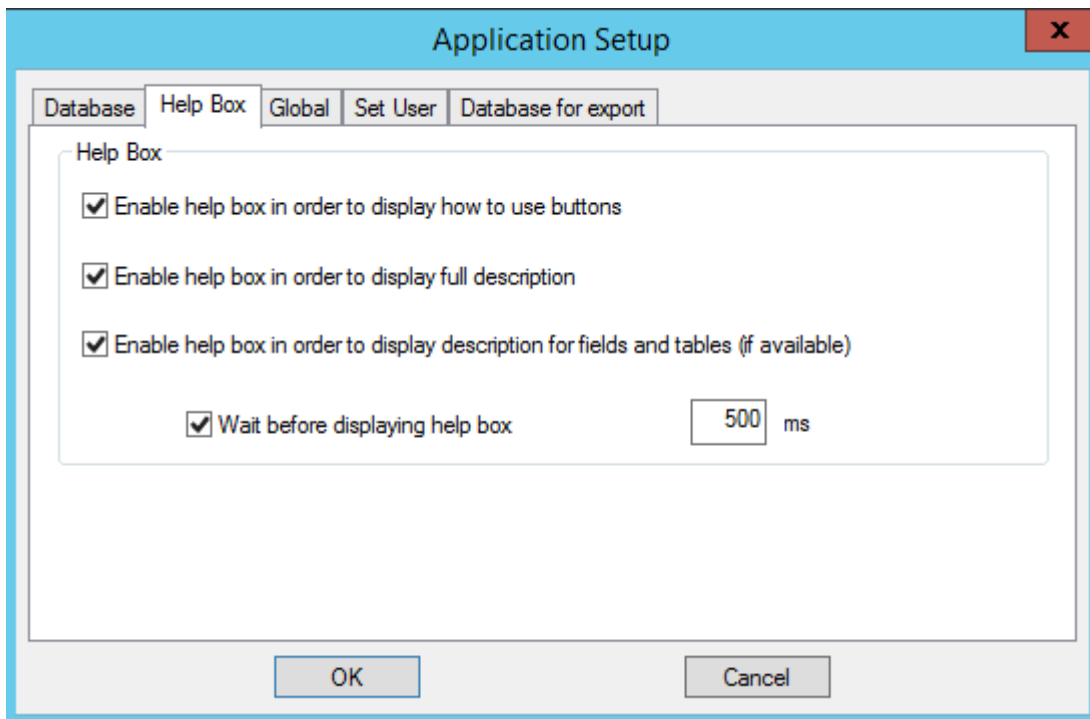
Share



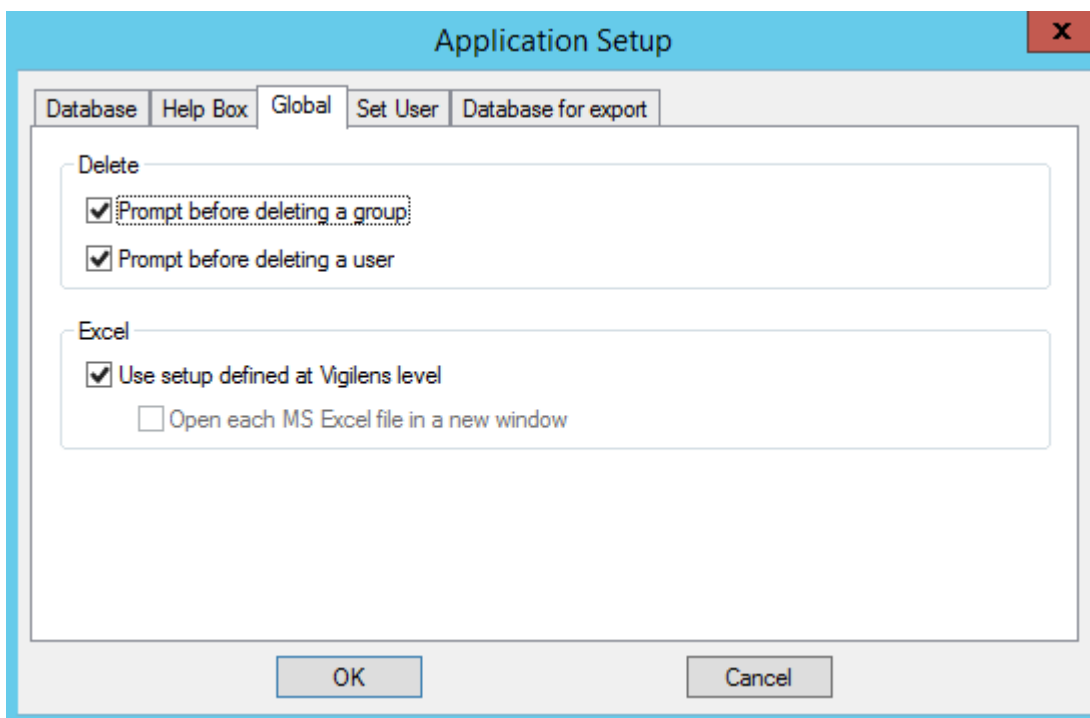
Once defined, a data source must be shared in order to be accessed by all Vigilens users.



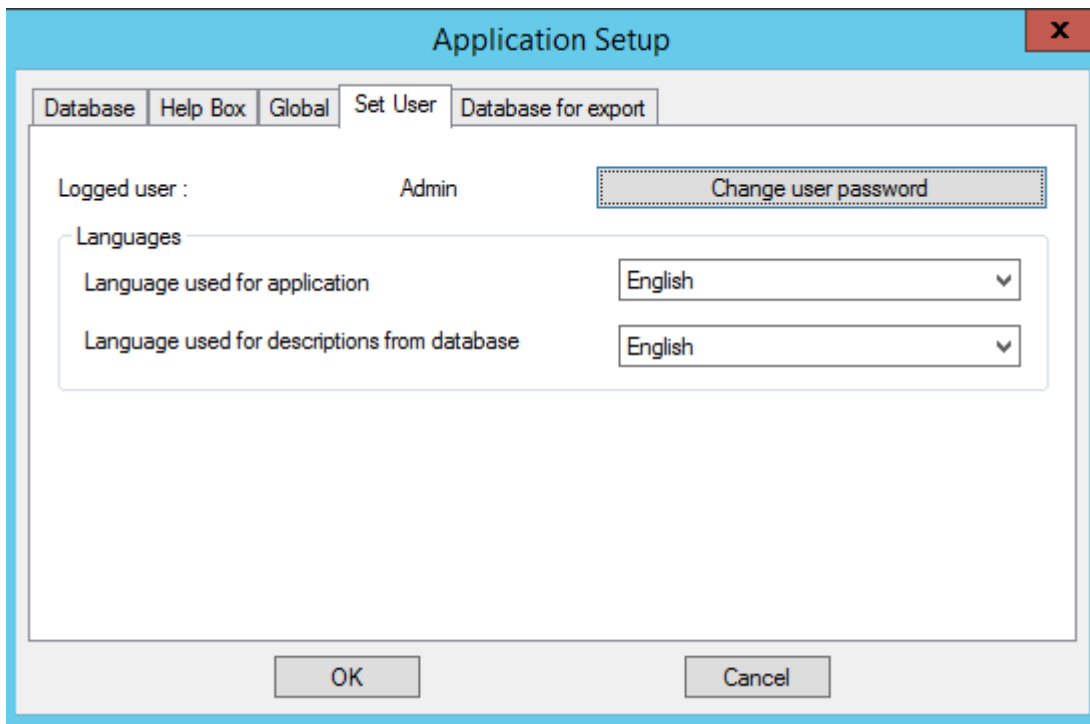
Help box



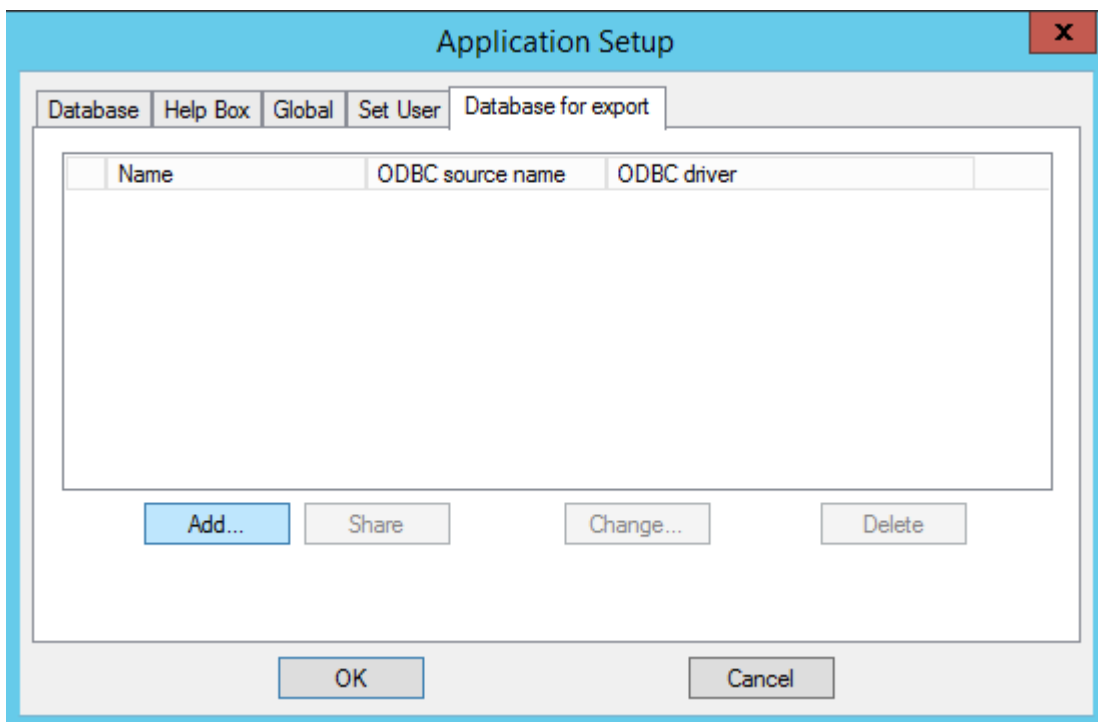
Global



Set user



Database for export



From: <https://vigilens.wiki/dokuwiki/> - **Vigilens Reporting Knowledge Garden**

Permanent link: https://vigilens.wiki/dokuwiki/doku.php?id=en:v8_0_0:admintool:menus:accueil:application:start&rev=1599123515

Last update: **2020/09/03 10:58**

