

Setup menu > Application

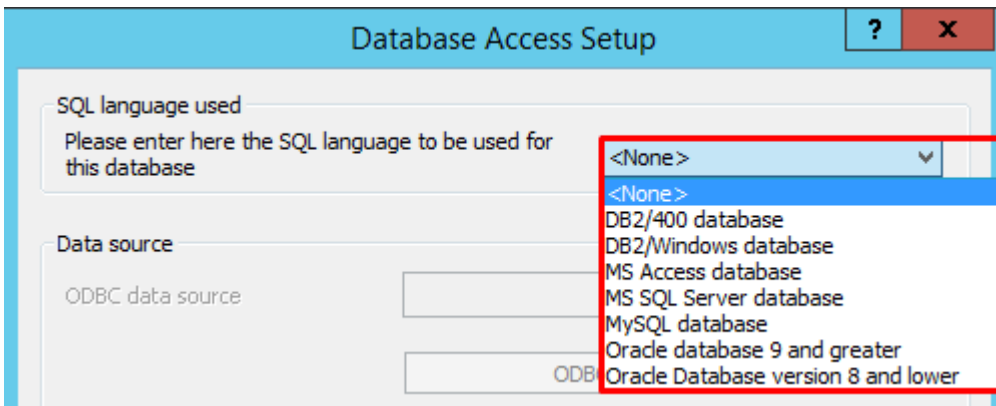
Databases



This settings tab lists all databases known to Vigilens.

Add a database

SQL Language used



Vigilens natively supports the SQL language for the following platforms:

- Access
- DB2/400 except Union
- DB2/Windows except Union
- MySQL
- Oracle
- SQL Server

Data source

Oracle

For Oracle databases, connection is made through [OCI](#), only TNS service name has to be provided.

Data source

TNS Service Name



In some machine configurations, the OCILIB library does not initialize correctly because

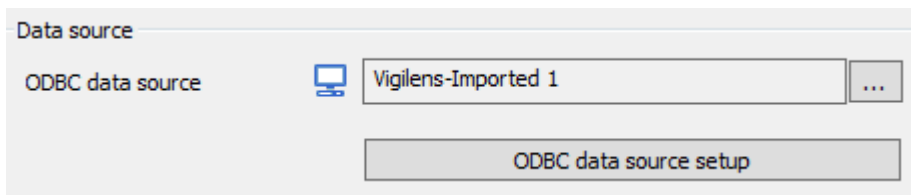
the Windows user environment variables do not allow to locate the oci.dll file (present in the Oracle installation directory).



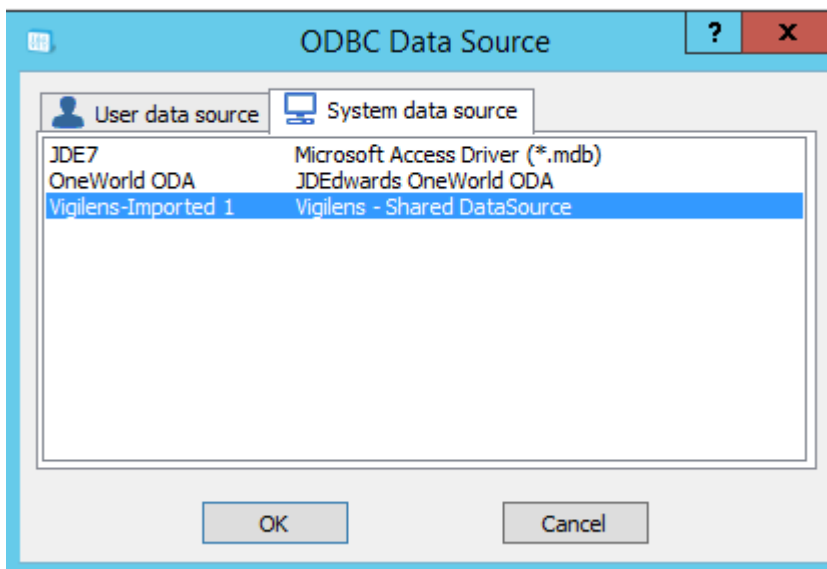
It is then possible to define this path via a registry key:
HKEY_LOCAL_MACHINE\SOFTWARE\EVIDENS\Param\OracleLibPath.

ODBC

Otherwise, the connection is made through ODBC.



You must then choose (with the wizard) one of the ODBC connections defined either at the user level or at the system level. In most cases, we will use a system source.



In the case where the data source is not created in ODBC, you can access the windows ODBC setup by clicking ODBC data source setup button.



On 64-bit systems, it is advisable to use this button to access ODBC data source administration. This is because the application uses the 32-bit version of ODBC while the administration tools allow access to the 64-bit version.

Connection

Login

Login each time you run the application

Login with the following account :

Database type

Database type

Please enter here the database type in order to enable dedicated features, such as tables and fields description display

Please enter here the name you want to use in order to identify this database in the application

<None> ▾

<None>

EnterpriseOne / OneWorld

JDE World 7 and lower

JDE World 8 and greater

Allows you to specify the JDE version to ensure the correct reading of the data.

Data source name

Please enter here the name you want to use in order to identify this database in the application

MyDB

Type here the description that will appear everywhere in Vigilens.

Advanced Setup

Global



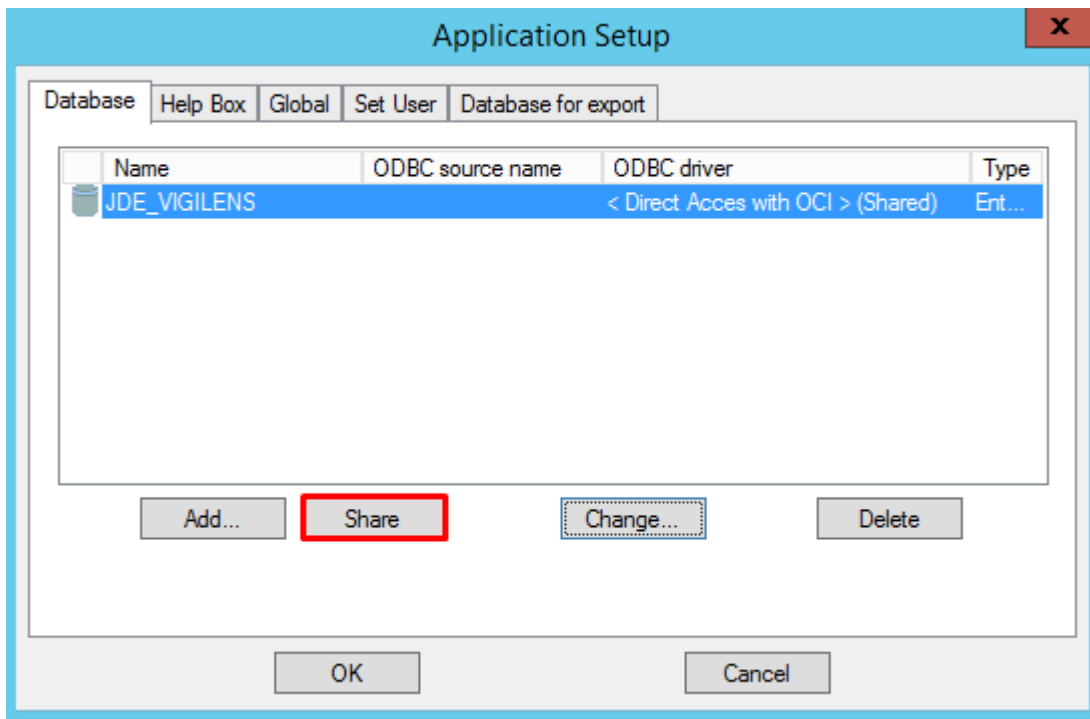
Files



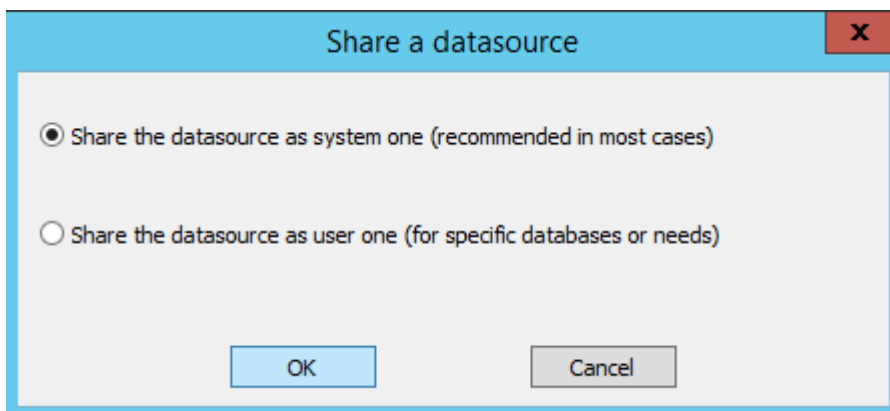
Attachement



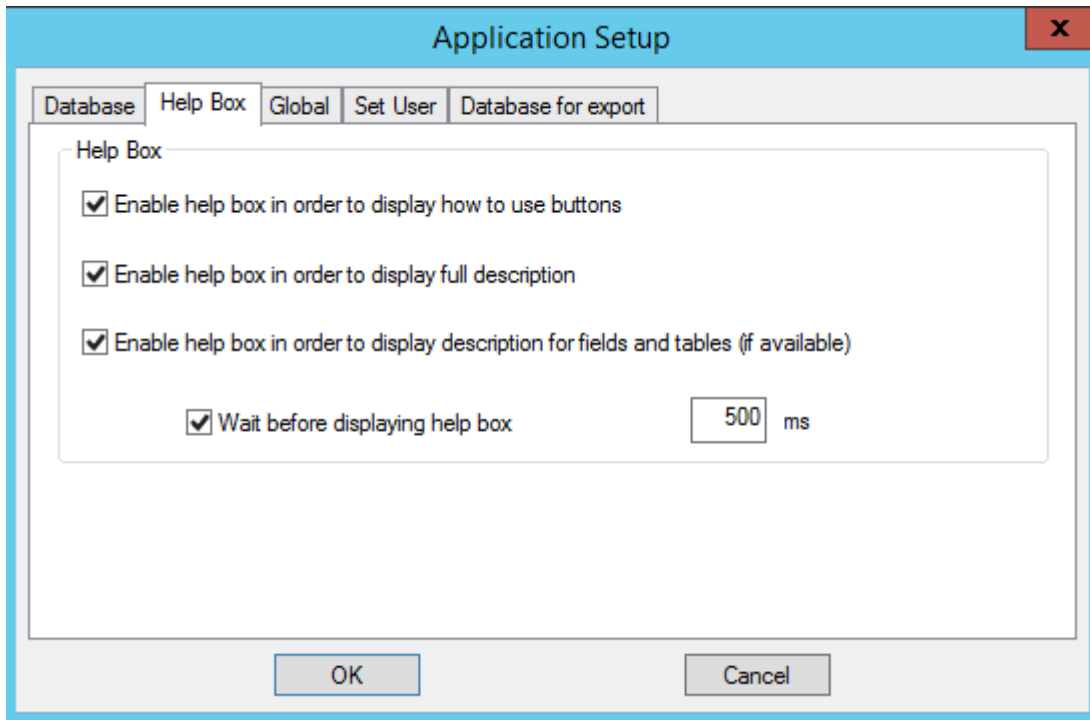
Share



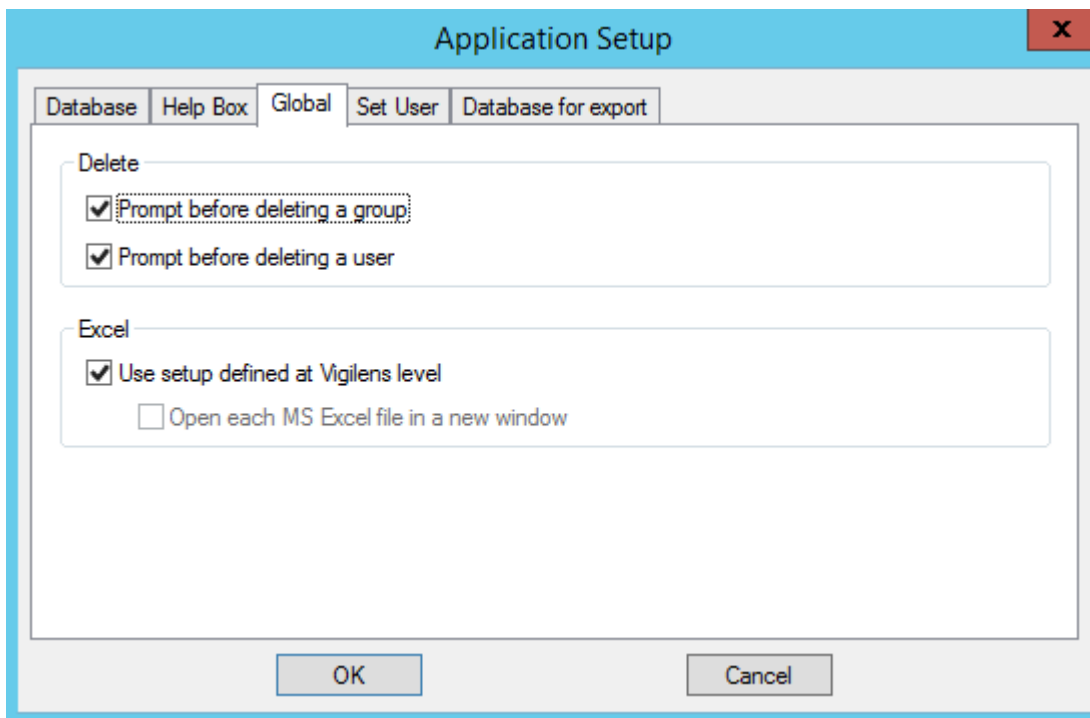
Once defined, a data source must be shared in order to be accessed by all Vigilens users.



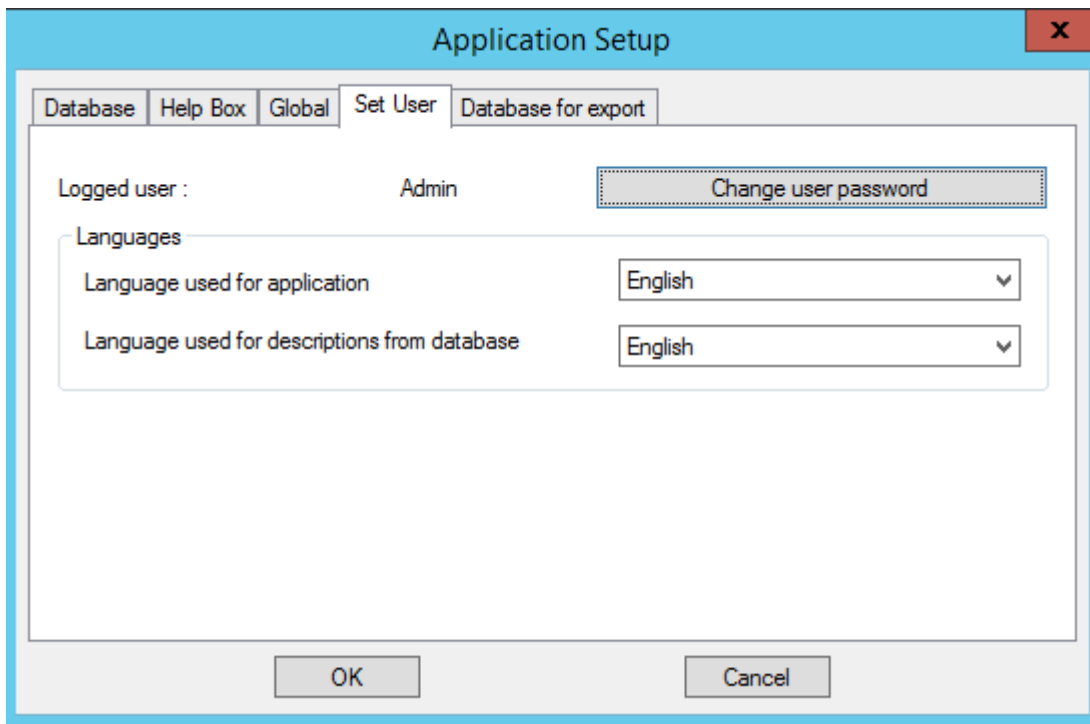
Help box



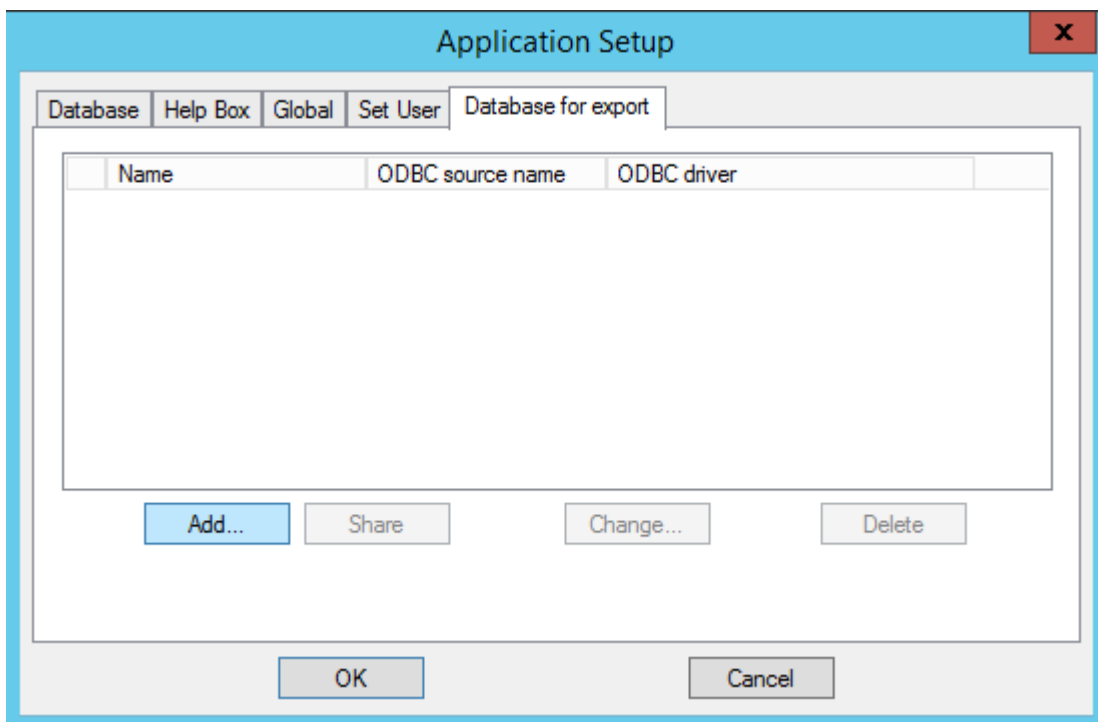
Global



Set user



Database for export



From: <https://vigilens.wiki/dokuwiki/> - **Vigilens Reporting Knowledge Garden**

Permanent link: https://vigilens.wiki/dokuwiki/doku.php?id=en:v8_0:admintool:menus:accueil:application:start&rev=1595837155

Last update: **2020/07/27 10:05**

